

Model

Designation **CU DLE6.5CN R290 230/1/50 CAP**

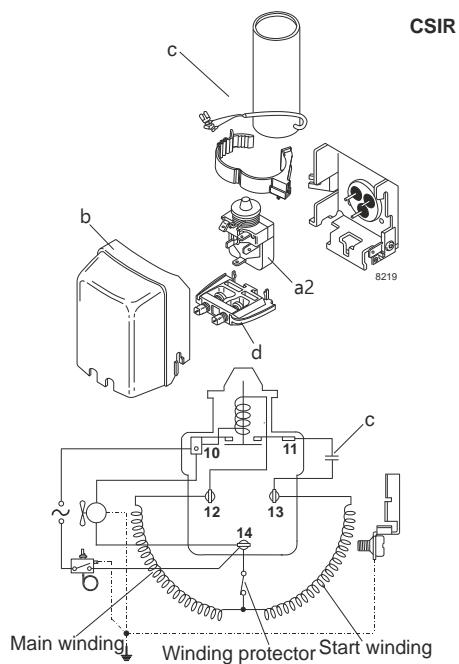
Sales code: 314H2001
Engineering code: CUDLE65CN0CE

Components Condensing-Unit / Spare Parts

Component	Type	Spare part code number
Compressor code	DLE6.5CN	102H4765
Condenser	Condenser (2 rows x 10 tubes)	SP 314S0008
Fan motor	14W	MP 314S0016
Blade code	ø230mm 28°	SP 314S0025
Air flow	510,4m³/h	
Receiver code	not installed	-/-
Suction valve code	OD ø8mm / 1/3in	-/-
Liquid valve code	OD ø6mm / 1/4in	-/-

Compressor starting equipment	Spare part code number
pos. a2 - current relay	117U7016
pos. c - start capacitor (80µF)	117U5015
pos. b - plastic cover	103N0491
pos. d - cord relief	103N1010

Wiring Sketch Compressor



Model

Designation **CU DLE6.5CN R290 230/1/50 CAP**

Sales code: 314H2001

Engineering code: CUDLE65CN0CE

Cooling performance - Conf. 1

Power supply 220-240V / 50Hz 1~ Voltage range 198 - 254V / 50Hz

Refr. charge - tech. limit 150g / 5,3oz

Starter HST / capillary tube or expansion valve

Motor configuration CSIR

Refrigerant R290

Application LBP+MBP

Approvals Eco design (EU) 2015/1095, CE, UK CA, VDE

ambient temperature	[°C / °F]	25 / 77							(suction gas temperature [°C / °F]: 20 / 68, subcooling: 2K)
evaporating temperature	[°C / °F]	-35 / -31	-30 / -22	-25 / -13	-20 / -4	-10 / 14	0 / 32	10 / 50	
cooling capacity	[W]	202	248	301	363	511	689	887	
COP	[W/W]	1,3	1,45	1,6	1,75	2,04	2,29	2,44	
cooling capacity	[Btu/h]	691	847	1029	1239	1744	2352	3028	
power consumption	[W]	155	171	188	207	250	301	364	
current consumption	[A]	1,1	1,2	1,2	1,3	1,5	1,7	1,9	

ambient temperature	[°C / °F]	32 / 90							(suction gas temperature [°C / °F]: 20 / 68, subcooling: 2K)
evaporating temperature	[°C / °F]	-35 / -31	-30 / -22	-25 / -13	-20 / -4	-10 / 14	0 / 32	10 / 50	
cooling capacity	[W]	176	222	275	333	469	627	798	
COP	[W/W]	1,09	1,24	1,39	1,51	1,75	1,92	2,03	
cooling capacity	[Btu/h]	602	760	938	1137	1601	2140	2725	
power consumption	[W]	161	179	198	220	268	326	394	
current consumption	[A]	1,2	1,2	1,3	1,3	1,5	1,8	2,1	

ambient temperature	[°C / °F]	38 / 100							(suction gas temperature [°C / °F]: 20 / 68, subcooling: 2K)
evaporating temperature	[°C / °F]	-35 / -31	-30 / -22	-25 / -13	-20 / -4	-10 / 14	0 / 32	10 / 50	
cooling capacity	[W]	161	206	256	310	431	569	715	
COP	[W/W]	0,98	1,11	1,24	1,35	1,52	1,64	1,71	
cooling capacity	[Btu/h]	551	705	874	1058	1473	1942	2443	
power consumption	[W]	165	185	206	230	284	346	419	
current consumption	[A]	1,2	1,2	1,3	1,4	1,6	1,8	2,2	

ambient temperature	[°C / °F]	43 / 109							(suction gas temperature [°C / °F]: 20 / 68, subcooling: 2K)
evaporating temperature	[°C / °F]	-35 / -31	-30 / -22	-25 / -13	-20 / -4	-10 / 14	0 / 32		
cooling capacity	[W]	149	192	238	288	395	515		
COP	[W/W]	0,89	1,02	1,13	1,22	1,34	1,43		
cooling capacity	[Btu/h]	509	657	814	982	1351	1759		
power consumption	[W]	167	188	211	237	294	360		
current consumption	[A]	1,2	1,2	1,3	1,4	1,6	1,9		