

Model

Designation **CU KLF6.6CND R290 230/1/50 CAP**



Sales code: 314H6003
Engineering code: CUKLF66CND0CE

Application Data

Power supply 220-240V / 50Hz 1~
Refrigerants R290
Refr. charge - tech. limit 200g / 7,1oz
Starter HST / capillary tube or expansion valve
Sound pressure (10m)

Generic data

Voltage range 198 - 254V / 50Hz
Refrigerant R290
Application LBP+MBP

Rated performance pe=-10°C, Tsuc=20°C, Tamb=25°C, subcooling: 0K
Cooling capacity 534W / 1824Btu/h
Power consumption 278,9W
Current consumption 1,8A
COP/EER 1,92 / 6,54Btu/Wh

Approvals Eco design (EU) 2015/1095,
CE, UK CA, VDE

Compressor

Designation **KLF6.6CND**
Motor configuration CSIR
Locked rotor amperage 12,3A
Rated load amperage 2,1A
Winding resistance main 8,4Ω
Winding resistance aux 11,9Ω
Oil quantity 152cm³ / 5,1fl.oz
Oil type POE
Horsepower rating 3/10 HP

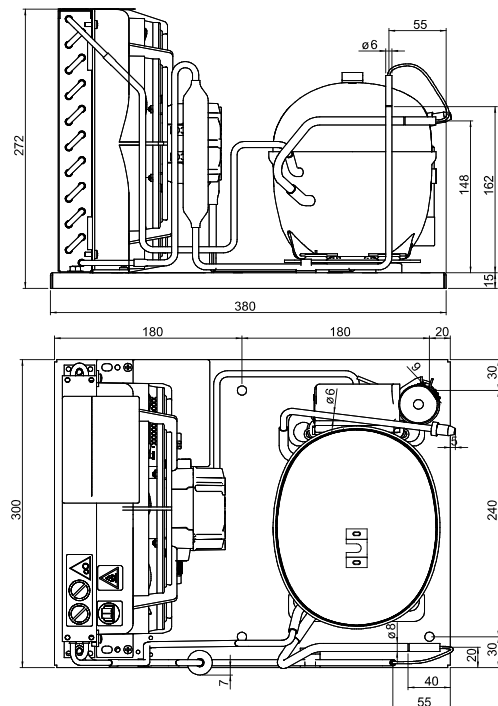
Dimensions

Condensing unit

Height x Width x Depth 272 x 300 x 380 [mm] / 10,7 x 11,8 x 15 [in]
Weight 14,5kg / 32lbs
Suction adapter OD ø8mm / 1/3in
Discharge adapter OD ø6mm / 1/4in
Process connector ø6,2mm / 0,24in

Package data

Height x Width x Depth 300 x 340 x 494 [mm] / 11,8 x 13,4 x 19,4 [in]
Weight 17,5kg / 38,6lbs



Model

Designation **CU KLF6.6CND R290 230/1/50 CAP**

Sales code: 314H6003

Engineering code: CUKLF66CND0CE

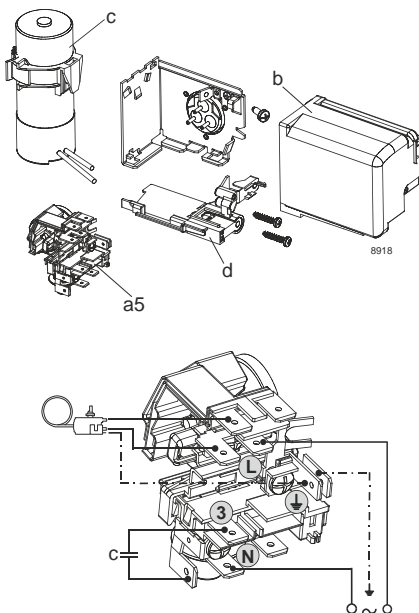
Components Condensing-Unit / Spare Parts

Component	Type	Spare part code number
Compressor code	KLF6.6CND	106H2700
Condenser	Condenser (2 rows x 10 tubes)	SP 314S0008
Fan motor	30W	MP 314S0016
Blade code	ø230mm 28°	SP 314S0025
Air flow	510,4m³/h	
Receiver code	not installed	-/-
Suction valve code	OD ø8mm / 1/3in	-/-
Liquid valve code	OD ø6mm / 1/4in	-/-

Compressor starting equipment	Spare part code number
pos. a5 - current relay TY (T0337/L6-S1)	117U7071
pos. c - start capacitor (80µF, 6.3mm)	117U5001
pos. b, d - cover + clamp + screws	103N0600

Wiring Sketch Compressor

CSIR



Model

Designation	CU KLF6.6CND R290 230/1/50 CAP	Sales code:	314H6003
		Engineering code:	CUKLF66CND0CE

Cooling performance - Conf. 1

Power supply	220-240V / 50Hz 1~	Voltage range	198 - 254V / 50Hz
Refr. charge - tech. limit	200g / 7,1oz		
Starter	HST / capillary tube or expansion valve		
Motor configuration	CSIR		
Refrigerant	R290		
Application	LBP+MBP		
Approvals	Eco design (EU) 2015/1095, CE, UK CA, VDE		

ambient temperature	[°C / °F]	25 / 77 (suction gas temperature [°C / °F]: 20 / 68, subcooling: 0K)						
evaporating temperature	[°C / °F]	-30 / -22	-25 / -13	-20 / -4	-10 / 14	0 / 32	5 / 41	10 / 50
cooling capacity	[W]	260	314	379	534	715	811	909
COP	[W/W]	1,29	1,44	1,6	1,91	2,19	2,31	2,42
cooling capacity	[Btu/h]	887	1073	1294	1824	2443	2771	3104
power consumption	[W]	201	218	237	279	326	351	376
current consumption	[A]	1,6	1,6	1,7	1,8	2	2,1	2,2

ambient temperature	[°C / °F]	32 / 90 (suction gas temperature [°C / °F]: 20 / 68, subcooling: 0K)						
evaporating temperature	[°C / °F]	-30 / -22	-25 / -13	-20 / -4	-10 / 14	0 / 32	5 / 41	10 / 50
cooling capacity	[W]	235	287	348	490	653	738	824
COP	[W/W]	1,13	1,26	1,4	1,66	1,88	1,97	2,05
cooling capacity	[Btu/h]	804	982	1188	1674	2229	2521	2815
power consumption	[W]	208	227	248	295	347	374	402
current consumption	[A]	1,6	1,6	1,7	1,8	2	2,2	2,3

ambient temperature	[°C / °F]	38 / 100 (suction gas temperature [°C / °F]: 20 / 68, subcooling: 0K)				
evaporating temperature	[°C / °F]	-30 / -22	-25 / -13	-20 / -4	-10 / 14	0 / 32
cooling capacity	[W]	214	264	321	451	598
COP	[W/W]	1,01	1,13	1,25	1,46	1,64
cooling capacity	[Btu/h]	731	901	1095	1542	2042
power consumption	[W]	212	233	257	308	365
current consumption	[A]	1,6	1,7	1,7	1,9	2,1

ambient temperature	[°C / °F]	43 / 109 (suction gas temperature [°C / °F]: 20 / 68, subcooling: 0K)			
evaporating temperature	[°C / °F]	-30 / -22	-25 / -13	-20 / -4	-10 / 14
cooling capacity	[W]	194	242	296	417
COP	[W/W]	0,91	1,02	1,13	1,31
cooling capacity	[Btu/h]	663	828	1011	1426
power consumption	[W]	213	237	262	318
current consumption	[A]	1,6	1,7	1,7	1,9