

Model

Designation **CU KLF6.6CND R290 230/1/50 VAL**



Sales code: 314H6005

Engineering code: CUKLF66CND0VE

Application Data

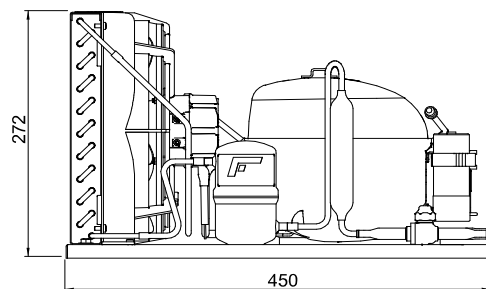
Power supply	220-240V / 50Hz 1~
Refrigerants	R290
Refr. charge - tech. limit	200g / 7,1oz
Starter	HST / capillary tube or expansion valve
Sound pressure (10m)	0dB(A)

Generic data

Voltage range	198 - 254V / 50Hz
Refrigerant	R290
Application	LBP+MBP
Rated performance	<u>pe=-10°C, Tsuc=20°C, Tamb=25°C, subccoling: 0K</u>
Cooling capacity	527W / 1800Btu/h
Power consumption	286,4W
Current consumption	1,8A
COP/EER	1,84 / 6,28Btu/Wh
Approvals	Eco design (EU) 2015/1095, CE, UK CA, VDE

Compressor

Designation	KLF6.6CND
Motor configuration	CSIR
Locked rotor amperage	12,3A
Rated load amperage	2,1A
Winding resistance main	8,4Ω
Winding resistance aux	11,9Ω
Oil quantity	170cm ³ / 5,7fl.oz
Oil type	POE
Horsepower rating	3/10 HP



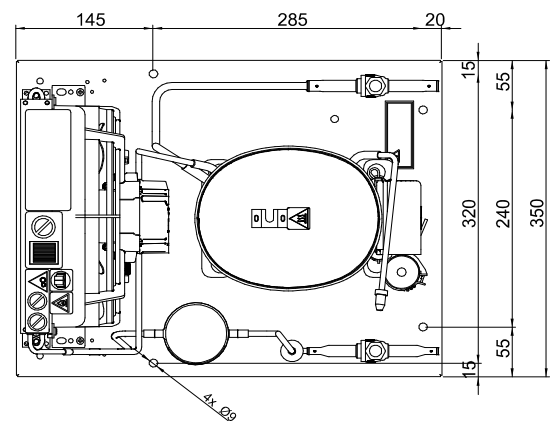
Dimensions

Condensing unit

Height x Width x Depth	297 x 350 x 450 [mm] / 11,7 x 13,8 x 17,7 [in]
Weight	15,8kg / 34,8lbs
Suction adapter	OD ø8mm / 1/3in
Discharge adapter	OD ø6mm / 1/4in
Process connector	ø6,2mm / 0,24in

Package data

Height x Width x Depth	340 x 372 x 570 [mm] / 13,4 x 14,6 x 22,4 [in]
Weight	18,8kg / 41,4lbs



Model

Designation **CU KLF6.6CND R290 230/1/50 VAL**

Sales code: 314H6005

Engineering code: CUKLF66CND0VE

Components Condensing-Unit / Spare Parts

Component	Type	Spare part code number
Compressor code	KLF6.6CND	106H2700
Condenser	Condenser (2 rows x 10 tubes)	314S0008
Fan motor	30W	314S0016
Blade code	ø230mm 28°	314S0025
Air flow	463m³/h	
Receiver code	Receiver 0,32 liter	314S0049
Suction valve code	OD ø8mm / 1/3in	-/-
Liquid valve code	OD ø6mm / 1/4in	-/-

Compressor starting equipment Spare part code number

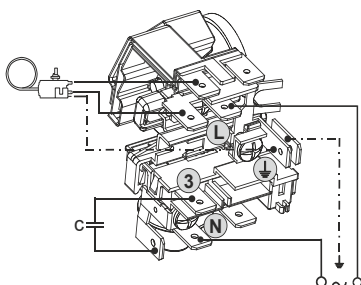
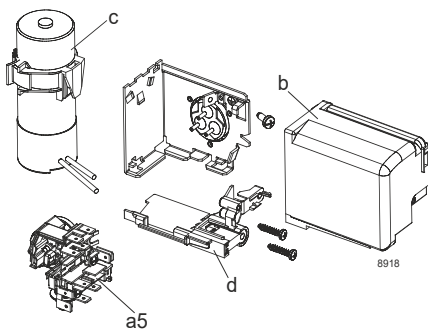
pos. a5 - current relay TY (T0337/L6 117U7071

pos. c - start capacitor (80µF, 6.3mV 117U5001

pos. b, d - cover + clamp + screws 103N0600

Wiring Sketch Compressor

CSIR



Model

Designation	CU KLF6.6CND R290 230/1/50 VAL	Sales code:	314H6005
		Engineering code:	CUKLF66CND0VE

Cooling performance - Conf. 1

Power supply	220-240V / 50Hz 1~	Voltage range	198 - 254V / 50Hz
Refr. charge - tech. limit	200g / 7,1oz		
Starter	HST / capillary tube or expansion valve		
Motor configuration	CSIR		
Refrigerant	R290		
Application	LBP+MBP		
Approvals	Eco design (EU) 2015/1095, CE, UK CA, VDE		

ambient temperature	[°C / °F]	25 / 77							(suction gas temperature [°C / °F]: 20 / 68, subcooling: 0K)
evaporating temperature	[°C / °F]	-35 / -31	-30 / -22	-25 / -13	-20 / -4	-10 / 14	0 / 32	10 / 50	
cooling capacity	[W]	214	262	319	382	527	686	849	
COP	[W/W]	1,18	1,31	1,45	1,59	1,84	2,04	2,18	
cooling capacity	[Btu/h]	731	896	1088	1305	1800	2344	2901	
power consumption	[W]	181	200	220	241	286	337	390	
current consumption	[A]	1,6	1,6	1,6	1,7	1,8	2	2,2	

ambient temperature	[°C / °F]	32 / 90							(suction gas temperature [°C / °F]: 20 / 68, subcooling: 0K)
evaporating temperature	[°C / °F]	-35 / -31	-30 / -22	-25 / -13	-20 / -4	-10 / 14	0 / 32		
cooling capacity	[W]	193	239	292	351	483	625		
COP	[W/W]	1,04	1,15	1,27	1,39	1,59	1,75		
cooling capacity	[Btu/h]	658	817	998	1199	1648	2134		
power consumption	[W]	185	207	230	253	304	358		
current consumption	[A]	1,6	1,6	1,7	1,7	1,9	2,1		

ambient temperature	[°C / °F]	38 / 100							(suction gas temperature [°C / °F]: 20 / 68, subcooling: 0K)
evaporating temperature	[°C / °F]	-35 / -31	-30 / -22	-25 / -13	-20 / -4	-10 / 14			
cooling capacity	[W]	174	219	270	324	444			
COP	[W/W]	0,92	1,03	1,13	1,23	1,4			
cooling capacity	[Btu/h]	596	749	921	1107	1515			
power consumption	[W]	189	213	238	264	318			
current consumption	[A]	1,6	1,6	1,7	1,8	1,9			

ambient temperature	[°C / °F]	43 / 109							(suction gas temperature [°C / °F]: 20 / 68, subcooling: 0K)
evaporating temperature	[°C / °F]	-35 / -31	-30 / -22	-25 / -13	-20 / -4				
cooling capacity	[W]	159	202	249	300				
COP	[W/W]	0,83	0,93	1,02	1,11				
cooling capacity	[Btu/h]	542	690	852	1026				
power consumption	[W]	191	217	244	271				
current consumption	[A]	1,6	1,6	1,7	1,8				