

Model

Designation

CU SCE15CNLX R290 230/1/50 CA



Sales code:

314H4000

Engineering code:

CUSCE15CNLXCE

Application Data

Power supply	220-240V / 50Hz 1~
Refrigerants	R290
Refr. charge - tech. limit	550g / 19,4oz
Starter	HST / capillary tube or expansion valve
Sound pressure (10m)	30,7dB(A)

Generic data

Voltage range	198 - 254V / 50Hz
Refrigerant	R290
Application	LBP
Rated performance	<u>pe=-25°C, Tsuc=20°C, Tamb=25°C, subcooling: 2K</u>
Cooling capacity	626W / 2137Btu/h
Power consumption	409,7W
Current consumption	2,6A
COP/EER	1,53 / 5,22Btu/Wh
Approvals	Eco design (EU) 2015/1095, CE, UK CA, VDE

Compressor

Designation	SCE15CNLX
Motor configuration	CSIR
Locked rotor amperage	15,87A
Rated load amperage	3,01A
Winding resistance main	4,62Ω
Winding resistance aux	15,94Ω
Oil quantity	550cm ³ / 18,6fl.oz
Oil type	POE
Horsepower rating	3/5 HP

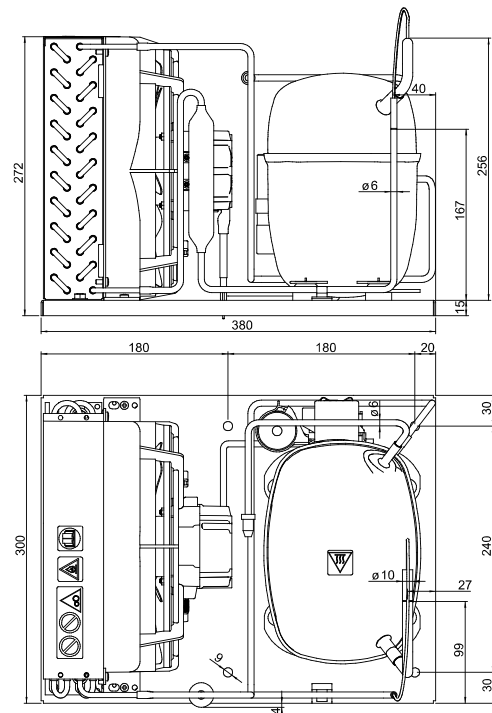
Dimensions

Condensing unit

Height x Width x Depth	272 x 300 x 380 [mm] / 10,7 x 11,8 x 15 [in]
Weight	20kg / 44,1lbs
Suction adapter	OD ø10mm / 2/5in
Discharge adapter	OD ø6mm / 1/4in
Process connector	ø6,2mm / 0,24in

Package data

Height x Width x Depth	300 x 340 x 494 [mm] / 11,8 x 13,4 x 19,4 [in]
Weight	23kg / 50,7lbs



Model

Designation **CU SCE15CNLX R290 230/1/50 CAP**

Sales code: 314H4000

Engineering code: CUSCE15CNLXCE

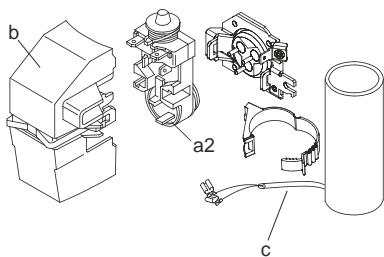
Components Condensing-Unit / Spare Parts

Component	Type	Spare part code number
Compressor code	SCE15CNLX	104H8548
Condenser	Condenser (4 rows x 10 tubes)	SP 314S0009
Fan motor	14W	MP 314S0016
Blade code	ø230mm 28°	SP 314S0025
Air flow	435,2m³/h	
Receiver code	not installed	-/-
Suction valve code	OD ø10mm / 2/5in	-/-
Liquid valve code	OD ø6mm / 1/4in	-/-

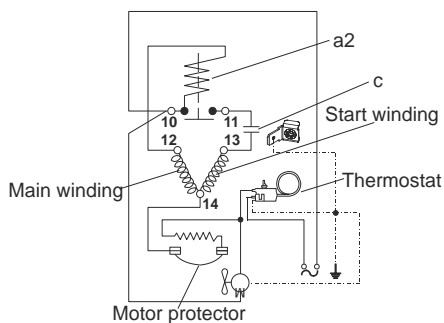
Compressor starting equipment	Spare part code number
pos. a2 - assy. relay + ext. protecto	117U7403
pos. c - start capacitor (80µF)	117U5017
pos. d - cord relief	103N1004
pos. b - plastic cover + clamp	117U1033

Wiring Sketch Compressor

CSIR



8883



Model

Designation **CU SCE15CNLX R290 230/1/50 CAP**

Sales code: 314H4000

Engineering code: CUSCE15CNLXCE

Cooling performance - Conf. 1

Power supply	220-240V / 50Hz 1~	Voltage range	198 - 254V / 50Hz
Refr. charge - tech. limit	550g / 19,4oz		
Starter	HST / capillary tube or expansion valve		
Motor configuration	CSIR		
Refrigerant	R290		
Application	LBP		
Approvals	Eco design (EU) 2015/1095, CE, UK CA, VDE		

ambient temperature	[°C / °F]	25 / 77 (suction gas temperature [°C / °F]: 20 / 68, subcooling: 2K)						
evaporating temperature	[°C / °F]	-40 / -40	-35 / -31	-30 / -22	-25 / -13	-20 / -4	-10 / 14	-5 / 23
cooling capacity	[W]	311	395	501	626	767	1079	1243
COP	[W/W]	1,13	1,25	1,39	1,53	1,66	1,87	1,94
cooling capacity	[Btu/h]	1063	1349	1710	2137	2618	3687	4244
power consumption	[W]	275	316	361	410	462	578	642
current consumption	[A]	2,2	2,3	2,4	2,6	2,7	3,2	3,4

ambient temperature	[°C / °F]	32 / 90 (suction gas temperature [°C / °F]: 20 / 68, subcooling: 2K)						
evaporating temperature	[°C / °F]	-40 / -40	-35 / -31	-30 / -22	-25 / -13	-20 / -4	-10 / 14	-5 / 23
cooling capacity	[W]	269	350	449	566	695	976	1120
COP	[W/W]	0,96	1,08	1,21	1,34	1,45	1,61	1,65
cooling capacity	[Btu/h]	917	1194	1535	1932	2373	3333	3826
power consumption	[W]	281	323	370	422	479	606	677
current consumption	[A]	2,3	2,4	2,5	2,6	2,8	3,3	3,6

ambient temperature	[°C / °F]	38 / 100 (suction gas temperature [°C / °F]: 20 / 68, subcooling: 2K)						
evaporating temperature	[°C / °F]	-40 / -40	-35 / -31	-30 / -22	-25 / -13	-20 / -4	-10 / 14	-5 / 23
cooling capacity	[W]	232	310	404	512	630	883	1011
COP	[W/W]	0,83	0,95	1,08	1,19	1,29	1,41	1,43
cooling capacity	[Btu/h]	794	1060	1381	1750	2153	3017	3452
power consumption	[W]	280	325	374	429	490	628	706
current consumption	[A]	2,3	2,3	2,4	2,6	2,8	3,4	3,8

ambient temperature	[°C / °F]	43 / 109 (suction gas temperature [°C / °F]: 20 / 68, subcooling: 2K)						
evaporating temperature	[°C / °F]	-40 / -40	-35 / -31	-30 / -22	-25 / -13	-20 / -4	-10 / 14	
cooling capacity	[W]	201	276	365	465	574	803	
COP	[W/W]	0,73	0,85	0,97	1,07	1,15	1,24	
cooling capacity	[Btu/h]	687	943	1247	1590	1961	2743	
power consumption	[W]	277	323	375	434	498	646	
current consumption	[A]	2,2	2,3	2,4	2,6	2,9	3,6	