

Model

Designation **CU SCE15CNL R290 230/1/50 CAP**



Sales code: 314H4006
Engineering code: CUSCE15CNLXVE

Application Data

Power supply 220-240V / 50Hz 1~
Refrigerants R290
Refr. charge - tech. limit 550g / 19,4oz
Starter HST / capillary tube or expansion valve
Sound pressure (10m)

Generic data

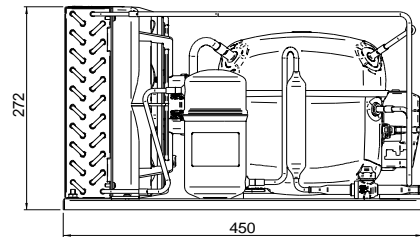
Voltage range 198 - 254V / 50Hz
Refrigerant R290
Application LBP

Rated performance pe=-25°C, Tsuc=20°C, Tamb=25°C, subcooling: 0K
Cooling capacity 624W / 2130Btu/h
Power consumption 423,4W
Current consumption 2,6A
COP/EER 1,47 / 5,03Btu/Wh

Approvals Eco design (EU) 2015/1095,
CE, UK CA, VDE

Compressor

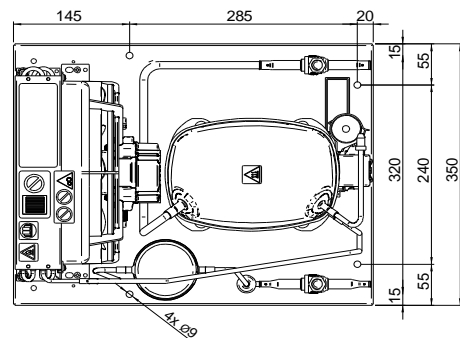
Designation **SCE15CNLX**
Motor configuration CSIR
Locked rotor amperage 15,87A
Rated load amperage 3,01A
Winding resistance main 4,62Ω
Winding resistance aux 15,94Ω
Oil quantity 550cm³ / 18,6fl.oz
Oil type POE
Horsepower rating 3/5 HP



Dimensions

Condensing unit

Height x Width x Depth 297 x 350 x 450 [mm] / 11,7 x 13,8 x 17,7 [in]
Weight 21,8kg / 48,1lbs
Suction adapter OD ø10mm / 2/5in
Discharge adapter OD ø6mm / 1/4in
Process connector ø6,2mm / 0,24in



Package data

Height x Width x Depth 340 x 372 x 570 [mm] / 13,4 x 14,6 x 22,4 [in]
Weight 24,8kg / 54,7lbs

Model

Designation **CU SCE15CNL R290 230/1/50 CAP**

Sales code: 314H4006

Engineering code: CUSCE15CNLXVE

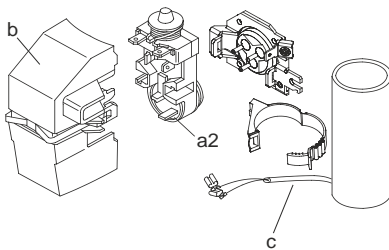
Components Condensing-Unit / Spare Parts

Component	Type	Spare part code number
Compressor code	SCE15CNLX	104H8548
Condenser	Condenser (4 rows x 10 tubes)	314S0009
Fan motor	30W	314S0016
Blade code	ø230mm 28°	314S0025
Air flow	435,2m³/h	
Receiver code	Receiver 0,66 liter	314S0050
Suction valve code	OD ø10mm / 2/5in	-/-
Liquid valve code	OD ø6mm / 1/4in	-/-

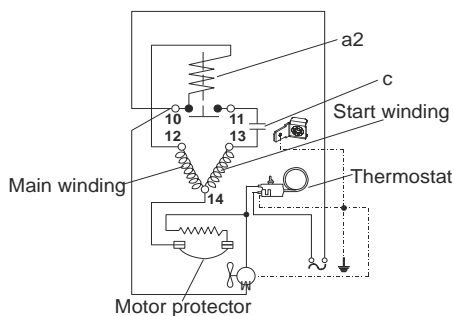
Compressor starting equipment	Spare part code number
pos. a2 - assy. relay + ext. protecto	117U7403
pos. c - start capacitor (80µF)	117U5017
pos. d - cord relief	103N1004
pos. b - plastic cover + clamp	117U1033

Wiring Sketch Compressor

CSIR



8893



Model

Designation **CU SCE15CNL R290 230/1/50 CAP**

Sales code: 314H4006

Engineering code: CUSCE15CNLXVE

Cooling performance - Conf. 1

Power supply 220-240V / 50Hz 1~ Voltage range 198 - 254V / 50Hz

Refr. charge - tech. limit 550g / 19,4oz

Starter HST / capillary tube or expansion valve

Motor configuration CSIR

Refrigerant R290

Application LBP

Approvals Eco design (EU) 2015/1095, CE, UK CA, VDE

ambient temperature	[°C / °F]	25 / 77							(suction gas temperature [°C / °F]: 20 / 68, subcooling: 0K)
evaporating temperature	[°C / °F]	-40 / -40	-35 / -31	-30 / -22	-25 / -13	-20 / -4	-10 / 14	-5 / 23	
cooling capacity	[W]	311	394	499	624	765	1081	1247	
COP	[W/W]	1,07	1,19	1,33	1,48	1,61	1,84	1,92	
cooling capacity	[Btu/h]	1062	1345	1704	2130	2612	3690	4258	
power consumption	[W]	290	331	375	423	475	587	648	
current consumption	[A]	2,3	2,4	2,5	2,6	2,8	3,2	3,5	

ambient temperature	[°C / °F]	32 / 90							(suction gas temperature [°C / °F]: 20 / 68, subcooling: 0K)
evaporating temperature	[°C / °F]	-40 / -40	-35 / -31	-30 / -22	-25 / -13	-20 / -4	-10 / 14	-5 / 23	
cooling capacity	[W]	268	348	448	564	693	977	1124	
COP	[W/W]	0,91	1,03	1,16	1,29	1,41	1,59	1,64	
cooling capacity	[Btu/h]	915	1189	1529	1925	2367	3337	3840	
power consumption	[W]	296	339	386	437	492	615	684	
current consumption	[A]	2,4	2,4	2,5	2,7	2,9	3,3	3,6	

ambient temperature	[°C / °F]	38 / 100							(suction gas temperature [°C / °F]: 20 / 68, subcooling: 0K)
evaporating temperature	[°C / °F]	-40 / -40	-35 / -31	-30 / -22	-25 / -13	-20 / -4	-10 / 14	-5 / 23	
cooling capacity	[W]	232	309	403	511	629	885	1016	
COP	[W/W]	0,78	0,91	1,03	1,15	1,25	1,39	1,42	
cooling capacity	[Btu/h]	792	1056	1376	1744	2148	3023	3469	
power consumption	[W]	297	341	390	444	504	638	713	
current consumption	[A]	2,3	2,4	2,5	2,7	2,9	3,5	3,8	

ambient temperature	[°C / °F]	43 / 109							(suction gas temperature [°C / °F]: 20 / 68, subcooling: 0K)
evaporating temperature	[°C / °F]	-40 / -40	-35 / -31	-30 / -22	-25 / -13	-20 / -4	-10 / 14		
cooling capacity	[W]	201	276	364	464	574	805		
COP	[W/W]	0,68	0,81	0,93	1,03	1,12	1,23		
cooling capacity	[Btu/h]	687	941	1243	1585	1959	2750		
power consumption	[W]	294	339	391	449	512	656		
current consumption	[A]	2,3	2,4	2,5	2,7	2,9	3,6		