

## Model

Designation	<b>HAD55AA</b>	<b>220-240V/50Hz ~</b>	Sales code:	<b>CDO00208</b>
-------------	----------------	------------------------	-------------	-----------------

## Compressor design

Oil type	Mineral	Refrigerant(s)	<b>R600a</b>
Oil viscosity	2,3cSt	Displacement	5,5cm <sup>3</sup> / 0,34cu.in
Oil quantity	77cm <sup>3</sup> / 2,6fl.oz	Compressors on pallet	168
Refr. charge - tech. limit	150g / 5,3oz		
Free gas volume comp.	837cm <sup>3</sup> / 28,3fl.oz		
Weight	3,9kg / 8,6lbs		
Motor protection	external		
Winding resistance main	48,2Ω (at 25°C)		
Winding resistance aux	42,7Ω (at 25°C)		
Max. winding temp.	120°C / 248°F		
Max. discharge temp.	120°C / 248°F		



## General - Configurations with HAD55AA

	<b>Conf. 1</b>
Motorconfiguration	RSCR
Power supply (nominal)	220-240V/50Hz
Number of phases	1
Voltage range	187-264V
Approvals	VDE
Starting torque	LST
Note	Electrical equipment will be pre-assembled to compressor.

## Applications with HAD55AA

	<b>Conf. 1</b>
Refrigerant	R600a
Application	LBP
System cooling	static
Hot gas defrost	-/-
Long interval pull down	-/-

## Electrical data - Configurations with HAD55AA

	<b>Conf. 1</b>
Starting device type	PTC
Run capacitor	2μF
Start capacitor	-/-
LRA (locked rotor amps / 4s)	1,66A
RLA (rated load amps / 1s)	
Cut in current	3,91A
IP class	21

## Model

Designation

**HAD55AA**

220-240V/50Hz ~

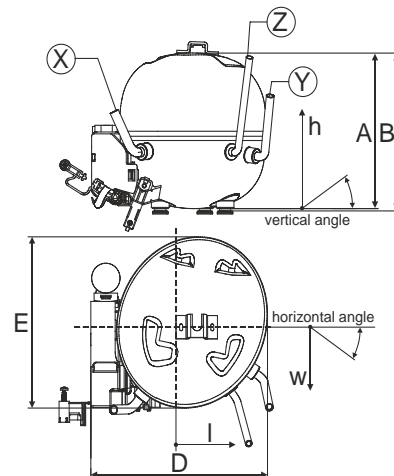
Sales code:

**CDO00208**

## Compressor dimensions

Housing	A Height	133mm / 5,24in
	B Height	134,5mm / 5,3in
	C Length shell	135mm / 5,31in
	D Length w. cover	159mm / 6,26in
	E Width	147mm / 5,79in

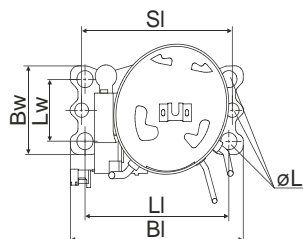
Connectors		Suction	Discharge	Process
		X	Y	Z
Diameter	[mm]	øi 6,1-6,3	øi 4,9-5,1	øo 5,92-6,08
	(i:inside, o:outside) [in]	øi 0,24-0,25	øi 0,19-0,2	øo 0,23-0,24
Material		copper	steel/CU	copper
Horizontal angle	±2°	0°	80°	74°
Vertical angle	±2°	79°	79°	72°
Position l/h/w	[mm]	-54/83/74	87/96/72	69/130/103
	[in]	-2,1/3,3/2,9	3,4/3,8/2,8	2,7/5,1/4,1
Straight tube l.	[mm]	14	14	14
	[in]	0,5	0,5	0,5



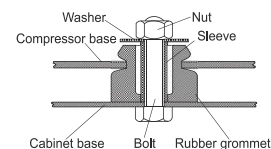
## Compressor fixation

### Adapter plate

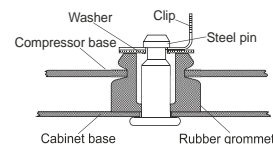
### Bolt joint



Baseplate	[mm]	[inch]
BI	204	8.03
Bw	100	3.94
Large holes	[mm]	[inch]
LI	170	6.7
Lw	70	2.76
SI	178	7
øL	ø 16	ø 0.63



### Snap-on



For standard mounting	one comp.	multi pack
Adapter plate	157008_	
Bolt joint   M6   ø16mm	118-1917	118-1918
Bolt joint   ø1/4"   ø16mm	118-1946	
Snap-on   ø7,3   ø16mm	118-1947	118-1919

## Application notes

Various options of housing are possible (dip-tray fixture) - please contact SECOP-Sales.

Various options of connectors are possible - please contact SECOP-Sales.

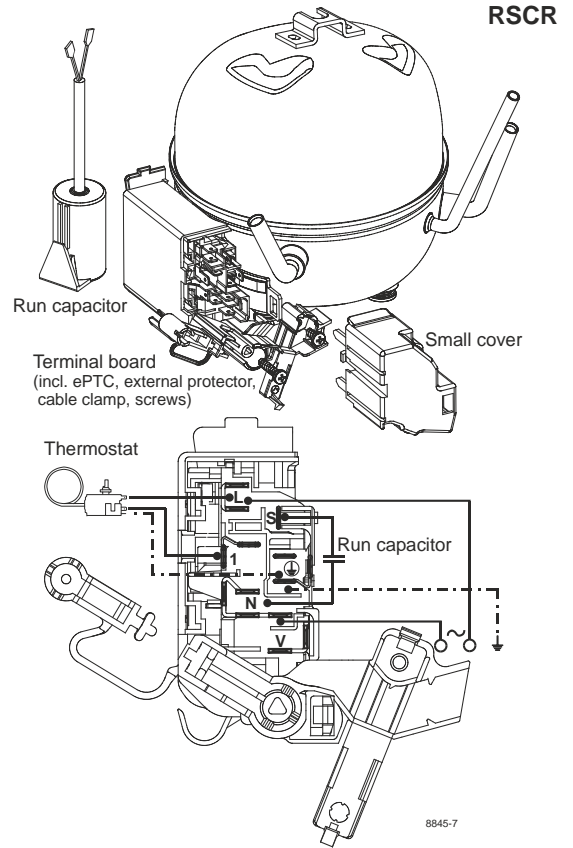
## Model

Designation	<b>HAD55AA</b>	<b>220-240V/50Hz</b>	<b>Conf. 1</b>	Sales code:	<b>CDO00208</b>
-------------	----------------	----------------------	----------------	-------------	-----------------

## Configuration

Motorconfiguration	RSCR
Power supply (nominal)	220-240V/50Hz 1~
Refrigerant	R600a
Application	LBP
Voltage range	187-264V
Starting torque	LST
Approvals	VDE

## Electrical accessories / wiring diagram

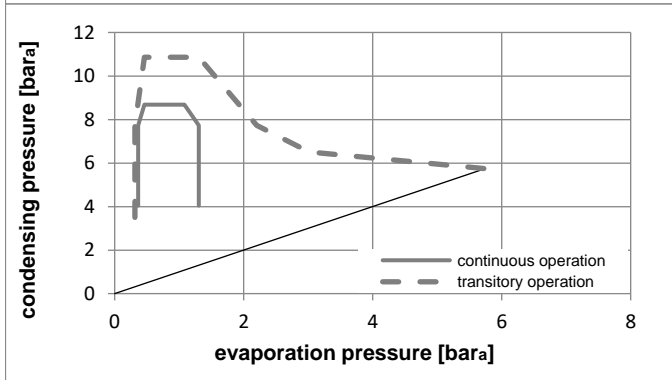
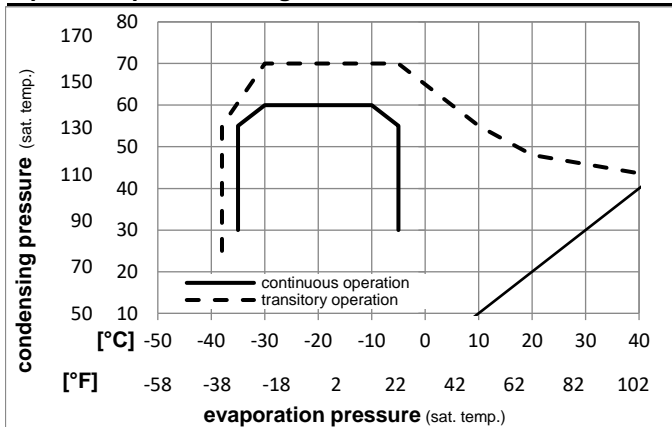


## Ambient temperatures / system cooling

Ambient temperature min.:	10°C / 50°F
Ambient temperature max.:	43°C / 110°F

System cooling (n/a: outside limits)			
T ambient	LBP	MBP	HBP
32°C / 90°F	static	n/a	n/a
38°C / 100°F	static	n/a	n/a
43°C / 110°F	static	n/a	n/a

## Operation pressure range



### Components (will be pre-assembled)

- terminal board (ePTC, 4.8mm) BX E6
- motor protector BDG AE 88 AHM x E6
- run capacitor (2µF, 4.8mm) cap. 2µF
- cover terminal board 160943\_

## Model

Designation **HAD55AA 220-240V/50Hz** Conf. 1 Sales code: **CDO00208**

## Optimization + standard conditions

220V/50Hz, RSCR, static, VDE

	Evaporating pressure (saturation temperature)				Condensing pressure (saturation temperature)						Power consumption				Ref. mass flow m
	pe	pc	RGT	Tliq	Cooling capacity			COP	EER			P1	I		
	[°C]	[°F]	[°C]	[°C]	[W]	[Btu/h]	[kcal/h]	[W/W]	[Btu/Wh]	[kcal/Wh]	[W]	[A]	[kg/h]		
	-23,3	45	32,2	32,2	105,0	359	90,4	2,10	7,17	1,81	50,0	0,23	1,13	opt	
	-9,94	113	90	90											
	-23,3	54,4	32,2	32,2	100,0	341	86,0	1,87	6,39	1,61	53,4	0,24	1,07	ASHRAE LBP	
	-10	130	90	90											
	-25	55	32	55	75,1	257	64,6	1,47	5,01	1,26	51,2	0,23	0,98	cecomaf LBP	
	-13	131	89,6	131											
	-23,3	48,9	4,44	48,9	81,0	276	69,7	1,57	5,37	1,35	51,5	0,23	1,18	ARI540 LBP	
	-10	120	40	120											
	-23,3	40,6	32,2	32,2	107,2	366	92,2	2,23	7,61	1,92	48,1	0,22	1,15	AHAM LBP	
	-10	105	90	90											
	-35	45	32	45	47,0	160	40,4	1,43	4,90	1,23	32,8	0,15	0,56	opt	
	-31	113	89,6	113											

## Performance tables

220V/50Hz, RSCR, static, VDE

	pe	Cooling capacity			COP	EER			P1	I	m
	[°C]	[°F]	[W]	[Btu/h]	[kcal/h]	[W/W]	[Btu/Wh]	[kcal/Wh]	[W]	[A]	[kg/h]
[°C / °F]	-35	-31	47,0	160	40,4	1,43	4,90	1,23	32,8	0,15	0,56
cond. pressure	-30	-22	65,8	225	56,6	1,58	5,41	1,36	41,5	0,19	0,78
pc= 45/113	-25	-13	86,8	296	74,7	1,80	6,16	1,55	48,1	0,22	1,03
return gas temp.	-23,3	-10	94,6	323	81,5	1,89	6,46	1,63	50,0	0,23	1,13
RGT= 32/90	-20	-4	111,3	380	95,8	2,08	7,09	1,79	53,6	0,24	1,33
liquid temp	-15	5	140,5	480	120,9	2,37	8,08	2,04	59,4	0,27	1,68
Tliq= 45/113	-5	23	218,6	746	188,1	2,86	9,77	2,46	76,4	0,34	2,62
[°C / °F]	-35	-31	38,7	132	33,3	1,16	3,96	1,00	33,4	0,15	0,50
cond. pressure	-30	-22	56,0	191	48,2	1,29	4,42	1,11	43,3	0,20	0,73
pc= 55/131	-25	-13	75,1	257	64,6	1,47	5,01	1,26	51,2	0,23	0,98
return gas temp	-23,3	-10	82,3	281	70,8	1,53	5,24	1,32	53,6	0,24	1,07
RGT= 32/90	-20	-4	97,3	332	83,8	1,67	5,70	1,44	58,3	0,26	1,27
liquid temp	-15	5	123,9	423	106,7	1,88	6,43	1,62	65,8	0,30	1,62
Tliq= 55/131	-5	23	195,4	667	168,2	2,25	7,67	1,93	87,0	0,39	2,57