

Model

Designation	HTD35AA	220-240V/50Hz ~	Sales code:	CDO00217
-------------	----------------	-----------------	-------------	-----------------

Compressor design

Oil type	Mineral	Refrigerant(s)	R600a
Oil viscosity	2,3cSt	Displacement	3,5cm ³ / 0,21cu.in
Oil quantity	77cm ³ / 2,6fl.oz	Compressors on pallet	168
Refr. charge - tech. limit	150g / 5,3oz		
Free gas volume comp.	837cm ³ / 28,3fl.oz		
Weight	3,9kg / 8,6lbs		
Motor protection	external		
Winding resistance main	66,7Ω (at 25°C)		
Winding resistance aux	54,6Ω (at 25°C)		
Max. winding temp.	120°C / 248°F		
Max. discharge temp.	120°C / 248°F		



General - Configurations with HTD35AA

	Conf. 1
Motorconfiguration	RSIR
Power supply (nominal)	220-240V/50Hz
Number of phases	1
Voltage range	187-264V
Approvals	VDE
Starting torque	LST
Note	Electrical equipment will be pre-assembled to compressor.

Applications with HTD35AA

	Conf. 1
Refrigerant	R600a
Application	LBP
System cooling	static
Hot gas defrost	-/-
Long interval pull down	-/-

Electrical data - Configurations with HTD35AA

	Conf. 1
Starting device type	PTC
Run capacitor	-/-
Start capacitor	-/-
LRA (locked rotor amps / 4s)	1,45A
RLA (rated load amps / 1s)	
Cut in current	3,35A
IP class	21

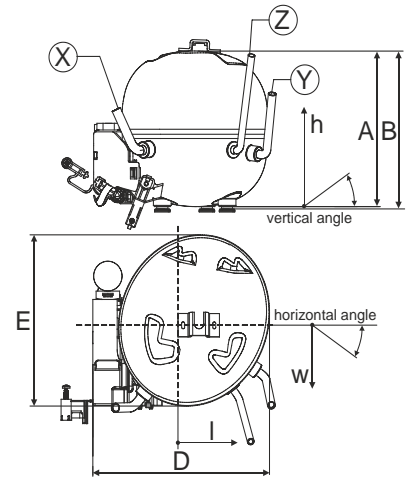
Model

Designation	HTD35AA	220-240V/50Hz ~	Sales code:	CDO00217
-------------	----------------	------------------------	-------------	-----------------

Compressor dimensions

Housing	A Height	133mm / 5,24in
	B Height	134,5mm / 5,3in
	C Length shell	135mm / 5,31in
	D Length w. cover	159mm / 6,26in
	E Width	147mm / 5,79in

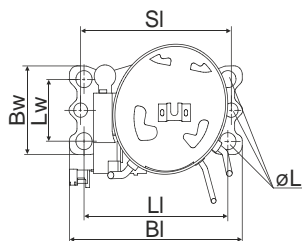
Connectors		Suction	Discharge	Process
		X	Y	Z
Diameter	[mm]	øi 6,1-6,3	øi 4,9-5,1	øo 5,92-6,08
	(i:inside, o:outside) [in]	øi 0,24-0,25	øi 0,19-0,2	øo 0,23-0,24
Material		copper	steel/CU	copper
Horizontal angle	±2°	0°	80°	74°
Vertical angle	±2°	79°	79°	72°
Position l/h/w	[mm]	-54/83/74	87/96/72	69/130/103
	[in]	-2,1/3,3/2,9	3,4/3,8/2,8	2,7/5,1/4,1
Straight tube l.	[mm]	14	14	14
	[in]	0,5	0,5	0,5



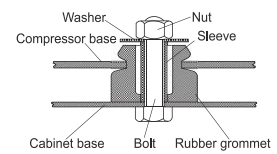
Compressor fixation

Adapter plate

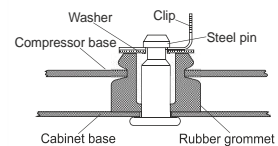
Bolt joint



Baseplate	[mm]	[inch]
BI	204	8.03
Bw	100	3.94
Large holes	[mm]	[inch]
LI	170	6.7
Lw	70	2.76
SI	178	7
øL	ø 16	ø 0.63



Snap-on



For standard mounting	one comp.	multi pack
Adapter plate	157008_	
Bolt joint M6 ø16mm	118-1917	118-1918
Bolt joint ø1/4" ø16mm	118-1946	
Snap-on ø7,3 ø16mm	118-1947	118-1919

Application notes

Various options of housing are possible (dip-tray fixture) - please contact SECOP-Sales.

Various options of connectors are possible - please contact SECOP-Sales.

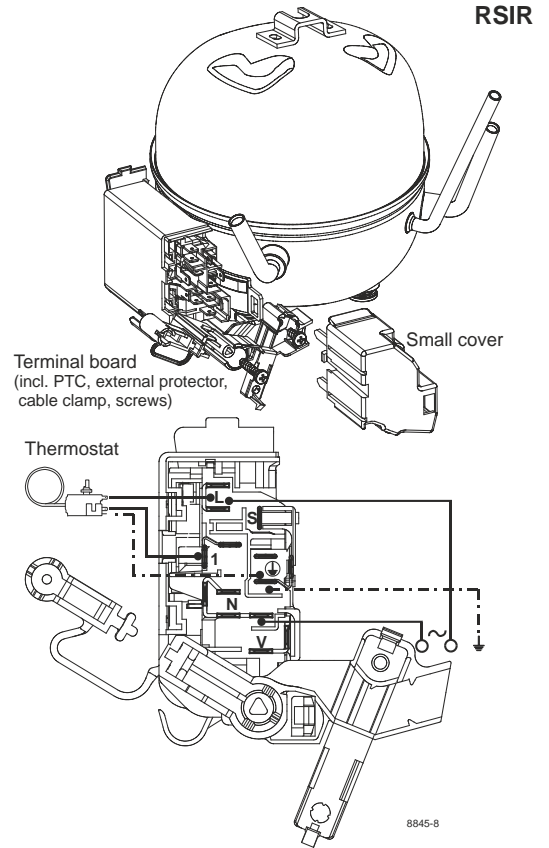
Model

Designation **HTD35AA** **220-240V/50Hz** Conf. 1 Sales code: **CDO00217**

Configuration

Motorconfiguration **RSIR**
 Power supply (nominal) **220-240V/50Hz 1~**
 Refrigerant **R600a**
 Application **LBP**
 Voltage range **187-264V**
 Starting torque **LST**
 Approvals **VDE**

Electrical accessories / wiring diagram

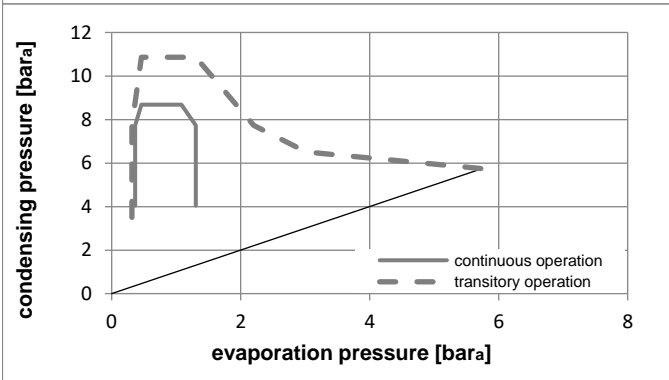
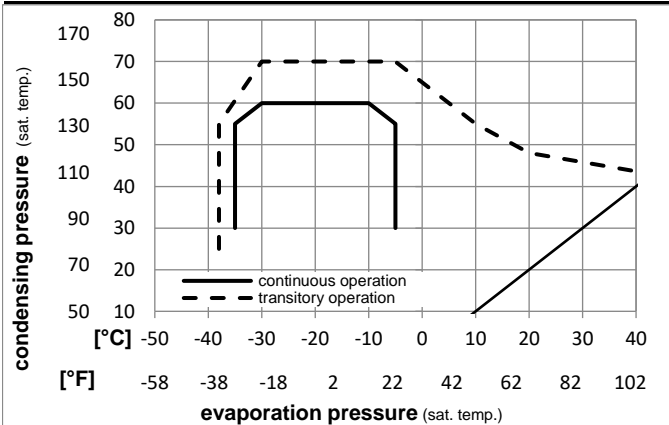


Ambient temperatures / system cooling

Ambient temperature min.: **10°C / 50°F**
 Ambient temperature max.: **43°C / 110°F**

System cooling (n/a: outside limits)			
T ambient	LBP	MBP	HBP
32°C / 90°F	static	n/a	n/a
38°C / 100°F	static	n/a	n/a
43°C / 110°F	static	n/a	n/a

Operation pressure range



Components (will be pre-assembled)

- terminal board (PTC,4.8mm) BN E7
- motor protector BDG AE 90 AHM x E7
- cover terminal board 160943_

Model

Designation **HTD35AA 220-240V/50Hz** Conf. 1 Sales code: **CDO00217**

Optimization + standard conditions

220V/50Hz, RSIR, static, VDE

	Evaporating pressure (saturation temperature)				Condensing pressure (saturation temperature)						Power consumption			Ref. mass flow
	pe	pc	RGT	Tliq	Cooling capacity			COP	EER		P1	I	m	
	[°C]	[°F]	[°C]	[°C]	[W]	[Btu/h]	[kcal/h]	[W/W]	[Btu/Wh]	[kcal/Wh]	[W]	[A]	[kg/h]	
	-23,3	45	32,2	32,2	65,7	224	56,5	1,89	6,44	1,62	34,9	0,23	0,71	opt
	-9,94	113	90	90										
	-23,3	54,4	32,2	32,2	60,9	208	52,4	1,67	5,72	1,44	36,4	0,23	0,65	ASHRAE LBP
	-10	130	90	90										
	-25	55	32	55	45,2	154	38,9	1,31	4,48	1,13	34,5	0,22	0,59	cecomaf LBP
	-13	131	89,6	131										
	-23,3	48,9	4,44	48,9	50,1	171	43,1	1,41	4,81	1,21	35,5	0,23	0,73	ARI540 LBP
	-10	120	40	120										
	-23,3	40,6	32,2	32,2	68,1	233	58,6	2,01	6,85	1,73	33,9	0,22	0,73	AHAM LBP
	-10	105	90	90										
	-35	45	32	45	28,3	97	24,4	1,25	4,27	1,08	22,6	0,19	0,34	opt
	-31	113	89,6	113										

Performance tables

220V/50Hz, RSIR, static, VDE

	pe	Cooling capacity			COP	EER		P1	I	m	
	[°C]	[°F]	[W]	[Btu/h]	[kcal/h]	[W/W]	[Btu/Wh]	[kcal/Wh]	[W]	[A]	[kg/h]
[°C / °F]	-35	-31	28,3	97	24,4	1,25	4,27	1,08	22,6	0,19	0,34
cond. pressure	-30	-22	40,0	137	34,5	1,42	4,86	1,23	28,1	0,21	0,48
pc= 45/113	-25	-13	53,9	184	46,4	1,62	5,55	1,40	33,2	0,22	0,64
return gas temp.	-23,3	-10	59,2	202	51,0	1,70	5,80	1,46	34,9	0,23	0,71
RGT= 32/90	-20	-4	70,6	241	60,7	1,86	6,34	1,60	38,0	0,24	0,84
liquid temp	-15	5	90,7	310	78,0	2,12	7,24	1,83	42,8	0,25	1,08
Tliq= 45/113	-5	23	143,7	491	123,7	2,74	9,34	2,35	52,5	0,29	1,73
[°C / °F]	-35	-31	21,0	72	18,1	0,95	3,23	0,81	22,2	0,19	0,27
cond. pressure	-30	-22	32,3	110	27,8	1,13	3,87	0,98	28,5	0,21	0,42
pc= 55/131	-25	-13	45,2	154	38,9	1,31	4,48	1,13	34,5	0,22	0,59
return gas temp	-23,3	-10	50,0	171	43,0	1,37	4,68	1,18	36,5	0,23	0,65
RGT= 32/90	-20	-4	60,3	206	51,9	1,49	5,10	1,29	40,3	0,24	0,79
liquid temp	-15	5	78,2	267	67,3	1,69	5,77	1,45	46,3	0,27	1,02
Tliq= 55/131	-5	23	125,2	428	107,8	2,13	7,27	1,83	58,8	0,32	1,65