

## Model

Designation	<b>HTD45AA</b>	<b>220-240V/50Hz ~</b>	Sales code:	<b>CDO00214</b>
-------------	----------------	------------------------	-------------	-----------------

## Compressor design

Oil type	Mineral	Refrigerant(s)	<b>R600a</b>
Oil viscosity	2,3cSt	Displacement	4,5cm <sup>3</sup> / 0,27cu.in
Oil quantity	77cm <sup>3</sup> / 2,6fl.oz	Compressors on pallet	168
Refr. charge - tech. limit	150g / 5,3oz		
Free gas volume comp.	837cm <sup>3</sup> / 28,3fl.oz		
Weight	3,9kg / 8,6lbs		
Motor protection	external		
Winding resistance main	46,7Ω (at 25°C)		
Winding resistance aux	26,5Ω (at 25°C)		
Max. winding temp.	120°C / 248°F		
Max. discharge temp.	120°C / 248°F		



## General - Configurations with HTD45AA

	<b>Conf. 1</b>
Motorconfiguration	RSIR
Power supply (nominal)	220-240V/50Hz
Number of phases	1
Voltage range	187-264V
Approvals	VDE
Starting torque	LST
Note	Electrical equipment will be pre-assembled to compressor.

## Applications with HTD45AA

	<b>Conf. 1</b>
Refrigerant	R600a
Application	LBP
System cooling	static
Hot gas defrost	-/-
Long interval pull down	-/-

## Electrical data - Configurations with HTD45AA

	<b>Conf. 1</b>
Starting device type	PTC
Run capacitor	-/-
Start capacitor	-/-
LRA (locked rotor amps / 4s)	1,85A
RLA (rated load amps / 1s)	
Cut in current	4,7A
IP class	21

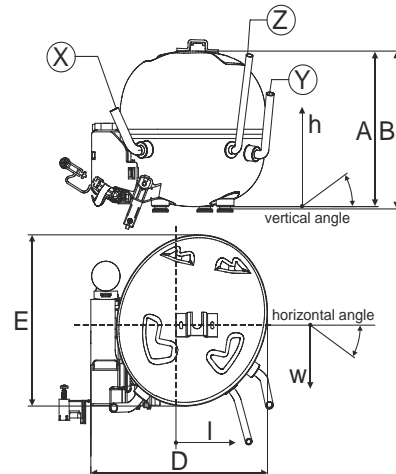
## Model

Designation	<b>HTD45AA</b>	220-240V/50Hz ~	Sales code:	<b>CDO00214</b>
-------------	----------------	-----------------	-------------	-----------------

## Compressor dimensions

<b>Housing</b>	A Height	133mm / 5,24in
	B Height	134,5mm / 5,3in
	C Length shell	135mm / 5,31in
	D Length w. cover	159mm / 6,26in
	E Width	147mm / 5,79in

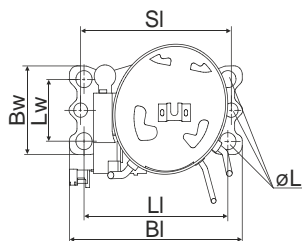
Connectors		Suction	Discharge	Process
		X	Y	Z
Diameter	[mm]	øi 6,1-6,3	øi 4,9-5,1	øo 5,92-6,08
	(i:inside, o:outside) [in]	øi 0,24-0,25	øi 0,19-0,2	øo 0,23-0,24
Material		copper	steel/CU	copper
Horizontal angle	±2°	0°	80°	74°
Vertical angle	±2°	79°	79°	72°
Position l/h/w	[mm]	-54/83/74	87/96/72	69/130/103
	[in]	-2,1/3,3/2,9	3,4/3,8/2,8	2,7/5,1/4,1
Straight tube l.	[mm]	14	14	14
	[in]	0,5	0,5	0,5



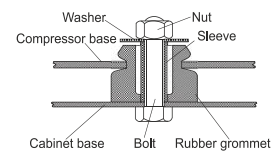
## Compressor fixation

### Adapter plate

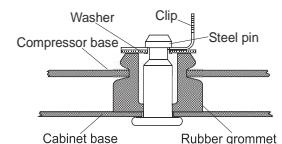
### Bolt joint



Baseplate	[mm]	[inch]
BI	204	8.03
Bw	100	3.94
Large holes		
LI	170	6.7
Lw	70	2.76
SI	178	7
øL	ø 16	ø 0.63



### Snap-on



For standard mounting	one comp.	multi pack
Adapter plate	157008_	
Bolt joint   M6   ø16mm	118-1917	118-1918
Bolt joint   ø1/4"   ø16mm	118-1946	
Snap-on   ø7,3   ø16mm	118-1947	118-1919

## Application notes

Various options of housing are possible (dip-tray fixture) - please contact SECOP-Sales.

Various options of connectors are possible - please contact SECOP-Sales.

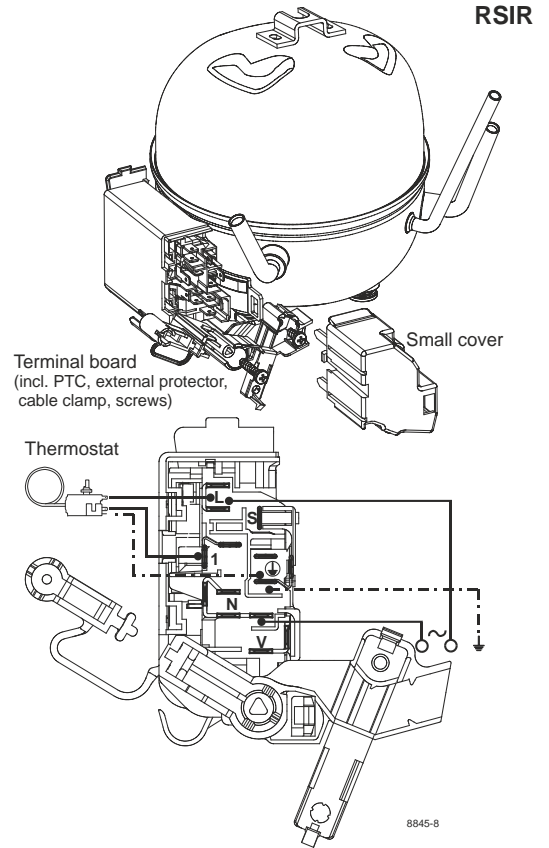
## Model

Designation **HTD45AA** **220-240V/50Hz** Conf. 1 Sales code: **CDO00214**

## Configuration

Motorconfiguration RSIR  
 Power supply (nominal) 220-240V/50Hz 1~  
 Refrigerant R600a  
 Application LBP  
 Voltage range 187-264V  
 Starting torque LST  
 Approvals VDE

## Electrical accessories / wiring diagram

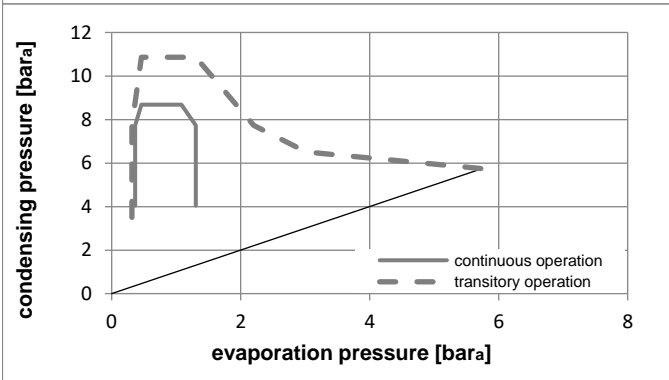
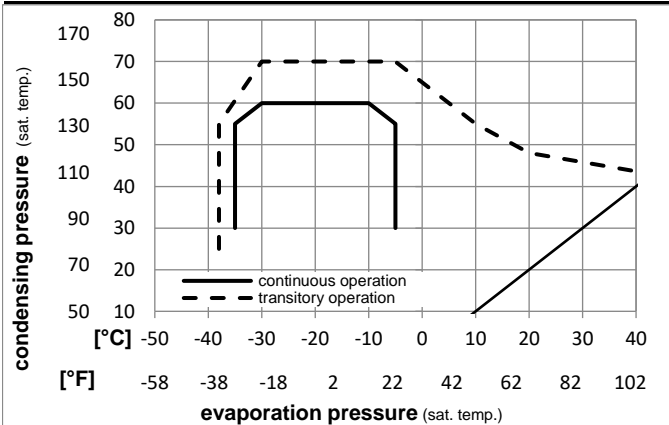


## Ambient temperatures / system cooling

Ambient temperature min.: 10°C / 50°F  
 Ambient temperature max.: 43°C / 110°F

System cooling (n/a: outside limits)			
T ambient	LBP	MBP	HBP
32°C / 90°F	static	n/a	n/a
38°C / 100°F	static	n/a	n/a
43°C / 110°F	static	n/a	n/a

## Operation pressure range



## Components (will be pre-assembled)

- terminal board (PTC,4.8mm) BN E4
- motor protector BDG AE 23 FLS 17 x E4
- cover terminal board 160943\_

## Model

Designation **HTD45AA 220-240V/50Hz** Conf. 1 Sales code: **CDO00214**

## Optimization + standard conditions

220V/50Hz, RSIR, static, VDE

	Evaporating pressure (saturation temperature)				Condensing pressure (saturation temperature)			Return gas temp.		Liquid temp.		Cooling capacity			COP	EER	Power consumption		Ref. mass flow
	pe	pc	RGT	Tliq	[W]	[Btu/h]	[kcal/h]	[W/W]	[Btu/W/h]	[kcal/Wh]	P1	I	m						
	[°C]	[°F]	[°C]	[°F]	[W]	[Btu/h]	[kcal/h]	[W/W]	[Btu/W/h]	[kcal/Wh]	[W]	[A]	[kg/h]						
	-23,3	45	32,2	32,2	93,0	318	80,0	1,90	6,49	1,64	49,0	0,31	1,00	opt					
	-9,94	113	90	90															
	-23,3	54,4	32,2	32,2	86,2	294	74,1	1,69	5,76	1,45	51,1	0,31	0,92	ASHRAE LBP					
	-10	130	90	90															
	-25	55	32	55	63,9	218	55,0	1,32	4,51	1,14	48,4	0,30	0,83	cecomaf LBP					
	-13	131	89,6	131															
	-23,3	48,9	4,44	48,9	70,9	242	61,0	1,42	4,85	1,22	49,9	0,31	1,04	ARI540 LBP					
	-10	120	40	120															
	-23,3	40,6	32,2	32,2	96,4	329	83,0	2,02	6,90	1,74	47,7	0,30	1,03	AHAM LBP					
	-10	105	90	90															
	-35	45	32	45	40,1	137	34,5	1,26	4,31	1,08	31,8	0,26	0,48	opt					
	-31	113	89,6	113															

## Performance tables

220V/50Hz, RSIR, static, VDE

	pe	Cooling capacity			COP	EER	P1	I	m		
	[°C]	[°F]	[W]	[Btu/h]	[kcal/h]	[W/W]	[Btu/W/h]	[kcal/Wh]	[W]	[A]	[kg/h]
[°C / °F]	-35	-31	40,1	137	34,5	1,26	4,31	1,08	31,8	0,26	0,48
cond. pressure	-30	-22	56,7	194	48,8	1,43	4,90	1,23	39,5	0,28	0,67
pc= 45/113	-25	-13	76,3	261	65,7	1,64	5,59	1,41	46,6	0,30	0,91
return gas temp.	-23,3	-10	83,8	286	72,2	1,71	5,85	1,47	49,0	0,31	1,00
RGT= 32/90	-20	-4	99,9	341	86,0	1,87	6,39	1,61	53,4	0,32	1,19
liquid temp	-15	5	128,4	438	110,5	2,14	7,30	1,84	60,1	0,34	1,53
Tliq= 45/113	-5	23	203,5	695	175,1	2,76	9,41	2,37	73,8	0,39	2,44
[°C / °F]	-35	-31	29,8	102	25,6	0,95	3,26	0,82	31,2	0,26	0,39
cond. pressure	-30	-22	45,7	156	39,4	1,14	3,90	0,98	40,0	0,28	0,60
pc= 55/131	-25	-13	63,9	218	55,0	1,32	4,51	1,14	48,4	0,30	0,83
return gas temp	-23,3	-10	70,8	242	60,9	1,38	4,72	1,19	51,2	0,31	0,92
RGT= 32/90	-20	-4	85,3	291	73,4	1,51	5,14	1,30	56,7	0,33	1,11
liquid temp	-15	5	110,7	378	95,3	1,70	5,82	1,47	65,0	0,35	1,45
Tliq= 55/131	-5	23	177,2	605	152,5	2,15	7,33	1,85	82,6	0,43	2,33