

## Model

Designation	<b>HTD60AA</b>	<b>220-240V/50Hz ~</b>	Sales code:	<b>CDO00216</b>
-------------	----------------	------------------------	-------------	-----------------

## Compressor design

Oil type	Mineral	Refrigerant(s)	<b>R600a</b>
Oil viscosity	2,3cSt	Displacement	6cm <sup>3</sup> / 0,37cu.in
Oil quantity	77cm <sup>3</sup> / 2,6fl.oz	Compressors on pallet	168
Refr. charge - tech. limit	150g / 5,3oz		
Free gas volume comp.	837cm <sup>3</sup> / 28,3fl.oz		
Weight	4kg / 8,8lbs		
Motor protection	external		
Winding resistance main	37,8Ω (at 25°C)		
Winding resistance aux	44,4Ω (at 25°C)		
Max. winding temp.	120°C / 248°F		
Max. discharge temp.	120°C / 248°F		



## General - Configurations with HTD60AA

	<b>Conf. 1</b>
Motorconfiguration	RSIR
Power supply (nominal)	220-240V/50Hz
Number of phases	1
Voltage range	187-264V
Approvals	VDE
Starting torque	LST
Note	Electrical equipment will be pre-assembled to compressor.

## Applications with HTD60AA

	<b>Conf. 1</b>
Refrigerant	R600a
Application	LBP
System cooling	static
Hot gas defrost	-/-
Long interval pull down	-/-

## Electrical data - Configurations with HTD60AA

	<b>Conf. 1</b>
Starting device type	PTC
Run capacitor	-/-
Start capacitor	-/-
LRA (locked rotor amps / 4s)	2,25A
RLA (rated load amps / 1s)	
Cut in current	4,42A
IP class	21

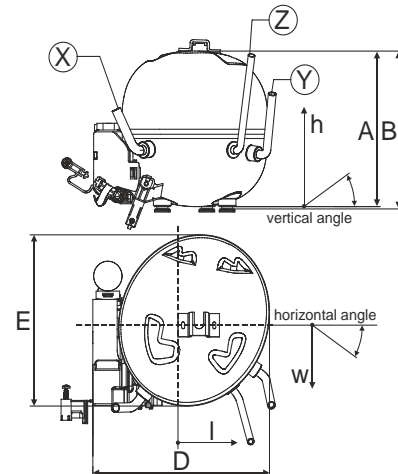
## Model

Designation	<b>HTD60AA</b>	<b>220-240V/50Hz ~</b>	Sales code:	<b>CDO00216</b>
-------------	----------------	------------------------	-------------	-----------------

## Compressor dimensions

<b>Housing</b>	A Height	133mm / 5,24in
	B Height	134,5mm / 5,3in
	C Length shell	135mm / 5,31in
	D Length w. cover	159mm / 6,26in
	E Width	147mm / 5,79in

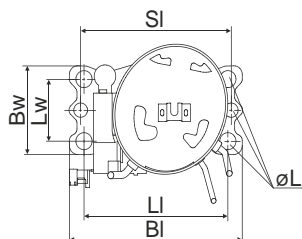
Connectors		Suction	Discharge	Process
		X	Y	Z
Diameter	[mm]	øi 6,1-6,3	øi 4,9-5,1	øo 5,92-6,08
	(i:inside, o:outside) [in]	øi 0,24-0,25	øi 0,19-0,2	øo 0,23-0,24
Material		copper	steel/CU	copper
Horizontal angle	±2°	0°	80°	74°
Vertical angle	±2°	79°	79°	72°
Position l/h/w	[mm]	-54/83/74	87/96/72	69/130/103
	[in]	-2,1/3,3/2,9	3,4/3,8/2,8	2,7/5,1/4,1
Straight tube l.	[mm]	14	14	14
	[in]	0,5	0,5	0,5



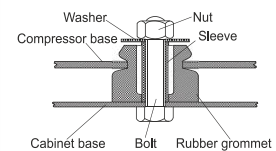
## Compressor fixation

### Adapter plate

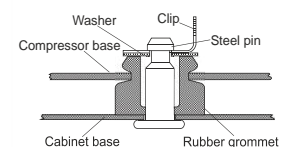
### Bolt joint



Baseplate	[mm]	[inch]
BI	204	8.03
Bw	100	3.94
Large holes	[mm]	[inch]
LI	170	6.7
Lw	70	2.76
SI	178	7
øL	ø 16	ø 0.63



### Snap-on



For standard mounting	one comp.	multi pack
Adapter plate	157008_	
Bolt joint   M6   ø16mm	118-1917	118-1918
Bolt joint   ø1/4"   ø16mm	118-1946	
Snap-on   ø7,3   ø16mm	118-1947	118-1919

## Application notes

Various options of housing are possible (dip-tray fixture) - please contact SECOP-Sales.

Various options of connectors are possible - please contact SECOP-Sales.

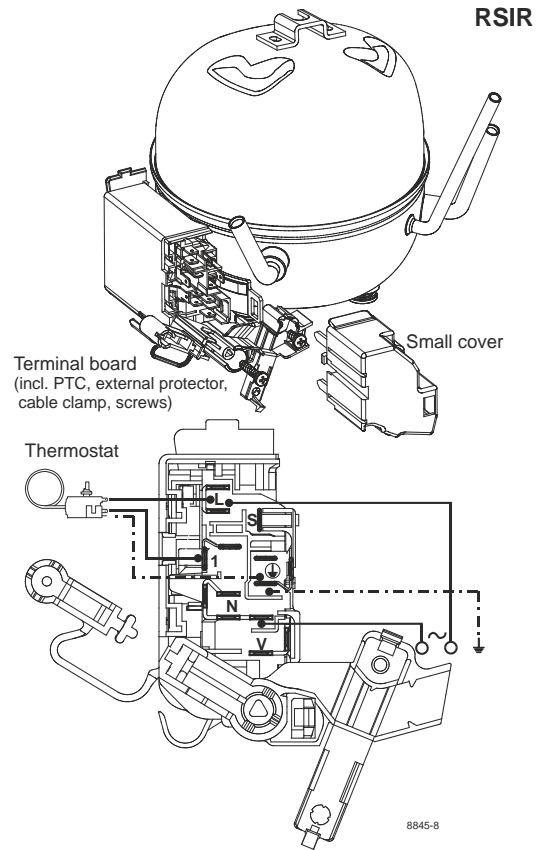
### Model

Designation	<b>HTD60AA</b>	<b>220-240V/50Hz</b>	<b>Conf. 1</b>	Sales code:	<b>CDO00216</b>
-------------	----------------	----------------------	----------------	-------------	-----------------

### Configuration

Motorconfiguration	RSIR
Power supply (nominal)	220-240V/50Hz 1~
Refrigerant	R600a
Application	LBP
Voltage range	187-264V
Starting torque	LST
Approvals	VDE

### Electrical accessories / wiring diagram

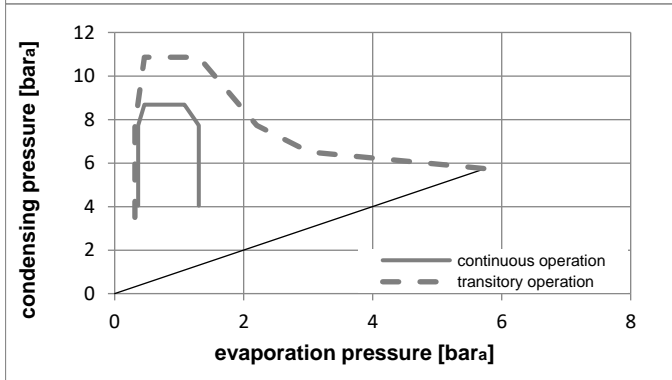
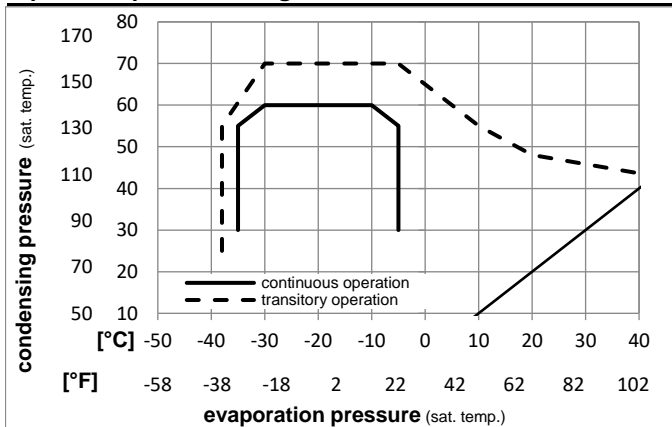


### Ambient temperatures / system cooling

Ambient temperature min.:	10°C / 50°F
Ambient temperature max.:	43°C / 110°F

System cooling (n/a: outside limits)			
T ambient	LBP	MBP	HBP
32°C / 90°F	static	n/a	n/a
38°C / 100°F	static	n/a	n/a
43°C / 110°F	static	n/a	n/a

### Operation pressure range



### Components (will be pre-assembled)

- terminal board (PTC,4.8mm) BN E4
- motor protector BDG AE 23 FLS 17 x E4
- cover terminal board 160943\_

### Model

Designation **HTD60AA 220-240V/50Hz** Conf. 1 Sales code: **CDO00216**

### Optimization + standard conditions

220V/50Hz, RSIR, static, VDE

	Evaporating pressure (saturation temperature)				Condensing pressure (saturation temperature)						Power consumption			Ref. mass flow m
	pe	pc	RGT	Tliq	Cooling capacity			COP	EER		P1	I		
	[°C]	[°F]	[°C]	[°C]	[W]	[Btu/h]	[kcal/h]	[W/W]	[Btu/Wh]	[kcal/Wh]	[W]	[A]	[kg/h]	
	-23,3	45	32,2	32,2	120,1	410	103,3	1,86	6,35	1,60	64,5	0,39	1,29	opt
	-9,94	113	90	90										
	-23,3	54,4	32,2	32,2	111,7	382	96,1	1,64	5,61	1,41	68,0	0,40	1,20	ASHRAE LBP
	-10	130	90	90										
	-25	55	32	55	83,7	286	72,0	1,29	4,40	1,11	64,9	0,39	1,09	cecomaf LBP
	-13	131	89,6	131										
	-23,3	48,9	4,44	48,9	91,6	313	78,9	1,38	4,72	1,19	66,3	0,40	1,34	ARI540 LBP
	-10	120	40	120										
	-23,3	40,6	32,2	32,2	124,0	423	106,7	2,00	6,83	1,72	62,0	0,38	1,33	AHAM LBP
	-10	105	90	90										
	-35	45	32	45	59,1	202	50,8	1,31	4,47	1,13	45,1	0,32	0,70	opt
	-31	113	89,6	113										

### Performance tables

220V/50Hz, RSIR, static, VDE

	pe	Cooling capacity			COP	EER		P1	I	m	
	[°C]	[°F]	[W]	[Btu/h]	[kcal/h]	[W/W]	[Btu/Wh]	[kcal/Wh]	[W]	[A]	[kg/h]
[°C / °F]	-35	-31	59,1	202	50,8	1,31	4,47	1,13	45,1	0,32	0,70
cond. pressure	-30	-22	77,2	264	66,5	1,44	4,91	1,24	53,7	0,35	0,92
pc= 45/113	-25	-13	99,5	340	85,7	1,61	5,50	1,39	61,8	0,38	1,18
return gas temp.	-23,3	-10	108,2	370	93,1	1,68	5,73	1,44	64,5	0,39	1,29
RGT= 32/90	-20	-4	127,0	434	109,3	1,82	6,22	1,57	69,7	0,41	1,51
liquid temp	-15	5	160,9	549	138,4	2,07	7,07	1,78	77,7	0,44	1,92
Tliq= 45/113	-5	23	251,9	860	216,8	2,66	9,08	2,29	94,7	0,50	3,02
[°C / °F]	-35	-31	44,0	150	37,9	0,97	3,30	0,83	45,5	0,32	0,57
cond. pressure	-30	-22	62,3	213	53,6	1,13	3,85	0,97	55,2	0,36	0,81
pc= 55/131	-25	-13	83,7	286	72,0	1,29	4,40	1,11	64,9	0,39	1,09
return gas temp	-23,3	-10	91,8	314	79,0	1,35	4,60	1,16	68,2	0,40	1,20
RGT= 32/90	-20	-4	109,3	373	94,0	1,46	5,00	1,26	74,6	0,43	1,43
liquid temp	-15	5	140,2	479	120,6	1,65	5,65	1,42	84,8	0,46	1,84
Tliq= 55/131	-5	23	222,3	759	191,3	2,07	7,09	1,79	107,1	0,55	2,93