

Model

Designation	HXD45AA	220-240V/50Hz ~	Sales code:	CDO00199
-------------	----------------	-----------------	-------------	-----------------

Compressor design

Oil type	Mineral	Refrigerant(s)	R600a
Oil viscosity	2,3cSt	Displacement	4,5cm ³ / 0,27cu.in
Oil quantity	77cm ³ / 2,6fl.oz	Compressors on pallet	168
Refr. charge - tech. limit	150g / 5,3oz		
Free gas volume comp.	837cm ³ / 28,3fl.oz		
Weight	3,8kg / 8,4lbs		
Motor protection	external		
Winding resistance main	53,3Ω (at 25°C)		
Winding resistance aux	26,7Ω (at 25°C)		
Max. winding temp.	120°C / 248°F		
Max. discharge temp.	120°C / 248°F		



General - Configurations with HXD45AA

	Conf. 1
Motorconfiguration	RSCR
Power supply (nominal)	220-240V/50Hz
Number of phases	1
Voltage range	187-264V
Approvals	VDE
Starting torque	LST
Note	Electrical equipment will be pre-assembled to compressor.

Applications with HXD45AA

	Conf. 1
Refrigerant	R600a
Application	LBP
System cooling	static
Hot gas defrost	-/-
Long interval pull down	-/-

Electrical data - Configurations with HXD45AA

	Conf. 1
Starting device type	PTC
Run capacitor	2μF
Start capacitor	-/-
LRA (locked rotor amps / 4s)	1,82A
RLA (rated load amps / 1s)	
Cut in current	4,58A
IP class	21

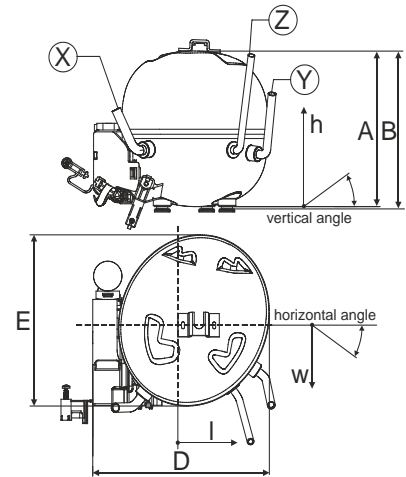
Model

Designation	HXD45AA	220-240V/50Hz ~	Sales code:	CDO00199
-------------	----------------	-----------------	-------------	-----------------

Compressor dimensions

Housing	A Height	133mm / 5,24in
	B Height	134,5mm / 5,3in
	C Length shell	135mm / 5,31in
	D Length w. cover	159mm / 6,26in
	E Width	147mm / 5,79in

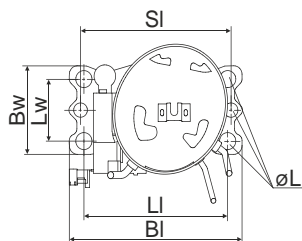
Connectors		Suction	Discharge	Process
		X	Y	Z
Diameter	[mm]	øi 6,1-6,3	øi 4,9-5,1	øo 5,92-6,08
	(i:inside, o:outside) [in]	øi 0,24-0,25	øi 0,19-0,2	øo 0,23-0,24
Material		copper	steel/CU	copper
Horizontal angle	±2°	0°	80°	74°
Vertical angle	±2°	79°	79°	72°
Position l/h/w	[mm]	-54/83/74	87/96/72	69/130/103
	[in]	-2,1/3,3/2,9	3,4/3,8/2,8	2,7/5,1/4,1
Straight tube l.	[mm]	14	14	14
	[in]	0,5	0,5	0,5



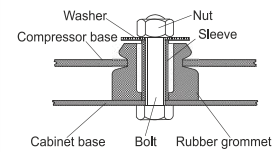
Compressor fixation

Adapter plate

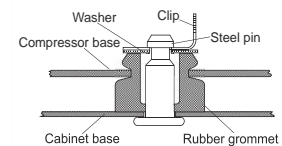
Bolt joint



Baseplate	[mm]	[inch]
BI	204	8.03
Bw	100	3.94
Large holes		
LI	170	6.7
LW	70	2.76
SI	178	7
øL	ø 16	ø 0.63



Snap-on



For standard mounting	one comp.	multi pack
Adapter plate	157008_	
Bolt joint M6 ø16mm	118-1917	118-1918
Bolt joint ø1/4" ø16mm	118-1946	
Snap-on ø7,3 ø16mm	118-1947	118-1919

Application notes

Various options of housing are possible (dip-tray fixture) - please contact SECOP-Sales.

Various options of connectors are possible - please contact SECOP-Sales.

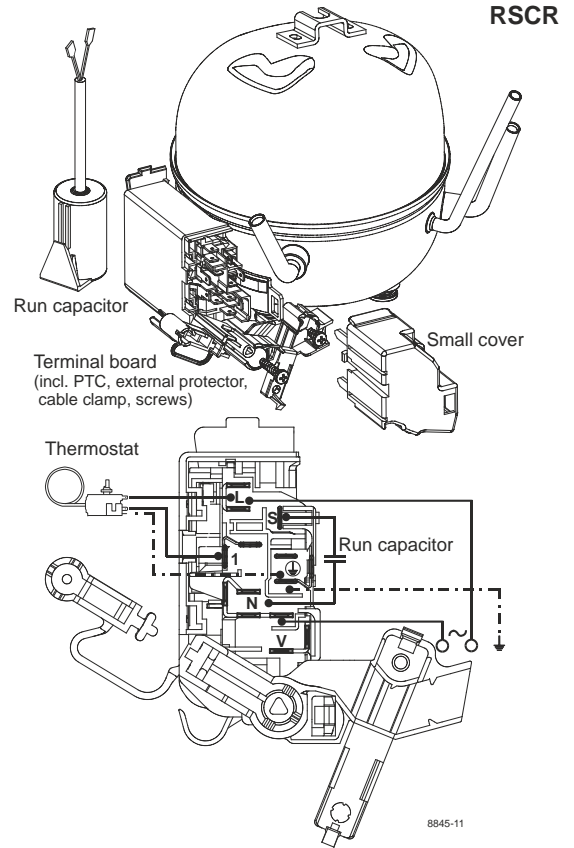
Model

Designation **HXD45AA** **220-240V/50Hz** Conf. 1 Sales code: **CDO00199**

Configuration

Motorconfiguration RSCR
 Power supply (nominal) 220-240V/50Hz 1~
 Refrigerant R600a
 Application LBP
 Voltage range 187-264V
 Starting torque LST
 Approvals VDE

Electrical accessories / wiring diagram

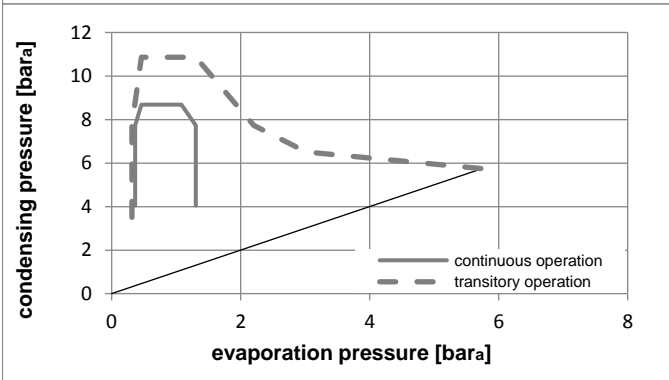
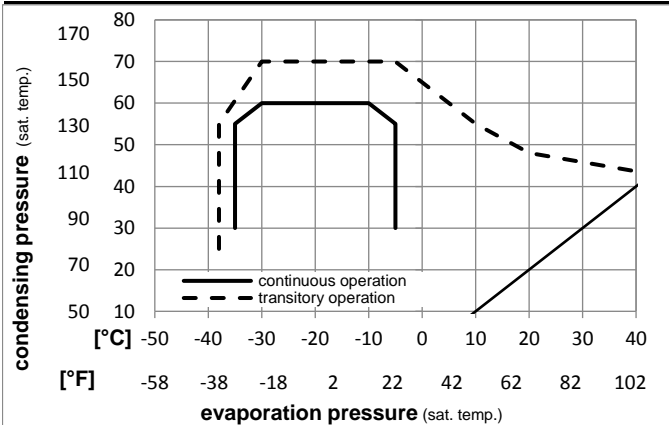


Ambient temperatures / system cooling

Ambient temperature min.: 10°C / 50°F
 Ambient temperature max.: 43°C / 110°F

System cooling (n/a: outside limits)			
T ambient	LBP	MBP	HBP
32°C / 90°F	static	n/a	n/a
38°C / 100°F	static	n/a	n/a
43°C / 110°F	static	n/a	n/a

Operation pressure range



Components (will be pre-assembled)

- terminal board (PTC, 4.8mm) **BN E6**
- motor protector BDG AE 88 AHM x **E6**
- run capacitor (2µF, 4.8mm) **cap. 2µF**
- cover terminal board **160943_**

Model

Designation **HXD45AA 220-240V/50Hz** Conf. 1 Sales code: **CDO00199**

Optimization + standard conditions

220V/50Hz, RSCR, static, VDE

	Evaporating pressure (saturation temperature)				Condensing pressure (saturation temperature)			Return gas temp.			Liquid temp.			Cooling capacity			COP			EER			Power consumption		Current consumption		Ref. mass flow
	pe	pc	RGT	Tliq	[W]	[Btu/h]	[kcal/h]	[W/W]	[Btu/WWh]	[kcal/Wh]	[W]	[A]	[kg/h]	P1	I	m	[W]	[A]	[kg/h]	[W]	[A]	[kg/h]	[W]	[A]	[kg/h]	[kg/h]	opt
[°C]	-23,3	45	32,2	32,2	93,3	318	80,3	2,00	6,83	1,72	46,6	0,22	1,00	46,6	0,22	1,00	opt										
[°F]	-9,94	113	90	90																							
[°C]	-23,3	54,4	32,2	32,2	85,2	291	73,3	1,75	5,99	1,51	48,6	0,23	0,91	48,6	0,23	0,91	ASHRAE LBP										
[°F]	-10	130	90	90																							
[°C]	-25	55	32	55	63,2	216	54,4	1,37	4,68	1,18	46,1	0,21	0,82	46,1	0,21	0,82	cecomaf LBP										
[°F]	-13	131	89,6	131																							
[°C]	-23,3	48,9	4,44	48,9	70,5	241	60,7	1,48	5,07	1,28	47,5	0,22	1,03	47,5	0,22	1,03	ARI540 LBP										
[°F]	-10	120	40	120																							
[°C]	-23,3	40,6	32,2	32,2	97,1	332	83,6	2,14	7,31	1,84	45,4	0,21	1,04	45,4	0,21	1,04	AHAM LBP										
[°F]	-10	105	90	90																							
[°C]	-35	45	32	45	40,3	138	34,7	1,33	4,55	1,15	30,3	0,14	0,48	30,3	0,14	0,48	opt										
[°F]	-31	113	89,6	113																							

Performance tables

220V/50Hz, RSCR, static, VDE

	pe	Cooling capacity			COP			EER			P1	I	m
	[°C]	[°F]	[W]	[Btu/h]	[kcal/h]	[W/W]	[Btu/WWh]	[kcal/Wh]	[W]	[A]	[kg/h]		
[°C / °F]	-35	-31	40,3	138	34,7	1,33	4,55	1,15	30,3	0,14	0,48		
cond. pressure	-30	-22	56,9	194	49,0	1,51	5,17	1,30	37,6	0,18	0,68		
pc= 45/113	-25	-13	76,5	261	65,9	1,72	5,89	1,48	44,4	0,21	0,91		
return gas temp.	-23,3	-10	84,1	287	72,3	1,80	6,16	1,55	46,6	0,22	1,00		
RGT= 32/90	-20	-4	100,1	342	86,1	1,97	6,72	1,69	50,8	0,24	1,19		
liquid temp	-15	5	128,5	439	110,6	2,25	7,68	1,93	57,2	0,26	1,54		
Tliq= 45/113	-5	23	203,5	695	175,1	2,90	9,89	2,49	70,3	0,32	2,44		
[°C / °F]	-35	-31	29,1	99	25,1	0,98	3,35	0,84	29,7	0,14	0,38		
cond. pressure	-30	-22	45,0	154	38,8	1,18	4,04	1,02	38,1	0,18	0,59		
pc= 55/131	-25	-13	63,2	216	54,4	1,37	4,68	1,18	46,1	0,21	0,82		
return gas temp	-23,3	-10	70,0	239	60,3	1,44	4,91	1,24	48,8	0,23	0,91		
RGT= 32/90	-20	-4	84,5	289	72,7	1,57	5,35	1,35	53,9	0,25	1,10		
liquid temp	-15	5	109,8	375	94,5	1,77	6,06	1,53	61,9	0,28	1,44		
Tliq= 55/131	-5	23	176,1	601	151,5	2,24	7,65	1,93	78,6	0,36	2,32		