

Model

Designation	HXD55AA	220-240V/50Hz ~	Sales code:	CDO00197
-------------	----------------	------------------------	-------------	-----------------

Compressor design

Oil type	Mineral	Refrigerant(s)	R600a
Oil viscosity	2,3cSt	Displacement	5,5cm ³ / 0,34cu.in
Oil quantity	77cm ³ / 2,6fl.oz	Compressors on pallet	168
Refr. charge - tech. limit	150g / 5,3oz		
Free gas volume comp.	837cm ³ / 28,3fl.oz		
Weight	3,8kg / 8,4lbs		
Motor protection	external		
Winding resistance main	46,7Ω (at 25°C)		
Winding resistance aux	34,1Ω (at 25°C)		
Max. winding temp.	120°C / 248°F		
Max. discharge temp.	120°C / 248°F		



General - Configurations with HXD55AA

	Conf. 1
Motorconfiguration	RSCR
Power supply (nominal)	220-240V/50Hz
Number of phases	1
Voltage range	187-264V
Approvals	VDE
Starting torque	LST
Note	Electrical equipment will be pre-assembled to compressor.

Applications with HXD55AA

	Conf. 1
Refrigerant	R600a
Application	LBP
System cooling	static
Hot gas defrost	-/-
Long interval pull down	-/-

Electrical data - Configurations with HXD55AA

	Conf. 1
Starting device type	PTC
Run capacitor	2μF
Start capacitor	-/-
LRA (locked rotor amps / 4s)	2,01A
RLA (rated load amps / 1s)	
Cut in current	4,45A
IP class	21

Model

Designation

HXD55AA

220-240V/50Hz ~

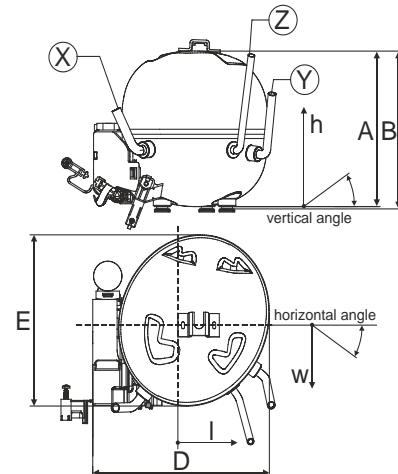
Sales code:

CDO00197

Compressor dimensions

Housing	A Height	133mm / 5,24in
	B Height	134,5mm / 5,3in
	C Length shell	135mm / 5,31in
	D Length w. cover	159mm / 6,26in
	E Width	147mm / 5,79in

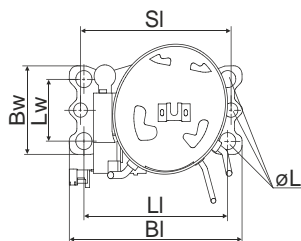
Connectors		Suction	Discharge	Process
		X	Y	Z
Diameter	[mm]	øi 6,1-6,3	øi 4,9-5,1	øo 5,92-6,08
	(i:inside, o:outside) [in]	øi 0,24-0,25	øi 0,19-0,2	øo 0,23-0,24
Material		copper	steel/CU	copper
Horizontal angle	±2°	0°	80°	74°
Vertical angle	±2°	79°	79°	72°
Position l/h/w	[mm]	-54/83/74	87/96/72	69/130/103
	[in]	-2,1/3,3/2,9	3,4/3,8/2,8	2,7/5,1/4,1
Straight tube l.	[mm]	14	14	14
	[in]	0,5	0,5	0,5



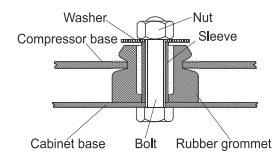
Compressor fixation

Adapter plate

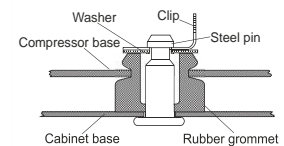
Bolt joint



Baseplate	[mm]	[inch]
BI	204	8.03
Bw	100	3.94
Large holes	[mm]	[inch]
LI	170	6.7
LW	70	2.76
SI	178	7
øL	ø 16	ø 0.63



Snap-on



For standard mounting	one comp.	multi pack
Adapter plate	157008_	
Bolt joint M6 ø16mm	118-1917	118-1918
Bolt joint ø1/4" ø16mm	118-1946	
Snap-on ø7,3 ø16mm	118-1947	118-1919

Application notes

Various options of housing are possible (dip-tray fixture) - please contact SECOP-Sales.

Various options of connectors are possible - please contact SECOP-Sales.

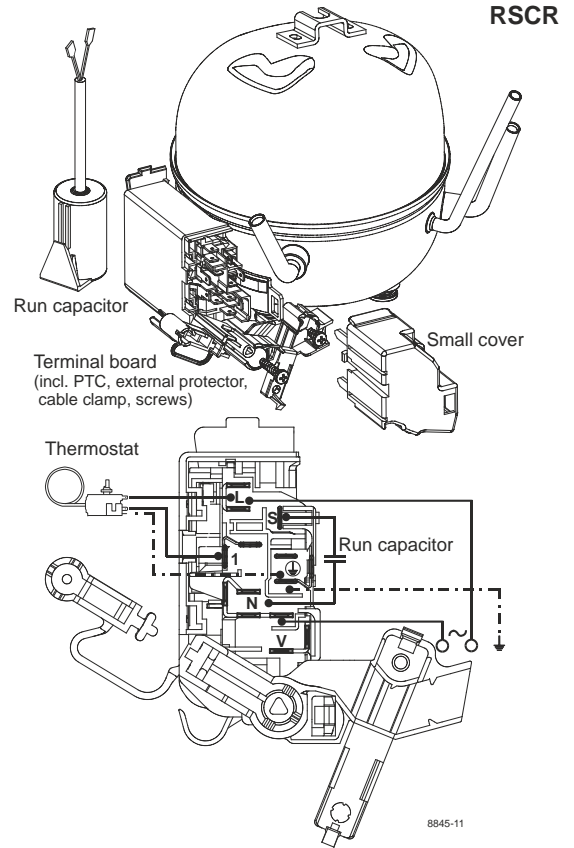
Model

Designation **HXD55AA** **220-240V/50Hz** Conf. 1 Sales code: **CDO00197**

Configuration

Motorconfiguration RSCR
 Power supply (nominal) 220-240V/50Hz 1~
 Refrigerant R600a
 Application LBP
 Voltage range 187-264V
 Starting torque LST
 Approvals VDE

Electrical accessories / wiring diagram

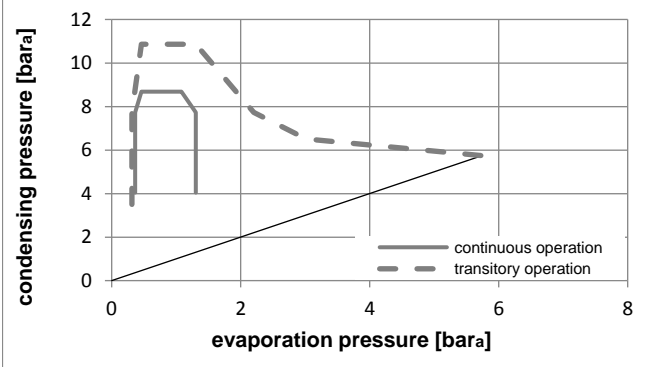
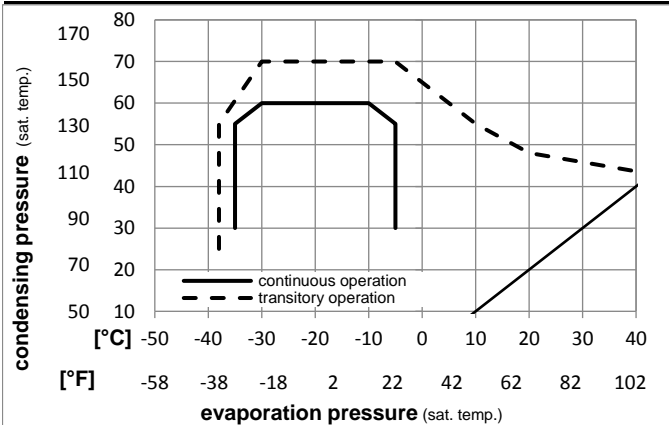


Ambient temperatures / system cooling

Ambient temperature min.: 10°C / 50°F
 Ambient temperature max.: 43°C / 110°F

System cooling (n/a: outside limits)			
T ambient	LBP	MBP	HBP
32°C / 90°F	static	n/a	n/a
38°C / 100°F	static	n/a	n/a
43°C / 110°F	static	n/a	n/a

Operation pressure range



Components (will be pre-assembled)

- terminal board (PTC, 4.8mm) BN E6
- motor protector BDG AE 88 AHM x E6
- run capacitor (2µF, 4.8mm) cap. 2µF
- cover terminal board 160943_

Model

Designation **HXD55AA 220-240V/50Hz** Conf. 1 Sales code: **CDO00197**

Optimization + standard conditions

220V/50Hz, RSCR, static, VDE

	Evaporating pressure (saturation temperature)				Condensing pressure (saturation temperature)						Power consumption				Ref. mass flow
	pe	pc	RGT	Tliq	Cooling capacity			COP	EER			P1	I	m	
	[°C]	[°F]	[°C]	[°C]	[W]	[Btu/h]	[kcal/h]	[W/W]	[Btu/Wh]	[kcal/Wh]	[W]	[A]	[kg/h]		
	-23,3	45	32,2	32,2	105,3	359	90,6	1,95	6,66	1,68	53,9	0,25	1,13	opt	
	-9,94	113	90	90											
	-23,3	54,4	32,2	32,2	96,0	328	82,6	1,72	5,87	1,48	55,8	0,26	1,03	ASHRAE LBP	
	-10	130	90	90											
	-25	55	32	55	71,9	245	61,8	1,35	4,61	1,16	53,2	0,25	0,94	cecomaf LBP	
	-13	131	89,6	131											
	-23,3	48,9	4,44	48,9	79,5	272	68,4	1,45	4,95	1,25	54,9	0,26	1,16	ARI540 LBP	
	-10	120	40	120											
	-23,3	40,6	32,2	32,2	108,8	372	93,6	2,09	7,13	1,80	52,1	0,24	1,17	AHAM LBP	
	-10	105	90	90											
	-35	45	32	45	51,4	175	44,2	1,35	4,60	1,16	38,2	0,18	0,61	opt	
	-31	113	89,6	113											

Performance tables

220V/50Hz, RSCR, static, VDE

	pe	Cooling capacity			COP	EER			P1	I	m
	[°C]	[°F]	[W]	[Btu/h]	[kcal/h]	[W/W]	[Btu/Wh]	[kcal/Wh]	[W]	[A]	[kg/h]
[°C / °F]	-35	-31	51,4	175	44,2	1,35	4,60	1,16	38,2	0,18	0,61
cond. pressure	-30	-22	67,6	231	58,2	1,50	5,11	1,29	45,1	0,21	0,80
pc= 45/113	-25	-13	87,2	298	75,1	1,69	5,76	1,45	51,7	0,24	1,04
return gas temp.	-23,3	-10	94,9	324	81,7	1,76	6,01	1,51	53,9	0,25	1,13
RGT= 32/90	-20	-4	111,3	380	95,8	1,91	6,54	1,65	58,2	0,27	1,33
liquid temp	-15	5	140,9	481	121,2	2,18	7,44	1,88	64,6	0,30	1,68
Tliq= 45/113	-5	23	220,1	752	189,4	2,80	9,58	2,41	78,5	0,36	2,64
[°C / °F]	-35	-31	37,9	129	32,6	1,02	3,47	0,88	37,2	0,18	0,49
cond. pressure	-30	-22	53,5	183	46,0	1,18	4,04	1,02	45,3	0,21	0,70
pc= 55/131	-25	-13	71,9	245	61,8	1,35	4,61	1,16	53,2	0,25	0,94
return gas temp	-23,3	-10	78,9	269	67,9	1,41	4,82	1,21	55,9	0,26	1,03
RGT= 32/90	-20	-4	93,9	321	80,8	1,53	5,24	1,32	61,3	0,28	1,23
liquid temp	-15	5	120,7	412	103,9	1,73	5,92	1,49	69,7	0,32	1,58
Tliq= 55/131	-5	23	192,2	656	165,4	2,18	7,44	1,87	88,3	0,41	2,53