

Model

Designation	HZD45AA	220-240V/50Hz ~	Sales code:	CDO00200
-------------	----------------	-----------------	-------------	-----------------

Compressor design

Oil type	Mineral	Refrigerant(s)	R600a
Oil viscosity	2,3cSt	Displacement	4,5cm ³ / 0,27cu.in
Oil quantity	77cm ³ / 2,6fl.oz	Compressors on pallet	168
Refr. charge - tech. limit	150g / 5,3oz		
Free gas volume comp.	837cm ³ / 28,3fl.oz		
Weight	3,8kg / 8,4lbs		
Motor protection	external		
Winding resistance main	50,7Ω (at 25°C)		
Winding resistance aux	49Ω (at 25°C)		
Max. winding temp.	120°C / 248°F		
Max. discharge temp.	120°C / 248°F		



General - Configurations with HZD45AA

	Conf. 1
Motorconfiguration	RSCR
Power supply (nominal)	220-240V/50Hz
Number of phases	1
Voltage range	187-264V
Approvals	VDE
Starting torque	LST
Note	Electrical equipment will be pre-assembled to compressor.

Applications with HZD45AA

	Conf. 1
Refrigerant	R600a
Application	LBP
System cooling	static
Hot gas defrost	-/-
Long interval pull down	-/-

Electrical data - Configurations with HZD45AA

	Conf. 1
Starting device type	PTC
Run capacitor	2μF
Start capacitor	-/-
LRA (locked rotor amps / 4s)	1,37A
RLA (rated load amps / 1s)	
Cut in current	3,51A
IP class	21

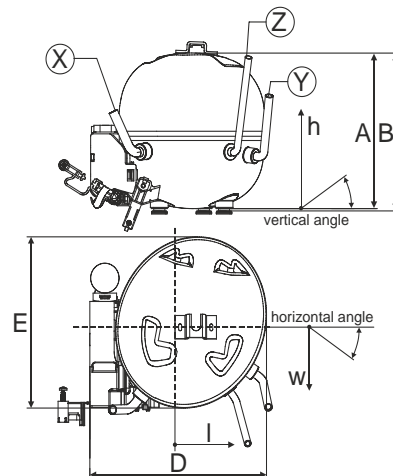
Model

Designation	HZD45AA	220-240V/50Hz ~	Sales code:	CDO00200
-------------	----------------	-----------------	-------------	-----------------

Compressor dimensions

Housing	A Height	133mm / 5,24in
	B Height	134,5mm / 5,3in
	C Length shell	135mm / 5,31in
	D Length w. cover	159mm / 6,26in
	E Width	147mm / 5,79in

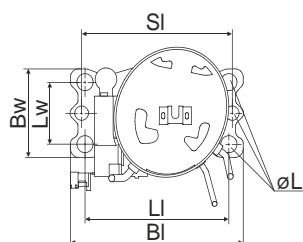
Connectors		Suction	Discharge	Process
		X	Y	Z
Diameter	[mm]	øi 6,1-6,3	øi 4,9-5,1	øo 5,92-6,08
	(i:inside, o:outside) [in]	øi 0,24-0,25	øi 0,19-0,2	øo 0,23-0,24
Material		copper	steel/CU	copper
Horizontal angle	±2°	0°	80°	74°
Vertical angle	±2°	79°	79°	72°
Position l/h/w	[mm]	-54/83/74	87/96/72	69/130/103
	[in]	-2,1/3,3/2,9	3,4/3,8/2,8	2,7/5,1/4,1
Straight tube l.	[mm]	14	14	14
	[in]	0,5	0,5	0,5



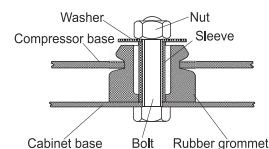
Compressor fixation

Adapter plate

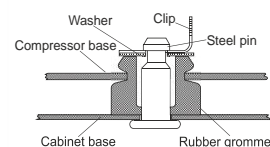
Bolt joint



Baseplate	[mm]	[inch]
BI	204	8.03
Bw	100	3.94
Large holes		
LI	170	6.7
Lw	70	2.76
SI	178	7
øL	ø 16	ø 0.63



Snap-on



For standard mounting	one comp.	multi pack
Adapter plate	157008_	
Bolt joint M6 ø16mm	118-1917	118-1918
Bolt joint ø1/4" ø16mm	118-1946	
Snap-on ø7,3 ø16mm	118-1947	118-1919

Application notes

Various options of housing are possible (dip-tray fixture) - please contact SECOP-Sales.

Various options of connectors are possible - please contact SECOP-Sales.

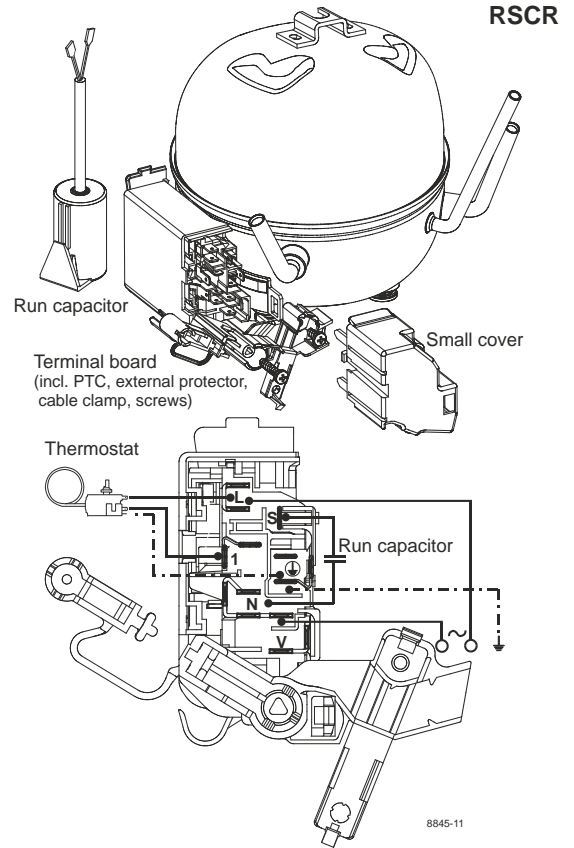
Model

Designation **HZD45AA** **220-240V/50Hz** Conf. 1 Sales code: **CDO00200**

Configuration

Motorconfiguration RSCR
 Power supply (nominal) 220-240V/50Hz 1~
 Refrigerant R600a
 Application LBP
 Voltage range 187-264V
 Starting torque LST
 Approvals VDE

Electrical accessories / wiring diagram

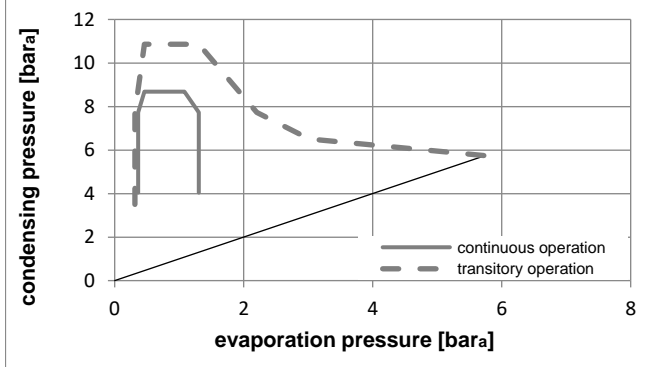
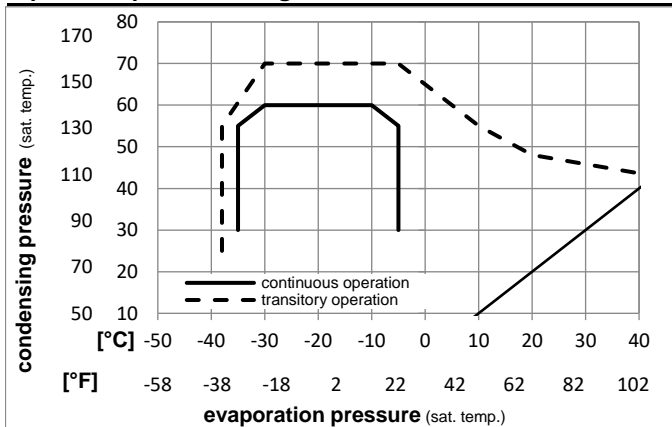


Ambient temperatures / system cooling

Ambient temperature min.: 10°C / 50°F
 Ambient temperature max.: 43°C / 110°F

System cooling (n/a: outside limits)			
T ambient	LBP	MBP	HBP
32°C / 90°F	static	n/a	n/a
38°C / 100°F	static	n/a	n/a
43°C / 110°F	static	n/a	n/a

Operation pressure range



Components (will be pre-assembled)

- terminal board (PTC, 4.8mm) BN E6
- motor protector BDG AE 88 AHM x E6
- run capacitor (2µF, 4.8mm) cap. 2µF
- cover terminal board 160943_

Model

Designation **HZD45AA 220-240V/50Hz** Conf. 1 Sales code: **CDO00200**

Optimization + standard conditions

220V/50Hz, RSCR, static, VDE

	Evaporating pressure (saturation temperature)				Condensing pressure (saturation temperature)			Return gas temp.			Liquid temp.		Cooling capacity			COP		EER		Power consumption		Current consumption		Ref. mass flow		
	pe	pc	RGT	Tliq	[W]	[Btu/h]	[kcal/h]	[W/W]	[Btu/W/h]	[kcal/Wh]	[W]	[A]	[kg/h]	P1	I	m										
[°C]	-23,3	45	32,2	32,2	93,0	318	80,0	2,07	7,07	1,78	44,9	0,20	1,00												opt	
[°F]	-9,94	113	90	90																						
[°C]	-23,3	54,4	32,2	32,2	88,1	301	75,8	1,85	6,30	1,59	47,7	0,21	0,95												ASHRAE LBP	
[°F]	-10	130	90	90																						
[°C]	-25	55	32	55	65,8	225	56,7	1,45	4,94	1,24	45,5	0,20	0,86												cecomaf LBP	
[°F]	-13	131	89,6	131																						
[°C]	-23,3	48,9	4,44	48,9	71,7	245	61,7	1,55	5,29	1,33	46,2	0,21	1,05												ARI540 LBP	
[°F]	-10	120	40	120																						
[°C]	-23,3	40,6	32,2	32,2	95,0	324	81,7	2,20	7,50	1,89	43,2	0,19	1,02												AHAM LBP	
[°F]	-10	105	90	90																						
[°C]	-35	45	32	45	42,3	144	36,4	1,37	4,67	1,18	30,9	0,14	0,50												opt	
[°F]	-31	113	89,6	113																						

Performance tables

220V/50Hz, RSCR, static, VDE

	pe	Cooling capacity			COP		EER		P1	I	m
	[°C]	[°F]	[W]	[Btu/h]	[kcal/h]	[W/W]	[Btu/W/h]	[kcal/Wh]	[W]	[A]	[kg/h]
[°C / °F]	-35	-31	42,3	144	36,4	1,37	4,67	1,18	30,9	0,14	0,50
cond. pressure	-30	-22	57,8	197	49,7	1,55	5,30	1,34	37,2	0,17	0,69
pc= 45/113	-25	-13	76,6	262	65,9	1,78	6,08	1,53	43,0	0,19	0,91
return gas temp.	-23,3	-10	83,8	286	72,2	1,87	6,37	1,61	44,9	0,20	1,00
RGT= 32/90	-20	-4	99,2	339	85,3	2,04	6,97	1,76	48,6	0,22	1,18
liquid temp	-15	5	125,9	430	108,3	2,32	7,93	2,00	54,2	0,24	1,50
Tliq= 45/113	-5	23	193,4	661	166,5	2,92	9,96	2,51	66,3	0,30	2,32
[°C / °F]	-35	-31	34,5	118	29,7	1,11	3,79	0,96	31,1	0,14	0,45
cond. pressure	-30	-22	48,7	166	41,9	1,27	4,32	1,09	38,5	0,17	0,63
pc= 55/131	-25	-13	65,8	225	56,7	1,45	4,94	1,24	45,5	0,20	0,86
return gas temp	-23,3	-10	72,4	247	62,3	1,51	5,16	1,30	47,9	0,22	0,94
RGT= 32/90	-20	-4	86,3	295	74,3	1,64	5,61	1,41	52,5	0,24	1,13
liquid temp	-15	5	110,6	378	95,2	1,85	6,33	1,59	59,7	0,27	1,45
Tliq= 55/131	-5	23	172,2	588	148,2	2,28	7,77	1,96	75,7	0,34	2,27