

Model

Designation	HZD55AA	220-240V/50Hz ~	Sales code:	CDO00201
-------------	----------------	-----------------	-------------	-----------------

Compressor design

Oil type	Mineral	Refrigerant(s)	R600a
Oil viscosity	2,3cSt	Displacement	5,5cm ³ / 0,34cu.in
Oil quantity	77cm ³ / 2,6fl.oz	Compressors on pallet	168
Refr. charge - tech. limit	150g / 5,3oz		
Free gas volume comp.	837cm ³ / 28,3fl.oz		
Weight	3,9kg / 8,6lbs		
Motor protection	external		
Winding resistance main	48,2Ω (at 25°C)		
Winding resistance aux	42,7Ω (at 25°C)		
Max. winding temp.	120°C / 248°F		
Max. discharge temp.	120°C / 248°F		



General - Configurations with HZD55AA

	Conf. 1
Motorconfiguration	RSCR
Power supply (nominal)	220-240V/50Hz
Number of phases	1
Voltage range	187-264V
Approvals	VDE
Starting torque	LST
Note	Electrical equipment will be pre-assembled to compressor.

Applications with HZD55AA

	Conf. 1
Refrigerant	R600a
Application	LBP
System cooling	static
Hot gas defrost	-/-
Long interval pull down	-/-

Electrical data - Configurations with HZD55AA

	Conf. 1
Starting device type	PTC
Run capacitor	2μF
Start capacitor	-/-
LRA (locked rotor amps / 4s)	1,89A
RLA (rated load amps / 1s)	
Cut in current	3,91A
IP class	21

Model

Designation

HZD55AA

220-240V/50Hz ~

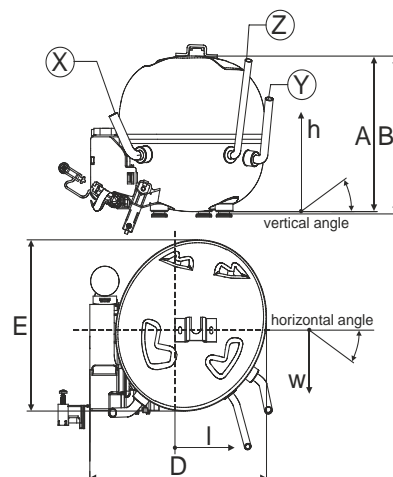
Sales code:

CDO00201

Compressor dimensions

Housing	A Height	133mm / 5,24in
	B Height	134,5mm / 5,3in
	C Length shell	135mm / 5,31in
	D Length w. cover	159mm / 6,26in
	E Width	147mm / 5,79in

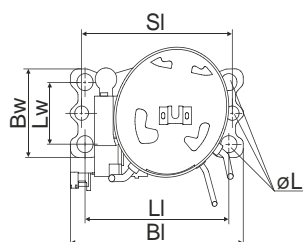
Connectors		Suction	Discharge	Process
		X	Y	Z
Diameter	[mm]	øi 6,1-6,3	øi 4,9-5,1	øo 5,92-6,08
(i:inside, o:outside)	[in]	øi 0,24-0,25	øi 0,19-0,2	øo 0,23-0,24
Material		copper	steel/CU	copper
Horizontal angle	±2°	0°	80°	74°
Vertical angle	±2°	79°	79°	72°
Position l/h/w	[mm]	-54/83/74	87/96/72	69/130/103
	[in]	-2,1/3,3/2,9	3,4/3,8/2,8	2,7/5,1/4,1
Straight tube l.	[mm]	14	14	14
	[in]	0,5	0,5	0,5



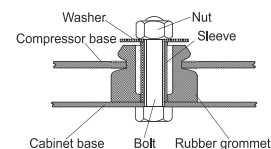
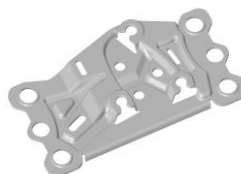
Compressor fixation

Adapter plate

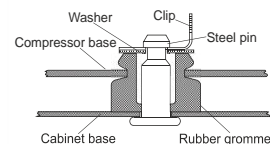
Bolt joint



Baseplate	[mm]	[inch]
BI	204	8.03
Bw	100	3.94
Large holes	[mm]	[inch]
LI	170	6.7
Lw	70	2.76
SI	178	7
øL	ø 16	ø 0.63



Snap-on



For standard mounting	one comp.	multi pack
Adapter plate	157008_	
Bolt joint M6 ø16mm	118-1917	118-1918
Bolt joint ø1/4" ø16mm	118-1946	
Snap-on ø7,3 ø16mm	118-1947	118-1919

Application notes

Various options of housing are possible (dip-tray fixture) - please contact SECOP-Sales.

Various options of connectors are possible - please contact SECOP-Sales.

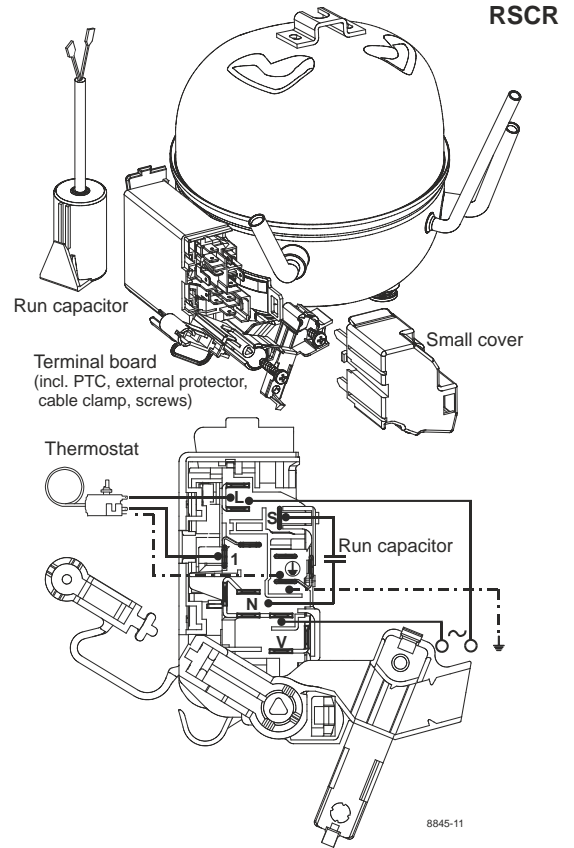
Model

Designation **HZD55AA** **220-240V/50Hz** Conf. 1 Sales code: **CDO00201**

Configuration

Motorconfiguration RSCR
 Power supply (nominal) 220-240V/50Hz 1~
 Refrigerant R600a
 Application LBP
 Voltage range 187-264V
 Starting torque LST
 Approvals VDE

Electrical accessories / wiring diagram

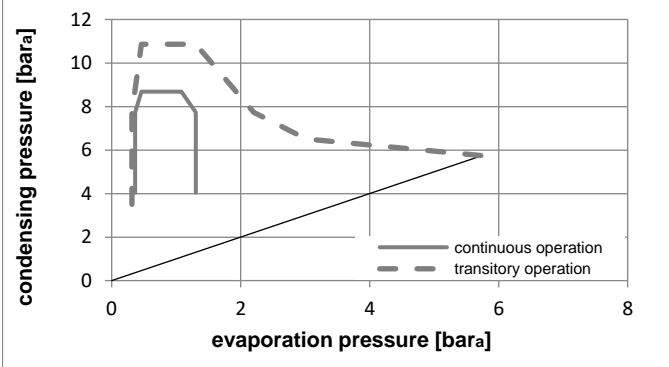
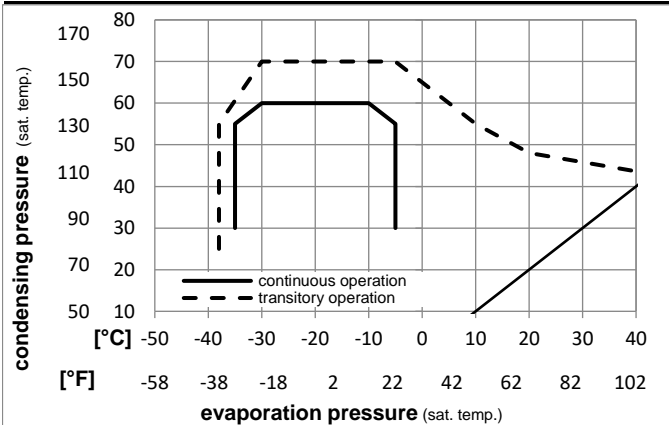


Ambient temperatures / system cooling

Ambient temperature min.: 10°C / 50°F
 Ambient temperature max.: 43°C / 110°F

System cooling (n/a: outside limits)			
T ambient	LBP	MBP	HBP
32°C / 90°F	static	n/a	n/a
38°C / 100°F	static	n/a	n/a
43°C / 110°F	static	n/a	n/a

Operation pressure range



Components (will be pre-assembled)

- terminal board (PTC,4.8mm) BN E6
- motor protector BDG AE 88 AHM x E6
- run capacitor (2µF, 4.8mm) cap. 2µF
- cover terminal board 160943_

Model

Designation **HZD55AA 220-240V/50Hz** Conf. 1 Sales code: **CDO00201**

Optimization + standard conditions

220V/50Hz, RSCR, static, VDE

	Evaporating pressure (saturation temperature)				Condensing pressure (saturation temperature)			Return gas temp.			Liquid temp.			Cooling capacity			COP		EER		Power consumption		Current consumption		Ref. mass flow	
	pe	pc	RGT	Tliq	[W]	[Btu/h]	[kcal/h]	[W/W]	[Btu/W/h]	[kcal/Wh]	[W]	[A]	[kg/h]	P1	I	m										
[°C]	-23,3	45	32,2	32,2	105,0	359	90,4	2,05	7,00	1,76	51,2	0,23	1,13													opt
[°F]	-9,94	113	90	90																						
[°C]	-23,3	54,4	32,2	32,2	100,0	342	86,1	1,83	6,25	1,58	54,6	0,25	1,07													ASHRAE LBP
[°F]	-10	130	90	90																						
[°C]	-25	55	32	55	75,0	256	64,5	1,44	4,91	1,24	52,2	0,24	0,98													cecomaf LBP
[°F]	-13	131	89,6	131																						
[°C]	-23,3	48,9	4,44	48,9	81,1	277	69,8	1,54	5,25	1,32	52,8	0,24	1,18													ARI540 LBP
[°F]	-10	120	40	120																						
[°C]	-23,3	40,6	32,2	32,2	107,0	365	92,1	2,17	7,43	1,87	49,2	0,22	1,15													AHAM LBP
[°F]	-10	105	90	90																						
[°C]	-35	45	32	45	48,5	166	41,8	1,36	4,65	1,17	35,7	0,16	0,58													opt
[°F]	-31	113	89,6	113																						

Performance tables

220V/50Hz, RSCR, static, VDE

	pe	Cooling capacity			COP			EER			P1	I	m
	[°C]	[°F]	[W]	[Btu/h]	[kcal/h]	[W/W]	[Btu/W/h]	[kcal/Wh]	[W]	[A]	[kg/h]		
[°C / °F]	-35	-31	48,5	166	41,8	1,36	4,65	1,17	35,7	0,16	0,58		
cond. pressure	-30	-22	65,8	225	56,6	1,54	5,27	1,33	42,6	0,19	0,78		
pc= 45/113	-25	-13	86,6	296	74,6	1,77	6,03	1,52	49,1	0,22	1,03		
return gas temp.	-23,3	-10	94,6	323	81,5	1,85	6,31	1,59	51,2	0,23	1,13		
RGT= 32/90	-20	-4	111,6	381	96,0	2,02	6,90	1,74	55,3	0,25	1,33		
liquid temp	-15	5	141,2	482	121,5	2,30	7,84	1,98	61,5	0,28	1,69		
Tliq= 45/113	-5	23	216,2	738	186,0	2,89	9,86	2,48	74,9	0,34	2,59		
[°C / °F]	-35	-31	40,2	137	34,6	1,11	3,78	0,95	36,3	0,16	0,52		
cond. pressure	-30	-22	56,0	191	48,2	1,26	4,31	1,09	44,4	0,20	0,73		
pc= 55/131	-25	-13	75,0	256	64,5	1,44	4,91	1,24	52,2	0,24	0,98		
return gas temp	-23,3	-10	82,3	281	70,8	1,50	5,12	1,29	54,8	0,25	1,07		
RGT= 32/90	-20	-4	97,7	334	84,1	1,63	5,56	1,40	60,0	0,27	1,28		
liquid temp	-15	5	124,6	425	107,2	1,83	6,26	1,58	68,0	0,31	1,63		
Tliq= 55/131	-5	23	193,0	659	166,1	2,25	7,70	1,94	85,6	0,39	2,54		