

Model

Designation	HZD60AA	220-240V/50Hz ~	Sales code:	CDO00202
-------------	----------------	------------------------	-------------	-----------------

Compressor design

Oil type	Mineral	Refrigerant(s)	R600a
Oil viscosity	2,3cSt	Displacement	6cm ³ / 0,37cu.in
Oil quantity	77cm ³ / 2,6fl.oz	Compressors on pallet	168
Refr. charge - tech. limit	150g / 5,3oz		
Free gas volume comp.	837cm ³ / 28,3fl.oz		
Weight	3,9kg / 8,6lbs		
Motor protection	external		
Winding resistance main	40,7Ω (at 25°C)		
Winding resistance aux	55,1Ω (at 25°C)		
Max. winding temp.	120°C / 248°F		
Max. discharge temp.	120°C / 248°F		



General - Configurations with HZD60AA

	Conf. 1
Motorconfiguration	RSCR
Power supply (nominal)	220-240V/50Hz
Number of phases	1
Voltage range	187-264V
Approvals	VDE
Starting torque	LST
Note	Electrical equipment will be pre-assembled to compressor.

Applications with HZD60AA

	Conf. 1
Refrigerant	R600a
Application	LBP
System cooling	static
Hot gas defrost	-/-
Long interval pull down	-/-

Electrical data - Configurations with HZD60AA

	Conf. 1
Starting device type	PTC
Run capacitor	2μF
Start capacitor	-/-
LRA (locked rotor amps / 4s)	2,23A
RLA (rated load amps / 1s)	
Cut in current	3,86A
IP class	21

Model

Designation

HZD60AA

220-240V/50Hz ~

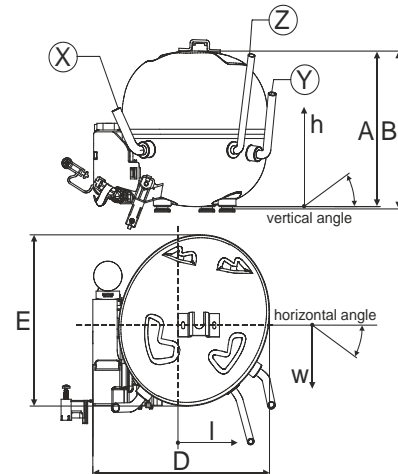
Sales code:

CDO00202

Compressor dimensions

Housing	A Height	133mm / 5,24in
	B Height	134,5mm / 5,3in
	C Length shell	135mm / 5,31in
	D Length w. cover	159mm / 6,26in
	E Width	147mm / 5,79in

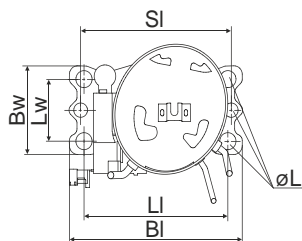
Connectors		Suction	Discharge	Process
		X	Y	Z
Diameter	[mm]	øi 6,1-6,3	øi 4,9-5,1	øo 5,92-6,08
(i:inside, o:outside)	[in]	øi 0,24-0,25	øi 0,19-0,2	øo 0,23-0,24
Material		copper	steel/CU	copper
Horizontal angle	±2°	0°	80°	74°
Vertical angle	±2°	79°	79°	72°
Position l/h/w	[mm]	-54/83/74	87/96/72	69/130/103
	[in]	-2,1/3,3/2,9	3,4/3,8/2,8	2,7/5,1/4,1
Straight tube l.	[mm]	14	14	14
	[in]	0,5	0,5	0,5



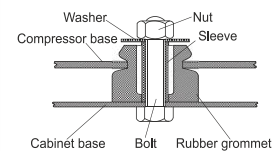
Compressor fixation

Adapter plate

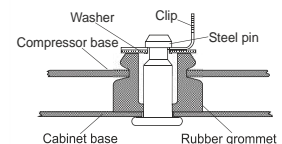
Bolt joint



Baseplate	[mm]	[inch]
BI	204	8.03
Bw	100	3.94
Large holes	[mm]	[inch]
LI	170	6.7
Lw	70	2.76
SI	178	7
øL	ø 16	ø 0.63



Snap-on



For standard mounting	one comp.	multi pack
Adapter plate	157008_	
Bolt joint M6 ø16mm	118-1917	118-1918
Bolt joint ø1/4" ø16mm	118-1946	
Snap-on ø7,3 ø16mm	118-1947	118-1919

Application notes

Various options of housing are possible (dip-tray fixture) - please contact SECOP-Sales.

Various options of connectors are possible - please contact SECOP-Sales.

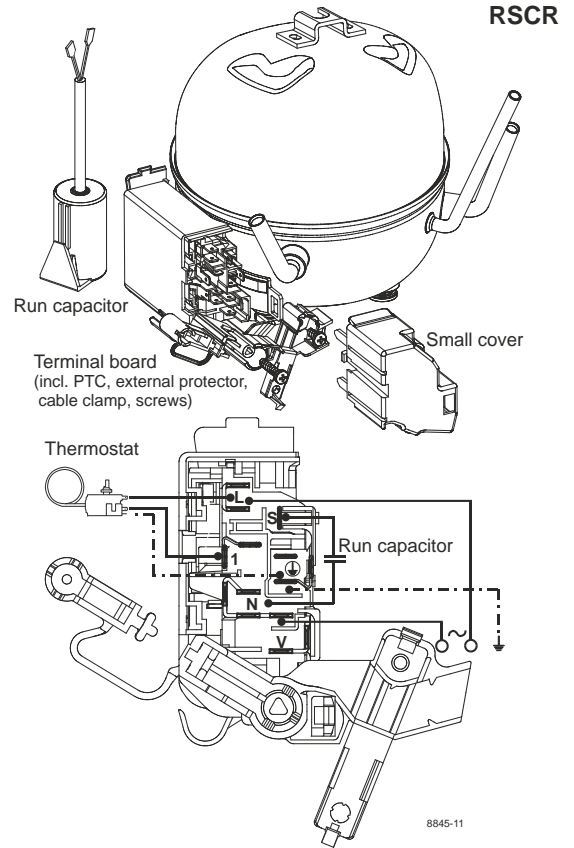
Model

Designation **HZD60AA** **220-240V/50Hz** Conf. 1 Sales code: **CDO00202**

Configuration

Motorconfiguration **RSCR**
 Power supply (nominal) **220-240V/50Hz 1~**
 Refrigerant **R600a**
 Application **LBP**
 Voltage range **187-264V**
 Starting torque **LST**
 Approvals **VDE**

Electrical accessories / wiring diagram

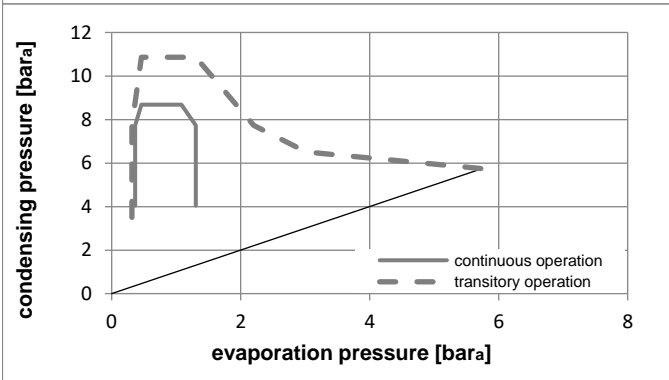
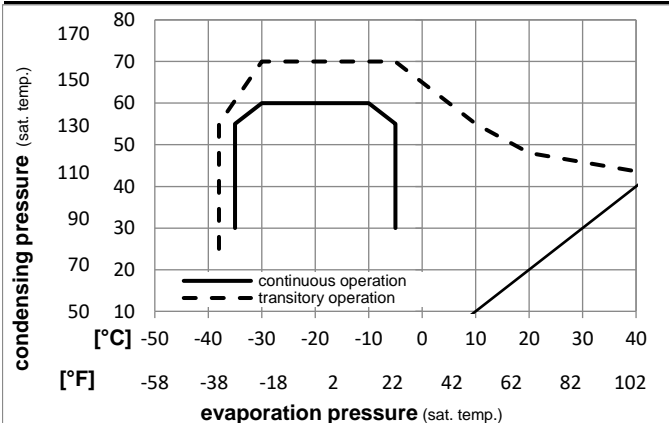


Ambient temperatures / system cooling

Ambient temperature min.: **10°C / 50°F**
 Ambient temperature max.: **43°C / 110°F**

System cooling (n/a: outside limits)			
T ambient	LBP	MBP	HBP
32°C / 90°F	static	n/a	n/a
38°C / 100°F	static	n/a	n/a
43°C / 110°F	static	n/a	n/a

Operation pressure range



Components (will be pre-assembled)

- terminal board (PTC,4.8mm) BN E6
- motor protector BDG AE 88 AHM x E6
- run capacitor (2µF, 4.8mm) cap. 2µF
- cover terminal board 160943_

Model

Designation **HZD60AA 220-240V/50Hz** Conf. 1 Sales code: **CDO00202**

Optimization + standard conditions

220V/50Hz, RSCR, static, VDE

	Evaporating pressure (saturation temperature)				Condensing pressure (saturation temperature)			Return gas temp.			Liquid temp.			Cooling capacity			COP	EER	Power consumption		Ref. mass flow
	pe	pc	RGT	Tliq	[W]	[Btu/h]	[kcal/h]	[W/W]	[Btu/Wh]	[kcal/Wh]	P1	I	m	[W]	[A]	[kg/h]					
[°C]	-23,3	45	32,2	32,2	120,0	410	103,3	2,03	6,93	1,75	59,1	0,27	1,29			opt					
[°F]	-9,94	113	90	90																	
[°C]	-23,3	54,4	32,2	32,2	115,0	393	99,0	1,81	6,19	1,56	63,4	0,29	1,23			ASHRAE LBP					
[°F]	-10	130	90	90																	
[°C]	-25	55	32	55	86,6	296	74,5	1,42	4,86	1,22	60,9	0,28	1,13			cecomaf LBP					
[°F]	-13	131	89,6	131																	
[°C]	-23,3	48,9	4,44	48,9	92,8	317	79,9	1,52	5,20	1,31	61,0	0,28	1,36			ARI540 LBP					
[°F]	-10	120	40	120																	
[°C]	-23,3	40,6	32,2	32,2	122,1	417	105,1	2,15	7,35	1,85	56,7	0,26	1,31			AHAM LBP					
[°F]	-10	105	90	90																	
[°C]	-35	45	32	45	54,4	186	46,8	1,38	4,72	1,19	39,4	0,20	0,65			opt					
[°F]	-31	113	89,6	113																	

Performance tables

220V/50Hz, RSCR, static, VDE

	pe	Cooling capacity			COP			EER			P1	I	m
	[°C]	[°F]	[W]	[Btu/h]	[kcal/h]	[W/W]	[Btu/Wh]	[kcal/Wh]	[W]	[A]	[kg/h]		
[°C / °F]	-35	-31	54,4	186	46,8	1,38	4,72	1,19	39,4	0,20	0,65		
cond. pressure	-30	-22	75,8	259	65,2	1,53	5,24	1,32	49,4	0,23	0,90		
pc= 45/113	-25	-13	99,4	339	85,5	1,75	5,97	1,50	56,9	0,26	1,18		
return gas temp.	-23,3	-10	108,2	369	93,1	1,83	6,25	1,58	59,1	0,27	1,29		
RGT= 32/90	-20	-4	126,7	433	109,1	2,00	6,85	1,73	63,2	0,29	1,51		
liquid temp	-15	5	159,5	545	137,3	2,28	7,80	1,97	69,8	0,32	1,91		
Tliq= 45/113	-5	23	247,7	846	213,1	2,77	9,47	2,39	89,3	0,40	2,97		
[°C / °F]	-35	-31	45,4	155	39,0	1,12	3,82	0,96	40,5	0,20	0,59		
cond. pressure	-30	-22	65,1	222	56,1	1,26	4,29	1,08	51,8	0,24	0,85		
pc= 55/131	-25	-13	86,6	296	74,5	1,42	4,86	1,22	60,9	0,28	1,13		
return gas temp	-23,3	-10	94,6	323	81,4	1,49	5,07	1,28	63,7	0,29	1,23		
RGT= 32/90	-20	-4	111,5	381	95,9	1,62	5,52	1,39	69,0	0,32	1,46		
liquid temp	-15	5	141,2	482	121,5	1,82	6,21	1,57	77,6	0,36	1,85		
Tliq= 55/131	-5	23	222,0	758	191,1	2,18	7,44	1,88	101,9	0,47	2,92		