

Model

Designation	NLE13KTK.2	220-240V/50Hz 1~	Sales code:	105H6929
-------------	-------------------	-------------------------	-------------	-----------------

Compressor design

Oil type	Mineral	Refrigerant(s)	R600a
Oil viscosity	15cST	Displacement	13,25cm ³ / 0,81cu.in
Oil quantity	300cm ³ / 10,1fl.oz	Compressors on pallet	80
Refr. charge - tech. limit	150g / 5,3oz		
Free gas volume comp.	2310cm ³ / 78,1fl.oz		
Weight	10,8kg / 23,8lbs		
Motor protection	1# internal		
Winding resistance main	12Ω (at 25°C)		
Winding resistance aux	10Ω (at 25°C)		
Max. winding temp.	125°C / 257°F		
Max. discharge temp.	125°C / 257°F		



General - Configurations with NLE13KTK.2

	Conf. 1
Motorconfiguration	RSIR
Power supply (nominal)	220-240V/50Hz
Number of phases	1
Voltage range	187-254V
Approvals	-
Starting torque	LST
Note	- / -

Applications with NLE13KTK.2

	Conf. 1
Refrigerant	R600a
Application	LBP
System cooling	static
Hot gas defrost	- / -
Long interval pull down	- / -

Electrical data - Configurations with NLE13KTK.2

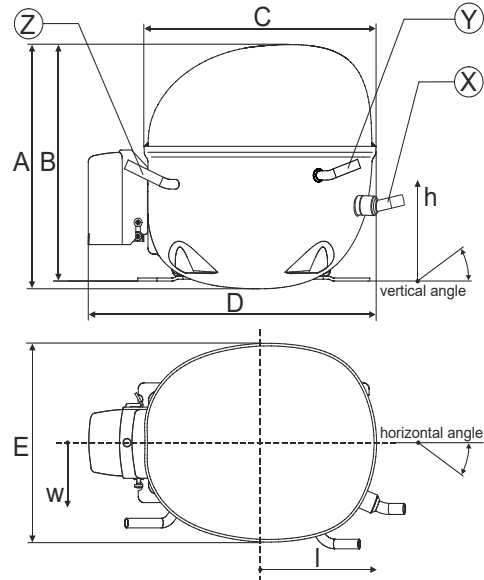
	Conf. 1
Starting device type	PTC
Run capacitor	- / -
Start capacitor	- / -
LRA (locked rotor amps / 4s)	
RLA (rated load amps / 1s)	1,4A
Cut in current	

Model

Designation	NLE13KTK.2	220-240V/50Hz 1~	Sales code:	105H6929
-------------	-------------------	------------------	-------------	-----------------

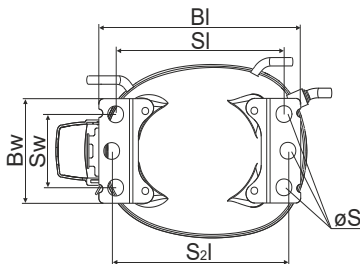
Compressor dimensions

Housing	A Height	203mm / 7,99in
	B Height	197mm / 7,76in
	C Length shell	205mm / 8,07in
	D Length w. cover	254mm / 10in
	E Width	166mm / 6,54in



Connectors		Suction	Discharge	Process
		X	Y	Z
Diameter	[mm]	øi 6,11-6,29	øi 5,12-5,22	øi 6,11-6,29
(i:inside, o:outside)	[in]	øi 0,24-0,25	øi 0,2-0,21	øi 0,24-0,25
Material		copper	copper	copper
Horizontal angle	±2°	0°	0°	0°
Vertical angle	±2°	15°	35°	155°
Position l/h/w	[mm]	126/76/78	133/103/54	-107/94/72
	[in]	4,9/3/3,1	5,2/4/2,1	-4,2/3,7/2,8
Straight tube l.	[mm]	12	12	12
	[in]	0,5	0,5	0,5

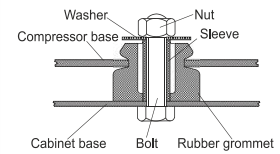
Compressor fixation



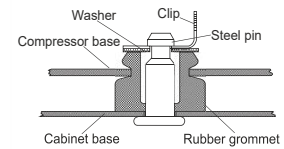
Baseplate	[mm]	[inch]
BI	204	8.03
Bw	100	3.94

Small holes	[mm]	[inch]
SI	170	6.7
Sw	70	2.76
S2l	178	7
øS	ø 16	ø 0.63

Bolt joint



Snap-on



Mounting accessories	one comp.	multi pack
Bolt joint M6 ø16mm	118-1917	118-1918
Bolt joint ø1/4" ø16mm	118-1946	
Bolt joint ø1/4" ø19mm	118-1949	
Snap-on ø7,3 ø16mm	118-1947	118-1919

Model

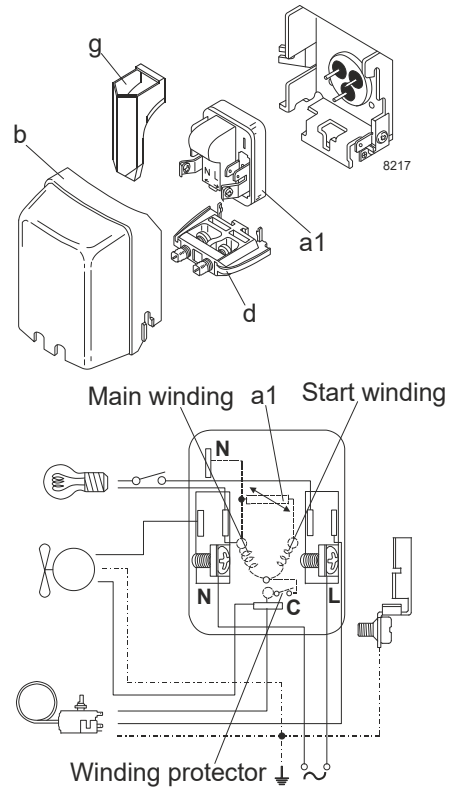
Designation **NLE13KTK.2 220-240V/50Hz** Conf. 1 Sales code: **105H6929**

Configuration

Motorconfiguration RSIR
 Power supply (nominal) 220-240V/50Hz 1~
 Refrigerant R600a
 Application LBP
 Voltage range 187-254V
 Starting torque LST
 Approvals -

Electrical accessories / wiring diagram

RSIR

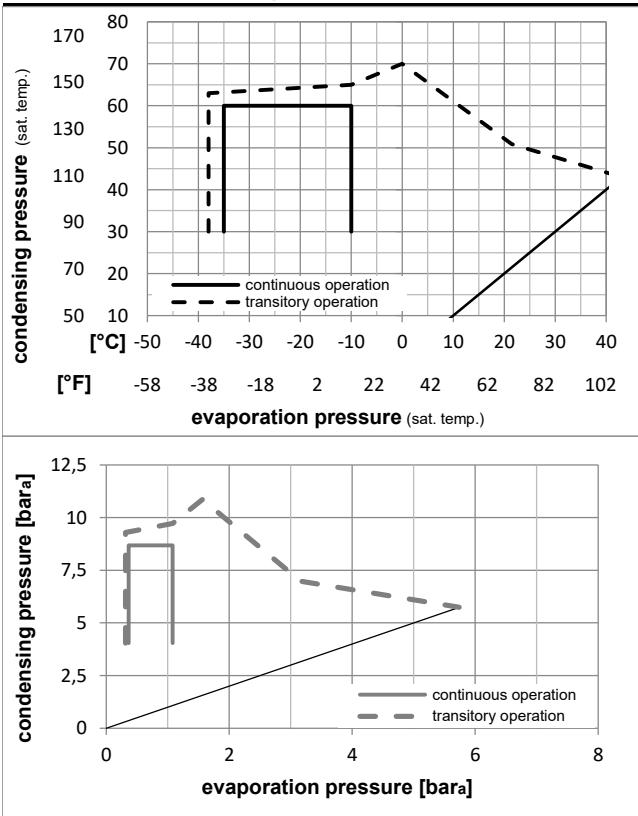


Ambient temperatures / system cooling

Ambient temperature min.: 10°C / 50°F
 Ambient temperature max.: 43°C / 110°F

System cooling (n/a: outside limits)			
T ambient	LBP	MBP	HBP
32°C / 90°F	static	n/a	n/a
38°C / 100°F	static	n/a	n/a
43°C / 110°F	static	n/a	n/a

Operation pressure range



Components

- a1 PTC starter (220V, 250hm, 4.8mm) 103N0018
- b plastic cover 103N2010
- d cord relief 103N1010
- g protection screen for PTC 103N0476

Alternative components

- a1 PTC starter (220V, 250hm, 6.3mm) 103N0011
- b plastic cover 103N2011
- d cord relief 103N1010
- g protection screen for PTC 103N0476

Model

Designation **NLE13KTK.2 220-240V/50Hz** Conf. 1 Sales code: **105H6929**

Optimization + standard conditions

R600a, 220V/50Hz, RSIR, static, -

		Evaporating pressure (saturation temperature)				Condensing pressure (saturation temperature)					Power consumption				
		Return gas temp.				Liquid temp.					Current consumption			Ref. mass flow	
		Cooling capacity				COP		EER			P1	I	m		
		pe	pc	RGT	Tliq	[W]	[Btu/h]	[kcal/h]	[W/W]	[Btu/Wh]	[kcal/Wh]	[W]	[A]	[kg/h]	
[°C]	-23,3	54,4	32,2	32,2	226,5	773	194,9	1,52	5,18	1,31	149,3	1,09	2,43	ASHRAE LBP	
[°F]	-10	130	90	90											
[°C]	-25	55	32	55	170,5	582	146,8	1,18	4,05	1,02	143,9	1,08	2,22	cecomaf LBP	
[°F]	-13	131	89,6	131											
[°C]	-35	40	20	40	117,7	402	101,3	1,10	3,75	0,94	107,3	0,98	1,43	EN12900 LBP	
[°F]	-31	104	68	104											
[°C]	-23,3	48,9	4,44	48,9	183,1	625	157,5	1,26	4,31	1,09	145,0	1,07	2,67	ARI540 LBP	
[°F]	-10	120	40	120											
[°C]	-23,3	40,6	32,2	32,2	238,6	815	205,4	1,76	6,02	1,52	135,4	1,04	2,56	AHAM LBP	
[°F]	-10	105	90	90											
[°C]	-35	45	32	45	113,5	388	97,7	1,04	3,54	0,89	109,6	0,99	1,35	opt	
[°F]	-31	113	89,6	113											

Performance tables

R600a, 220V/50Hz, RSIR, static, -

		pe	Cooling capacity			COP		EER		P1	I	m
		[°C]	[°F]	[W]	[Btu/h]	[kcal/h]	[W/W]	[Btu/Wh]	[kcal/Wh]	[W]	[A]	[kg/h]
[°C / °F]		-35	-31	113,5	388	97,7	1,04	3,54	0,89	109,6	0,99	1,35
cond. pressure		-30	-22	150,5	514	129,5	1,22	4,18	1,05	123,0	1,01	1,79
pc= 45/113		-25	-13	195,2	667	168,0	1,43	4,89	1,23	136,3	1,04	2,32
return gas temp.		-23,3	-10	212,4	725	182,8	1,51	5,15	1,30	141,0	1,05	2,53
RGT= 32/90		-20	-4	248,7	850	214,1	1,65	5,65	1,42	150,4	1,08	2,97
liquid temp		-15	5	312,2	1066	268,7	1,88	6,41	1,62	166,2	1,14	3,73
Tliq= 45/113		-10	14	386,6	1320	332,8	2,09	7,15	1,80	184,6	1,20	4,63
[°C / °F]		-35	-31	95,9	327	82,5	0,88	3,02	0,76	108,5	1,01	1,25
cond. pressure		-30	-22	129,8	443	111,7	1,03	3,50	0,88	126,6	1,04	1,69
pc= 55/131		-25	-13	170,5	582	146,8	1,18	4,05	1,02	143,9	1,08	2,22
return gas temp		-23,3	-10	186,2	636	160,2	1,24	4,24	1,07	149,8	1,09	2,43
RGT= 32/90		-20	-4	219,3	749	188,7	1,36	4,64	1,17	161,3	1,13	2,87
liquid temp		-15	5	277,1	946	238,5	1,54	5,26	1,33	179,8	1,19	3,63
Tliq= 55/131		-10	14	345,2	1179	297,1	1,73	5,89	1,49	200,0	1,27	4,53