

## Model

Designation	<b>NLX8.0KK.2</b>	220-240V/50Hz 1~	Sales code:	<b>105H6010</b>
-------------	-------------------	------------------	-------------	-----------------

## Compressor design

Oil type	Polyolester	Refrigerant(s)	<b>R600a</b>
Oil viscosity	5,8cST	Displacement	8,05cm <sup>3</sup> / 0,49cu.in
Oil quantity	264cm <sup>3</sup> / 8,9fl.oz	Compressors on pallet	80
Refr. charge - tech. limit	150g / 5,3oz		
Free gas volume comp.	2360cm <sup>3</sup> / 79,8fl.oz		
Weight	10,7kg / 23,6lbs		
Motor protection	1# internal		
Winding resistance main	27,8Ω (at 25°C)		
Winding resistance aux	32,6Ω (at 25°C)		
Max. winding temp.	95°C / 203°F		
Max. discharge temp.	130°C / 266°F		



## General - Configurations with NLX8.0KK.2

	<b>Conf. 1</b>	<b>Conf. 2</b>	<b>Conf. 3</b>
Motorconfiguration	RSCR	RSCR	RSCR
Power supply (nominal)	220-240V/50Hz	220-240V/50Hz	220-240V/50Hz
Number of phases	1	1	1
Voltage range	198-254V	198-254V	198-254V
Approvals	CCC, VDE	CCC, VDE	CCC, VDE
Starting torque	LST	LST	LST
Note	- / -		

## Applications with NLX8.0KK.2

	<b>Conf. 1</b>	<b>Conf. 2</b>	<b>Conf. 3</b>
Refrigerant	R600a	R600a	R600a
Application	LBP	LBP	LBP
System cooling	static	static	static
Hot gas defrost	- / -	- / -	- / -
Long interval pull down	- / -	- / -	- / -

## Electrical data - Configurations with NLX8.0KK.2

	<b>Conf. 1</b>	<b>Conf. 2</b>	<b>Conf. 3</b>
Starting device type	PTC	PTC	PTC
Run capacitor	3μF	3μF	3μF
Start capacitor	- / -	- / -	- / -
LRA (locked rotor amps / 4s)	2A	2A	2A
RLA (rated load amps / 1s)	0,4A	0,4A	0,4A
Cut in current	4,9A	4,9A	4,9A

## Model

Designation

**NLX8.0KK.2**

220-240V/50Hz 1~

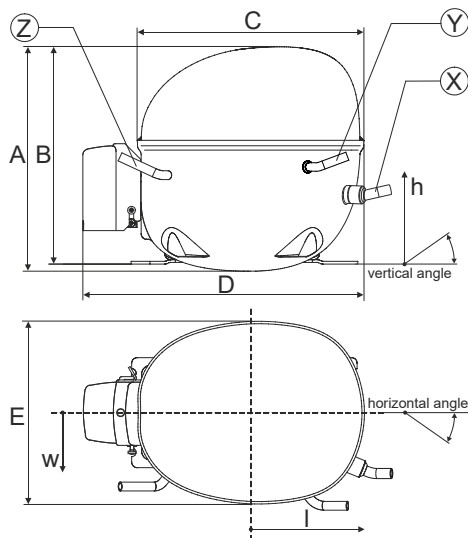
Sales code:

**105H6010**

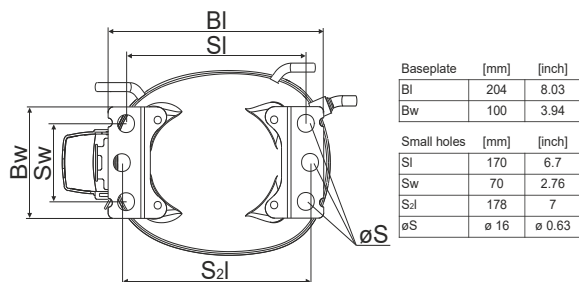
## Compressor dimensions

Housing	A Height	203mm / 7,99in
	B Height	197mm / 7,76in
	C Length shell	205mm / 8,07in
	D Length w. cover	254mm / 10in
	E Width	166mm / 6,54in

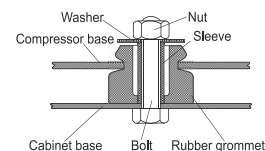
Connectors	Suction X	Discharge Y	Process Z
Diameter [mm]	øi 6,11-6,29	øi 5,12-5,22	øi 6,11-6,29
(i:inside, o:outside) [in]	øi 0,24-0,25	øi 0,2-0,21	øi 0,24-0,25
Material	copper	copper	copper
Horizontal angle ±2°	0°	0°	0°
Vertical angle ±2°	15°	21°	155°
Position l/h/w [mm]	133/71/57	91/103/81	-107/94/72
[in]	5,2/2,8/2,2	3,6/4/3,2	-4,2/3,7/2,8
Straight tube l. [mm]	12	12	12
[in]	0,5	0,5	0,5



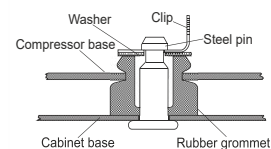
## Compressor fixation



### Bolt joint



### Snap-on



## Mounting accessories

	one comp.	multi pack
Bolt joint   M6   ø16mm	118-1917	118-1918
Bolt joint   ø1/4"   ø16mm	118-1946	
Snap-on   ø7,3   ø16mm	118-1947	118-1919

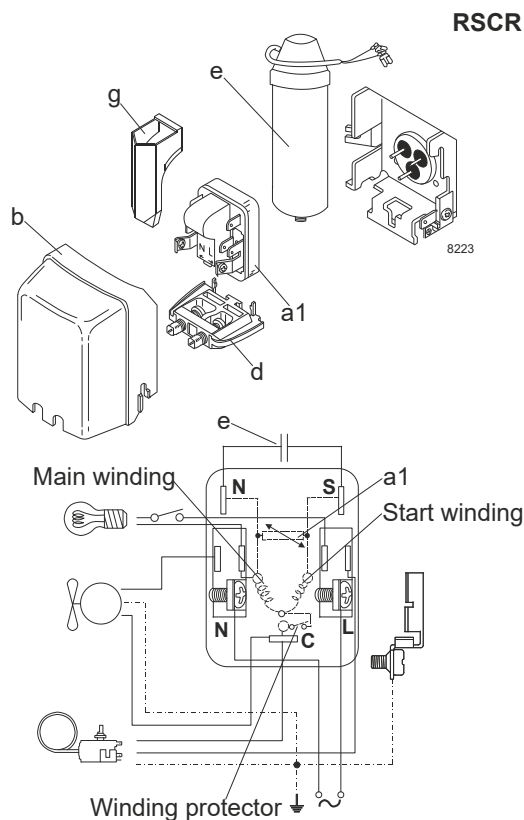
## Model

Designation	<b>NLX8.0KK.2</b>	<b>220-240V/50Hz</b>	<b>Conf. 1</b>	Sales code:	<b>105H6010</b>
-------------	-------------------	----------------------	----------------	-------------	-----------------

## Configuration

Motorconfiguration	RSCR
Power supply (nominal)	220-240V/50Hz 1~
Refrigerant	R600a
Application	LBP
Voltage range	198-254V
Starting torque	LST
Approvals	CCC VDE

## Electrical accessories / wiring diagram

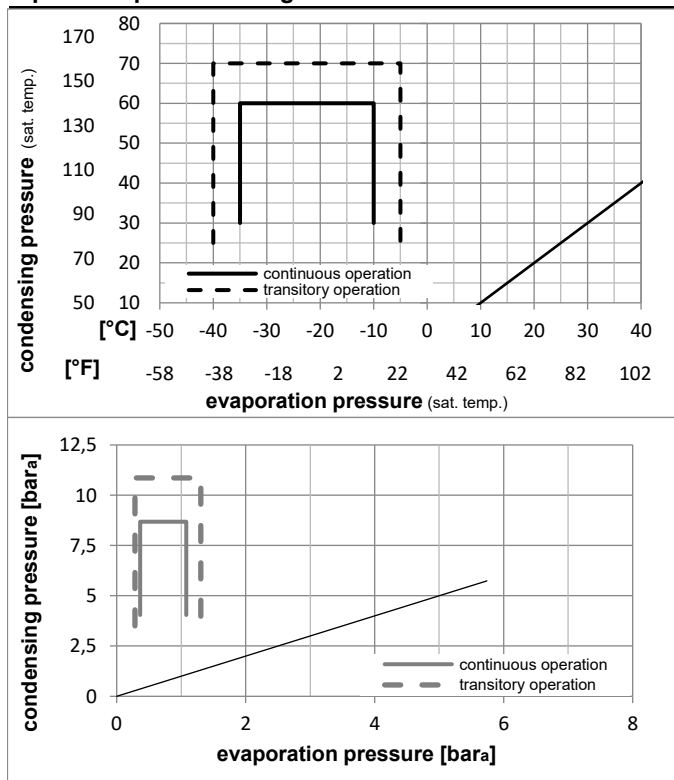


## Ambient temperatures / system cooling

Ambient temperature min.:	10°C / 50°F
Ambient temperature max.:	43°C / 110°F

System cooling (n/a: outside limits)			
T ambient	LBP	MBP	HBP
32°C / 90°F	static	n/a	n/a
38°C / 100°F	static	n/a	n/a
43°C / 110°F	static	n/a	n/a

## Operation pressure range



## Components

a1	PTC starter (220V, 250hm, 4.8mm)	103N0021
e	run capacitor (3μF, 4.8mm)	117-7132
b	plastic cover	103N2010
d	cord relief	103N1010
g	protection screen for PTC	103N0476
	bracket for run capacitor	117-0300

## Alternative components

e	run capacitor (3μF, 4.8mm)	117-7162
b	plastic cover	103N2011
	screw M4x8mm	117-0301

## Model

Designation **NLX8.0KK.2 220-240V/50Hz** Conf. 1 Sales code: **105H6010**

## Optimization + standard conditions

R600a, 220V/50Hz, RSCR, static, CCC, VDE

	Evaporating pressure (saturation temperature)				Condensing pressure (saturation temperature)			Return gas temp.	Liquid temp.	Cooling capacity	COP	EER	Power consumption			ASHRAE LBP
	pe	pc	RGT	Tliq	[W]	[Btu/h]	[kcal/h]						P1	I	Ref. mass flow	
[°C]																
[°F]																
	-23	54	32	32	132,9	454	114,4	1,88	6,40	1,61	70,9	0,33	1,43			
	-10	130	90	90												
	-25	55	32	55	99,0	338	85,2	1,47	5,01	1,26	67,5	0,32	1,29			cecomaf LBP
	-13	131	90	131												
	-35	40	20	40	71,6	245	61,6	1,47	5,02	1,27	48,7	0,23	0,87			EN12900 LBP
	-31	104	68	104												
	-23	49	4,4	49	110,8	378	95,4	1,59	5,44	1,37	69,6	0,33	1,62			ARI540 LBP
	-10	120	40	120												
	-23	41	32	32	149,4	510	128,6	2,25	7,70	1,94	66,3	0,31	1,60			AHAM LBP
	-10	105	90	90												
	-35	45	32	45	67,0	229	57,7	1,37	4,68	1,18	48,9	0,23	0,80			opt
	-31	113	90	113												

## Performance tables

R600a, 220V/50Hz, RSCR, static, CCC, VDE

	pe		Cooling capacity			COP	EER	P1	I	m	
	[°C]	[°F]	[W]	[Btu/h]	[kcal/h]	[W/W]	[Btu/Wh]	[kcal/Wh]	[W]	[A]	[kg/h]
[°C / °F]	-35	-31	67,0	229	57,7	1,37	4,68	1,18	48,9	0,23	0,80
cond. pressure	-30	-22	90,9	310	78,2	1,59	5,44	1,37	57,0	0,27	1,08
pc= 45/113	-25	-13	119,7	409	103,0	1,83	6,25	1,58	65,4	0,31	1,43
return gas temp.	-23	-10	130,8	447	112,6	1,92	6,54	1,65	68,3	0,32	1,56
RGT= 32/90	-20	-4	154,3	527	132,8	2,08	7,11	1,79	74,1	0,35	1,84
liquid temp	-15	5	195,4	667	168,1	2,35	8,02	2,02	83,2	0,39	2,33
Tliq= 45/113	-10	14	243,6	832	209,6	2,63	8,97	2,26	92,7	0,43	2,92
[°C / °F]	-35	-31	52,0	178	44,7	1,10	3,75	0,94	47,3	0,22	0,68
cond. pressure	-30	-22	73,3	250	63,1	1,28	4,37	1,10	57,2	0,27	0,95
pc= 55/131	-25	-13	99,0	338	85,2	1,47	5,01	1,26	67,5	0,32	1,29
return gas temp	-23	-10	108,9	372	93,7	1,53	5,23	1,32	71,1	0,34	1,42
RGT= 32/90	-20	-4	129,9	444	111,8	1,66	5,68	1,43	78,2	0,37	1,70
liquid temp	-15	5	166,6	569	143,4	1,86	6,37	1,60	89,4	0,42	2,18
Tliq= 55/131	-10	14	210,0	717	180,7	2,08	7,09	1,79	101,1	0,47	2,76

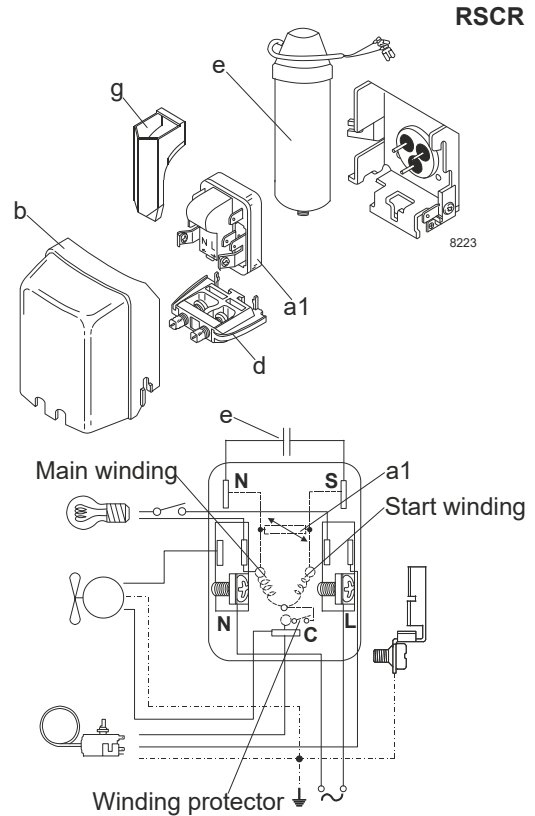
## Model

Designation	<b>NLX8.0KK.2</b>	<b>220-240V/50Hz</b>	<b>Conf. 2</b>	Sales code:	<b>105H6010</b>
-------------	-------------------	----------------------	----------------	-------------	-----------------

## Configuration

Motorconfiguration	RSCR
Power supply (nominal)	220-240V/50Hz 1~
Refrigerant	R600a
Application	LBP
Voltage range	198-254V
Starting torque	LST
Approvals	CCC VDE

## Electrical accessories / wiring diagram

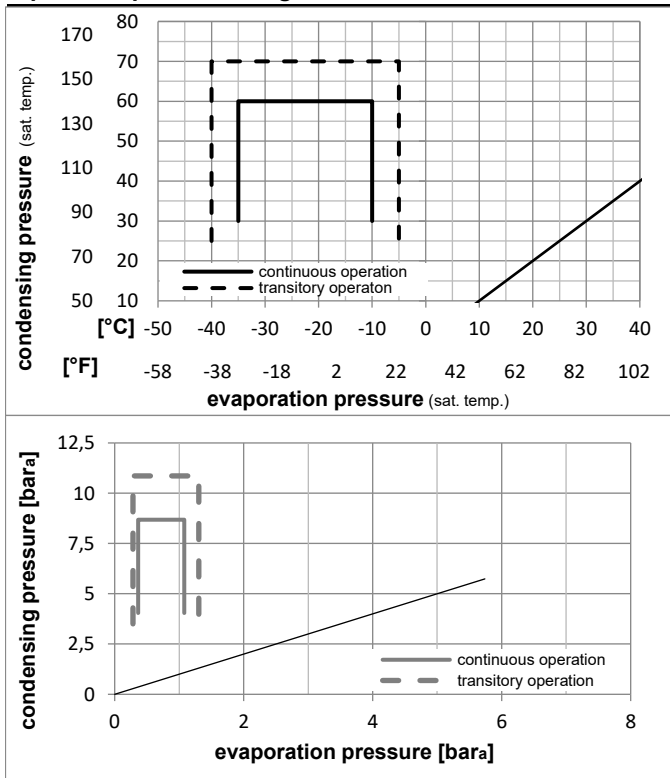


## Ambient temperatures / system cooling

Ambient temperature min.:	10°C / 50°F
Ambient temperature max.:	43°C / 110°F

System cooling (n/a: outside limits)			
T ambient	LBP	MBP	HBP
32°C / 90°F	static	n/a	n/a
38°C / 100°F	static	n/a	n/a
43°C / 110°F	static	n/a	n/a

## Operation pressure range



## Components

a1	PTC starter (220V, 250hm, 6.3mm)	103N0016
e	run capacitor (3μF, 6.3mm)	117-7131
b	plastic cover	103N2010
d	cord relief	103N1010
g	protection screen for PTC	103N0476
	bracket for run capacitor	117-0300

## Alternative components

e	run capacitor (3μF, 6.3mm)	117-7161
b	plastic cover	103N2011
	screw M4x8mm	117-0301

### Model

Designation **NLX8.0KK.2 220-240V/50Hz** Conf. 2 Sales code: **105H6010**

### Optimization + standard conditions

R600a, 220V/50Hz, RSCR, static, CCC, VDE

	Evaporating pressure (saturation temperature)				Cooling capacity			COP	EER	P1	Power consumption			ASHRAE LBP
	pe	pc	RGT	Tliq	[W]	[Btu/h]	[kcal/h]				l	Current consumption	Ref. mass flow	
	[°C]	[°F]	[°C]	[°F]	[W]	[Btu/h]	[kcal/h]	[W/W]	[Btu/Wh]	[kcal/Wh]	[W]	[A]	[kg/h]	
	-23	54	32	32	132,9	454	114,4	1,88	6,40	1,61	70,9	0,33	1,43	ASHRAE LBP
	[-10]	130	90	90										
	-25	55	32	55	99,0	338	85,2	1,47	5,01	1,26	67,5	0,32	1,29	cecomaf LBP
	[-13]	131	90	131										
	-35	40	20	40	71,6	245	61,6	1,47	5,02	1,27	48,7	0,23	0,87	EN12900 LBP
	[-31]	104	68	104										
	-23	49	4,4	49	110,8	378	95,4	1,59	5,44	1,37	69,6	0,33	1,62	ARI540 LBP
	[-10]	120	40	120										
	-23	41	32	32	149,4	510	128,6	2,25	7,70	1,94	66,3	0,31	1,60	AHAM LBP
	[-10]	105	90	90										
	-35	45	32	45	67,0	229	57,7	1,37	4,68	1,18	48,9	0,23	0,80	opt
	[-31]	113	90	113										

### Performance tables

R600a, 220V/50Hz, RSCR, static, CCC, VDE

	pe		Cooling capacity			COP	EER	P1	l	m	
	[°C]	[°F]	[W]	[Btu/h]	[kcal/h]						
[°C / °F]	-35	-31	67,0	229	57,7	1,37	4,68	1,18	48,9	0,23	0,80
cond. pressure	-30	-22	90,9	310	78,2	1,59	5,44	1,37	57,0	0,27	1,08
pc= 45/113	-25	-13	119,7	409	103,0	1,83	6,25	1,58	65,4	0,31	1,43
return gas temp.	-23	-10	130,8	447	112,6	1,92	6,54	1,65	68,3	0,32	1,56
RGT= 32/90	-20	-4	154,3	527	132,8	2,08	7,11	1,79	74,1	0,35	1,84
liquid temp	-15	5	195,4	667	168,1	2,35	8,02	2,02	83,2	0,39	2,33
Tliq= 45/113	-10	14	243,6	832	209,6	2,63	8,97	2,26	92,7	0,43	2,92
[°C / °F]	-35	-31	52,0	178	44,7	1,10	3,75	0,94	47,3	0,22	0,68
cond. pressure	-30	-22	73,3	250	63,1	1,28	4,37	1,10	57,2	0,27	0,95
pc= 55/131	-25	-13	99,0	338	85,2	1,47	5,01	1,26	67,5	0,32	1,29
return gas temp	-23	-10	108,9	372	93,7	1,53	5,23	1,32	71,1	0,34	1,42
RGT= 32/90	-20	-4	129,9	444	111,8	1,66	5,68	1,43	78,2	0,37	1,70
liquid temp	-15	5	166,6	569	143,4	1,86	6,37	1,60	89,4	0,42	2,18
Tliq= 55/131	-10	14	210,0	717	180,7	2,08	7,09	1,79	101,1	0,47	2,76

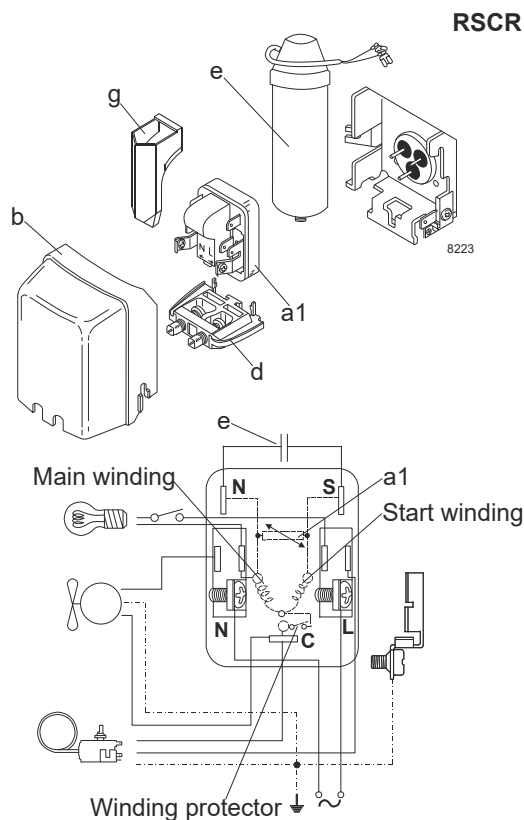
## Model

Designation	<b>NLX8.0KK.2</b>	<b>220-240V/50Hz</b>	<b>Conf. 3</b>	Sales code:	<b>105H6010</b>
-------------	-------------------	----------------------	----------------	-------------	-----------------

## Configuration

Motorconfiguration	RSCR
Power supply (nominal)	220-240V/50Hz 1~
Refrigerant	R600a
Application	LBP
Voltage range	198-254V
Starting torque	LST
Approvals	CCC VDE

## Electrical accessories / wiring diagram

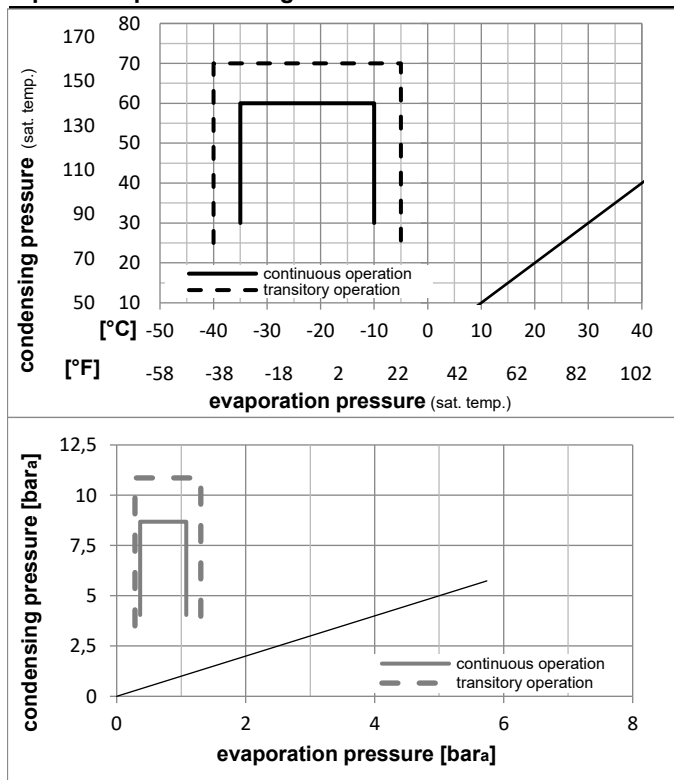


## Ambient temperatures / system cooling

Ambient temperature min.:	10°C / 50°F
Ambient temperature max.:	43°C / 110°F

System cooling (n/a: outside limits)			
T ambient	LBP	MBP	HBP
32°C / 90°F	static	n/a	n/a
38°C / 100°F	static	n/a	n/a
43°C / 110°F	static	n/a	n/a

## Operation pressure range



## Components

a1	e-PTC starter (220V, 380hm, 4.8mm)	103N0055
e	run capacitor (3μF, 4.8mm)	117-7132
b	plastic cover	103N2010
d	cord relief	103N1010
g	protection screen for PTC	103N0476
	bracket for run capacitor	117-0300

## Alternative components

b	plastic cover	103N2011
	screw M4x8mm	117-0301

### Model

Designation **NLX8.0KK.2** **220-240V/50Hz** Conf. 3 Sales code: **105H6010**

### Optimization + standard conditions

R600a, 220V/50Hz, RSCR, static, CCC, VDE

		Evaporating pressure (saturation temperature)				Condensing pressure (saturation temperature)						Power consumption			
		Return gas temp.		Liquid temp.		Cooling capacity		COP	EER		P1	I	Ref. mass flow		
		pe	pc	RGT	Tliq	[W]	[Btu/h]	[kcal/h]	[W/W]	[Btu/Wh]	[kcal/Wh]	[W]	[A]	[kg/h]	
[°C]	[°F]	[°C]	[°F]	[°C]	[°F]										
-23	54	32	32	132,9	454	114,4	1,88	6,40	1,61	70,9	0,33	1,43	ASHRAE LBP		
-10	130	90	90												
-25	55	32	55	99,0	338	85,2	1,47	5,01	1,26	67,5	0,32	1,29	cecomaf LBP		
-13	131	90	131												
-35	40	20	40	71,6	245	61,6	1,47	5,02	1,27	48,7	0,23	0,87	EN12900 LBP		
-31	104	68	104												
-23	49	4,4	49	110,8	378	95,4	1,59	5,44	1,37	69,6	0,33	1,62	ARI540 LBP		
-10	120	40	120												
-23	41	32	32	149,4	510	128,6	2,25	7,70	1,94	66,3	0,31	1,60	AHAM LBP		
-10	105	90	90												
-35	45	32	45	67,0	229	57,7	1,37	4,68	1,18	48,9	0,23	0,80	opt		
-31	113	90	113												

### Performance tables

R600a, 220V/50Hz, RSCR, static, CCC, VDE

	pe		Cooling capacity			COP	EER	P1	I	m	
	[°C]	[°F]	[W]	[Btu/h]	[kcal/h]	[W/W]	[Btu/Wh]				[kcal/Wh]
[°C / °F]	-35	-31	67,0	229	57,7	1,37	4,68	1,18	48,9	0,23	0,80
cond. pressure	-30	-22	90,9	310	78,2	1,59	5,44	1,37	57,0	0,27	1,08
pc= 45/113	-25	-13	119,7	409	103,0	1,83	6,25	1,58	65,4	0,31	1,43
return gas temp.	-23	-10	130,8	447	112,6	1,92	6,54	1,65	68,3	0,32	1,56
RGT= 32/90	-20	-4	154,3	527	132,8	2,08	7,11	1,79	74,1	0,35	1,84
liquid temp	-15	5	195,4	667	168,1	2,35	8,02	2,02	83,2	0,39	2,33
Tliq= 45/113	-10	14	243,6	832	209,6	2,63	8,97	2,26	92,7	0,43	2,92
[°C / °F]	-35	-31	52,0	178	44,7	1,10	3,75	0,94	47,3	0,22	0,68
cond. pressure	-30	-22	73,3	250	63,1	1,28	4,37	1,10	57,2	0,27	0,95
pc= 55/131	-25	-13	99,0	338	85,2	1,47	5,01	1,26	67,5	0,32	1,29
return gas temp	-23	-10	108,9	372	93,7	1,53	5,23	1,32	71,1	0,34	1,42
RGT= 32/90	-20	-4	129,9	444	111,8	1,66	5,68	1,43	78,2	0,37	1,70
liquid temp	-15	5	166,6	569	143,4	1,86	6,37	1,60	89,4	0,42	2,18
Tliq= 55/131	-10	14	210,0	717	180,7	2,08	7,09	1,79	101,1	0,47	2,76