

Cable Clamp Optimization for KL-Series

The current cable clamp for 60 Hz KL-Series compressors is available in black (Figure 3) with VDE and UL approval; the cable clamp for 50 Hz KL-Series compressors is available in white (Figure 2) with VDE approval. Both versions have the same design/dimensions and fulfill the V0 safety class level.

Approvals

To optimize the accessory components of the KL-Series and minimize the possible supply chain risk in the future, Secop has finalized the related approval updates. This allows both versions to be used on the same compressor without any impact on compressor assembly at the customer end or in the field.

Timing and Availability

From January 2024, Secop will unify the cable clamp (code number 16058100) by using the black version for all KL-Series deliveries (both 60 Hz and 50 Hz compressor models), which also simplifies customer inventory management. The white version will be available as an alternative in case meet of supply chain issues in the future.

Further Information

For further information, please contact your local Secop representative if you have any questions.

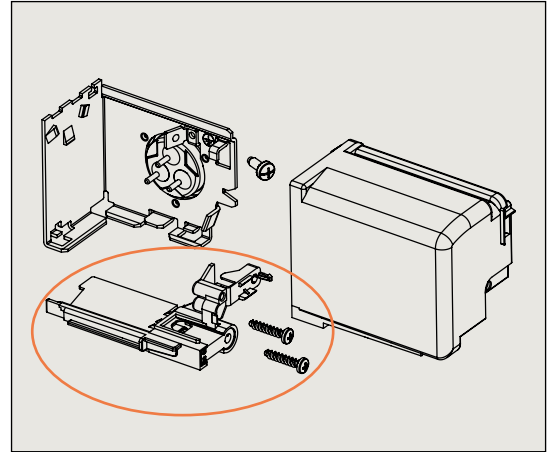


Fig. 1 KL-Series' cable clamp mounting position

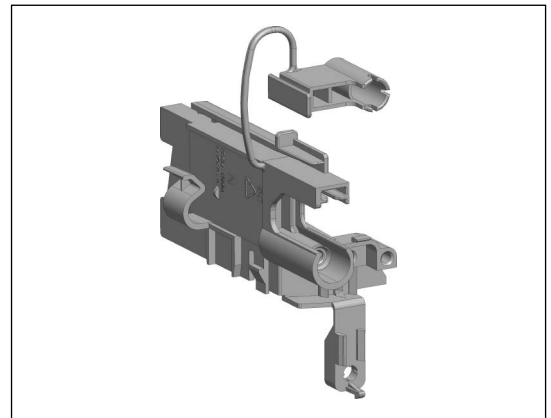


Fig. 2 KL-Series cable clamp 16058100, white



Fig. 3 KL-Series cable clamp 16058100, black