

## Model

Designation	<b>HXK55NG</b>	<b>220-240V/50Hz 1~ 208-230V/60Hz 1~</b>	Sales code:	<b>16512000</b>
-------------	----------------	--	-------------	-----------------

## Compressor design

Oil type	Mineral	Refrigerant(s)	<b>R600a</b>
Oil viscosity	5cSt	Displacement	5,6cm <sup>3</sup> / 0,34cu.in
Oil quantity	165cm <sup>3</sup> / 5,6fl.oz	Compressors on pallet	100
Refr. charge - tech. limit	150g / 5,3oz		
Free gas volume comp.	1500cm <sup>3</sup> / 50,7fl.oz		
Weight	7,8kg / 17,2lbs		
Motor protection	external		
Winding resistance main	32,7Ω (at 25°C)		
Winding resistance aux	29,2Ω (at 25°C)		
Max. winding temp.	130°C / 266°F		
Max. discharge temp.	130°C / 266°F		



## General - Configurations with HXK55NG

	<b>Conf. 1</b>	<b>Conf. 2</b>
Motor configuration	eRSCR	eRSCR
Power supply (nominal)	220-240V/50Hz	208-230V/60Hz
Number of phases	1	1
Voltage range	198-254V	187-253V
Approvals	VDE	VDE
Starting torque	LST	LST
Note	Electrical equipment is included and pre-assembled to compressor.	

## Applications with HXK55NG

	<b>Conf. 1</b>	<b>Conf. 2</b>
Refrigerant	R600a	R600a
Application	LBP+MBP	LBP+MBP
System cooling	static	static
Hot gas defrost	-/-	-/-
Long interval pull down	-/-	-/-

## Electrical data - Configurations with HXK55NG

	<b>Conf. 1</b>	<b>Conf. 2</b>
Starting device type	e-PTC	e-PTC
Run capacitor	3μF	3μF
Start capacitor	-/-	-/-
LRA (locked rotor amps / 4s/ U(N))	3,4A	2,9A
RLA (rated load amps / 1s/ U(N))	0,5A	0,5A
Cut in current (U(N))	7A	6,3A

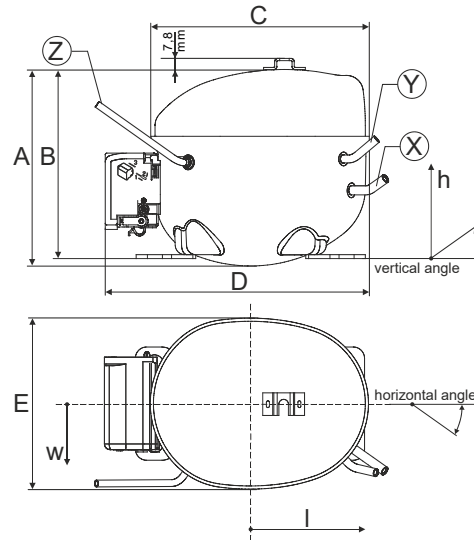
## Model

Designation **HXK55NG** 220-240V/50Hz 1~ 208-230V/60Hz 1~ Sales code: **16512000**

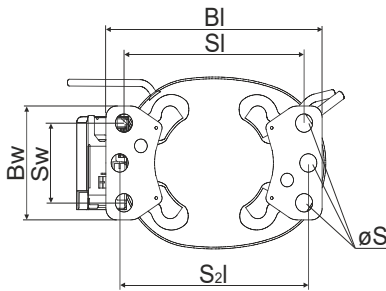
## Compressor dimensions

<b>Housing</b>	A Height	166mm / 6,54in
	B Height	159mm / 6,26in
	C Length shell	194mm / 7,64in
	D Length w. cover	238mm / 9,37in
	E Width	151mm / 5,94in

Connectors		Suction	Discharge	Process
		X	Y	Z
Diameter	[mm]	øi 6,1-6,2	øi 5,1-5,2	øo 5,92-6,08
(i:inside, o:outside)	[in]	øi 0,24-0,24	øi 0,2-0,2	øo 0,23-0,24
Material		copper	copper	copper
Horizontal angle	±2°	45°	13°	0°
Vertical angle	±2°	30°	40°	145°
Position l/h/w	[mm]	120/72/62	112/106/62	-140/136/70
	[in]	4,7/2,8/2,4	4,4/4,2/2,4	-5,5/5,4/2,8
Straight tube l.	[mm]	14	14	75
	[in]	0,5	0,5	3

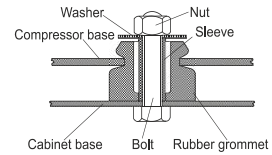


## Compressor fixation

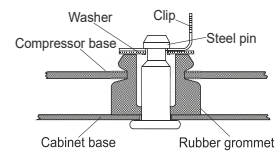


Baseplate	[mm]	[inch]
BI	204	8.03
Bw	100	3.94
Small holes		
	[mm]	[inch]
SI	170	6.7
Sw	70	2.76
S2l	178	7
øS	ø 16	ø 0.63

### Bolt joint



### Snap-on



## Mounting accessories

- '4ZN' with rubber grommet
- '4ZN' with rubber grommet and sleeve for M6
- Bolt joint kit
- '4ZN' with Snap on kit

- order code
- 772N
  - 768N
  - 4ZN + 118-1917 (18)
  - 776N

## Application notes

Provision for PE Grounding is located at the PE Stamp on the compressor Housing with dip-tray fixture (omega bracket).  
 Various options of connectors are possible - please contact SECOP-Sales.

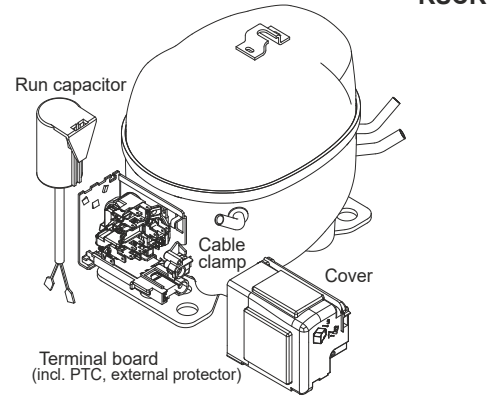
## Model

Designation	<b>HXK55NG</b>	<b>220-240V/50Hz</b>	<b>Conf. 1</b>	Sales code:	<b>16512000</b>
-------------	----------------	----------------------	----------------	-------------	-----------------

## Configuration

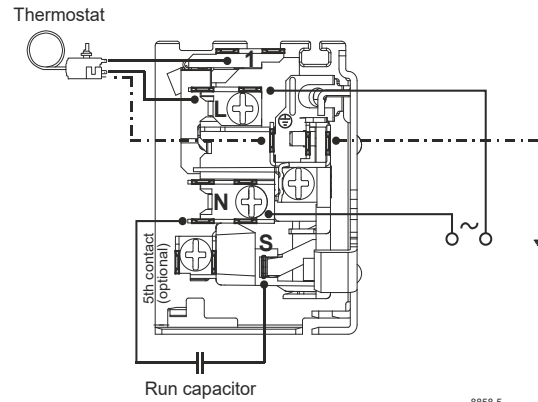
Motor configuration	eRSCR
Power supply (nominal)	220-240V/50Hz 1~
Refrigerant	R600a
Application	LBP+MBP
Voltage range	198-254V
Starting torque	LST
Approvals	VDE

## Electrical accessories / wiring diagram

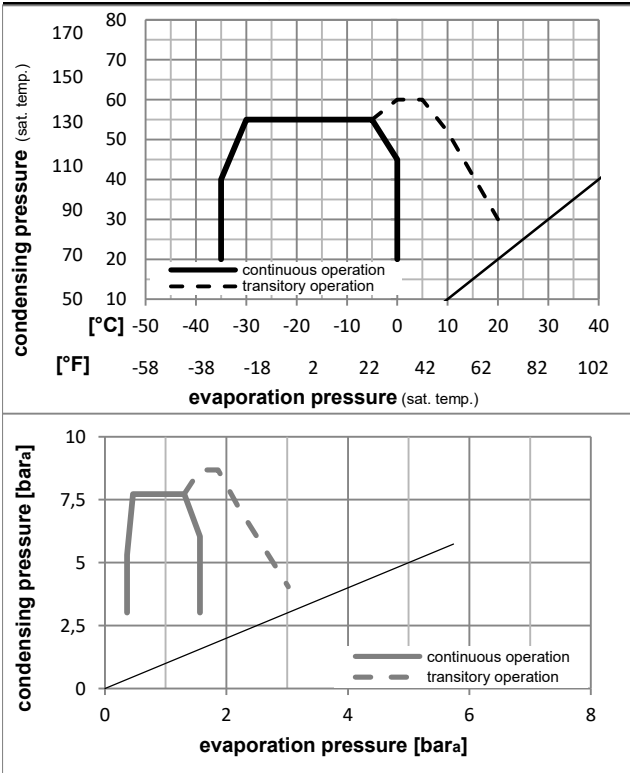


## Ambient/ machine room temperatures minimum /maximum

Ambient temperature range:	10 - 43°C / 50 - 110°F
Machine room temperature range:	10 - 48°C / 50 - 119°F
Compressor cooling:	static



## Operation pressure range



## Components (incl. and pre. assembi.)

terminal board (ePTC)	103N0280
run capacitor (3μF, 4.8mm)	10693200
b, d cover + clamp + screws(5VA-compl.)	103N0600

## Alternative comp.

b, d 100x cover + clamp + screws(5VA)	103n2060
b, d cover + clamp + screws(5VA) in bag	103N1060

## Model

Designation **HXK55NG** **220-240V/50Hz** Conf. 1 Sales code: **16512000**

## Optimization + standard conditions

R600a, 220V/50Hz, eRSCR, static, VDE

	Evaporating pressure (saturation temperature)				Condensing pressure (saturation temperature)			Return gas temp.			Liquid temp.			Cooling capacity			COP	EER	Power consumption			
	pe	pc	RGT	Tliq	[W]	[Btu/h]	[kcal/h]	[W/W]	[Btu/Wh]	[kcal/Wh]	[W]	I	m	[W]	[A]	[kg/h]						
[°C]	-23	54	32	32	98,0	335	84,3	1,55	5,31	1,34	63,0	0,59	1,05									
[°F]	-10	130	90	90																	ASHRAE LBP	
[°C]	-25	55	32	55	72,8	249	62,6	1,19	4,06	1,02	61,2	0,58	0,95								cecomaf LBP	
[°F]	-13	131	90	131																		
[°C]	-35	40	20	40	47,7	163	41,1	1,04	3,55	0,89	45,9	0,55	0,58								EN12900 LBP	
[°F]	-31	104	68	104																		
[°C]	-7	54	35	46	207,4	708	178,5	2,27	7,75	1,95	91,4	0,67	2,47								ASHRAE MBP	
[°F]	20	130	95	115																		
[°C]	-10	55	32	55	161,5	552	139,0	1,90	6,47	1,63	85,2	0,65	2,12								cecomaf MBP	
[°F]	14	131	90	131																		
[°C]	-10	45	20	45	180,0	615	154,9	2,26	7,73	1,95	79,5	0,63	2,31								EN12900 MBP	
[°F]	14	113	68	113																		

## Performance tables

R600a, 220V/50Hz, eRSCR, static, VDE

	pe		Cooling capacity			COP	EER	P1	I	m	
	[°C]	[°F]	[W]	[Btu/h]	[kcal/h]	[W/W]	[Btu/Wh]	[kcal/Wh]	[W]	[A]	[kg/h]
[°C / °F]	-35	-31	45,0	154	38,7	0,97	3,31	0,83	46,4	0,55	0,53
cond. pressure	-30	-22	63,2	216	54,4	1,23	4,22	1,06	51,2	0,56	0,75
pc= 45/113	-25	-13	85,9	293	73,9	1,51	5,15	1,30	57,0	0,57	1,02
return gas temp.	-23	-10	94,8	324	81,6	1,60	5,47	1,38	59,2	0,58	1,13
RGT= 32/90	-15	5	147,4	503	126,8	2,07	7,06	1,78	71,3	0,61	1,76
liquid temp	-5	23	234,1	800	201,5	2,66	9,08	2,29	88,0	0,66	2,81
Tliq= 45/113	0	32	288,4	985	248,2	2,98	10,17	2,56	96,9	0,68	3,47
[°C / °F]	-35	-31	37,7	129	32,4	0,73	2,51	0,63	51,4	0,56	0,49
cond. pressure	-30	-22	53,2	182	45,8	0,96	3,27	0,82	55,5	0,57	0,69
pc= 55/131	-25	-13	72,8	249	62,6	1,19	4,06	1,02	61,2	0,58	0,95
return gas temp	-23	-10	80,4	275	69,2	1,27	4,34	1,09	63,4	0,59	1,05
RGT= 32/90	-15	5	126,3	431	108,7	1,66	5,67	1,43	76,2	0,62	1,65
liquid temp	-5	23	203,1	694	174,8	2,14	7,30	1,84	95,1	0,68	2,67
Tliq= 55/131	0	32	251,6	859	216,5	2,38	8,14	2,05	105,6	0,71	3,32

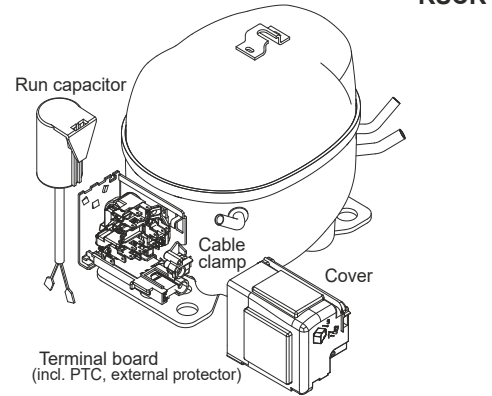
## Model

Designation	<b>HXK55NG</b>	<b>208-230V/60Hz</b>	<b>Conf. 2</b>	Sales code:	<b>16512000</b>
-------------	----------------	----------------------	----------------	-------------	-----------------

## Configuration

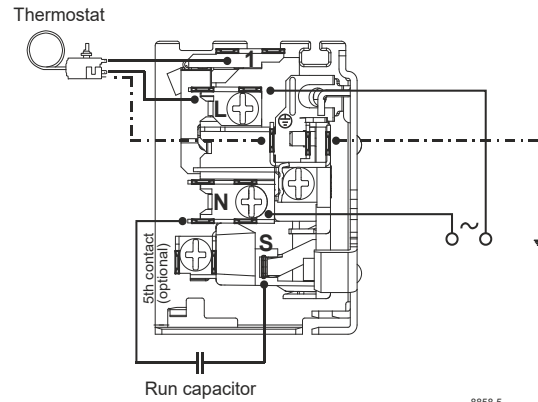
Motor configuration	eRSCR
Power supply (nominal)	208-230V/60Hz 1~
Refrigerant	R600a
Application	LBP+MBP
Voltage range	187-253V
Starting torque	LST
Approvals	VDE

## Electrical accessories / wiring diagram

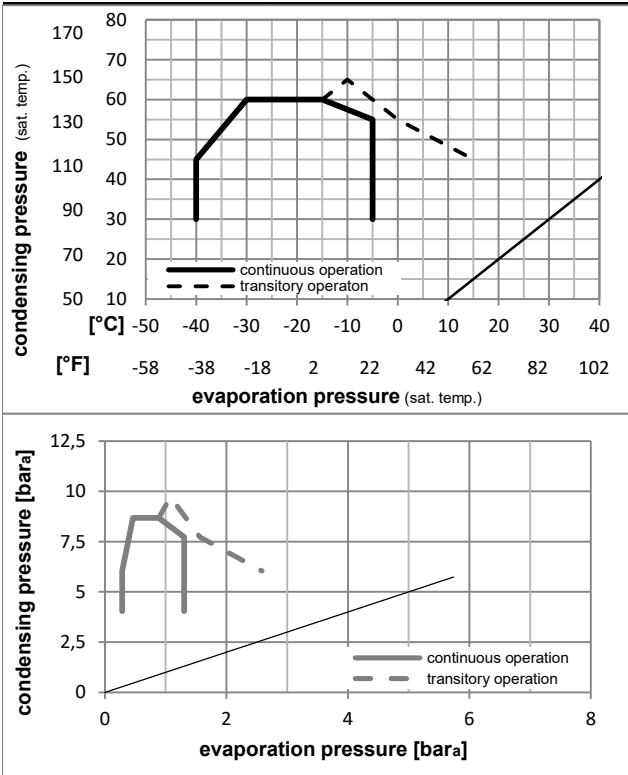


## Ambient/ machine room temperatures minimum /maximum

Ambient temperature range:	10 - 43°C / 50 - 110°F
Machine room temperature range:	10 - 48°C / 50 - 119°F
Compressor cooling:	static



## Operation pressure range



## Components (incl. and pre. assemb.)

terminal board (ePTC)	103N0280
run capacitor (3μF, 4.8mm)	10693200
b, d cover + clamp + screws(5VA-compl.)	103N0600

## Alternative comp.

b, d 100x cover + clamp + screws(5VA)	103n2060
b, d cover + clamp + screws(5VA) in bag	103N1060

## Model

Designation **HXK55NG** **208-230V/60Hz** Conf. 2 Sales code: **16512000**

## Optimization + standard conditions

R600a, 230V/60Hz, eRSCR, static, VDE

	Evaporating pressure (saturation temperature)				Cooling capacity			COP	EER	Power consumption			ASHRAE LBP	
	pe	pc	RGT	Tliq	[W]	[Btu/h]	[kcal/h]			P1	I	m		
	[°C]	[°F]	[°C]	[°F]	[W]	[Btu/h]	[kcal/h]	[W/W]	[Btu/Wh]	[kcal/Wh]	[W]	[A]	[kg/h]	
	-23	54	32	32	110,3	377	94,9	1,63	5,58	1,41	67,5	0,35	1,18	ASHRAE LBP
	-10	130	90	90										
	-25	55	32	55	81,1	277	69,8	1,26	4,30	1,08	64,4	0,34	1,06	cecomaf LBP
	-13	131	90	131										
	-35	40	20	40	51,2	175	44,1	1,18	4,03	1,01	43,5	0,26	0,62	EN12900 LBP
	-31	104	68	104										
	-7	54	35	46	235,9	806	203,0	2,26	7,73	1,95	104,2	0,50	2,81	ASHRAE MBP
	20	130	95	115										
	-10	55	32	55	184,6	630	158,8	1,91	6,51	1,64	96,8	0,47	2,42	cecomaf MBP
	14	131	90	131										
	-10	45	20	45	204,7	699	176,2	2,31	7,90	1,99	88,5	0,43	2,63	EN12900 MBP
	14	113	68	113										

## Performance tables

R600a, 230V/60Hz, eRSCR, static, VDE

	pe		Cooling capacity			COP	EER		P1	I	m
	[°C]	[°F]	[W]	[Btu/h]	[kcal/h]		[Btu/Wh]	[kcal/Wh]			
[°C / °F]	-35	-31	48,0	164	41,3	1,09	3,71	0,94	44,1	0,27	0,57
cond. pressure	-30	-22	70,1	239	60,3	1,35	4,62	1,17	51,8	0,29	0,83
pc= 45/113	-25	-13	97,3	332	83,7	1,62	5,52	1,39	60,2	0,32	1,16
return gas temp.	-23	-10	107,8	368	92,8	1,71	5,83	1,47	63,2	0,34	1,28
RGT= 32/90	-20	-4	130,0	444	111,9	1,88	6,41	1,62	69,2	0,36	1,55
liquid temp	-15	5	168,5	575	145,0	2,14	7,31	1,84	78,7	0,39	2,01
Tliq= 45/113	-5	23	264,1	902	227,3	2,68	9,16	2,31	98,5	0,47	3,17
[°C / °F]	-35	-31	37,2	127	32,0	0,80	2,73	0,69	46,6	0,27	0,48
cond. pressure	-30	-22	56,9	194	48,9	1,03	3,53	0,89	55,0	0,30	0,74
pc= 55/131	-25	-13	81,1	277	69,8	1,26	4,30	1,08	64,4	0,34	1,06
return gas temp	-23	-10	90,4	309	77,8	1,33	4,56	1,15	67,8	0,35	1,18
RGT= 32/90	-20	-4	110,2	377	94,9	1,48	5,05	1,27	74,6	0,38	1,44
liquid temp	-15	5	144,6	494	124,5	1,69	5,78	1,46	85,5	0,42	1,89
Tliq= 55/131	-5	23	230,4	787	198,3	2,12	7,25	1,83	108,6	0,51	3,03