

Model

| | | | | |
|-------------|----------------|------------------|-------------|-----------------|
| Designation | HXK95AA | 220-240V/50Hz 1~ | Sales code: | 16348100 |
|-------------|----------------|------------------|-------------|-----------------|

Compressor design

| | | | |
|----------------------------|---------------------------------|-----------------------|--------------------------------|
| Oil type | Mineral | Refrigerant(s) | R600a |
| Oil viscosity | 5cST | Displacement | 9,6cm ³ / 0,59cu.in |
| Oil quantity | 162cm ³ / 5,5fl.oz | Compressors on pallet | 100 |
| Refr. charge - tech. limit | 150g / 5,3oz | | |
| Free gas volume comp. | 1560cm ³ / 52,7fl.oz | | |
| Weight | 9,3kg / 20,5lbs | | |
| Motor protection | external | | |
| Winding resistance main | 22,4Ω (at 25°C) | | |
| Winding resistance aux | 15,3Ω (at 25°C) | | |
| Max. winding temp. | 130°C / 266°F | | |
| Max. discharge temp. | 130°C / 266°F | | |



General - Configurations with HXK95AA

| | |
|------------------------|--|
| | Conf. 1 |
| Motorconfiguration | RSCR |
| Power supply (nominal) | 220-240V/50Hz |
| Number of phases | 1 |
| Voltage range | 187-264V |
| Approvals | VDE |
| Starting torque | LST |
| Note | Various options of connectors are possible - please contact SECOP-Sales. |

Applications with HXK95AA

| | |
|-------------------------|----------------|
| | Conf. 1 |
| Refrigerant | R600a |
| Application | LBP |
| System cooling | static |
| Hot gas defrost | -/- |
| Long interval pull down | -/- |

Electrical data - Configurations with HXK95AA

| | |
|------------------------------------|----------------|
| | Conf. 1 |
| Starting device type | PTC |
| Run capacitor | 4μF |
| Start capacitor | -/- |
| LRA (locked rotor amps / 4s/ U(N)) | |
| RLA (rated load amps / 1s/ U(N)) | -/-A |
| Cut in current (U(N)) | |

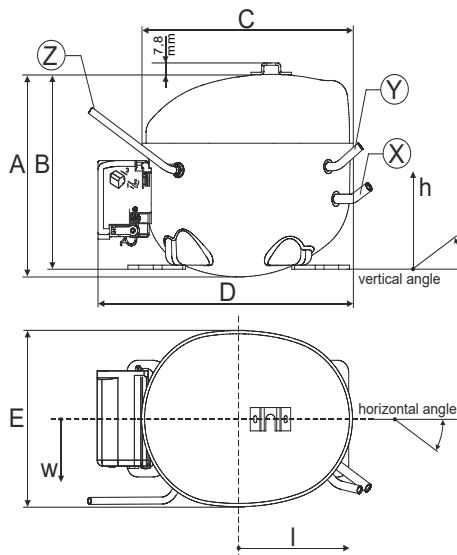
Model

| | | | | |
|-------------|----------------|------------------|-------------|-----------------|
| Designation | HXK95AA | 220-240V/50Hz 1~ | Sales code: | 16348100 |
|-------------|----------------|------------------|-------------|-----------------|

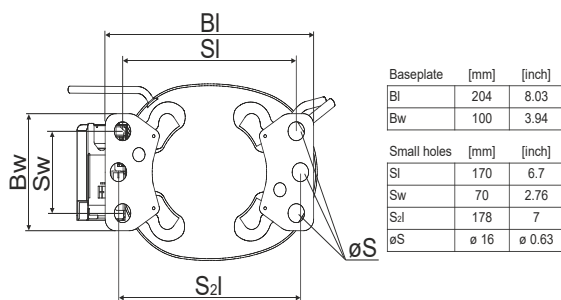
Compressor dimensions

| | | |
|----------------|-------------------|----------------|
| Housing | A Height | 174mm / 6,85in |
| | B Height | 167mm / 6,57in |
| | C Length shell | 194mm / 7,64in |
| | D Length w. cover | 238mm / 9,37in |
| | E Width | 151mm / 5,94in |

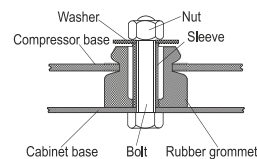
| Connectors | | Suction | Discharge | Process |
|-------------------|----------------------------|----------------|------------------|----------------|
| | | X | Y | Z |
| Diameter | [mm] | øi 6,1-6,2 | øi 5,1-5,2 | #NV |
| | (i:inside, o:outside) [in] | øi 0,24-0,24 | øi 0,2-0,2 | #NV |
| Material | | copper | copper | #NV |
| Horizontal angle | ±2° | 45° | 13° | 0° |
| Vertical angle | ±2° | 35° | 40° | 145° |
| Position l/h/w | [mm] | 120/72/62 | 112/106/62 | -140/136/70 |
| | [in] | 4,7/2,8/2,4 | 4,4/4,2/2,4 | -5,5/5,4/2,8 |
| Straight tube l. | [mm] | 14 | 14 | #NV |
| | [in] | 0,5 | 0,5 | #NV |



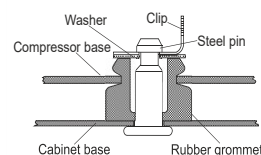
Compressor fixation



Bolt joint



Snap-on



Mounting accessories

| | | |
|---|------------|---------------------|
| '4ZN' with rubber grommet | order code | 772N |
| '4ZN' with rubber grommet and sleeve for M6 | | 768N |
| Bolt joint kit | | 4ZN + 118-1917 (18) |
| '4ZN' with Snap on kit | | 776N |

Application notes

Provision for PE Grounding is located at the PE Stamp on the compressor Housing with dip-tray fixture (omega bracket).
 Various options of connectors are possible - please contact SECOP-Sales.

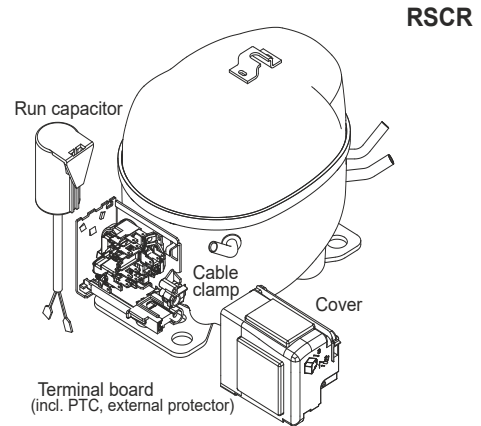
Model

| | | | | | |
|-------------|----------------|----------------------|---------|-------------|-----------------|
| Designation | HXK95AA | 220-240V/50Hz | Conf. 1 | Sales code: | 16348100 |
|-------------|----------------|----------------------|---------|-------------|-----------------|

Configuration

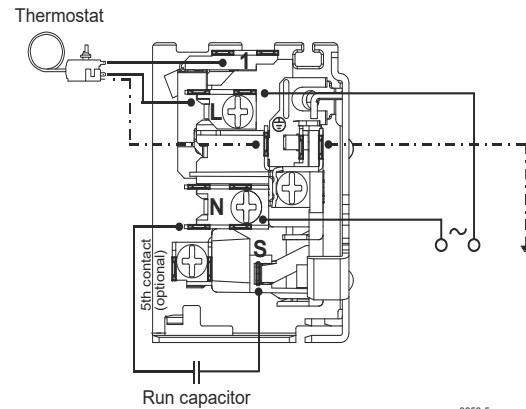
| | |
|------------------------|------------------|
| Motorconfiguration | RSCR |
| Power supply (nominal) | 220-240V/50Hz 1~ |
| Refrigerant | R600a |
| Application | LBP |
| Voltage range | 187-264V |
| Starting torque | LST |
| Approvals | VDE |

Electrical accessories / wiring diagram

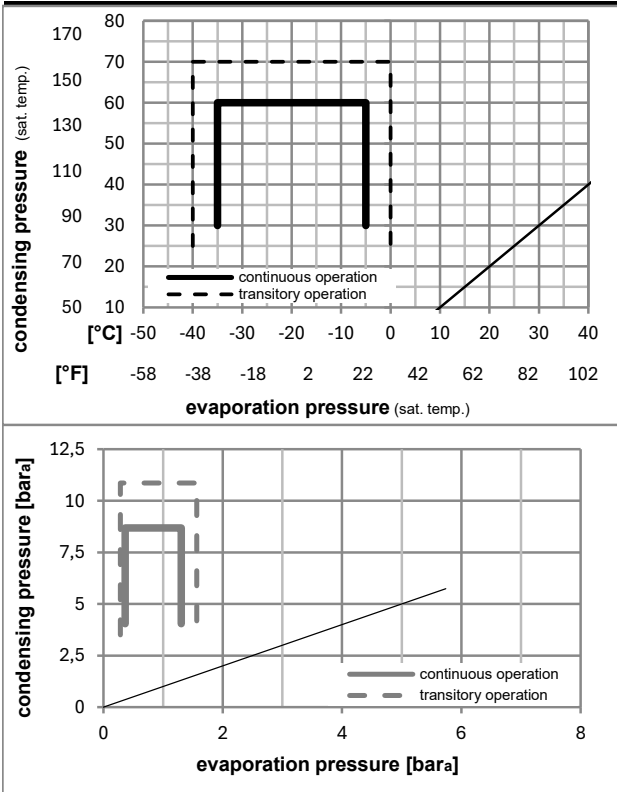


Ambient/ machine room temperatures minimum /maximum

| | |
|---------------------------------|------------------------|
| Ambient temperature range: | 10 - 43°C / 50 - 110°F |
| Machine room temperature range: | 10 - 48°C / 50 - 119°F |
| Compressor cooling: | static |



Operation pressure range



Components

| | |
|-------------------------------|----------|
| . terminal board (PTC, 4.8mm) | 15163500 |
| . run capacitor (4μF, 4.8mm) | 11261700 |
| b cover terminal board | 10636401 |
| . cable clamp | 11341000 |
| . screw - uni6954 | 10636000 |
| . screw - uni6954 | 10636200 |

Alternative components

| | |
|-------------------------------|----------|
| . terminal board (PTC, 6.3mm) | 15279300 |
| . run capacitor (4μF, 6.3mm) | 15186801 |
| . screw uni en iso 4757 | 10641201 |

Model

Designation **HXK95AA** **220-240V/50Hz** Conf. 1 Sales code: **16348100**

Optimization + standard conditions

R600a, 220V/50Hz, RSCR, static, VDE

| | | Evaporating pressure (saturation temperature) | | | | Condensing pressure (saturation temperature) | | | Return gas temp. | | Liquid temp. | | Cooling capacity | | | COP | EER | Power consumption | | Current consumption | | Ref. mass flow | |
|------|------|---|------|------|------|--|---------|----------|------------------|----------|--------------|------|------------------|--------|--|-----|-----|-------------------|---|---------------------|--|----------------|--|
| | | pe | pc | RGT | Tliq | [W] | [Btu/h] | [kcal/h] | [W/W] | [Btu/Wh] | [kcal/Wh] | [W] | [A] | [kg/h] | | | P1 | I | m | | | | |
| [°C] | [°F] | [°C] | [°F] | [°C] | [°C] | | | | | | | | | | | | | | | | | | |
| -23 | -10 | 54 | 130 | 32 | 90 | 171,0 | 584 | 147,2 | 1,91 | 6,52 | 1,64 | 89,5 | 0,40 | 1,84 | | | | | | | | ASHRAE LBP | |
| -25 | -13 | 55 | 131 | 32 | 90 | 128,6 | 439 | 110,7 | 1,50 | 5,13 | 1,29 | 85,6 | 0,39 | 1,68 | | | | | | | | cecomaf LBP | |
| -35 | -31 | 40 | 104 | 20 | 68 | 87,8 | 300 | 75,5 | 1,42 | 4,87 | 1,23 | 61,6 | 0,31 | 1,07 | | | | | | | | EN12900 LBP | |
| -23 | -10 | 49 | 120 | 4,4 | 40 | 139,1 | 475 | 119,8 | 1,59 | 5,42 | 1,37 | 87,7 | 0,39 | 2,03 | | | | | | | | ARI540 LBP | |
| -23 | -10 | 41 | 105 | 32 | 90 | 184,2 | 629 | 158,5 | 2,16 | 7,36 | 1,86 | 85,4 | 0,38 | 1,98 | | | | | | | | AHAM LBP | |
| -35 | -31 | 45 | 113 | 32 | 90 | 84,5 | 288 | 72,7 | 1,36 | 4,63 | 1,17 | 62,3 | 0,31 | 1,00 | | | | | | | | opt | |

Performance tables

R600a, 220V/50Hz, RSCR, static, VDE

| | pe | | Cooling capacity | | | COP | EER | P1 | I | m | |
|------------------|------|------|------------------|---------|----------|-------|----------|-----------|-------|------|--------|
| | [°C] | [°F] | [W] | [Btu/h] | [kcal/h] | [W/W] | [Btu/Wh] | [kcal/Wh] | [W] | [A] | [kg/h] |
| [°C / °F] | -35 | -31 | 84,5 | 288 | 72,7 | 1,36 | 4,63 | 1,17 | 62,3 | 0,31 | 1,00 |
| cond. pressure | -30 | -22 | 113,9 | 389 | 98,0 | 1,58 | 5,40 | 1,36 | 72,1 | 0,34 | 1,35 |
| pc= 45/113 | -25 | -13 | 149,1 | 509 | 128,4 | 1,80 | 6,15 | 1,55 | 82,8 | 0,37 | 1,78 |
| return gas temp. | -23 | -10 | 162,4 | 555 | 139,8 | 1,88 | 6,41 | 1,61 | 86,6 | 0,38 | 1,93 |
| RGT= 32/90 | -20 | -4 | 190,0 | 649 | 163,5 | 2,02 | 6,90 | 1,74 | 94,0 | 0,41 | 2,27 |
| liquid temp | -15 | 5 | 236,4 | 807 | 203,5 | 2,24 | 7,65 | 1,93 | 105,5 | 0,44 | 2,82 |
| Tliq= 45/113 | -5 | 23 | 345,3 | 1179 | 297,2 | 2,70 | 9,21 | 2,32 | 128,0 | 0,55 | 4,15 |
| [°C / °F] | -35 | -31 | 72,9 | 249 | 62,7 | 1,14 | 3,89 | 0,98 | 64,0 | 0,32 | 0,95 |
| cond. pressure | -30 | -22 | 97,7 | 334 | 84,1 | 1,32 | 4,50 | 1,13 | 74,1 | 0,35 | 1,27 |
| pc= 55/131 | -25 | -13 | 128,6 | 439 | 110,7 | 1,50 | 5,13 | 1,29 | 85,6 | 0,39 | 1,68 |
| return gas temp | -23 | -10 | 140,5 | 480 | 120,9 | 1,56 | 5,34 | 1,35 | 89,8 | 0,40 | 1,83 |
| RGT= 32/90 | -20 | -4 | 165,6 | 565 | 142,5 | 1,68 | 5,75 | 1,45 | 98,3 | 0,43 | 2,16 |
| liquid temp | -15 | 5 | 208,5 | 712 | 179,4 | 1,87 | 6,37 | 1,61 | 111,8 | 0,47 | 2,73 |
| Tliq= 55/131 | -5 | 23 | 311,6 | 1064 | 268,2 | 2,22 | 7,59 | 1,91 | 140,2 | 0,59 | 4,10 |