

Model

Designation	HZK13AA	220-240V/50Hz 1~	Sales code:	16513000
-------------	----------------	-------------------------	-------------	-----------------

Compressor design

Oil type	Mineral	Refrigerant(s)	R600a
Oil viscosity	4,6cSt	Displacement	12,5cm ³ / 0,76cu.in
Oil quantity	162cm ³ / 5,5fl.oz	Compressors on pallet	100
Refr. charge - tech. limit	150g / 5,3oz		
Free gas volume comp.	1620cm ³ / 54,8fl.oz		
Weight	9,6kg / 21,2lbs		
Motor protection	external		
Winding resistance main	11,3Ω (at 25°C)		
Winding resistance aux	11,9Ω (at 25°C)		
Max. winding temp.	130°C / 266°F		
Max. discharge temp.	120°C / 248°F		



General - Configurations with HZK13AA

	Conf. 1
Motor configuration	eRSCR
Power supply (nominal)	220-240V/50Hz
Number of phases	1
Voltage range	198-254V
Approvals	VDE
Starting torque	LST
Note	- / -

Applications with HZK13AA

	Conf. 1
Refrigerant	R600a
Application	LBP
System cooling	static
Hot gas defrost	-/-
Long interval pull down	-/-

Electrical data - Configurations with HZK13AA

	Conf. 1
Starting device type	e-PTC
Run capacitor	4μF
Start capacitor	-/-
LRA (locked rotor amps / 4s/ U(N))	7,5A
RLA (rated load amps / 1s/ U(N))	1,1A
Cut in current (U(N))	14,3A

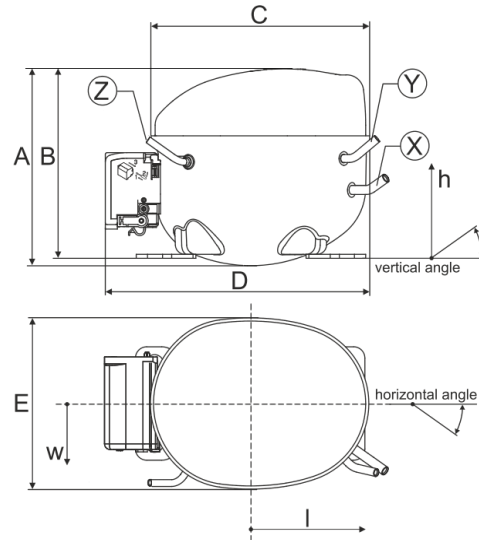
Model

Designation	HZK13AA	220-240V/50Hz 1~	Sales code:	16513000
-------------	----------------	------------------	-------------	-----------------

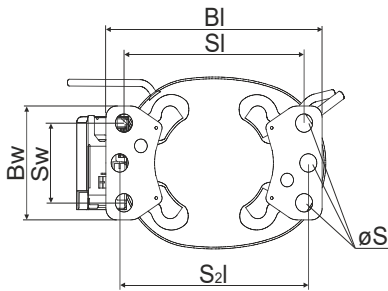
Compressor dimensions

Housing	A Height	174mm / 6,85in
	B Height	167mm / 6,57in
	C Length shell	194mm / 7,64in
	D Length w. cover	238mm / 9,37in
	E Width	151mm / 5,94in

Connectors	Suction	Discharge	Process	
	X	Y	Z	
Diameter [mm]	øi 6,1-6,3	øi 5,1-5,2	øi 6,1-6,3	
(i:inside, o:outside) [in]	øi 0,24-0,25	øi 0,2-0,2	øi 0,24-0,25	
Material	copper	copper	copper	
Horizontal angle	±2° 45°	13°	0°	
Vertical angle	±2° 35°	40°	145°	
Position l/h/w	[mm]	120/72/62	112/106/62	-86/102/70
	[in]	4,7/2,8/2,4	4,4/4,2/2,4	-3,4/4/2,8
Straight tube l.	[mm]	14	14	14
	[in]	0,5	0,5	0,5

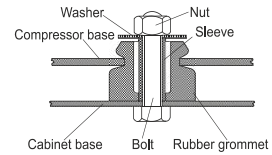


Compressor fixation

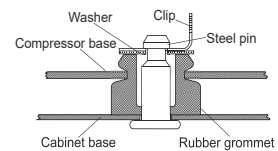


Baseplate	[mm]	[inch]
BI	204	8.03
Bw	100	3.94
Small holes		
SI	170	6.7
Sw	70	2.76
S2l	178	7
øS	ø 16	ø 0.63

Bolt joint



Snap-on



Mounting accessories

	one comp.	multi pack
Bolt joint M6 ø16mm	118-1917	118-1918
Bolt joint ø1/4" ø16mm	118-1946	
Snap-on ø7,3 ø16mm	118-1947	118-1919

Application notes

Provision for PE Grounding is located at the PE Stamp on the compressor

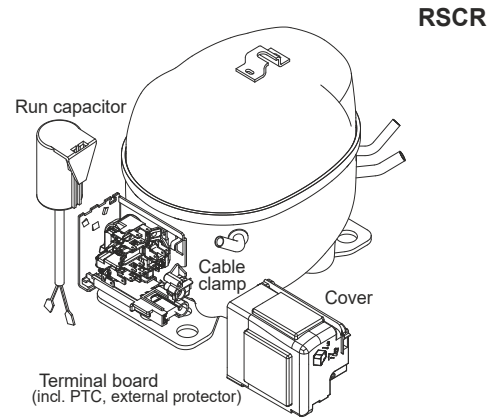
Model

Designation	HZK13AA	220-240V/50Hz	Conf. 1	Sales code:	16513000
-------------	----------------	----------------------	----------------	-------------	-----------------

Configuration

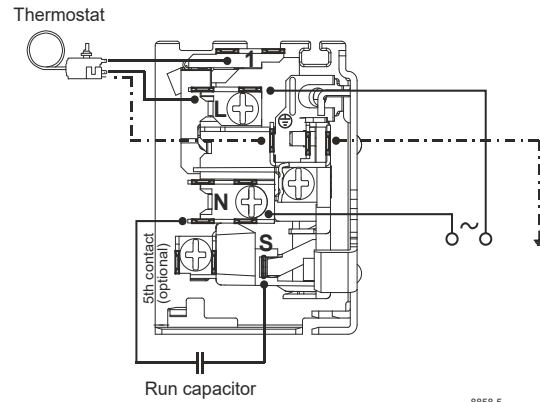
Motor configuration	eRSCR
Power supply (nominal)	220-240V/50Hz 1~
Refrigerant	R600a
Application	LBP
Voltage range	198-254V
Starting torque	LST
Approvals	VDE

Electrical accessories / wiring diagram

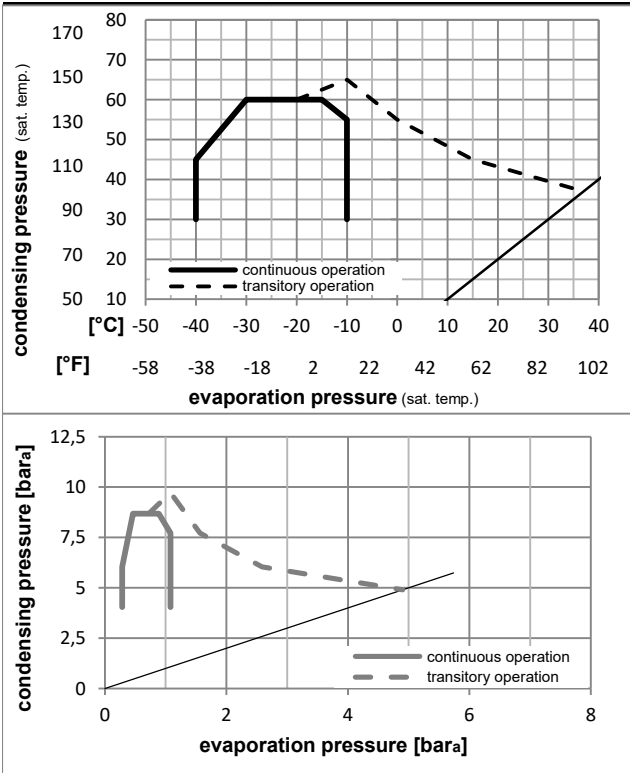


Ambient/ machine room temperatures minimum /maximum

Ambient temperature range:	10 - 43°C / 50 - 110°F
Machine room temperature range:	10 - 48°C / 50 - 119°F
Compressor cooling:	static



Operation pressure range



Components

terminal board (e-PTC, 4.8mm)	15541400
run capacitor (4μF, 4.8mm)	11261700
b, d cover + clamp + screws(5VA-compl.)	103N0600

Alternative components

b, d 100x cover + clamp + screws(5VA)	103N2060
b, d cover + clamp + screws(5VA) in bag	103N1060

Model

Designation **HZK13AA** **220-240V/50Hz** Conf. 1 Sales code: **16513000**

Optimization + standard conditions

R600a, 220V/50Hz, eRSCR, static, VDE

	Evaporating pressure (saturation temperature)				Cooling capacity			COP	EER		Power consumption			
	Condensing pressure (saturation temperature)				Return gas temp.						Current consumption			Ref. mass flow
	pe	pc	RGT	Tliq	[W]	[Btu/h]	[kcal/h]	[W/W]	[Btu/Wh]	[kcal/Wh]	P1	I	m	
	[°C]	[°C]	[°C]	[°C]	[W]	[Btu/h]	[kcal/h]	[W/W]	[Btu/Wh]	[kcal/Wh]	[W]	[A]	[kg/h]	
ASHRAE LBP	-23	54	32	32	235,1	803	202,3	1,86	6,37	1,60	126,1	0,80	2,52	
	[°F]	[°F]	[°F]	[°F]										
	-10	130	90	90										
cecomaf LBP	-25	55	32	55	176,7	603	152,0	1,46	4,99	1,26	121,0	0,78	2,30	
	[°F]	[°F]	[°F]	[°F]										
	-13	131	90	131										
EN12900 LBP	-35	40	20	40	119,9	409	103,2	1,43	4,87	1,23	84,1	0,59	1,46	
	[°F]	[°F]	[°F]	[°F]										
	-31	104	68	104										
ARI540 LBP	-23	49	4,4	49	189,9	649	163,4	1,56	5,32	1,34	122,0	0,78	2,77	
	[°F]	[°F]	[°F]	[°F]										
	-10	120	40	120										
AHAM LBP	-23	41	32	32	246,5	842	212,1	2,14	7,29	1,84	115,4	0,75	2,65	
	[°F]	[°F]	[°F]	[°F]										
	-10	105	90	90										
opt	-35	45	32	45	114,7	392	98,7	1,32	4,51	1,14	87,0	0,60	1,36	
	[°F]	[°F]	[°F]	[°F]										
	-31	113	90	113										

Performance tables

R600a, 220V/50Hz, eRSCR, static, VDE

	pe		Cooling capacity			COP	EER	P1	I	m	
	[°C]	[°F]	[W]	[Btu/h]	[kcal/h]	[W/W]	[Btu/Wh]	[kcal/Wh]	[W]	[A]	[kg/h]
[°C / °F]	-40	-40	80,4	275	69,2	1,04	3,57	0,90	77,0	0,54	0,95
cond. pressure	-35	-31	114,7	392	98,7	1,32	4,51	1,14	87,0	0,60	1,36
pc= 45/113	-30	-22	155,1	530	133,5	1,56	5,33	1,34	99,5	0,67	1,84
return gas temp.	-25	-13	202,3	691	174,1	1,78	6,07	1,53	113,9	0,74	2,41
RGT= 32/90	-20	-4	256,8	877	221,0	1,99	6,78	1,71	129,4	0,82	3,06
liquid temp	-15	5	319,4	1091	274,8	2,20	7,51	1,89	145,2	0,89	3,82
Tliq= 45/113	-10	14	390,5	1334	336,0	2,43	8,30	2,09	160,6	0,96	4,67
[°C / °F]	-40	-40	63,2	216	54,4	0,74	2,52	0,63	85,7	0,59	0,82
cond. pressure	-35	-31	94,9	324	81,7	1,01	3,45	0,87	93,9	0,64	1,24
pc= 55/131	-30	-22	132,6	453	114,1	1,25	4,28	1,08	105,9	0,70	1,73
return gas temp	-25	-13	176,7	603	152,0	1,46	4,99	1,26	121,0	0,78	2,30
RGT= 32/90	-20	-4	227,9	778	196,1	1,65	5,62	1,42	138,4	0,86	2,98
liquid temp	-15	5	286,8	979	246,8	1,82	6,22	1,57	157,3	0,94	3,76
Tliq= 55/131	-10	14	354,1	1209	304,7	2,00	6,83	1,72	177,1	1,03	4,65