

Model

Designation	KLF7.7CNT	200-240V/50Hz 1~ 208-230V/60Hz 1~	Sales code:	106H2828
-------------	------------------	-----------------------------------	-------------	-----------------

Compressor design

Oil type	Polyolester	Refrigerant(s)	R290
Oil viscosity	19,2cSt	Displacement	7,7cm ³ / 0,47cu.in
Oil quantity	170cm ³ / 5,7fl.oz	Compressors on pallet	100
Refr. charge - tech. limit	200g / 7,1oz		
Free gas volume comp.	1575cm ³ / 53,3fl.oz		
Weight	9,6kg / 21,2lbs		
Motor protection	external		
Winding resistance main	6,4Ω (at 25°C)		
Winding resistance aux	14,8Ω (at 25°C)		
Max. winding temp.	125°C / 257°F		
Max. discharge temp.	130°C / 266°F		



General - Configurations with KLF7.7CNT

	Conf. 1	Conf. 2
Motor configuration	RSCR	RSCR
Power supply (nominal)	200-240V/50Hz	208-230V/60Hz
Number of phases	1	1
Voltage range	187-254V	198-253V
Approvals	UL, CCC, CB	UL, CCC, CB, KC
Starting torque	LST	LST
Note	Electrical equipment is included and pre-assembled to compressor.	

Applications with KLF7.7CNT

	Conf. 1	Conf. 2
Refrigerant	R290	R290
Application	LBP+MBP	LBP+MBP
System cooling	fan 3m/s	fan 3m/s
Hot gas defrost	OK	OK
Long interval pull down	OK	OK

Electrical data - Configurations with KLF7.7CNT

	Conf. 1	Conf. 2
Starting device type	PTC	PTC
Run capacitor	5μF	5μF
Start capacitor	-/-	-/-
LRA (locked rotor amps / 4s/ U(N))	15,8A	15,3A
RLA (rated load amps / 1s/ U(N))	1,9A	2A
Cut in current (U(N))		

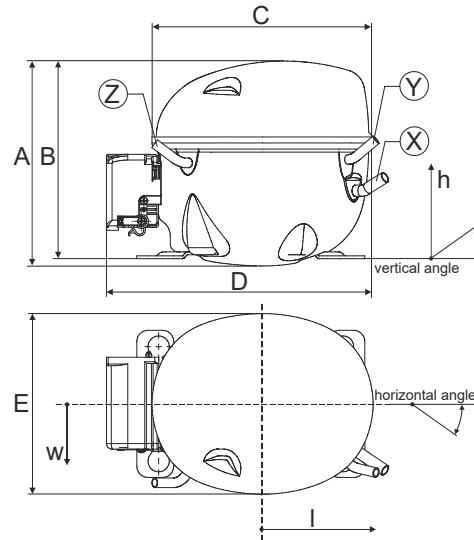
Model

Designation **KLF7.7CNT** 200-240V/50Hz 1~ 208-230V/60Hz 1~ Sales code: **106H2828**

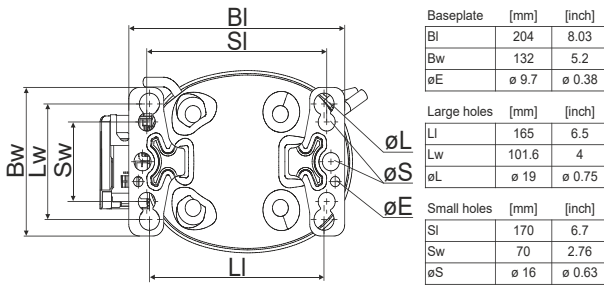
Compressor dimensions

Housing	A Height	182mm / 7,17in
	B Height	175mm / 6,89in
	C Length shell	198mm / 7,8in
	D Length w. cover	238mm / 9,37in
	E Width	160mm / 6,3in

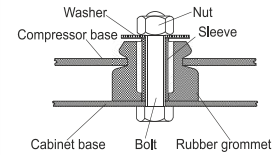
Connectors	Suction	Discharge	Process
	X	Y	Z
Diameter [mm]	øi 8,11-8,29	øi 6,11-6,29	øi 6,11-6,29
(i:inside, o:outside) [in]	øi 0,32-0,33	øi 0,24-0,25	øi 0,24-0,25
Material	copper	copper	copper
Horizontal angle	±2° 35°	13°	0°
Vertical angle	±2° 30°	40°	145°
Position l/h/w [mm]	119/73/59	117/107/66	-88/101/71
[in]	4,7/2,9/2,3	4,6/4,2/2,6	-3,5/4/2,8
Straight tube l.	[mm]	14	14
	[in]	0,5	0,5



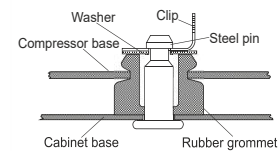
Compressor fixation



Bolt joint



Snap-on



Mounting accessories	one comp.	multi pack
Bolt joint M6 ø16mm	118-1917	118-1918
Bolt joint ø1/4" ø16mm	118-1946	
Bolt joint ø1/4" ø19mm	118-1949	
Snap-on ø7,3 ø16mm	118-1947	118-1919

Application notes

Provision for PE Grounding is located at the PE Stamp on the compressor
Compressor comes on a wooden pallet

Model

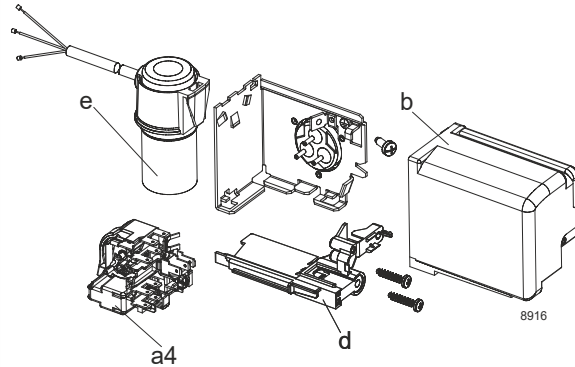
Designation **KLF7.7CNT** **200-240V/50Hz** Conf. 1 Sales code: **106H2828**

Configuration

Motor configuration RSCR
 Power supply (nominal) 200-240V/50Hz 1~
 Refrigerant R290
 Application LBP+MBP
 Voltage range 187-254V
 Starting torque LST
 Approvals UL
 CCC
 CB

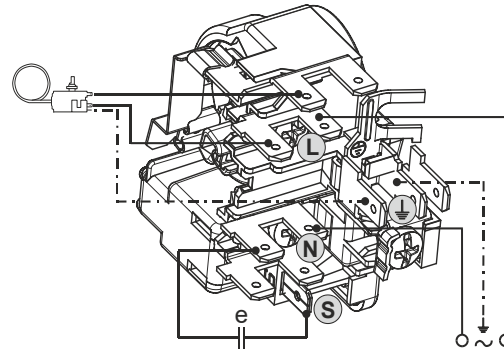
Electrical accessories / wiring diagram

RSCR

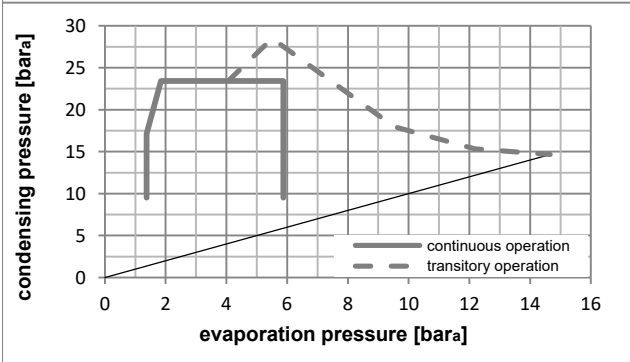
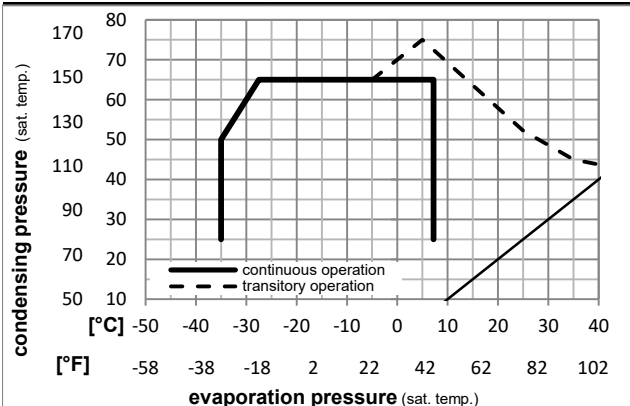


Ambient/ machine room temperatures minimum /maximum

Ambient temperature range: 10 - 43°C / 50 - 110°F
 Machine room temperature range: 10 - 48°C / 50 - 119°F
 Compressor cooling: fan 3m/s



Operation pressure range



Components (incl. and pre. assemb.)

a4	DAS1 (PTC,6.3mm, T0377/L6 - S1)	103N0250
e	run capacitor (5μF, 6,3mm)	117-7155
e1	retaining clamp	103N0535
b, d	cover + clamp + screws(5VA-compl.)	103N0600

Alternative comp.

b, d	100x cover + clamp + screws(5VA)	103N2060
b, d	cover + clamp + screws(5VA) in bag	103N1060

Model

Designation **KLF7.7CNT** **200-240V/50Hz** Conf. 1 Sales code: **106H2828**

Optimization + standard conditions

R290, 220V/50Hz, RSCR, fan 3m/s, UL, CCC, CB

	pe	pc	RGT	Tliq	W	[Btu/h]	[kcal/h]	COP	EER	[kcal/Wh]	P1	I	m	
	[°C]	[°C]	[°C]	[°C]	[W]	[Btu/h]	[kcal/h]	[W/W]	[Btu/Wh]	[kcal/Wh]	[W]	[A]	[kg/h]	
ASHRAE LBP	-23	54	32	32	399,7	1365	344,0	1,62	5,52	1,39	247,4	1,50	4,05	
	[°F]	[°F]	[°F]	[°F]										
	-10	130	90	90										
cecomaf LBP	-25	55	32	55	299,8	1024	258,0	1,25	4,27	1,08	239,7	1,48	3,73	
	[°F]	[°F]	[°F]	[°F]										
	-13	131	90	131										
EN12900 LBP	-35	40	20	40	227,6	777	195,8	1,33	4,55	1,15	170,9	1,29	2,60	
	[°F]	[°F]	[°F]	[°F]										
	-31	104	68	104										
ASHRAE MBP	-7	54	35	46	708,0	2418	609,3	2,14	7,31	1,84	331,0	1,81	8,08	
	[°F]	[°F]	[°F]	[°F]										
	20	130	95	115										
cecomaf MBP	-10	55	32	55	563,5	1925	485,0	1,78	6,07	1,53	317,1	1,76	7,13	
	[°F]	[°F]	[°F]	[°F]										
	14	131	90	131										
EN12900 MBP	-10	45	20	45	620,0	2117	533,5	2,17	7,41	1,87	285,9	1,64	7,61	
	[°F]	[°F]	[°F]	[°F]										
	14	113	68	113										

Performance tables

R290, 220V/50Hz, RSCR, fan 3m/s, UL, CCC, CB

	pe	Cond. pressure	Cooling capacity	COP	EER	P1	I	m			
	[°C]	[°F]	[W]	[Btu/h]	[kcal/h]	[W/W]	[Btu/Wh]	[kcal/Wh]	[W]	[A]	[kg/h]
[°C / °F]	-35	-31	219,9	751	189,3	1,23	4,19	1,06	179,3	1,31	2,46
cond. pressure	-25	-13	348,7	1191	300,1	1,54	5,27	1,33	225,9	1,44	3,93
pc= 45/113	-15	5	531,4	1815	457,3	1,99	6,78	1,71	267,5	1,57	6,05
return gas temp.	-10	14	645,4	2204	555,5	2,26	7,71	1,94	285,9	1,64	7,38
RGT= 32/90	-5	23	775,9	2650	667,7	2,57	8,76	2,21	302,4	1,70	8,93
liquid temp	0	32	923,8	3155	795,0	2,92	9,96	2,51	316,7	1,76	10,71
Tliq= 45/113	7,2	45	1169,3	3993	1006,3	3,51	11,99	3,02	333,1	1,82	13,74
[°C / °F]	-35	-31	182,2	622	156,8	0,97	3,33	0,84	186,9	1,32	2,25
cond. pressure	-25	-13	299,8	1024	258,0	1,25	4,27	1,08	239,7	1,48	3,73
pc= 55/131	-15	5	462,6	1580	398,1	1,59	5,41	1,36	291,8	1,66	5,82
return gas temp	-10	14	563,5	1925	485,0	1,78	6,07	1,53	317,1	1,76	7,13
RGT= 32/90	-5	23	678,7	2318	584,1	1,99	6,79	1,71	341,6	1,85	8,65
liquid temp	0	32	809,1	2763	696,3	2,22	7,57	1,91	365,0	1,94	10,39
Tliq= 55/131	7,2	45	1025,7	3503	882,8	2,59	8,84	2,23	396,4	2,07	13,36

Model

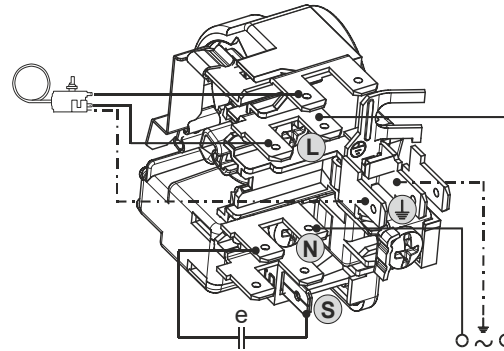
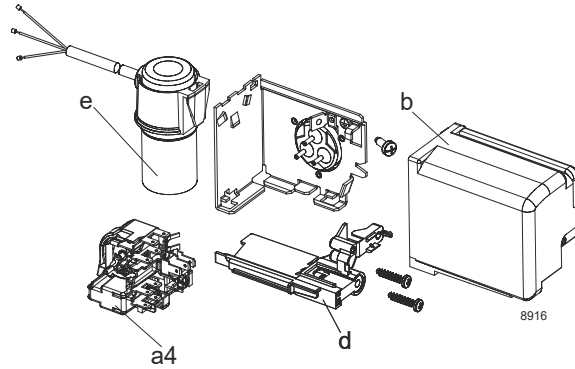
Designation **KLF7.7CNT** **208-230V/60Hz** Conf. 2 Sales code: **106H2828**

Configuration

Motor configuration RSCR
 Power supply (nominal) 208-230V/60Hz 1~
 Refrigerant R290
 Application LBP+MBP
 Voltage range 198-253V
 Starting torque LST
 Approvals UL
 CCC
 CB
 KC

Electrical accessories / wiring diagram

RSCR



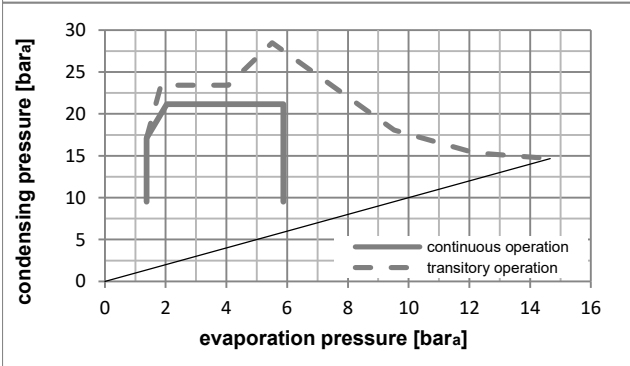
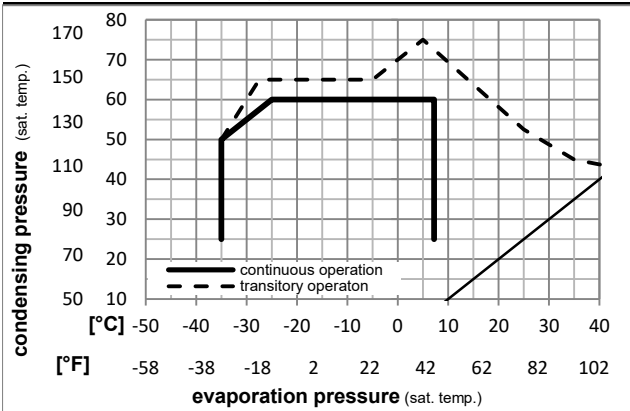
Ambient/ machine room temperatures minimum /maximum

Ambient temperature range: 10 - 43°C / 50 - 110°F

Machine room temperature range: 10 - 48°C / 50 - 119°F

Compressor cooling: fan 3m/s

Operation pressure range



Components (incl. and pre. assemb.)

a4	DAS1 (PTC,6.3mm, T0377/L6 - S1)	103N0250
e	run capacitor (5μF, 6,3mm)	117-7155
e1	retaining clamp	103N0535
b, d	cover + clamp + screws(5VA-compl.)	103N0600

Alternative comp.

b, d	100x cover + clamp + screws(5VA)	103N2060
b, d	cover + clamp + screws(5VA) in bag	103N1060

Model

Designation **KLF7.7CNT** **208-230V/60Hz** Conf. 2 Sales code: **106H2828**

Optimization + standard conditions

R290, 230V/60Hz, RSCR, fan 3m/s, UL, CCC, CB, KC

	Evaporating pressure (saturation temperature)				Condensing pressure (saturation temperature)			COP	EER	P1	Power consumption		Ref. mass flow	
	pe	pc	RGT	Tliq	[W]	[Btu/h]	[kcal/h]				I	m		
	[°C]	[°F]	[°C]	[°F]	[W]	[Btu/h]	[kcal/h]	[W/W]	[Btu/Wh]	[kcal/Wh]	[W]	[A]	[kg/h]	
ASHRAE LBP	-23	54	32	32	489,7	1672	421,4	1,72	5,87	1,48	284,7	1,73	4,96	
	-10	130	90	90										
cecomaf LBP	-25	55	32	55	368,7	1259	317,3	1,34	4,58	1,15	274,9	1,70	4,59	
	-13	131	90	131										
EN12900 LBP	-35	40	20	40	272,8	932	234,8	1,33	4,53	1,14	205,7	1,48	3,12	
	-31	104	68	104										
ASHRAE MBP	-7	54	35	46	845,4	2887	727,5	2,20	7,53	1,90	383,6	2,09	9,64	
	20	130	95	115										
cecomaf MBP	-10	55	32	55	674,9	2305	580,8	1,84	6,28	1,58	366,9	2,03	8,54	
	14	131	90	131										
EN12900 MBP	-10	45	20	45	741,5	2532	638,1	2,22	7,59	1,91	333,4	1,90	9,10	
	14	113	68	113										

Performance tables

R290, 230V/60Hz, RSCR, fan 3m/s, UL, CCC, CB, KC

	pe		Cooling capacity			COP	EER	P1	I	m	
	[°C]	[°F]	[W]	[Btu/h]	[kcal/h]						
[°C / °F]	-35	-31	263,7	901	226,9	1,26	4,29	1,08	209,7	1,50	2,95
cond. pressure	-25	-13	425,2	1452	366,0	1,62	5,52	1,39	263,1	1,66	4,80
pc= 45/113	-15	5	639,6	2184	550,5	2,05	7,01	1,77	311,6	1,82	7,28
return gas temp.	-10	14	771,9	2636	664,3	2,32	7,91	1,99	333,4	1,90	8,83
RGT= 32/90	-5	23	923,7	3155	795,0	2,61	8,93	2,25	353,3	1,98	10,64
liquid temp	0	32	1097,2	3747	944,3	2,96	10,10	2,55	370,9	2,04	12,73
Tliq= 45/113	7,2	45	1389,4	4745	1195,7	3,54	12,10	3,05	392,0	2,13	16,32
[°C / °F]	-35	-31	224,9	768	193,5	1,07	3,65	0,92	210,2	1,49	2,78
cond. pressure	-25	-13	368,7	1259	317,3	1,34	4,58	1,15	274,9	1,70	4,59
pc= 55/131	-15	5	558,0	1906	480,2	1,65	5,65	1,42	337,2	1,92	7,02
return gas temp	-10	14	674,9	2305	580,8	1,84	6,28	1,58	366,9	2,03	8,54
RGT= 32/90	-5	23	809,6	2765	696,7	2,05	7,00	1,76	395,2	2,14	10,31
liquid temp	0	32	964,0	3292	829,6	2,28	7,80	1,97	422,0	2,25	12,38
Tliq= 55/131	7,2	45	1225,5	4185	1054,7	2,68	9,15	2,31	457,3	2,39	15,97