

## Model

Designation	<b>NLE11MF.2</b>	<b>220-240V/50Hz 1~</b>	Sales code:	<b>105G7101</b>
-------------	------------------	-------------------------	-------------	-----------------

## Compressor design

Oil type	Polyolester	Refrigerant(s)	<b>R134a, R513A</b>
Oil viscosity	19,2cSt	Displacement	11,15cm <sup>3</sup> / 0,68cu.in
Oil quantity	295cm <sup>3</sup> / 10fl.oz	Compressors on pallet	80
Refr. charge - tech. limit	600g / 21,2oz		
Free gas volume comp.	2360cm <sup>3</sup> / 79,8fl.oz		
Weight	10,9kg / 24lbs		
Motor protection	1# internal		
Winding resistance main	8,84Ω (at 25°C)		
Winding resistance aux	19,04Ω (at 25°C)		
Max. winding temp.	125°C / 257°F		
Max. discharge temp.	130°C / 266°F		



## General - Configurations with NLE11MF.2

	<b>Conf. 1</b>	<b>Conf. 2</b>	<b>Conf. 3</b>	<b>Conf. 4</b>	<b>Conf. 5</b>
Motor configuration	CSIR	eRSIR	CSIR	eRSIR	eRSCR
Power supply (nominal)	220-230V/50Hz	220-230V/50Hz	220-240V/50Hz	220-240V/50Hz	220-240V/50Hz
Number of phases	1	1	1	1	1
Voltage range	198-242V	198-242V	198-254V	198-254V	198-254V
Approvals	VDE	VDE	VDE	VDE	VDE
Starting torque	HST	LST	HST	LST	LST
Note	- / -				

## Applications with NLE11MF.2

	<b>Conf. 1</b>	<b>Conf. 2</b>	<b>Conf. 3</b>	<b>Conf. 4</b>	<b>Conf. 5</b>
Refrigerant	R134a	R134a	R134a	R134a	R134a
Application	MBP	MBP	MBP	MBP	MBP
System cooling	fan 3m/s	fan 3m/s	fan 3m/s	fan 3m/s	fan 3m/s
Hot gas defrost	OK	OK	OK	OK	OK
Long interval pull down	OK	OK	OK	OK	OK

## Electrical data - Configurations with NLE11MF.2

	<b>Conf. 1</b>	<b>Conf. 2</b>	<b>Conf. 3</b>	<b>Conf. 4</b>	<b>Conf. 5</b>
Starting device type	relay	e-PTC	relay	e-PTC	e-PTC
Run capacitor	-/-	-/-	-/-	-/-	4μF
Start capacitor	80μF	-/-	80μF	-/-	-/-
LRA (locked rotor amps / 4s/ U(N))	13,12A	11,43A	13,12A	11,43A	11,43A
RLA (rated load amps / 1s/ U(N))	2,29A	2,29A	2,29A	2,29A	2,29A
Cut in current (U(N))	13,12A	15,67A	13,12A	15,67A	15,67A

## Model

Designation	<b>NLE11MF.2</b>	<b>220-240V/50Hz 1~</b>	Sales code:	<b>105G7101</b>
-------------	------------------	-------------------------	-------------	-----------------

## Compressor design

Oil type	Polyolester	Refrigerant(s)	<b>R134a, R513A</b>
Oil viscosity	19,2cSt	Displacement	11,15cm <sup>3</sup> / 0,68cu.in
Oil quantity	295cm <sup>3</sup> / 10fl.oz	Compressors on pallet	80
Refr. charge - tech. limit	600g / 21,2oz		
Free gas volume comp.	2360cm <sup>3</sup> / 79,8fl.oz		
Weight	10,9kg / 24lbs		
Motor protection	1# internal		
Winding resistance main	8,84Ω (at 25°C)		
Winding resistance aux	19,04Ω (at 25°C)		
Max. winding temp.	125°C / 257°F		
Max. discharge temp.	130°C / 266°F		



## General - Configurations with NLE11MF.2

	<b>Conf. 6</b>	<b>Conf. 7</b>	<b>Conf. 8</b>	<b>Conf. 9</b>	<b>Conf. 10</b>
Motor configuration	CSIR	eRSIR	CSIR	eRSIR	eRSCR
Power supply (nominal)	220-230V/50Hz	220-230V/50Hz	220-240V/50Hz	220-240V/50Hz	220-240V/50Hz
Number of phases	1	1	1	1	1
Voltage range	198-242V	198-242V	198-254V	198-254V	198-254V
Approvals	VDE	VDE	VDE	VDE	VDE
Starting torque	HST	LST	HST	LST	LST
Note	- / -				

## Applications with NLE11MF.2

	<b>Conf. 6</b>	<b>Conf. 7</b>	<b>Conf. 8</b>	<b>Conf. 9</b>	<b>Conf. 10</b>
Refrigerant	R513A	R513A	R513A	R513A	R513A
Application	MBP	MBP	MBP	MBP	MBP
System cooling	fan 3m/s	fan 3m/s	fan 3m/s	fan 3m/s	fan 3m/s
Hot gas defrost	OK	OK	OK	OK	OK
Long interval pull down	OK	OK	OK	OK	OK

## Electrical data - Configurations with NLE11MF.2

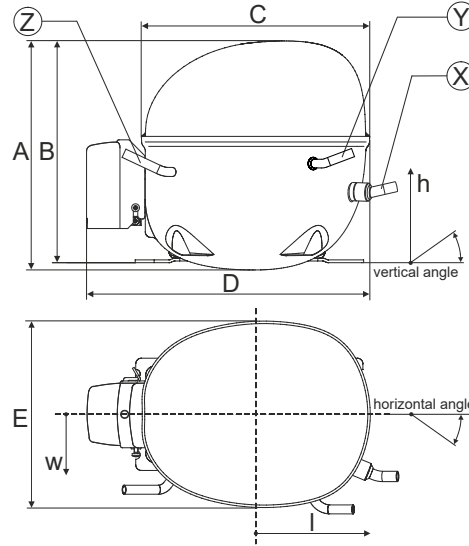
	<b>Conf. 6</b>	<b>Conf. 7</b>	<b>Conf. 8</b>	<b>Conf. 9</b>	<b>Conf. 10</b>
Starting device type	relay	e-PTC	relay	e-PTC	e-PTC
Run capacitor	-/-	-/-	-/-	-/-	4μF
Start capacitor	80μF	-/-	80μF	-/-	-/-
LRA (locked rotor amps / 4s/ U(N))	13,12A	11,43A	13,12A	11,43A	11,43A
RLA (rated load amps / 1s/ U(N))	2,29A	2,29A	2,29A	2,29A	2,29A
Cut in current (U(N))	13,12A	15,67A	13,12A	15,67A	15,67A

## Model

Designation	<b>NLE11MF.2</b>	220-240V/50Hz 1~	Sales code:	<b>105G7101</b>
-------------	------------------	------------------	-------------	-----------------

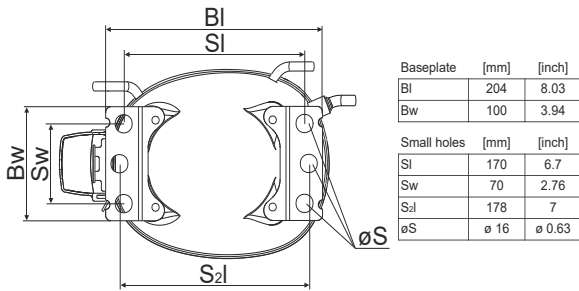
## Compressor dimensions

<b>Housing</b>	A Height	203mm / 7,99in
	B Height	197mm / 7,76in
	C Length shell	205mm / 8,07in
	D Length w. cover	254mm / 10in
	E Width	166mm / 6,54in

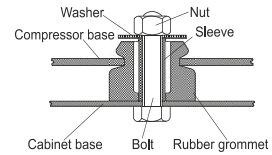


<b>Connectors</b>		<b>Suction</b>	<b>Discharge</b>	<b>Process</b>
		<b>X</b>	<b>Y</b>	<b>Z</b>
Diameter	[mm]	øi 8,11-8,29	øi 6,11-6,29	øi 6,11-6,29
(i:inside, o:outside)	[in]	øi 0,32-0,33	øi 0,24-0,25	øi 0,24-0,25
Material		copper	copper	copper
Horizontal angle	±2°	0°	0°	0°
Vertical angle	±2°	15°	21°	155°
Position l/h/w	[mm]	132/69/57	94/102/81	-109/94/72
	[in]	5,2/2,7/2,2	3,7/4/3,2	-4,3/3,7/2,8
Straight tube l.	[mm]	12	12	12
	[in]	0,5	0,5	0,5

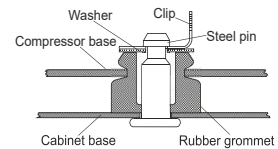
## Compressor fixation



### Bolt joint



### Snap-on



## Mounting accessories

	one comp.	multi pack
Bolt joint   M6   ø16mm	118-1917	118-1918
Bolt joint   ø1/4"   ø16mm	118-1946	
Snap-on   ø7,3   ø16mm	118-1947	118-1919

## Application notes

Provision for PE Grounding is located at the PE Stamp on the compressor

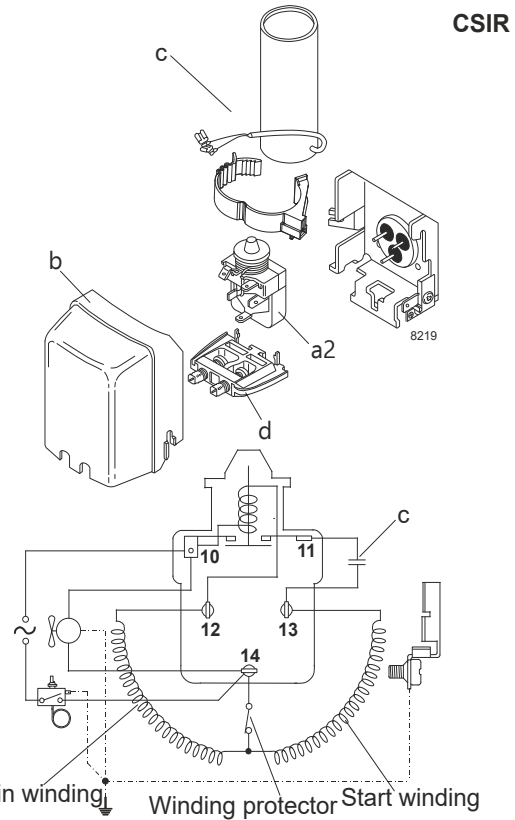
## Model

Designation **NLE11MF.2** **220-230V/50Hz** Conf. 1 Sales code: **105G7101**

## Configuration

Motor configuration CSIR  
 Power supply (nominal) 220-230V/50Hz 1~  
 Refrigerant R134a  
 Application MBP  
 Voltage range 198-242V  
 Starting torque HST  
 Approvals VDE

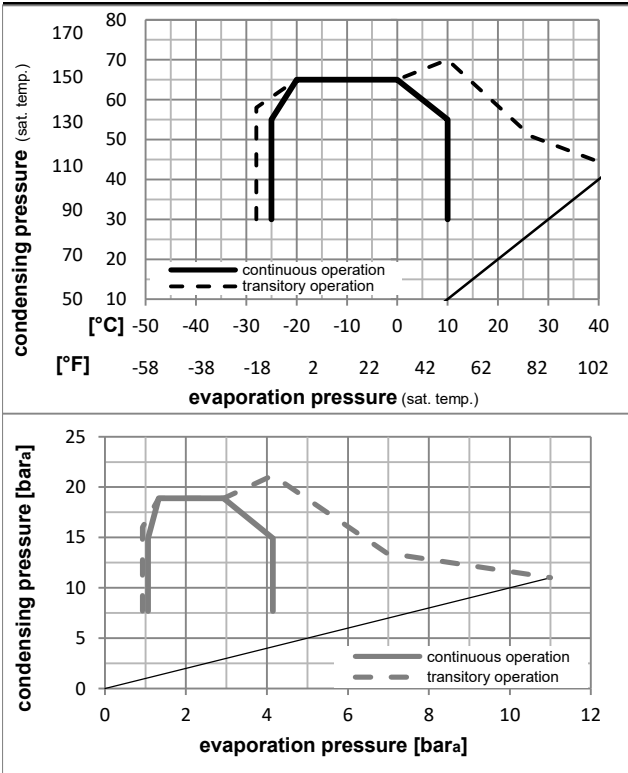
## Electrical accessories / wiring diagram



## Ambient/ machine room temperatures minimum /maximum

Ambient temperature range: 10 - 43°C / 50 - 110°F  
 Machine room temperature range: 10 - 48°C / 50 - 119°F  
 Compressor cooling: fan 3m/s

## Operation pressure range



## Components

a2	assy. relay	117U6003
c	start capacitor (80µF)	117U5015
b	plastic cover	103N2010
d	cord relief	103N1010

## Alternative components

b	plastic cover	103N2011
---	---------------	----------

## Model

Designation **NLE11MF.2** **220-230V/50Hz** Conf. 1 Sales code: **105G7101**

## Optimization + standard conditions

R134a, 220V/50Hz, CSIR, fan 3m/s, VDE

		Evaporating pressure (saturation temperature)				Condensing pressure (saturation temperature)			Return gas temp.			Liquid temp.			Cooling capacity			COP	EER	Power consumption			ASHRAE MBP
		pe	pc	RGT	Tliq	[W]	[Btu/h]	[kcal/h]	[W/W]	[Btu/Wh]	[kcal/Wh]	P1	I	m	[W]	[A]	[kg/h]	cecomaf MBP					
[°C]	[°F]	[°C]	[°F]	[°C]	[°F]																		
-7	20	54	130	35	95	46	115	681,3	2327	586,3	1,88	6,42	1,62	362,6	2,19	14,86							
-10	14	55	131	32	90	55	131	527,2	1800	453,7	1,57	5,38	1,35	334,9	2,11	12,75							
-10	14	45	113	20	68	45	113	600,7	2051	516,9	1,90	6,50	1,64	315,7	2,05	14,06							
-7	20	49	120	18	65	49	120	651,3	2224	560,5	1,87	6,37	1,61	349,1	2,15	16,09							
-10	14	45	113	32	90	45	113	623,2	2128	536,3	1,97	6,74	1,70	315,7	2,05	13,64	opt						
-25	-13	45	113	32	90	45	113	296,7	1013	255,3	1,34	4,58	1,15	221,1	1,78	6,43	opt						

## Performance tables

R134a, 220V/50Hz, CSIR, fan 3m/s, VDE

	pe		Cooling capacity			COP	EER	P1	I	m	
	[°C]	[°F]	[W]	[Btu/h]	[kcal/h]	[W/W]	[Btu/Wh]	[kcal/Wh]	[W]	[A]	[kg/h]
[°C / °F]	-25	-13	296,7	1013	255,3	1,34	4,58	1,15	221,1	1,78	6,43
cond. pressure	-20	-4	386,5	1320	332,7	1,55	5,28	1,33	250,0	1,89	8,40
pc= 45/113	-15	5	494,7	1690	425,8	1,76	5,99	1,51	281,9	1,97	10,78
return gas temp.	-10	14	623,2	2128	536,3	1,97	6,74	1,70	315,7	2,05	13,64
RGT= 32/90	0	32	948,9	3241	816,6	2,46	8,42	2,12	385,0	2,23	20,98
liquid temp	5	41	1150,1	3928	989,8	2,75	9,38	2,36	418,5	2,35	25,60
Tliq= 45/113	10	50	1379,5	4711	1187,2	3,07	10,47	2,64	449,9	2,49	30,95
[°C / °F]	-25	-13	242,2	827	208,4	1,08	3,69	0,93	223,9	1,78	5,79
cond. pressure	-20	-4	319,3	1090	274,8	1,24	4,25	1,07	256,6	1,89	7,66
pc= 55/131	-15	5	413,6	1413	356,0	1,41	4,80	1,21	294,0	2,00	9,96
return gas temp	-10	14	527,2	1800	453,7	1,57	5,38	1,35	334,9	2,11	12,75
RGT= 32/90	0	32	819,9	2800	705,6	1,94	6,61	1,67	423,4	2,39	20,06
liquid temp	5	41	1003,0	3425	863,2	2,14	7,30	1,84	468,9	2,58	24,72
Tliq= 55/131	10	50	1213,2	4143	1044,1	2,36	8,06	2,03	514,0	2,80	30,16

### Model

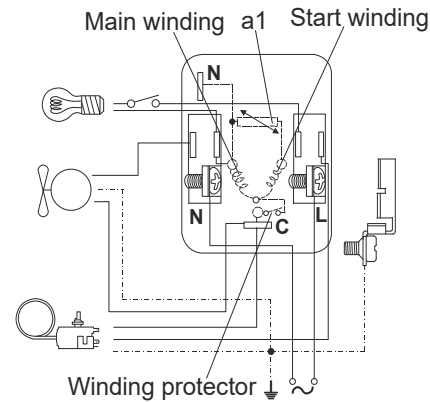
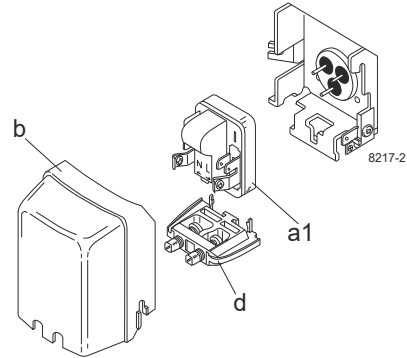
Designation	<b>NLE11MF.2</b>	<b>220-230V/50Hz</b>	<b>Conf. 2</b>	Sales code:	<b>105G7101</b>
-------------	------------------	----------------------	----------------	-------------	-----------------

### Configuration

Motor configuration	eRSIR
Power supply (nominal)	220-230V/50Hz 1~
Refrigerant	R134a
Application	MBP
Voltage range	198-242V
Starting torque	LST
Approvals	VDE

### Electrical accessories / wiring diagram

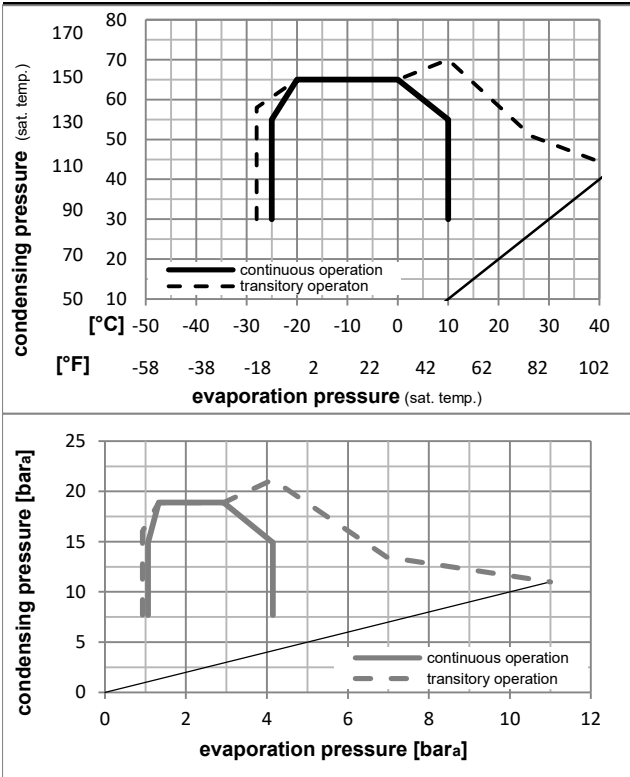
RSIR



### Ambient/ machine room temperatures minimum /maximum

Ambient temperature range:	10 - 43°C / 50 - 110°F
Machine room temperature range:	10 - 48°C / 50 - 119°F
Compressor cooling:	fan 3m/s

### Operation pressure range



### Components

a1	e-PTC starter (220V, 250hm, 4.8mm)	103N0050
b	plastic cover	103N2010
d	cord relief	103N1010

### Alternative components

b	plastic cover	103N2011
---	---------------	----------

## Model

Designation **NLE11MF.2** **220-230V/50Hz** Conf. 2 Sales code: **105G7101**

## Optimization + standard conditions

R134a, 220V/50Hz, eRSIR, fan 3m/s, VDE

		Evaporating pressure (saturation temperature)				Condensing pressure (saturation temperature)			Return gas temp.			Liquid temp.		Cooling capacity			COP	EER		Power consumption			Ref. mass flow
		pe	pc	RGT	Tliq	[W]	[Btu/h]	[kcal/h]	[W/W]	[Btu/Wh]	[kcal/Wh]	[W]	[A]	[kg/h]					P1	I	m		
[°C]	[°F]																						
-7	20	54	130	35	95	46	115	681,3	2327	586,3	1,88	6,42	1,62	362,6	2,19	14,86							ASHRAE MBP
-10	14	55	131	32	90	55	131	527,2	1800	453,7	1,57	5,38	1,35	334,9	2,11	12,75							cecomaf MBP
-10	14	45	113	20	68	45	113	600,7	2051	516,9	1,90	6,50	1,64	315,7	2,05	14,06							EN12900 MBP
-7	20	49	120	18	65	49	120	651,3	2224	560,5	1,87	6,37	1,61	349,1	2,15	16,09							ARI540 MBP
-10	14	45	113	32	90	45	113	623,2	2128	536,3	1,97	6,74	1,70	315,7	2,05	13,64							opt
-25	-13	45	113	32	90	45	113	296,7	1013	255,3	1,34	4,58	1,15	221,1	1,78	6,43							opt

## Performance tables

R134a, 220V/50Hz, eRSIR, fan 3m/s, VDE

	pe		Cooling capacity			COP	EER		P1	I	m
	[°C]	[°F]	[W]	[Btu/h]	[kcal/h]	[W/W]	[Btu/Wh]	[kcal/Wh]	[W]	[A]	[kg/h]
[°C / °F]	-25	-13	296,7	1013	255,3	1,34	4,58	1,15	221,1	1,78	6,43
cond. pressure	-20	-4	386,5	1320	332,7	1,55	5,28	1,33	250,0	1,89	8,40
pc= 45/113	-15	5	494,7	1690	425,8	1,76	5,99	1,51	281,9	1,97	10,78
return gas temp.	-10	14	623,2	2128	536,3	1,97	6,74	1,70	315,7	2,05	13,64
RGT= 32/90	0	32	948,9	3241	816,6	2,46	8,42	2,12	385,0	2,23	20,98
liquid temp	5	41	1150,1	3928	989,8	2,75	9,38	2,36	418,5	2,35	25,60
Tliq= 45/113	10	50	1379,5	4711	1187,2	3,07	10,47	2,64	449,9	2,49	30,95
[°C / °F]	-25	-13	242,2	827	208,4	1,08	3,69	0,93	223,9	1,78	5,79
cond. pressure	-20	-4	319,3	1090	274,8	1,24	4,25	1,07	256,6	1,89	7,66
pc= 55/131	-15	5	413,6	1413	356,0	1,41	4,80	1,21	294,0	2,00	9,96
return gas temp	-10	14	527,2	1800	453,7	1,57	5,38	1,35	334,9	2,11	12,75
RGT= 32/90	0	32	819,9	2800	705,6	1,94	6,61	1,67	423,4	2,39	20,06
liquid temp	5	41	1003,0	3425	863,2	2,14	7,30	1,84	468,9	2,58	24,72
Tliq= 55/131	10	50	1213,2	4143	1044,1	2,36	8,06	2,03	514,0	2,80	30,16

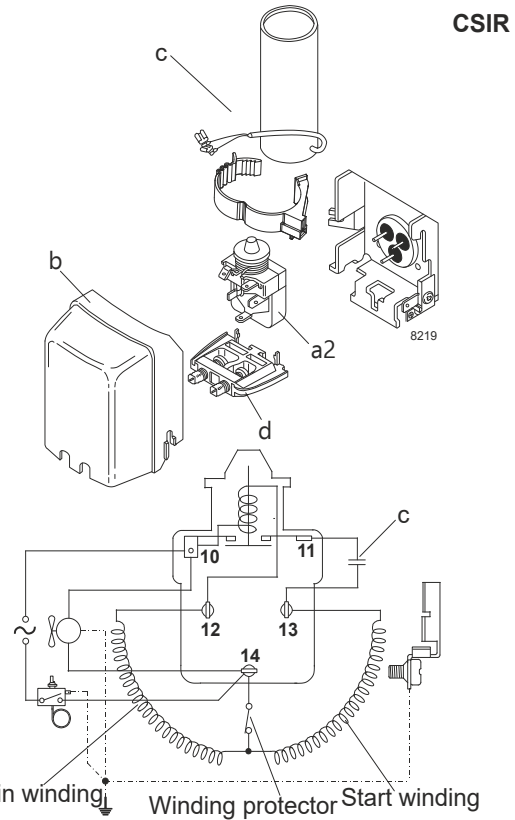
## Model

Designation **NLE11MF.2** **220-240V/50Hz** Conf. 3 Sales code: **105G7101**

## Configuration

Motor configuration CSIR  
 Power supply (nominal) 220-240V/50Hz 1~  
 Refrigerant R134a  
 Application MBP  
 Voltage range 198-254V  
 Starting torque HST  
 Approvals VDE

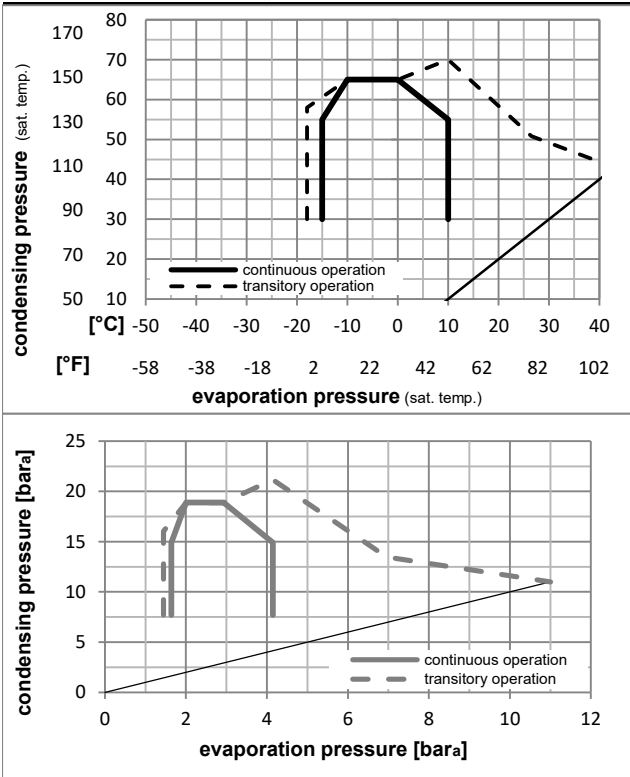
## Electrical accessories / wiring diagram



## Ambient/ machine room temperatures minimum /maximum

Ambient temperature range: 10 - 43°C / 50 - 110°F  
 Machine room temperature range: 10 - 48°C / 50 - 119°F  
 Compressor cooling: fan 3m/s

## Operation pressure range



### Components

a2	assy. relay	117U6003
c	start capacitor (80µF)	117U5015
b	plastic cover	103N2010
d	cord relief	103N1010

### Alternative components

b	plastic cover	103N2011
---	---------------	----------

## Model

Designation **NLE11MF.2** **220-240V/50Hz** Conf. 3 Sales code: **105G7101**

## Optimization + standard conditions

R134a, 220V/50Hz, CSIR, fan 3m/s, VDE

		Evaporating pressure (saturation temperature)				Condensing pressure (saturation temperature)			Return gas temp.			Liquid temp.		Cooling capacity			COP	EER		Power consumption			Ref. mass flow
		pe	pc	RGT	Tliq	[W]	[Btu/h]	[kcal/h]	[W/W]	[Btu/Wh]	[kcal/Wh]	[W]	[A]	[kg/h]									
[°C]	[°F]																						
-7	20	54	130	35	95	46	115	681,3	2327	586,3	1,88	6,42	1,62	362,6	2,19	14,86					ASHRAE MBP		
-10	14	55	131	32	90	55	131	527,2	1800	453,7	1,57	5,38	1,35	334,9	2,11	12,75					cecomaf MBP		
-10	14	45	113	20	68	45	113	600,7	2051	516,9	1,90	6,50	1,64	315,7	2,05	14,06					EN12900 MBP		
-7	20	49	120	18	65	49	120	651,3	2224	560,5	1,87	6,37	1,61	349,1	2,15	16,09					ARI540 MBP		
-10	14	45	113	32	90	45	113	623,2	2128	536,3	1,97	6,74	1,70	315,7	2,05	13,64					opt		
-25	-13	45	113	32	90	45	113	296,7	1013	255,3	1,34	4,58	1,15	221,1	1,78	6,43					opt		

## Performance tables

R134a, 220V/50Hz, CSIR, fan 3m/s, VDE

	pe		Cooling capacity			COP	EER		P1	I	m
	[°C]	[°F]	[W]	[Btu/h]	[kcal/h]	[W/W]	[Btu/Wh]	[kcal/Wh]	[W]	[A]	[kg/h]
[°C / °F]	-15	5	494,7	1690	425,8	1,76	5,99	1,51	281,9	1,97	10,78
cond. pressure	-10	14	623,2	2128	536,3	1,97	6,74	1,70	315,7	2,05	13,64
pc= 45/113	-7	20	720,0	2459	619,7	2,13	7,26	1,83	338,6	2,11	15,81
return gas temp.	0	32	948,9	3241	816,6	2,46	8,42	2,12	385,0	2,23	20,98
RGT= 32/90	5	41	1150,1	3928	989,8	2,75	9,38	2,36	418,5	2,35	25,60
liquid temp	7,2	45	1247,4	4260	1073,5	2,88	9,85	2,48	432,6	2,41	27,86
Tliq= 45/113	10	50	1379,5	4711	1187,2	3,07	10,47	2,64	449,9	2,49	30,95
[°C / °F]	-15	5	413,6	1413	356,0	1,41	4,80	1,21	294,0	2,00	9,96
cond. pressure	-10	14	527,2	1800	453,7	1,57	5,38	1,35	334,9	2,11	12,75
pc= 55/131	-7	20	613,6	2096	528,1	1,69	5,77	1,45	363,4	2,19	14,89
return gas temp	0	32	819,9	2800	705,6	1,94	6,61	1,67	423,4	2,39	20,06
RGT= 32/90	5	41	1003,0	3425	863,2	2,14	7,30	1,84	468,9	2,58	24,72
liquid temp	7,2	45	1092,1	3730	939,8	2,23	7,63	1,92	488,9	2,67	27,01
Tliq= 55/131	10	50	1213,2	4143	1044,1	2,36	8,06	2,03	514,0	2,80	30,16

## Model

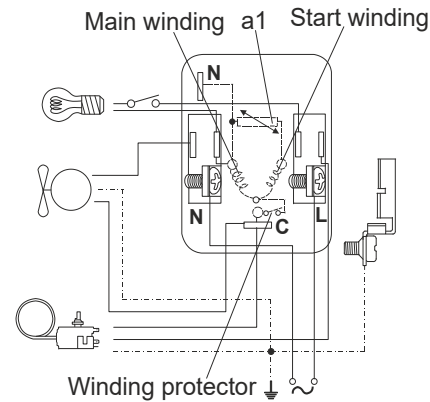
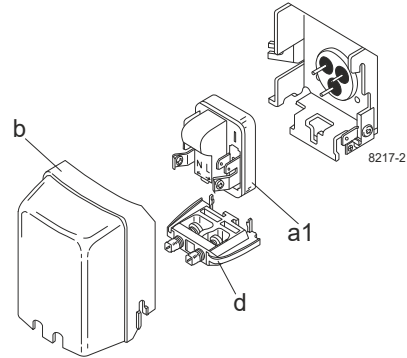
Designation	<b>NLE11MF.2</b>	<b>220-240V/50Hz</b>	<b>Conf. 4</b>	Sales code:	<b>105G7101</b>
-------------	------------------	----------------------	----------------	-------------	-----------------

## Configuration

Motor configuration	eRSIR
Power supply (nominal)	220-240V/50Hz 1~
Refrigerant	R134a
Application	MBP
Voltage range	198-254V
Starting torque	LST
Approvals	VDE

## Electrical accessories / wiring diagram

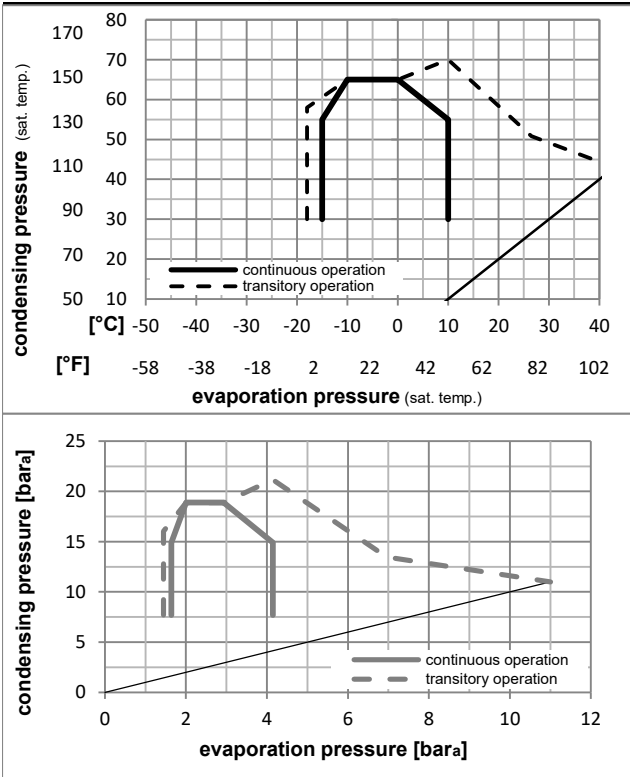
RSIR



## Ambient/ machine room temperatures minimum /maximum

Ambient temperature range:	10 - 43°C / 50 - 110°F
Machine room temperature range:	10 - 48°C / 50 - 119°F
Compressor cooling:	fan 3m/s

## Operation pressure range



## Components

a1	e-PTC starter (220V, 250hm, 4.8mm)	103N0050
b	plastic cover	103N2010
d	cord relief	103N1010

## Alternative components

b	plastic cover	103N2011
---	---------------	----------

## Model

Designation **NLE11MF.2** **220-240V/50Hz** Conf. 4 Sales code: **105G7101**

## Optimization + standard conditions

R134a, 220V/50Hz, eRSIR, fan 3m/s, VDE

		Evaporating pressure (saturation temperature)				Condensing pressure (saturation temperature)			Return gas temp.		Liquid temp.		Cooling capacity			COP	EER	Power consumption			ASHRAE MBP
		pe	pc	RGT	Tliq	[W]	[Btu/h]	[kcal/h]	[W/W]	[Btu/Wh]	[kcal/Wh]	P1	I	m	[W]	[A]	[kg/h]	cecomaf MBP			
[°C]	[°F]																				
-7	20	54	130	35	95	46	115	681,3	2327	586,3	1,88	6,42	1,62	362,6	2,19	14,86					
-10	14	55	131	32	90	55	131	527,2	1800	453,7	1,57	5,38	1,35	334,9	2,11	12,75					
-10	14	45	113	20	68	45	113	600,7	2051	516,9	1,90	6,50	1,64	315,7	2,05	14,06					
-7	20	49	120	18	65	49	120	651,3	2224	560,5	1,87	6,37	1,61	349,1	2,15	16,09					
-10	14	45	113	32	90	45	113	623,2	2128	536,3	1,97	6,74	1,70	315,7	2,05	13,64		opt			
-25	-13	45	113	32	90	45	113	296,7	1013	255,3	1,34	4,58	1,15	221,1	1,78	6,43		opt			

## Performance tables

R134a, 220V/50Hz, eRSIR, fan 3m/s, VDE

	pe		Cooling capacity			COP	EER	P1			I	m
	[°C]	[°F]	[W]	[Btu/h]	[kcal/h]	[W/W]	[Btu/Wh]	[kcal/Wh]	[W]	[A]	[kg/h]	
[°C / °F]	-15	5	494,7	1690	425,8	1,76	5,99	1,51	281,9	1,97	10,78	
cond. pressure	-10	14	623,2	2128	536,3	1,97	6,74	1,70	315,7	2,05	13,64	
pc= 45/113	-7	20	720,0	2459	619,7	2,13	7,26	1,83	338,6	2,11	15,81	
return gas temp.	0	32	948,9	3241	816,6	2,46	8,42	2,12	385,0	2,23	20,98	
RGT= 32/90	5	41	1150,1	3928	989,8	2,75	9,38	2,36	418,5	2,35	25,60	
liquid temp	7,2	45	1247,4	4260	1073,5	2,88	9,85	2,48	432,6	2,41	27,86	
Tliq= 45/113	10	50	1379,5	4711	1187,2	3,07	10,47	2,64	449,9	2,49	30,95	
[°C / °F]	-15	5	413,6	1413	356,0	1,41	4,80	1,21	294,0	2,00	9,96	
cond. pressure	-10	14	527,2	1800	453,7	1,57	5,38	1,35	334,9	2,11	12,75	
pc= 55/131	-7	20	613,6	2096	528,1	1,69	5,77	1,45	363,4	2,19	14,89	
return gas temp	0	32	819,9	2800	705,6	1,94	6,61	1,67	423,4	2,39	20,06	
RGT= 32/90	5	41	1003,0	3425	863,2	2,14	7,30	1,84	468,9	2,58	24,72	
liquid temp	7,2	45	1092,1	3730	939,8	2,23	7,63	1,92	488,9	2,67	27,01	
Tliq= 55/131	10	50	1213,2	4143	1044,1	2,36	8,06	2,03	514,0	2,80	30,16	

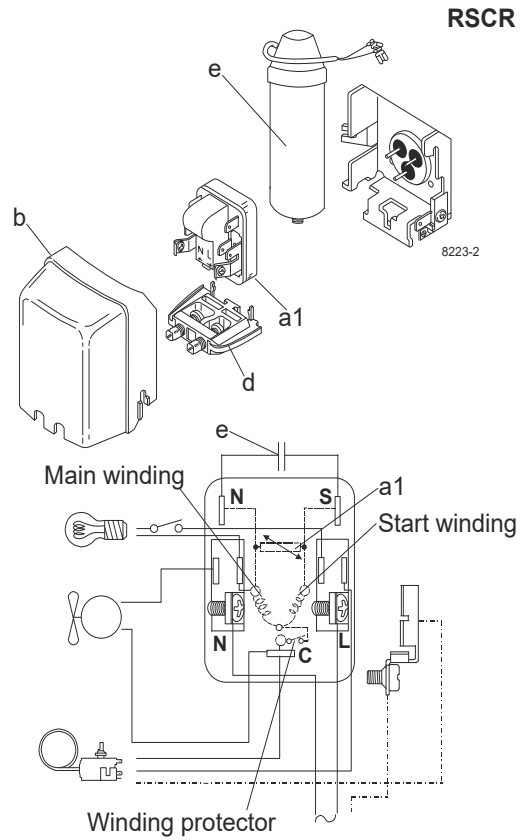
### Model

Designation	<b>NLE11MF.2</b>	<b>220-240V/50Hz</b>	Conf. 5	Sales code:	<b>105G7101</b>
-------------	------------------	----------------------	---------	-------------	-----------------

### Configuration

Motor configuration	eRSCR
Power supply (nominal)	220-240V/50Hz 1~
Refrigerant	R134a
Application	MBP
Voltage range	198-254V
Starting torque	LST
Approvals	VDE

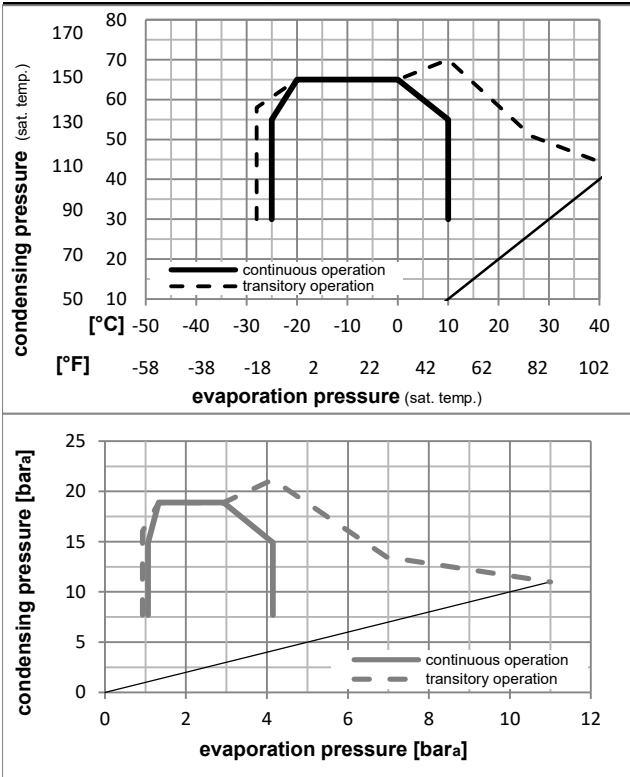
### Electrical accessories / wiring diagram



### Ambient/ machine room temperatures minimum /maximum

Ambient temperature range:	10 - 43°C / 50 - 110°F
Machine room temperature range:	10 - 48°C / 50 - 119°F
Compressor cooling:	fan 3m/s

### Operation pressure range



### Components

a1	e-PTC starter (220V, 250hm, 4.8mm)	103N0050
e	run capacitor (4μF, 4.8mm)	117-7119
b	plastic cover	103N2010
d	cord relief	103N1010
	bracket for run capacitor	117-0300
	screw M4x8mm	117-0301

### Alternative components

b	plastic cover	103N2011
---	---------------	----------

## Model

Designation **NLE11MF.2** **220-240V/50Hz** Conf. 5 Sales code: **105G7101**

## Optimization + standard conditions

R134a, 220V/50Hz, eRSCR, fan 3m/s, VDE

		Evaporating pressure (saturation temperature)				Condensing pressure (saturation temperature)			Return gas temp.			Liquid temp.			Cooling capacity			COP	EER	Power consumption			ASHRAE MBP
		pe	pc	RGT	Tliq	[W]	[Btu/h]	[kcal/h]	[W/W]	[Btu/Wh]	[kcal/Wh]	[W]	I	m	[W]	[A]	[kg/h]	cecomaf MBP					
[°C]	[°F]																						
-7	20	54	130	35	95	46	115	690,3	2357	594,1	2,02	6,91	1,74	341,0	2,06	15,06							
-10	14	55	131	32	90	55	131	534,2	1824	459,7	1,70	5,79	1,46	315,0	1,99	12,92							
-10	14	45	113	20	68	45	113	608,6	2079	523,8	2,05	7,00	1,76	296,9	1,93	14,25							
-7	20	49	120	18	65	49	120	659,9	2254	567,9	2,01	6,86	1,73	328,4	2,02	16,30							
-10	14	45	113	32	90	45	113	631,4	2156	543,4	2,13	7,26	1,83	296,9	1,93	13,82					opt		
-25	-13	45	113	32	90	45	113	300,6	1027	258,7	1,45	4,94	1,24	207,9	1,68	6,51					opt		

## Performance tables

R134a, 220V/50Hz, eRSCR, fan 3m/s, VDE

	pe		Cooling capacity			COP	EER	P1	I	m	
	[°C]	[°F]	[W]	[Btu/h]	[kcal/h]	[W/W]	[Btu/Wh]	[kcal/Wh]	[W]	[A]	[kg/h]
[°C / °F]	-25	-13	300,6	1027	258,7	1,45	4,94	1,24	207,9	1,68	6,51
cond. pressure	-20	-4	391,6	1338	337,1	1,67	5,69	1,43	235,1	1,77	8,51
pc= 45/113	-15	5	501,2	1712	431,4	1,89	6,46	1,63	265,1	1,86	10,93
return gas temp.	-10	14	631,4	2156	543,4	2,13	7,26	1,83	296,9	1,93	13,82
RGT= 32/90	0	32	961,4	3283	827,4	2,66	9,07	2,28	362,1	2,10	21,26
liquid temp	5	41	1165,3	3980	1002,9	2,96	10,11	2,55	393,6	2,21	25,94
Tliq= 45/113	10	50	1397,7	4773	1202,9	3,30	11,28	2,84	423,2	2,34	31,36
[°C / °F]	-25	-13	245,4	838	211,2	1,17	3,98	1,00	210,6	1,68	5,87
cond. pressure	-20	-4	323,5	1105	278,4	1,34	4,58	1,15	241,4	1,78	7,76
pc= 55/131	-15	5	419,1	1431	360,7	1,52	5,18	1,30	276,5	1,88	10,09
return gas temp	-10	14	534,2	1824	459,7	1,70	5,79	1,46	315,0	1,99	12,92
RGT= 32/90	0	32	830,7	2837	714,9	2,09	7,12	1,80	398,2	2,25	20,32
liquid temp	5	41	1016,3	3471	874,6	2,30	7,87	1,98	441,0	2,42	25,04
Tliq= 55/131	10	50	1229,3	4198	1057,9	2,54	8,68	2,19	483,4	2,64	30,56

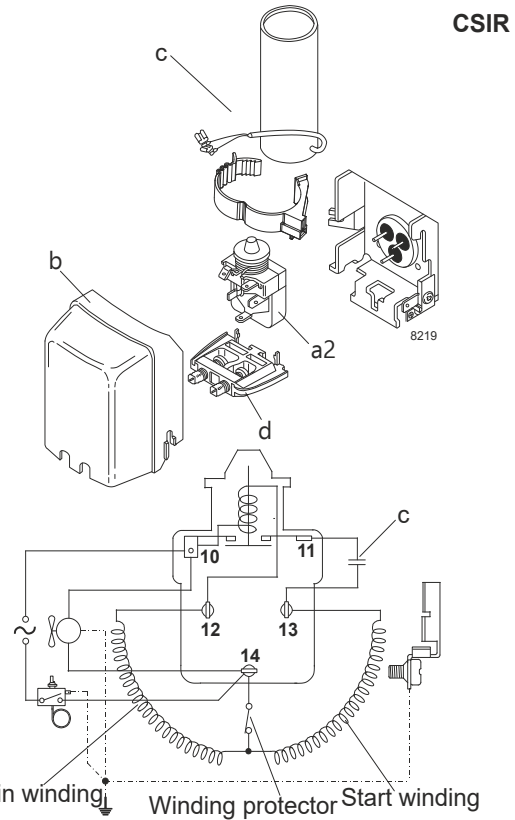
## Model

Designation **NLE11MF.2** **220-230V/50Hz** Conf. 6 Sales code: **105G7101**

## Configuration

Motor configuration CSIR  
 Power supply (nominal) 220-230V/50Hz 1~  
 Refrigerant R513A  
 Application MBP  
 Voltage range 198-242V  
 Starting torque HST  
 Approvals VDE

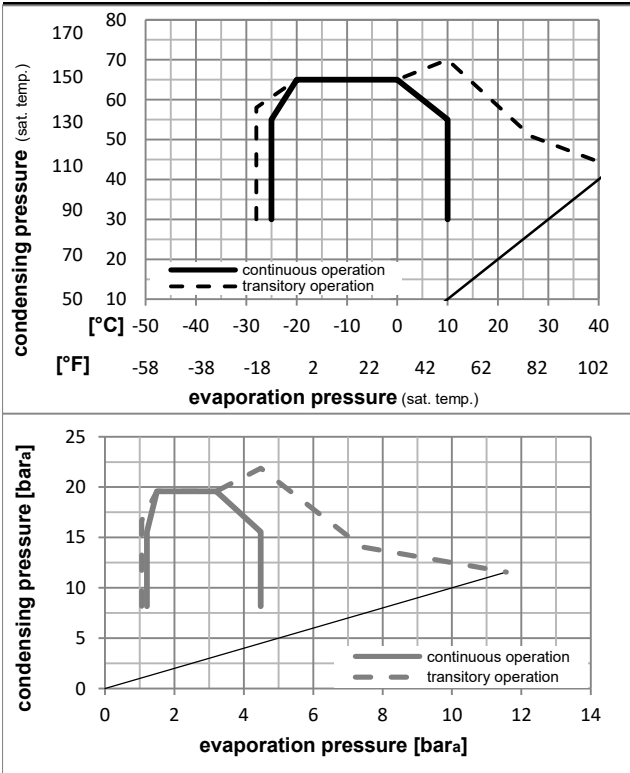
## Electrical accessories / wiring diagram



## Ambient/ machine room temperatures minimum /maximum

Ambient temperature range: 10 - 43°C / 50 - 110°F  
 Machine room temperature range: 10 - 48°C / 50 - 119°F  
 Compressor cooling: fan 3m/s

## Operation pressure range



## Components

a2	assy. relay	117U6003
c	start capacitor (80µF)	117U5015
b	plastic cover	103N2010
d	cord relief	103N1010

## Alternative components

b	plastic cover	103N2011
---	---------------	----------

## Model

Designation **NLE11MF.2** **220-230V/50Hz** Conf. 6 Sales code: **105G7101**

## Optimization + standard conditions

R513A, 220V/50Hz, CSIR, fan 3m/s, VDE

		Evaporating pressure (saturation temperature)				Condensing pressure (saturation temperature)						Power consumption					
		Return gas temp.				Liquid temp.						Current consumption			Ref. mass flow		
		Cooling capacity				COP						EER			P1	I	m
		pe	pc	RGT	Tliq	[W]	[Btu/h]	[kcal/h]	[W/W]	[Btu/Wh]	[kcal/Wh]	[W]	[A]	[kg/h]			
[°C]	[°F]																
[°C]	-7	54	35	46	714,1	2439	614,6	1,86	6,34	1,60	385,0	2,29	17,49	ASHRAE MBP			
[°F]	20	130	95	115													
[°C]	-10	55	32	55	546,2	1865	470,0	1,53	5,23	1,32	356,8	2,19	15,10	cecomaf MBP			
[°F]	14	131	90	131													
[°C]	-10	45	20	45	627,3	2142	539,8	1,87	6,39	1,61	335,5	2,12	16,63	EN12900 MBP			
[°F]	14	113	68	113													
[°C]	-7	49	18	49	671,4	2293	577,8	1,81	6,19	1,56	370,2	2,24	18,92	ARI540 MBP			
[°F]	20	120	65	120													
[°C]	-10	45	32	45	655,9	2240	564,5	1,96	6,68	1,68	335,5	2,12	16,13	opt			
[°F]	14	113	90	113													
[°C]	-25	45	32	45	322,4	1101	277,5	1,35	4,62	1,16	238,5	1,86	7,86	opt			
[°F]	-13	113	90	113													

## Performance tables

R513A, 220V/50Hz, CSIR, fan 3m/s, VDE

	pe		Cooling capacity			COP			EER			P1	I	m
	[°C]	[°F]	[W]	[Btu/h]	[kcal/h]	[W/W]	[Btu/Wh]	[kcal/Wh]	[W]	[A]	[kg/h]			
[°C / °F]	-25	-13	322,4	1101	277,5	1,35	4,62	1,16	238,5	1,86	7,86			
cond. pressure	-20	-4	415,0	1417	357,2	1,55	5,28	1,33	268,3	1,93	10,14			
pc= 45/113	-15	5	525,6	1795	452,3	1,75	5,96	1,50	300,9	2,02	12,88			
return gas temp.	-10	14	655,9	2240	564,5	1,96	6,68	1,68	335,5	2,12	16,13			
RGT= 32/90	0	32	983,2	3358	846,2	2,42	8,28	2,09	405,7	2,36	24,39			
liquid temp	5	41	1183,8	4043	1018,8	2,69	9,20	2,32	439,3	2,48	29,53			
Tliq= 45/113	10	50	1411,3	4820	1214,6	3,00	10,25	2,58	470,3	2,60	35,43			
[°C / °F]	-25	-13	260,5	890	224,2	1,07	3,66	0,92	243,0	1,87	7,13			
cond. pressure	-20	-4	338,4	1156	291,3	1,22	4,18	1,05	276,6	1,95	9,29			
pc= 55/131	-15	5	433,0	1479	372,7	1,38	4,70	1,18	314,9	2,06	11,93			
return gas temp	-10	14	546,2	1865	470,0	1,53	5,23	1,32	356,8	2,19	15,10			
RGT= 32/90	0	32	835,2	2852	718,7	1,87	6,38	1,61	447,1	2,51	23,32			
liquid temp	5	41	1014,6	3465	873,2	2,06	7,03	1,77	493,2	2,69	28,51			
Tliq= 55/131	10	50	1219,8	4166	1049,7	2,26	7,73	1,95	538,6	2,87	34,53			

### Model

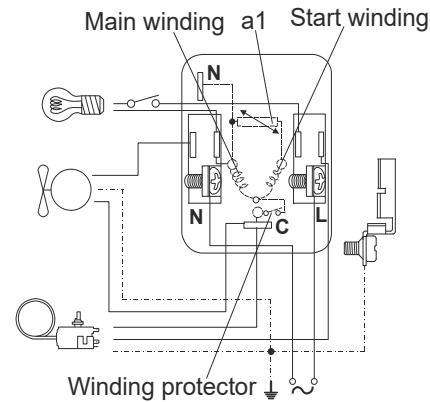
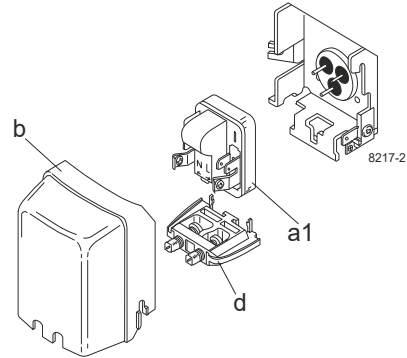
Designation	<b>NLE11MF.2</b>	<b>220-230V/50Hz</b>	<b>Conf. 7</b>	Sales code:	<b>105G7101</b>
-------------	------------------	----------------------	----------------	-------------	-----------------

### Configuration

Motor configuration	eRSIR
Power supply (nominal)	220-230V/50Hz 1~
Refrigerant	R513A
Application	MBP
Voltage range	198-242V
Starting torque	LST
Approvals	VDE

### Electrical accessories / wiring diagram

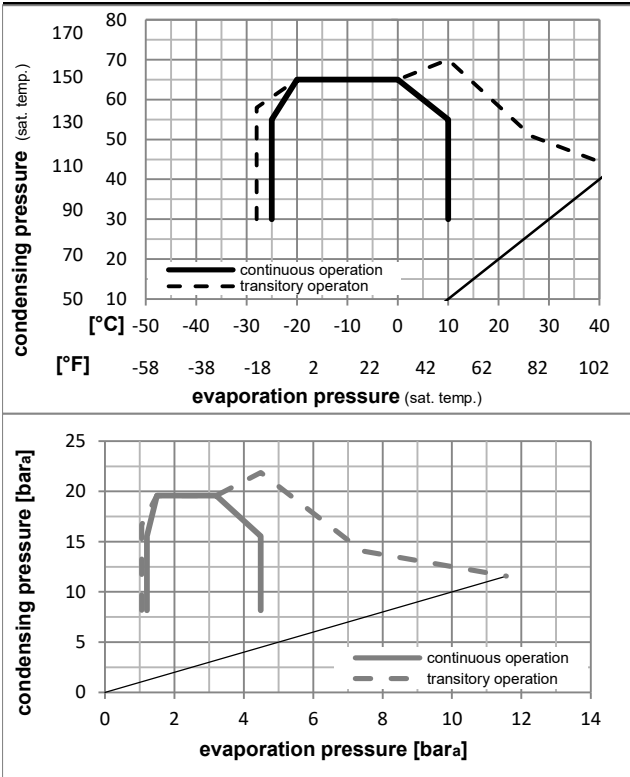
RSIR



### Ambient/ machine room temperatures minimum /maximum

Ambient temperature range:	10 - 43°C / 50 - 110°F
Machine room temperature range:	10 - 48°C / 50 - 119°F
Compressor cooling:	fan 3m/s

### Operation pressure range



### Components

a1	e-PTC starter (220V, 250hm, 4.8mm)	103N0050
b	plastic cover	103N2010
d	cord relief	103N1010

### Alternative components

b	plastic cover	103N2011
---	---------------	----------

## Model

Designation **NLE11MF.2** **220-230V/50Hz** Conf. 7 Sales code: **105G7101**

## Optimization + standard conditions

R513A, 220V/50Hz, eRSIR, fan 3m/s, VDE

		Evaporating pressure (saturation temperature)				Condensing pressure (saturation temperature)			Return gas temp.		Liquid temp.		Cooling capacity			COP	EER	Power consumption			Ref. mass flow m	ASHRAE MBP
		pe	pc	RGT	Tliq	[W]	[Btu/h]	[kcal/h]	[W/W]	[Btu/Wh]	[kcal/Wh]	[W]	I	[A]	[kg/h]							
[°C]	-7	54	35	46	714,1	2439	614,6	1,86	6,34	1,60	385,0	2,29	17,49	ASHRAE MBP								
[°F]	20	130	95	115																		
[°C]	-10	55	32	55	546,2	1865	470,0	1,53	5,23	1,32	356,8	2,19	15,10	cecomaf MBP								
[°F]	14	131	90	131																		
[°C]	-10	45	20	45	627,3	2142	539,8	1,87	6,39	1,61	335,5	2,12	16,63	EN12900 MBP								
[°F]	14	113	68	113																		
[°C]	-7	49	18	49	671,4	2293	577,8	1,81	6,19	1,56	370,2	2,24	18,92	ARI540 MBP								
[°F]	20	120	65	120																		
[°C]	-10	45	32	45	655,9	2240	564,5	1,96	6,68	1,68	335,5	2,12	16,13	opt								
[°F]	14	113	90	113																		
[°C]	-25	45	32	45	322,4	1101	277,5	1,35	4,62	1,16	238,5	1,86	7,86	opt								
[°F]	-13	113	90	113																		

## Performance tables

R513A, 220V/50Hz, eRSIR, fan 3m/s, VDE

	pe		Cooling capacity			COP	EER	P1	I	m	
	[°C]	[°F]	[W]	[Btu/h]	[kcal/h]	[W/W]	[Btu/Wh]	[kcal/Wh]	[W]	[A]	[kg/h]
[°C / °F]	-25	-13	322,4	1101	277,5	1,35	4,62	1,16	238,5	1,86	7,86
cond. pressure	-20	-4	415,0	1417	357,2	1,55	5,28	1,33	268,3	1,93	10,14
pc= 45/113	-15	5	525,6	1795	452,3	1,75	5,96	1,50	300,9	2,02	12,88
return gas temp.	-10	14	655,9	2240	564,5	1,96	6,68	1,68	335,5	2,12	16,13
RGT= 32/90	0	32	983,2	3358	846,2	2,42	8,28	2,09	405,7	2,36	24,39
liquid temp	5	41	1183,8	4043	1018,8	2,69	9,20	2,32	439,3	2,48	29,53
Tliq= 45/113	10	50	1411,3	4820	1214,6	3,00	10,25	2,58	470,3	2,60	35,43
[°C / °F]	-25	-13	260,5	890	224,2	1,07	3,66	0,92	243,0	1,87	7,13
cond. pressure	-20	-4	338,4	1156	291,3	1,22	4,18	1,05	276,6	1,95	9,29
pc= 55/131	-15	5	433,0	1479	372,7	1,38	4,70	1,18	314,9	2,06	11,93
return gas temp	-10	14	546,2	1865	470,0	1,53	5,23	1,32	356,8	2,19	15,10
RGT= 32/90	0	32	835,2	2852	718,7	1,87	6,38	1,61	447,1	2,51	23,32
liquid temp	5	41	1014,6	3465	873,2	2,06	7,03	1,77	493,2	2,69	28,51
Tliq= 55/131	10	50	1219,8	4166	1049,7	2,26	7,73	1,95	538,6	2,87	34,53

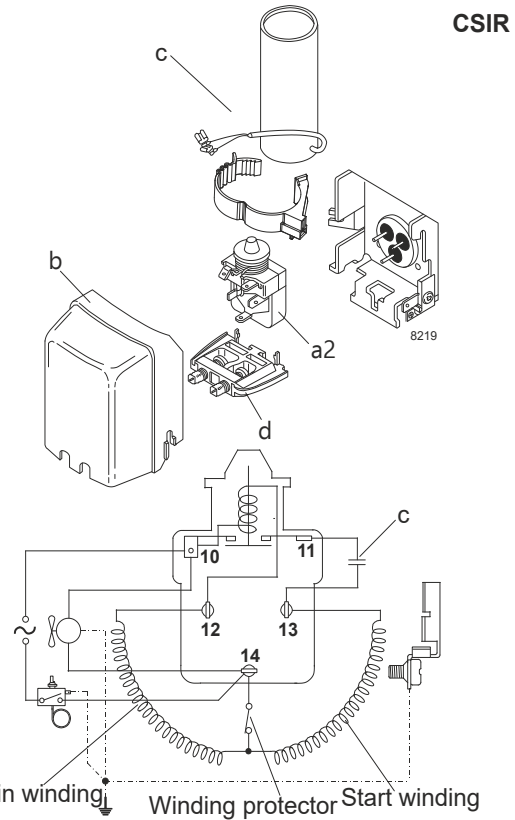
### Model

Designation **NLE11MF.2** **220-240V/50Hz** Conf. 8 Sales code: **105G7101**

### Configuration

Motor configuration CSIR  
 Power supply (nominal) 220-240V/50Hz 1~  
 Refrigerant R513A  
 Application MBP  
 Voltage range 198-254V  
 Starting torque HST  
 Approvals VDE

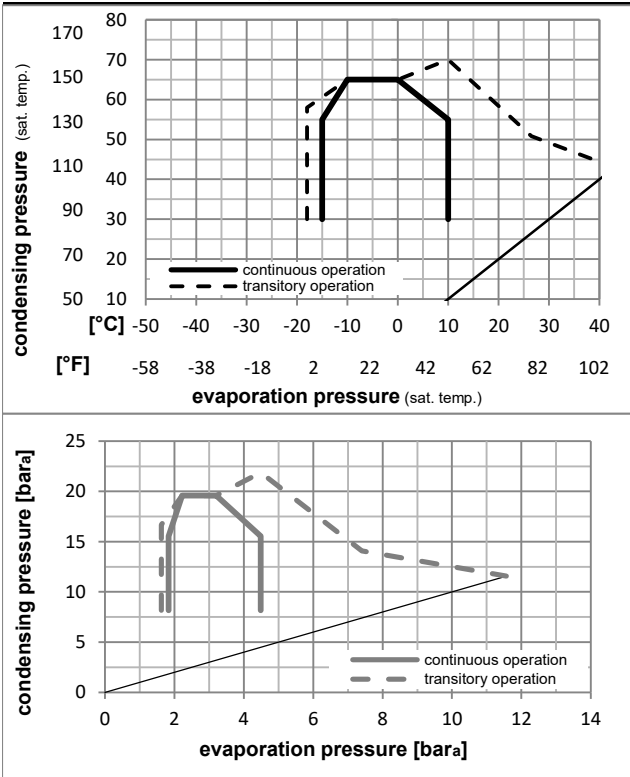
### Electrical accessories / wiring diagram



### Ambient/ machine room temperatures minimum /maximum

Ambient temperature range: 10 - 43°C / 50 - 110°F  
 Machine room temperature range: 10 - 48°C / 50 - 119°F  
 Compressor cooling: fan 3m/s

### Operation pressure range



### Components

a2	assy. relay	117U6003
c	start capacitor (80µF)	117U5015
b	plastic cover	103N2010
d	cord relief	103N1010

### Alternative components

b	plastic cover	103N2011
---	---------------	----------

## Model

Designation **NLE11MF.2** **220-240V/50Hz** Conf. 8 Sales code: **105G7101**

## Optimization + standard conditions

R513A, 220V/50Hz, CSIR, fan 3m/s, VDE

		Evaporating pressure (saturation temperature)				Condensing pressure (saturation temperature)			Return gas temp.			Liquid temp.			Cooling capacity			COP			EER			Power consumption			Current consumption			Ref. mass flow		
		pe	pc	RGT	Tliq	[W]	[Btu/h]	[kcal/h]	[W/W]	[Btu/Wh]	[kcal/Wh]	[W]	[A]	[kg/h]	ASHRAE MBP																	
[°C]	[°F]																															
-7	20	54	130	35	95	46	115	714,1	2439	614,6	1,86	6,34	1,60	385,0	2,29	17,49	ASHRAE MBP															
-10	14	55	131	32	90	55	131	546,2	1865	470,0	1,53	5,23	1,32	356,8	2,19	15,10	cecomaf MBP															
-10	14	45	113	20	68	45	113	627,3	2142	539,8	1,87	6,39	1,61	335,5	2,12	16,63	EN12900 MBP															
-7	20	49	120	18	65	49	120	671,4	2293	577,8	1,81	6,19	1,56	370,2	2,24	18,92	ARI540 MBP															
-10	14	45	113	32	90	45	113	655,9	2240	564,5	1,96	6,68	1,68	335,5	2,12	16,13	opt															
-25	-13	45	113	32	90	45	113	322,4	1101	277,5	1,35	4,62	1,16	238,5	1,86	7,86	opt															

## Performance tables

R513A, 220V/50Hz, CSIR, fan 3m/s, VDE

	pe		Cooling capacity			COP			EER			P1			I			m		
	[°C]	[°F]	[W]	[Btu/h]	[kcal/h]	[W/W]	[Btu/Wh]	[kcal/Wh]	[W]	[A]	[kg/h]									
[°C / °F]	-15	5	525,6	1795	452,3	1,75	5,96	1,50	300,9	2,02	12,88									
cond. pressure	-10	14	655,9	2240	564,5	1,96	6,68	1,68	335,5	2,12	16,13									
pc= 45/113	-7	20	753,7	2574	648,6	2,10	7,17	1,81	358,7	2,19	18,58									
return gas temp.	0	32	983,2	3358	846,2	2,42	8,28	2,09	405,7	2,36	24,39									
RGT= 32/90	5	41	1183,8	4043	1018,8	2,69	9,20	2,32	439,3	2,48	29,53									
liquid temp	7,2	45	1280,5	4373	1102,0	2,82	9,65	2,43	453,3	2,54	32,03									
Tliq= 45/113	10	50	1411,3	4820	1214,6	3,00	10,25	2,58	470,3	2,60	35,43									
[°C / °F]	-15	5	433,0	1479	372,7	1,38	4,70	1,18	314,9	2,06	11,93									
cond. pressure	-10	14	546,2	1865	470,0	1,53	5,23	1,32	356,8	2,19	15,10									
pc= 55/131	-7	20	631,8	2158	543,8	1,64	5,59	1,41	385,9	2,29	17,52									
return gas temp	0	32	835,2	2852	718,7	1,87	6,38	1,61	447,1	2,51	23,32									
RGT= 32/90	5	41	1014,6	3465	873,2	2,06	7,03	1,77	493,2	2,69	28,51									
liquid temp	7,2	45	1101,6	3762	948,0	2,15	7,33	1,85	513,4	2,77	31,05									
Tliq= 55/131	10	50	1219,8	4166	1049,7	2,26	7,73	1,95	538,6	2,87	34,53									

### Model

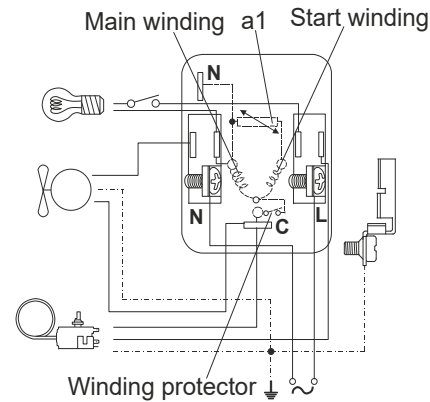
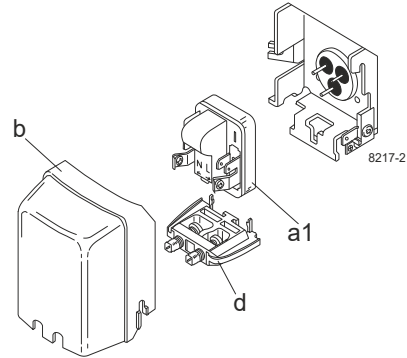
Designation	<b>NLE11MF.2</b>	<b>220-240V/50Hz</b>	<b>Conf. 9</b>	Sales code:	<b>105G7101</b>
-------------	------------------	----------------------	----------------	-------------	-----------------

### Configuration

Motor configuration	eRSIR
Power supply (nominal)	220-240V/50Hz 1~
Refrigerant	R513A
Application	MBP
Voltage range	198-254V
Starting torque	LST
Approvals	VDE

### Electrical accessories / wiring diagram

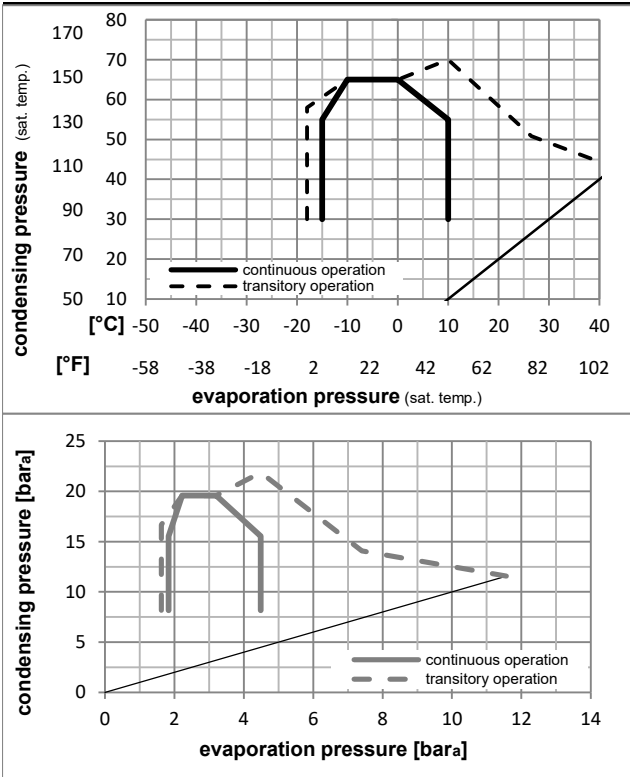
RSIR



### Ambient/ machine room temperatures minimum /maximum

Ambient temperature range:	10 - 43°C / 50 - 110°F
Machine room temperature range:	10 - 48°C / 50 - 119°F
Compressor cooling:	fan 3m/s

### Operation pressure range



### Components

a1	e-PTC starter (220V, 250hm, 4.8mm)	103N0050
b	plastic cover	103N2010
d	cord relief	103N1010

### Alternative components

b	plastic cover	103N2011
---	---------------	----------

## Model

Designation **NLE11MF.2** **220-240V/50Hz** Conf. 9 Sales code: **105G7101**

## Optimization + standard conditions

R513A, 220V/50Hz, eRSIR, fan 3m/s, VDE

		Evaporating pressure (saturation temperature)				Condensing pressure (saturation temperature)			Return gas temp.			Liquid temp.			Cooling capacity			COP			EER			Power consumption			Current consumption			Ref. mass flow		
		pe	pc	RGT	Tliq	[W]	[Btu/h]	[kcal/h]	[W/W]	[Btu/Wh]	[kcal/Wh]	[W]	[A]	[kg/h]	ASHRAE MBP																	
[°C]	[°F]																															
-7	20	54	130	35	95	46	115	714,1	2439	614,6	1,86	6,34	1,60	385,0	2,29	17,49	ASHRAE MBP															
-10	14	55	131	32	90	55	131	546,2	1865	470,0	1,53	5,23	1,32	356,8	2,19	15,10	cecomaf MBP															
-10	14	45	113	20	68	45	113	627,3	2142	539,8	1,87	6,39	1,61	335,5	2,12	16,63	EN12900 MBP															
-7	20	49	120	18	65	49	120	671,4	2293	577,8	1,81	6,19	1,56	370,2	2,24	18,92	ARI540 MBP															
-10	14	45	113	32	90	45	113	655,9	2240	564,5	1,96	6,68	1,68	335,5	2,12	16,13	opt															
-25	-13	45	113	32	90	45	113	322,4	1101	277,5	1,35	4,62	1,16	238,5	1,86	7,86	opt															

## Performance tables

R513A, 220V/50Hz, eRSIR, fan 3m/s, VDE

	pe		Cooling capacity			COP			EER			P1			I			m		
	[°C]	[°F]	[W]	[Btu/h]	[kcal/h]	[W/W]	[Btu/Wh]	[kcal/Wh]	[W]	[A]	[kg/h]									
[°C / °F]	-15	5	525,6	1795	452,3	1,75	5,96	1,50	300,9	2,02	12,88									
cond. pressure	-10	14	655,9	2240	564,5	1,96	6,68	1,68	335,5	2,12	16,13									
pc= 45/113	-7	20	753,7	2574	648,6	2,10	7,17	1,81	358,7	2,19	18,58									
return gas temp.	0	32	983,2	3358	846,2	2,42	8,28	2,09	405,7	2,36	24,39									
RGT= 32/90	5	41	1183,8	4043	1018,8	2,69	9,20	2,32	439,3	2,48	29,53									
liquid temp	7,2	45	1280,5	4373	1102,0	2,82	9,65	2,43	453,3	2,54	32,03									
Tliq= 45/113	10	50	1411,3	4820	1214,6	3,00	10,25	2,58	470,3	2,60	35,43									
[°C / °F]	-15	5	433,0	1479	372,7	1,38	4,70	1,18	314,9	2,06	11,93									
cond. pressure	-10	14	546,2	1865	470,0	1,53	5,23	1,32	356,8	2,19	15,10									
pc= 55/131	-7	20	631,8	2158	543,8	1,64	5,59	1,41	385,9	2,29	17,52									
return gas temp	0	32	835,2	2852	718,7	1,87	6,38	1,61	447,1	2,51	23,32									
RGT= 32/90	5	41	1014,6	3465	873,2	2,06	7,03	1,77	493,2	2,69	28,51									
liquid temp	7,2	45	1101,6	3762	948,0	2,15	7,33	1,85	513,4	2,77	31,05									
Tliq= 55/131	10	50	1219,8	4166	1049,7	2,26	7,73	1,95	538,6	2,87	34,53									

## Model

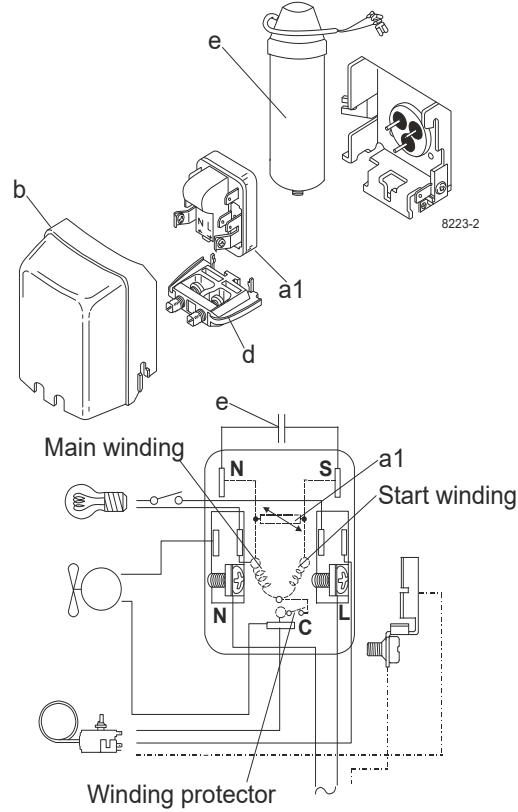
Designation **NLE11MF.2** **220-240V/50Hz** Conf. 10 Sales code: **105G7101**

## Configuration

Motor configuration eRSCR  
 Power supply (nominal) 220-240V/50Hz 1~  
 Refrigerant R513A  
 Application MBP  
 Voltage range 198-254V  
 Starting torque LST  
 Approvals VDE

## Electrical accessories / wiring diagram

RSCR



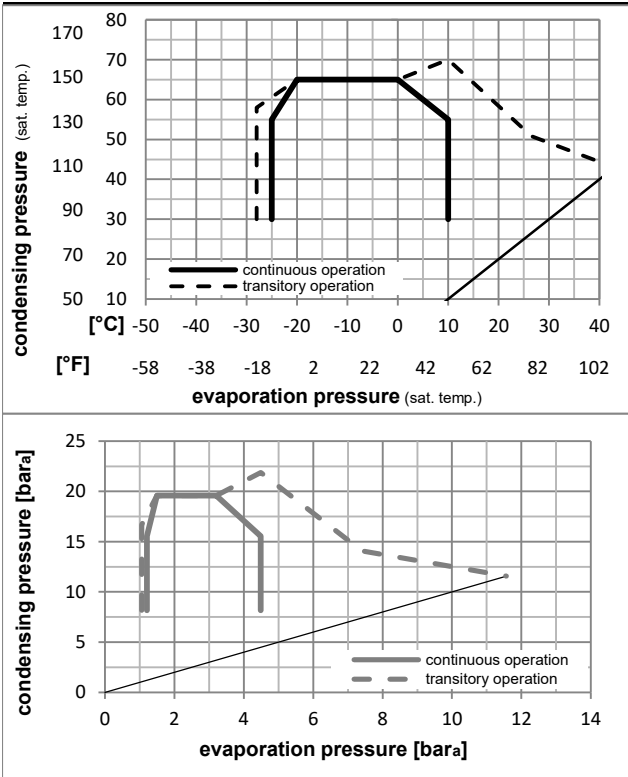
## Ambient/ machine room temperatures minimum /maximum

Ambient temperature range: 10 - 43°C / 50 - 110°F

Machine room temperature range: 10 - 48°C / 50 - 119°F

Compressor cooling: fan 3m/s

## Operation pressure range



## Components

a1	e-PTC starter (220V, 250hm, 4.8mm)	103N0050
e	run capacitor (4μF, 4.8mm)	117-7119
b	plastic cover	103N2010
d	cord relief	103N1010
	bracket for run capacitor	117-0300
	screw M4x8mm	117-0301

## Alternative components

b	plastic cover	103N2011
---	---------------	----------

## Model

Designation **NLE11MF.2** **220-240V/50Hz** Conf. 10 Sales code: **105G7101**

## Optimization + standard conditions

R513A, 220V/50Hz, eRSCR, fan 3m/s, VDE

		Evaporating pressure (saturation temperature)				Condensing pressure (saturation temperature)			Return gas temp.			Liquid temp.			Cooling capacity			COP			EER			Power consumption			Current consumption			Ref. mass flow		
		pe	pc	RGT	Tliq	[W]	[Btu/h]	[kcal/h]	[W/W]	[Btu/Wh]	[kcal/Wh]	[W]	[A]	[kg/h]	ASHRAE MBP																	
[°C]	[°F]																															
-7	20	54	130	35	95	46	115	723,8	2472	622,9	2,00	6,84	1,72	361,4	1,96	17,73	ASHRAE MBP															
-10	14	55	131	32	90	55	131	553,6	1891	476,4	1,65	5,64	1,42	335,0	1,86	15,31	cecomaf MBP															
-10	14	45	113	20	68	45	113	635,7	2171	547,1	2,02	6,89	1,74	315,1	1,79	16,85	EN12900 MBP															
-7	20	49	120	18	65	49	120	680,4	2324	585,6	1,96	6,68	1,68	347,6	1,91	19,17	ARI540 MBP															
-10	14	45	113	32	90	45	113	664,8	2270	572,1	2,11	7,21	1,82	315,1	1,79	16,34	opt															
-25	-13	45	113	32	90	45	113	326,8	1116	281,2	1,46	4,98	1,25	224,2	1,51	7,96	opt															

## Performance tables

R513A, 220V/50Hz, eRSCR, fan 3m/s, VDE

	pe		Cooling capacity			COP			EER			P1			I			m		
	[°C]	[°F]	[W]	[Btu/h]	[kcal/h]	[W/W]	[Btu/Wh]	[kcal/Wh]	[W]	[A]	[kg/h]									
[°C / °F]	-25	-13	326,8	1116	281,2	1,46	4,98	1,25	224,2	1,51	7,96									
cond. pressure	-20	-4	420,6	1436	361,9	1,67	5,70	1,44	252,1	1,59	10,28									
pc= 45/113	-15	5	532,6	1819	458,4	1,88	6,43	1,62	282,7	1,68	13,05									
return gas temp.	-10	14	664,8	2270	572,1	2,11	7,21	1,82	315,1	1,79	16,34									
RGT= 32/90	0	32	996,5	3403	857,6	2,62	8,93	2,25	381,0	2,03	24,72									
liquid temp	5	41	1199,8	4098	1032,6	2,91	9,93	2,50	412,5	2,16	29,93									
Tliq= 45/113	10	50	1430,5	4885	1231,1	3,24	11,06	2,79	441,8	2,28	35,91									
[°C / °F]	-25	-13	264,0	902	227,2	1,16	3,95	1,00	228,2	1,52	7,23									
cond. pressure	-20	-4	343,0	1171	295,2	1,32	4,51	1,14	259,7	1,61	9,42									
pc= 55/131	-15	5	438,9	1499	377,7	1,48	5,07	1,28	295,7	1,72	12,09									
return gas temp	-10	14	553,6	1891	476,4	1,65	5,64	1,42	335,0	1,86	15,31									
RGT= 32/90	0	32	846,5	2891	728,5	2,02	6,89	1,74	419,7	2,19	23,64									
liquid temp	5	41	1028,5	3512	885,1	2,22	7,58	1,91	463,2	2,36	28,90									
Tliq= 55/131	10	50	1236,4	4223	1064,1	2,44	8,35	2,10	506,0	2,54	35,01									