

## Model

Designation	<b>NLE11MNDX</b>	220-240V/50Hz 1~	Sales code:	<b>105H7103</b>
-------------	------------------	------------------	-------------	-----------------

## Compressor design

Oil type	Polyolester	Refrigerant(s)	<b>R290</b>
Oil viscosity	32cSt	Displacement	11,15cm <sup>3</sup> / 0,68cu.in
Oil quantity	298cm <sup>3</sup> / 10,1fl.oz	Compressors on pallet	
Refr. charge - tech. limit	300g / 10,6oz		
Free gas volume comp.	2360cm <sup>3</sup> / 79,8fl.oz		
Weight	11,8kg / 26lbs		
Motor protection	external		
Winding resistance main	7,5Ω (at 25°C)		
Winding resistance aux	12,9Ω (at 25°C)		
Max. winding temp.	125°C / 257°F		
Max. discharge temp.	130°C / 266°F		



## General - Configurations with NLE11MNDX

Conf. 1	
Motor configuration	CSCR
Power supply (nominal)	220-240V/50Hz
Number of phases	1
Voltage range	198-254V
Approvals	VDE
Starting torque	HST
Note	- / -

## Applications with NLE11MNDX

Conf. 1	
Refrigerant	R290
Application	MBP
System cooling	fan 3m/s
Hot gas defrost	OK
Long interval pull down	OK

## Electrical data - Configurations with NLE11MNDX

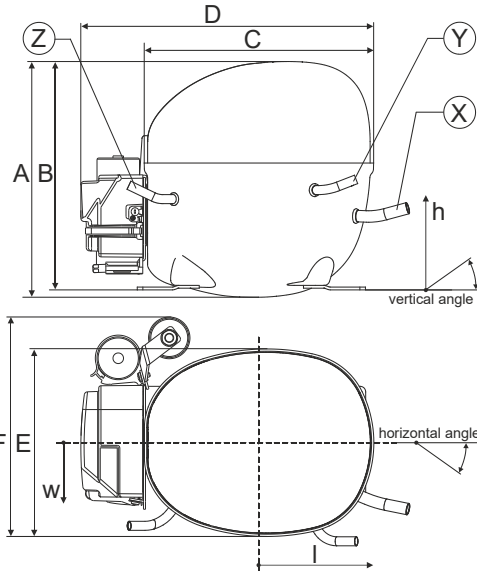
Conf. 1	
Starting device type	relay
Run capacitor	10μF
Start capacitor	80μF
LRA (locked rotor amps / 4s/ U(N))	16,7A
RLA (rated load amps / 1s/ U(N))	2,2A
Cut in current (U(N))	16,7A

## Model

Designation **NLE11MNDX** 220-240V/50Hz 1~ Sales code: **105H7103**

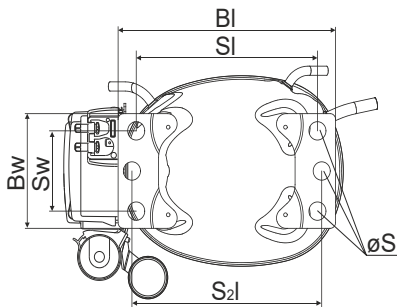
## Compressor dimensions

<b>Housing</b>	A Height	209mm / 8,23in
	B Height	203mm / 7,99in
	C Length shell	205mm / 8,07in
	D Length w. cover	262mm / 10,31in
	E Width	166mm / 6,54in



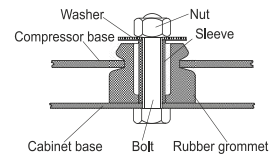
Connectors		Suction	Discharge	Process
		X	Y	Z
Diameter	[mm]	øi 8,11-8,29	øi 6,11-6,29	øi 6,11-6,29
(i:inside, o:outside)	[in]	øi 0,32-0,33	øi 0,24-0,25	øi 0,24-0,25
Material		copper	copper	copper
Horizontal angle	±2°	11°	0°	0°
Vertical angle	±2°	15°	21°	25°
Position l/h/w	[mm]	140/72/59	94/98/87	-109/93/74
	[in]	5,5/2,8/2,3	3,7/3,9/3,4	-4,3/3,7/2,9
Straight tube l.	[mm]	12	12	12
	[in]	0,5	0,5	0,5

## Compressor fixation

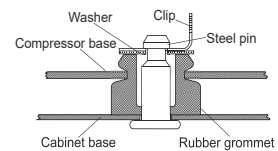


Baseplate	[mm]	[inch]
BI	204	8.03
Bw	100	3.94
Small holes		
	[mm]	[inch]
SI	170	6.7
Sw	70	2.76
S2l	178	7
øS	ø 16	ø 0.63

### Bolt joint



### Snap-on



Mounting accessories	one comp.	multi pack
Bolt joint   M6   ø16mm	118-1917	118-1918
Bolt joint   ø1/4"   ø16mm	118-1946	
Snap-on   ø7,3   ø16mm	118-1947	118-1919

## Application notes

Provision for PE Grounding is located at the PE Stamp on the compressor

## Model

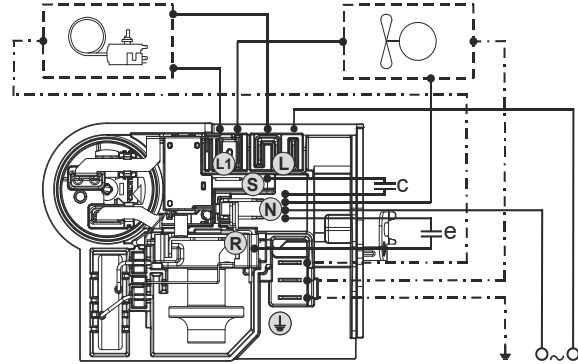
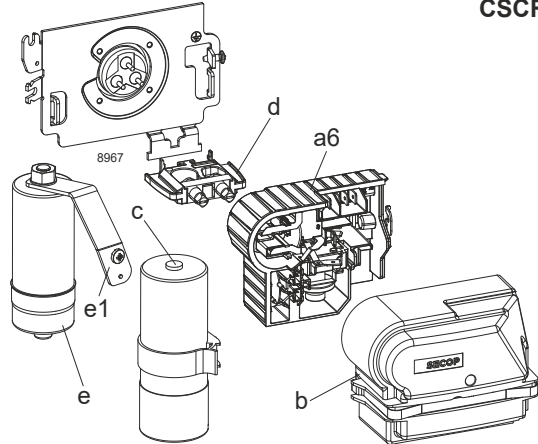
Designation **NLE11MNDX** **220-240V/50Hz** Conf. 1 Sales code: **105H7103**

## Configuration

Motor configuration CSCR  
 Power supply (nominal) 220-240V/50Hz 1~  
 Refrigerant R290  
 Application MBP  
 Voltage range 198-254V  
 Starting torque HST  
 Approvals VDE

## Electrical accessories / wiring diagram

CSCR

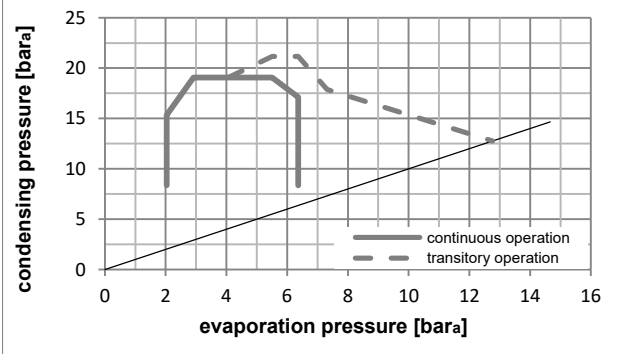
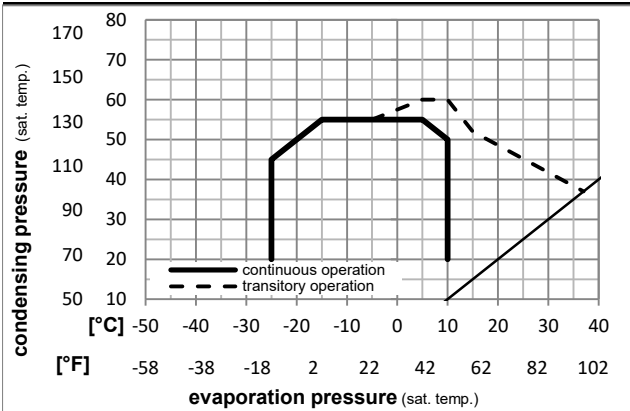


## Ambient/ machine room temperatures minimum /maximum

Ambient temperature range: 10 - 43°C / 50 - 110°F  
 Machine room temperature range: 10 - 48°C / 50 - 119°F

Compressor cooling: fan 3m/s

## Operation pressure range



## Components

a6	NL starter kit	117U8201
c	start capacitor (80µF)	117U5353
e	run cap (10µF, 6.3mm,c.length 280mm)	117-7166
b	cover terminal board + clamp	117U1038
e1	retaining clamp	117-0314
	screw M4x8mm	117-0301
d	cord relief	103N1007

## Model

Designation **NLE11MNDX 220-240V/50Hz** Conf. 1 Sales code: **105H7103**

## Optimization + standard conditions

R290, 220V/50Hz, CSCR, fan 3m/s, VDE

		Evaporating pressure (saturation temperature)				Cooling capacity			COP	EER	Power consumption				
		Condensing pressure (saturation temperature)				Return gas temp.					Current consumption				
		Liquid temp.				Cooling capacity					Ref. mass flow				
		pe	pc	RGT	Tliq	[W]	[Btu/h]	[kcal/h]	[W/W]	[Btu/Wh]	[kcal/Wh]	P1	I	m	
[°C]	[°F]	[°C]	[°F]	[°C]	[°F]	[W]	[Btu/h]	[kcal/h]	[W/W]	[Btu/Wh]	[kcal/Wh]	[W]	[A]	[kg/h]	
[°C]	-7	54	35	46	999,3	3413	860,0	2,14	7,30	1,84	467,3	2,22	11,40	<b>ASHRAE MBP</b>	
[°F]	20	130	95	115											
[°C]	-10	55	32	55	799,5	2730	688,0	1,79	6,11	1,54	447,1	2,13	10,11	<b>cecomaf MBP</b>	
[°F]	14	131	90	131											
[°C]	-10	45	20	45	874,0	2985	752,2	2,17	7,39	1,86	403,7	1,93	10,73	<b>EN12900 MBP</b>	
[°F]	14	113	68	113											
[°C]	-7	49	18	49	930,4	3178	800,7	2,12	7,22	1,82	439,8	2,10	12,08	<b>ARI540 MBP</b>	
[°F]	20	120	65	120											
[°C]	-10	45	32	45	909,9	3107	783,1	2,25	7,70	1,94	403,7	1,93	10,41	<b>opt</b>	
[°F]	14	113	90	113											
[°C]	-25	45	32	45	499,1	1705	429,6	1,59	5,42	1,37	314,5	1,57	5,63	<b>opt</b>	
[°F]	-13	113	90	113											

## Performance tables

R290, 220V/50Hz, CSCR, fan 3m/s, VDE

	pe		Cooling capacity			COP	EER	P1	I	m	
	[°C]	[°F]	[W]	[Btu/h]	[kcal/h]	[W/W]	[Btu/Wh]	[kcal/Wh]	[W]	[A]	[kg/h]
[°C / °F]	-25	-13	499,1	1705	429,6	1,59	5,42	1,37	314,5	1,57	5,63
cond. pressure	-20	-4	617,8	2110	531,7	1,78	6,09	1,53	346,6	1,69	7,00
pc= 45/113	-15	5	754,0	2575	648,9	2,00	6,84	1,72	376,6	1,82	8,58
return gas temp.	-10	14	909,9	3107	783,1	2,25	7,70	1,94	403,7	1,93	10,41
RGT= 32/90	0	32	1289,5	4404	1109,8	2,91	9,92	2,50	443,9	2,12	14,96
liquid temp	5	41	1517,6	5183	1306,1	3,34	11,39	2,87	454,9	2,17	17,76
Tliq= 45/113	10	50	1774,2	6059	1526,9	3,87	13,22	3,33	458,2	2,18	20,96
[°C / °F]	-25	-13	431,7	1474	371,5	1,30	4,43	1,12	333,0	1,65	5,37
cond. pressure	-20	-4	539,1	1841	464,0	1,45	4,95	1,25	372,1	1,80	6,74
pc= 55/131	-15	5	661,0	2257	568,9	1,61	5,50	1,39	410,5	1,97	8,31
return gas temp	-10	14	799,5	2730	688,0	1,79	6,11	1,54	447,1	2,13	10,11
RGT= 32/90	0	32	1134,9	3876	976,7	2,22	7,60	1,91	510,3	2,42	14,58
liquid temp	5	41	1336,2	4564	1150,0	2,50	8,54	2,15	534,6	2,53	17,33
Tliq= 55/131	10	50	1562,9	5338	1345,1	2,83	9,66	2,43	552,6	2,62	20,49