

Model

Designation	NLE11MNDX	220-240V/50Hz 1~	Sales code:	105H7113
-------------	------------------	-------------------------	-------------	-----------------

Compressor design

Oil type	Polyolester	Refrigerant(s)	R290
Oil viscosity	32cSt	Displacement	11,15cm ³ / 0,68cu.in
Oil quantity	298cm ³ / 10,1fl.oz	Compressors on pallet	
Refr. charge - tech. limit	300g / 10,6oz		
Free gas volume comp.	2360cm ³ / 79,8fl.oz		
Weight	11,8kg / 26lbs		
Motor protection	external		
Winding resistance main	7,5Ω (at 25°C)		
Winding resistance aux	12,9Ω (at 25°C)		
Max. winding temp.	125°C / 257°F		
Max. discharge temp.	130°C / 266°F		



General - Configurations with NLE11MNDX

	Conf. 1
Motor configuration	CSCR
Power supply (nominal)	220-240V/50Hz
Number of phases	1
Voltage range	198-254V
Approvals	VDE
Starting torque	HST
Note	Starter kit(relay), cover and cord relief are included and pre-assembled.

Applications with NLE11MNDX

	Conf. 1
Refrigerant	R290
Application	MBP
System cooling	fan 3m/s
Hot gas defrost	OK
Long interval pull down	OK

Electrical data - Configurations with NLE11MNDX

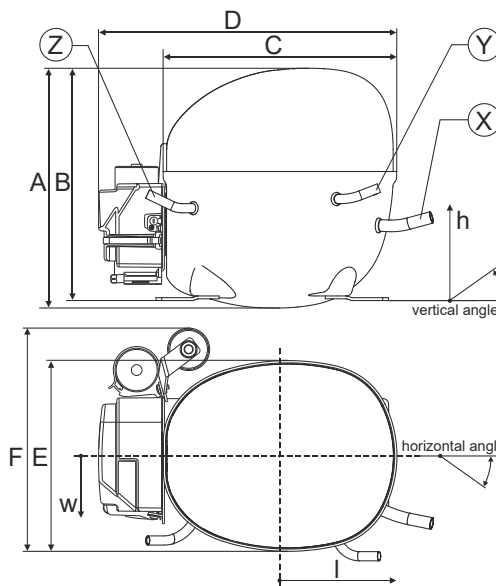
	Conf. 1
Starting device type	relay
Run capacitor	10μF
Start capacitor	80μF
LRA (locked rotor amps / 4s/ U(N))	16,7A
RLA (rated load amps / 1s/ U(N))	2,2A
Cut in current (U(N))	16,7A

Model

Designation **NLE11MNDX** 220-240V/50Hz 1~ Sales code: **105H7113**

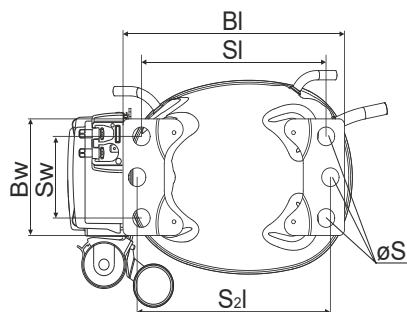
Compressor dimensions

Housing	A Height	209mm / 8,23in
	B Height	203mm / 7,99in
	C Length shell	205mm / 8,07in
	D Length w. cover	262mm / 10,31in
	E Width	166mm / 6,54in



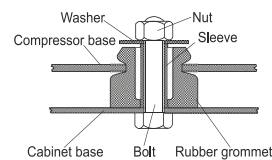
Connectors		Suction	Discharge	Process
		X	Y	Z
Diameter	[mm]	øi 8,11-8,29	øi 6,11-6,29	øi 6,11-6,29
(i:inside, o:outside)	[in]	øi 0,32-0,33	øi 0,24-0,25	øi 0,24-0,25
Material		copper	copper	copper
Horizontal angle	±2°	11°	0°	0°
Vertical angle	±2°	15°	21°	25°
Position l/h/w	[mm]	140/72/59	94/98/87	-109/93/74
	[in]	5,5/2,8/2,3	3,7/3,9/3,4	-4,3/3,7/2,9
Straight tube l.	[mm]	12	12	12
	[in]	0,5	0,5	0,5

Compressor fixation

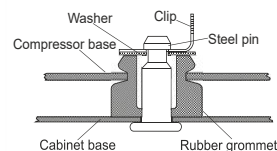


Baseplate	[mm]	[inch]
BI	204	8.03
Bw	100	3.94
Small holes		
	[mm]	[inch]
SI	170	6.7
Sw	70	2.76
S2l	178	7
øS	ø 16	ø 0.63

Bolt joint



Snap-on



Mounting accessories	one comp.	multi pack
Bolt joint M6 ø16mm	118-1917	118-1918
Bolt joint ø1/4" ø16mm	118-1946	
Snap-on ø7,3 ø16mm	118-1947	118-1919

Application notes

Provision for PE Grounding is located at the PE Stamp on the compressor

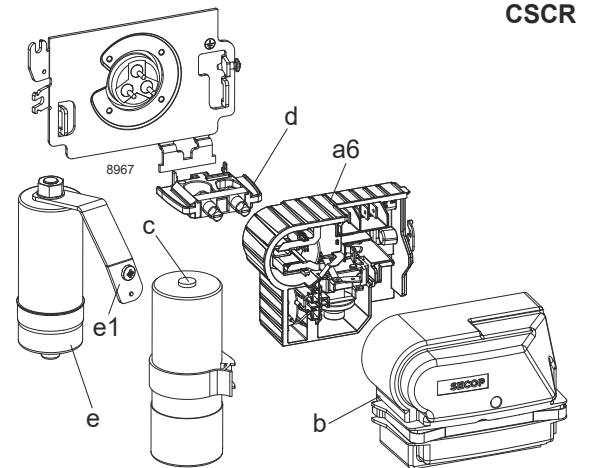
Model

Designation	NLE11MNDX	220-240V/50Hz	Conf. 1	Sales code:	105H7113
-------------	------------------	----------------------	---------	-------------	-----------------

Configuration

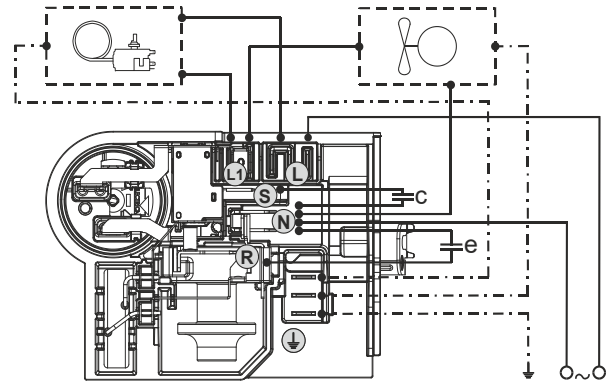
Motor configuration	CSCR
Power supply (nominal)	220-240V/50Hz 1~
Refrigerant	R290
Application	MBP
Voltage range	198-254V
Starting torque	HST
Approvals	VDE

Electrical accessories / wiring diagram

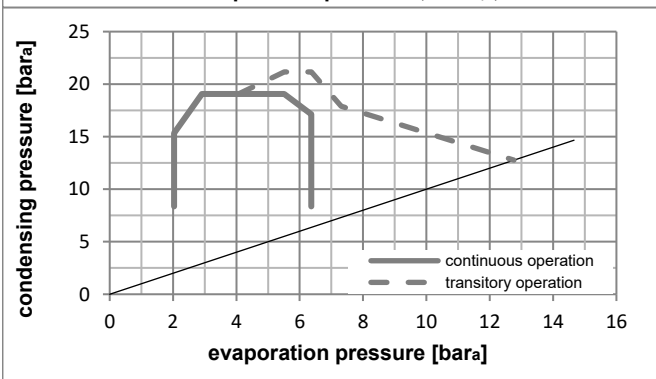
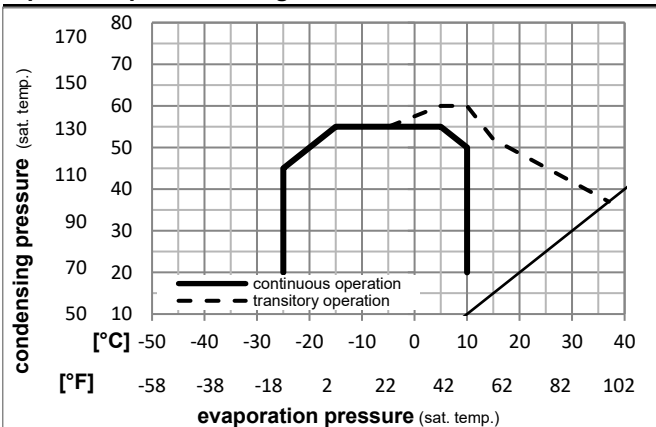


Ambient/ machine room temperatures minimum /maximum

Ambient temperature range:	10 - 43°C / 50 - 110°F
Machine room temperature range:	10 - 48°C / 50 - 119°F
Compressor cooling:	fan 3m/s



Operation pressure range



Components (Starter kit (a6)+cover (b) +cord relief (d): pre assembled)

a6	NL starter kit	117U8201
c	start capacitor (80µF)	117U5353
e	run cap (10µF, 6.3mm,c.length 280mm)	117-7166
b	cover terminal board + clamp	117U1038
e1	retaining clamp	117-0314
	screw M4x8mm	117-0301
d	cord relief	103N1007

Model

Designation **NLE11MNDX 220-240V/50Hz** Conf. 1 Sales code: **105H7113**

Optimization + standard conditions

R290, 220V/50Hz, CSCR, fan 3m/s, VDE

		Evaporating pressure (saturation temperature)				Cooling capacity			COP			EER			Power consumption			
		Condensing pressure (saturation temperature)				Return gas temp.			Liquid temp.			Current consumption			Ref. mass flow			
		pe	pc	RGT	Tliq	[W]	[Btu/h]	[kcal/h]	[W/W]	[Btu/Wh]	[kcal/Wh]	P1	I	m	[W]	[A]	[kg/h]	
[°C]	[°F]	[°C]	[°F]	[°C]	[°F]													
-7	20	54	130	35	95	999,3	3413	860,0	2,14	7,30	1,84	467,3	2,22	11,40				ASHRAE MBP
-10	14	55	131	32	90	799,5	2730	688,0	1,79	6,11	1,54	447,1	2,13	10,11				cecomaf MBP
-10	14	45	113	20	68	874,0	2985	752,2	2,17	7,39	1,86	403,7	1,93	10,73				EN12900 MBP
-7	20	49	120	18	65	930,4	3178	800,7	2,12	7,22	1,82	439,8	2,10	12,08				ARI540 MBP
-10	14	45	113	32	90	909,9	3107	783,1	2,25	7,70	1,94	403,7	1,93	10,41				opt
-25	-13	45	113	32	90	499,1	1705	429,6	1,59	5,42	1,37	314,5	1,57	5,63				opt

Performance tables

R290, 220V/50Hz, CSCR, fan 3m/s, VDE

	pe		Cooling capacity			COP			EER			P1	I	m
	[°C]	[°F]	[W]	[Btu/h]	[kcal/h]	[W/W]	[Btu/Wh]	[kcal/Wh]	[W]	[A]	[kg/h]			
[°C / °F]	-25	-13	499,1	1705	429,6	1,59	5,42	1,37	314,5	1,57	5,63			
cond. pressure	-20	-4	617,8	2110	531,7	1,78	6,09	1,53	346,6	1,69	7,00			
pc= 45/113	-15	5	754,0	2575	648,9	2,00	6,84	1,72	376,6	1,82	8,58			
return gas temp.	-10	14	909,9	3107	783,1	2,25	7,70	1,94	403,7	1,93	10,41			
RGT= 32/90	0	32	1289,5	4404	1109,8	2,91	9,92	2,50	443,9	2,12	14,96			
liquid temp	5	41	1517,6	5183	1306,1	3,34	11,39	2,87	454,9	2,17	17,76			
Tliq= 45/113	10	50	1774,2	6059	1526,9	3,87	13,22	3,33	458,2	2,18	20,96			
[°C / °F]	-25	-13	431,7	1474	371,5	1,30	4,43	1,12	333,0	1,65	5,37			
cond. pressure	-20	-4	539,1	1841	464,0	1,45	4,95	1,25	372,1	1,80	6,74			
pc= 55/131	-15	5	661,0	2257	568,9	1,61	5,50	1,39	410,5	1,97	8,31			
return gas temp	-10	14	799,5	2730	688,0	1,79	6,11	1,54	447,1	2,13	10,11			
RGT= 32/90	0	32	1134,9	3876	976,7	2,22	7,60	1,91	510,3	2,42	14,58			
liquid temp	5	41	1336,2	4564	1150,0	2,50	8,54	2,15	534,6	2,53	17,33			
Tliq= 55/131	10	50	1562,9	5338	1345,1	2,83	9,66	2,43	552,6	2,62	20,49			