

## Model

Designation	<b>NLE13LNDX</b>	220-240V/50Hz 1~	Sales code:	<b>105H7301</b>
-------------	------------------	------------------	-------------	-----------------

## Compressor design

Oil type	Polyolester	Refrigerant(s)	<b>R290</b>
Oil viscosity	32cSt	Displacement	12,6cm <sup>3</sup> / 0,77cu.in
Oil quantity	298cm <sup>3</sup> / 10,1fl.oz	Compressors on pallet	
Refr. charge - tech. limit	300g / 10,6oz		
Free gas volume comp.	2360cm <sup>3</sup> / 79,8fl.oz		
Weight	11,8kg / 26lbs		
Motor protection	external		
Winding resistance main	8,67Ω (at 25°C)		
Winding resistance aux	15,1Ω (at 25°C)		
Max. winding temp.	125°C / 257°F		
Max. discharge temp.	130°C / 266°F		



## General - Configurations with NLE13LNDX

Conf. 1	
Motor configuration	CSCR
Power supply (nominal)	220-240V/50Hz
Number of phases	1
Voltage range	198-254V
Approvals	VDE
Starting torque	HST
Note	- / -

## Applications with NLE13LNDX

Conf. 1	
Refrigerant	R290
Application	LBP
System cooling	fan 3m/s
Hot gas defrost	OK
Long interval pull down	OK

## Electrical data - Configurations with NLE13LNDX

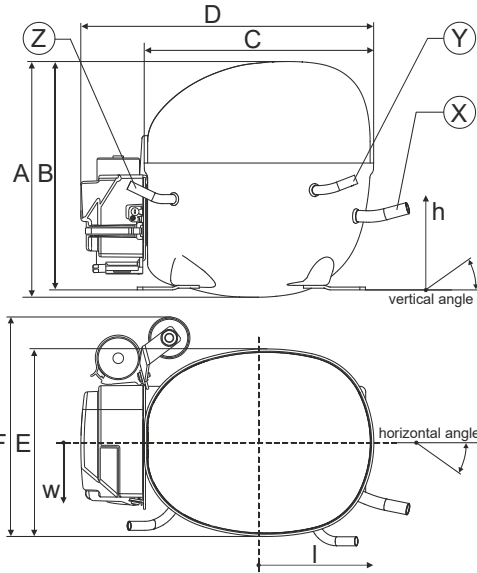
Conf. 1	
Starting device type	relay
Run capacitor	10μF
Start capacitor	80μF
LRA (locked rotor amps / 4s/ U(N))	15,1A
RLA (rated load amps / 1s/ U(N))	1,95A
Cut in current (U(N))	

## Model

Designation **NLE13LNDX** 220-240V/50Hz 1~ Sales code: **105H7301**

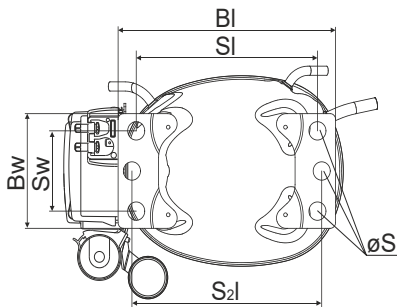
## Compressor dimensions

<b>Housing</b>	A Height	209mm / 8,23in
	B Height	203mm / 7,99in
	C Length shell	205mm / 8,07in
	D Length w. cover	262mm / 10,31in
	E Width	166mm / 6,54in



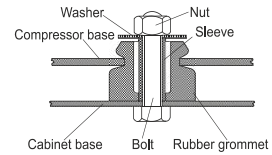
Connectors		Suction	Discharge	Process
		X	Y	Z
Diameter	[mm]	øi 8,11-8,29	øi 6,11-6,29	øi 6,11-6,29
(i:inside, o:outside)	[in]	øi 0,32-0,33	øi 0,24-0,25	øi 0,24-0,25
Material		copper	copper	copper
Horizontal angle	±2°	11°	0°	0°
Vertical angle	±2°	15°	21°	25°
Position l/h/w	[mm]	140/72/59	94/98/87	-109/93/74
	[in]	5,5/2,8/2,3	3,7/3,9/3,4	-4,3/3,7/2,9
Straight tube l.	[mm]	12	12	12
	[in]	0,5	0,5	0,5

## Compressor fixation

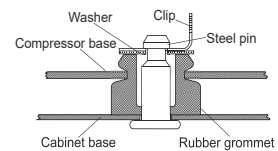


Baseplate	[mm]	[inch]
BI	204	8.03
Bw	100	3.94
Small holes		
	[mm]	[inch]
SI	170	6.7
Sw	70	2.76
S2l	178	7
øS	ø 16	ø 0.63

### Bolt joint



### Snap-on



## Mounting accessories

	one comp.	multi pack
Bolt joint   M6   ø16mm	118-1917	118-1918
Bolt joint   ø1/4"   ø16mm	118-1946	
Snap-on   ø7,3   ø16mm	118-1947	118-1919

## Application notes

Provision for PE Grounding is located at the PE Stamp on the compressor

## Model

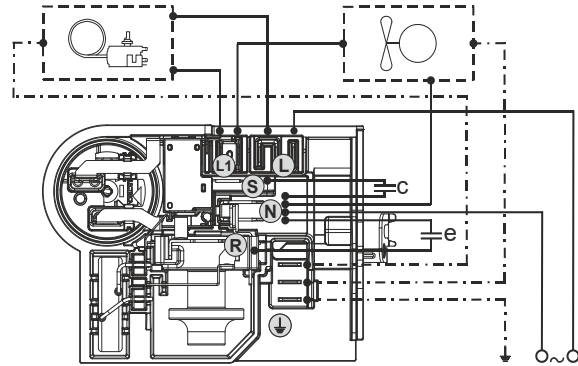
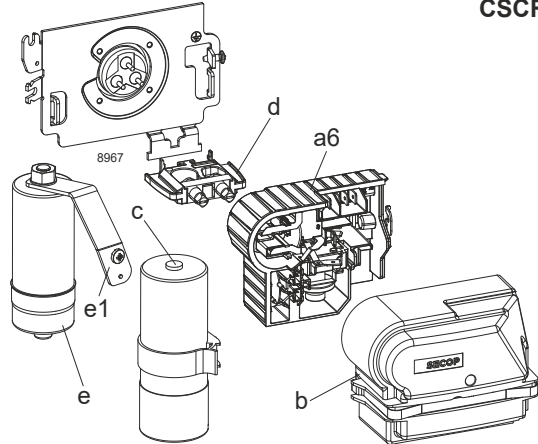
Designation **NLE13LNDX** **220-240V/50Hz** Conf. 1 Sales code: **105H7301**

## Configuration

Motor configuration CSCR  
 Power supply (nominal) 220-240V/50Hz 1~  
 Refrigerant R290  
 Application LBP  
 Voltage range 198-254V  
 Starting torque HST  
 Approvals VDE

## Electrical accessories / wiring diagram

CSCR



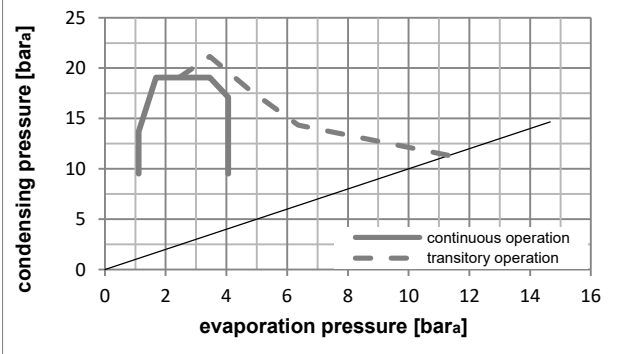
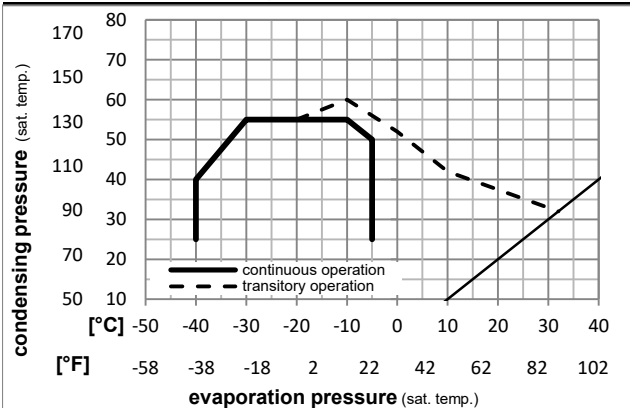
## Ambient/ machine room temperatures minimum /maximum

Ambient temperature range: 10 - 43°C / 50 - 110°F

Machine room temperature range: 10 - 48°C / 50 - 119°F

Compressor cooling: fan 3m/s

## Operation pressure range



## Components

a6	NL starter kit	117U8200
c	start capacitor (80µF)	117U5353
e	run cap (10µF, 6.3mm,c.length 280mm)	117-7166
b	cover terminal board + clamp	117U1038
e1	retaining clamp	117-0314
	screw M4x8mm	117-0301
d	cord relief	103N1007

