

Model

Designation	NLE14LNDX	220-240V/50Hz 1~	Sales code:	105H7402
-------------	------------------	------------------	-------------	-----------------

Compressor design

Oil type	Polyolester	Refrigerant(s)	R290
Oil viscosity	32cSt	Displacement	13,6cm ³ / 0,83cu.in
Oil quantity	298cm ³ / 10,1fl.oz	Compressors on pallet	
Refr. charge - tech. limit	300g / 10,6oz		
Free gas volume comp.	2360cm ³ / 79,8fl.oz		
Weight	11,8kg / 26lbs		
Motor protection	external		
Winding resistance main	7,5Ω (at 25°C)		
Winding resistance aux	12,9Ω (at 25°C)		
Max. winding temp.	125°C / 257°F		
Max. discharge temp.	130°C / 266°F		



General - Configurations with NLE14LNDX

Conf. 1	
Motor configuration	CSCR
Power supply (nominal)	220-240V/50Hz
Number of phases	1
Voltage range	198-254V
Approvals	VDE
Starting torque	HST
Note	- / -

Applications with NLE14LNDX

Conf. 1	
Refrigerant	R290
Application	LBP
System cooling	fan 3m/s
Hot gas defrost	OK
Long interval pull down	-/-

Electrical data - Configurations with NLE14LNDX

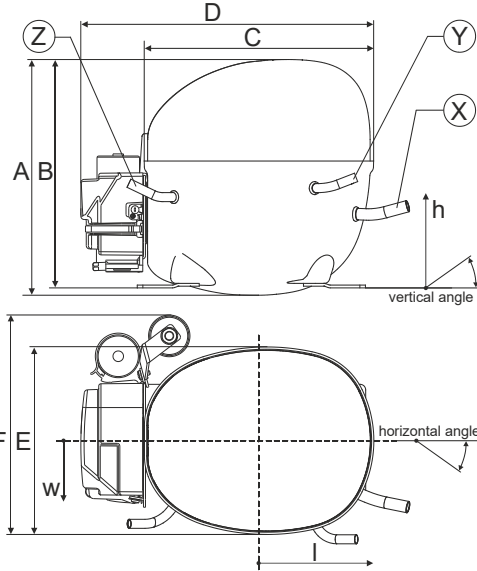
Conf. 1	
Starting device type	relay
Run capacitor	10μF
Start capacitor	80μF
LRA (locked rotor amps / 4s/ U(N))	16,7A
RLA (rated load amps / 1s/ U(N))	2,2A
Cut in current (U(N))	16,7A

Model

Designation **NLE14LNDX** 220-240V/50Hz 1~ Sales code: **105H7402**

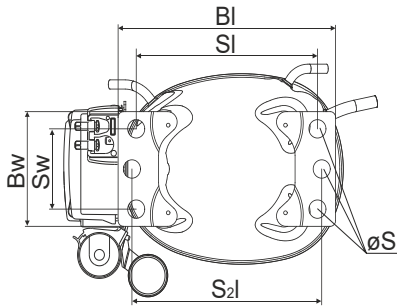
Compressor dimensions

Housing	A Height	209mm / 8,23in
	B Height	203mm / 7,99in
	C Length shell	205mm / 8,07in
	D Length w. cover	262mm / 10,31in
	E Width	166mm / 6,54in



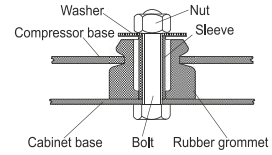
Connectors		Suction	Discharge	Process
		X	Y	Z
Diameter	[mm]	øi 8,11-8,29	øi 6,11-6,29	øi 6,11-6,29
(i:inside, o:outside)	[in]	øi 0,32-0,33	øi 0,24-0,25	øi 0,24-0,25
Material		copper	copper	copper
Horizontal angle	±2°	11°	0°	0°
Vertical angle	±2°	15°	21°	25°
Position l/h/w	[mm]	140/72/59	94/98/87	-109/93/74
	[in]	5,5/2,8/2,3	3,7/3,9/3,4	-4,3/3,7/2,9
Straight tube l.	[mm]	12	12	12
	[in]	0,5	0,5	0,5

Compressor fixation

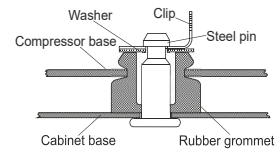


Baseplate	[mm]	[inch]
BI	204	8.03
Bw	100	3.94
Small holes		
	[mm]	[inch]
SI	170	6.7
Sw	70	2.76
S2l	178	7
øS	ø 16	ø 0.63

Bolt joint



Snap-on



Mounting accessories	one comp.	multi pack
Bolt joint M6 ø16mm	118-1917	118-1918
Bolt joint ø1/4" ø16mm	118-1946	
Snap-on ø7,3 ø16mm	118-1947	118-1919

Application notes

Provision for PE Grounding is located at the PE Stamp on the compressor

Model

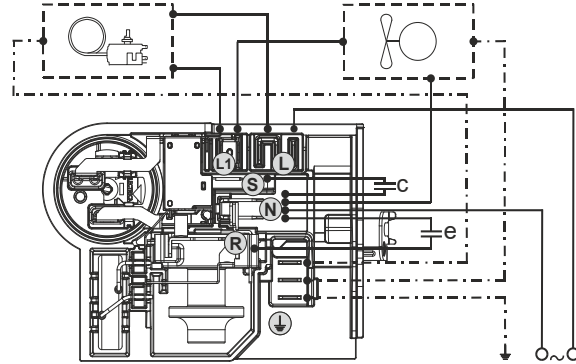
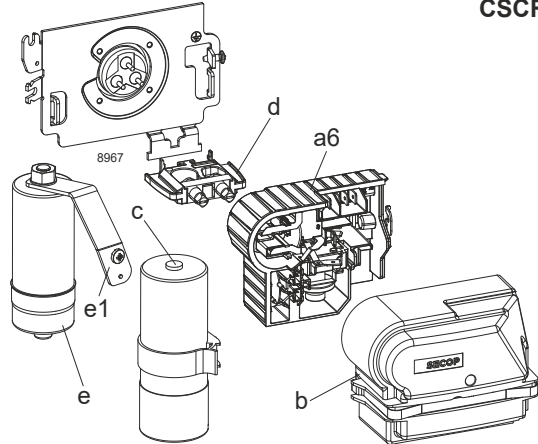
Designation **NLE14LNDX** **220-240V/50Hz** Conf. 1 Sales code: **105H7402**

Configuration

Motor configuration CSCR
 Power supply (nominal) 220-240V/50Hz 1~
 Refrigerant R290
 Application LBP
 Voltage range 198-254V
 Starting torque HST
 Approvals VDE

Electrical accessories / wiring diagram

CSCR



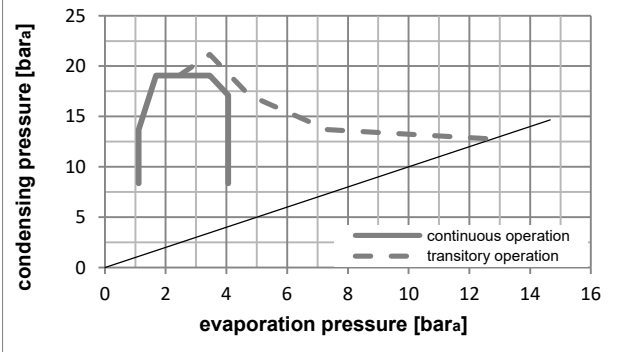
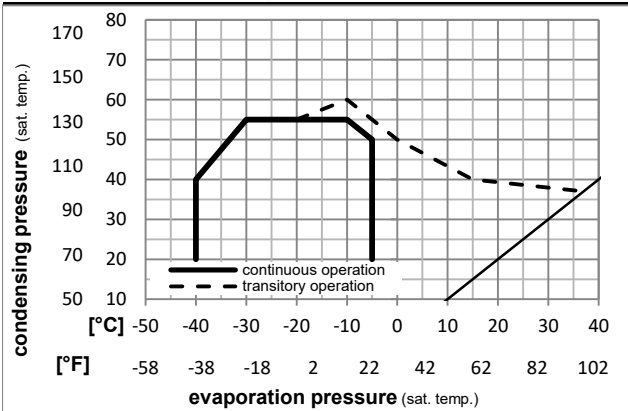
Ambient/ machine room temperatures minimum /maximum

Ambient temperature range: 10 - 43°C / 50 - 110°F

Machine room temperature range: 10 - 48°C / 50 - 119°F

Compressor cooling: fan 3m/s

Operation pressure range



Components

a6	NL starter kit	117U8201
c	start capacitor (80µF)	117U5353
e	run cap (10µF, 6.3mm,c.length 280mm)	117-7166
b	cover terminal board + clamp	117U1038
e1	retaining clamp	117-0314
	screw M4x8mm	117-0301
d	cord relief	103N1007

Model

Designation **NLE14LNDX** **220-240V/50Hz** Conf. 1 Sales code: **105H7402**

Optimization + standard conditions

R290, 220V/50Hz, CSCR, fan 3m/s, VDE

	pe	pc	RGT	Tliq	Cooling capacity	COP	EER	P1	I	Ref. mass flow		
	[°C]	[°C]	[°C]	[°C]	[W]	[W/W]	[Btu/Wh]	[W]	[A]	[kg/h]		
Evaporating pressure (saturation temperature)	-23	54	32	32	713,5	1,68	5,73	425,1	2,03	7,23	ASHRAE LBP	
Condensing pressure (saturation temperature)	-10	130	90	90	2437	1,68	5,73	425,1	2,03	7,23	ASHRAE LBP	
Return gas temp.					614,0	1,68	5,73	425,1	2,03	7,23	ASHRAE LBP	
Liquid temp.					614,0	1,68	5,73	425,1	2,03	7,23	ASHRAE LBP	
Power consumption					713,5	1,68	5,73	425,1	2,03	7,23	ASHRAE LBP	
Current consumption					713,5	1,68	5,73	425,1	2,03	7,23	ASHRAE LBP	
Ref. mass flow					713,5	1,68	5,73	425,1	2,03	7,23	ASHRAE LBP	
	[°F]	[°F]	[°F]	[°F]	[Btu/h]	[kcal/h]	[W/W]	[Btu/Wh]	[kcal/Wh]	[W]	[A]	[kg/h]
	-10	130	90	90	2437	1,68	5,73	425,1	2,03	7,23	ASHRAE LBP	
	-25	55	32	55	537,4	1,31	4,47	410,6	1,97	6,69	cecomaf LBP	
	-13	131	90	131	1835	1,31	4,47	410,6	1,97	6,69	cecomaf LBP	
	-35	40	20	40	401,1	1,35	4,61	297,2	1,51	4,58	EN12900 LBP	
	-31	104	68	104	1370	1,35	4,61	297,2	1,51	4,58	EN12900 LBP	
	-23	49	4,4	49	573,5	1,40	4,78	409,7	1,96	7,94	ARI540 LBP	
	-10	120	40	120	1959	1,40	4,78	409,7	1,96	7,94	ARI540 LBP	
	-23	41	32	32	752,0	1,96	6,68	384,6	1,85	7,61	AHAM LBP	
	-10	105	90	90	2568	1,96	6,68	384,6	1,85	7,61	AHAM LBP	
	-35	45	32	45	385,6	1,26	4,31	305,4	1,54	4,32	opt	
	-31	113	90	113	1317	1,26	4,31	305,4	1,54	4,32	opt	

Performance tables

R290, 220V/50Hz, CSCR, fan 3m/s, VDE

	pe		Cooling capacity			COP	EER	P1	I	m	
	[°C]	[°F]	[W]	[Btu/h]	[kcal/h]	[W/W]	[Btu/Wh]	[kcal/Wh]	[W]	[A]	[kg/h]
[°C / °F]	-40	-40	293,1	1001	252,3	1,10	3,75	0,94	267,2	1,41	3,28
cond. pressure	-35	-31	385,6	1317	331,8	1,26	4,31	1,09	305,4	1,54	4,32
pc= 45/113	-30	-22	493,5	1685	424,7	1,43	4,89	1,23	344,9	1,69	5,55
return gas temp.	-25	-13	618,6	2113	532,4	1,61	5,49	1,38	385,0	1,85	6,98
RGT= 32/90	-20	-4	762,7	2605	656,4	1,80	6,13	1,54	424,9	2,03	8,64
liquid temp	-15	5	927,5	3168	798,2	2,00	6,83	1,72	463,7	2,21	10,55
Tliq= 45/113	-5	23	1326,2	4529	1141,4	2,48	8,46	2,13	535,4	2,54	15,27
[°C / °F]	-40	-40	241,7	825	208,0	0,87	2,97	0,75	277,6	1,44	2,98
cond. pressure	-35	-31	327,0	1117	281,4	1,02	3,50	0,88	319,3	1,59	4,04
pc= 55/131	-30	-22	425,0	1451	365,7	1,17	3,99	1,01	363,9	1,77	5,27
return gas temp	-25	-13	537,4	1835	462,5	1,31	4,47	1,13	410,6	1,97	6,69
RGT= 32/90	-20	-4	666,0	2274	573,1	1,45	4,96	1,25	458,7	2,19	8,33
liquid temp	-15	5	812,5	2775	699,2	1,60	5,47	1,38	507,5	2,41	10,22
Tliq= 55/131	-5	23	1166,3	3983	1003,8	1,93	6,60	1,66	603,6	2,85	14,86