

Model

Designation	NLE14LNDX	220-240V/50Hz 1~	Sales code:	105H7412
-------------	------------------	-------------------------	-------------	-----------------

Compressor design

Oil type	Polyolester	Refrigerant(s)	R290
Oil viscosity	32cSt	Displacement	13,5cm ³ / 0,82cu.in
Oil quantity	298cm ³ / 10,1fl.oz	Compressors on pallet	
Refr. charge - tech. limit	300g / 10,6oz		
Free gas volume comp.	2360cm ³ / 79,8fl.oz		
Weight	11,8kg / 26lbs		
Motor protection	external		
Winding resistance main	7,5Ω (at 25°C)		
Winding resistance aux	12,9Ω (at 25°C)		
Max. winding temp.	125°C / 257°F		
Max. discharge temp.	130°C / 266°F		



General - Configurations with NLE14LNDX

	Conf. 1
Motor configuration	CSCR
Power supply (nominal)	220-240V/50Hz
Number of phases	1
Voltage range	198-254V
Approvals	VDE
Starting torque	HST
Note	Starter kit(relay), cover and cord relief are included and pre-assembled.

Applications with NLE14LNDX

	Conf. 1
Refrigerant	R290
Application	LBP
System cooling	fan 3m/s
Hot gas defrost	OK
Long interval pull down	-/-

Electrical data - Configurations with NLE14LNDX

	Conf. 1
Starting device type	relay
Run capacitor	10μF
Start capacitor	80μF
LRA (locked rotor amps / 4s/ U(N))	16,7A
RLA (rated load amps / 1s/ U(N))	2,2A
Cut in current (U(N))	16,7A

Model

Designation

NLE14LNDX

220-240V/50Hz 1~

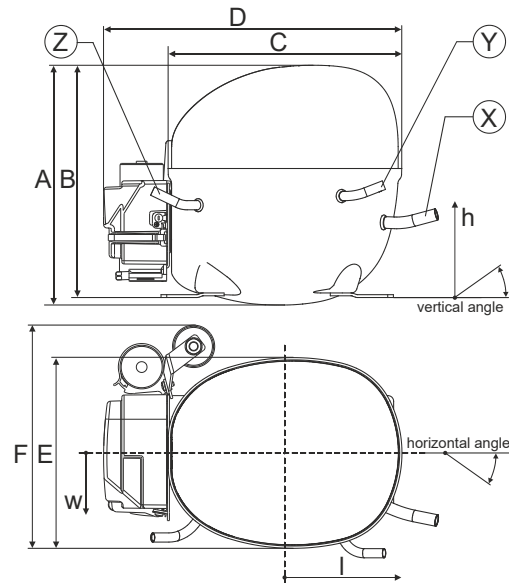
Sales code:

105H7412

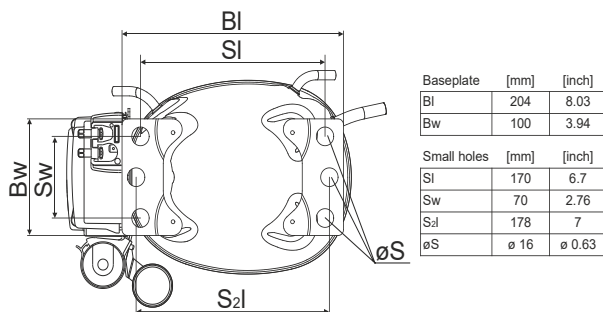
Compressor dimensions

Housing	A Height	209mm / 8,23in
	B Height	203mm / 7,99in
	C Length shell	205mm / 8,07in
	D Length w. cover	262mm / 10,31in
	E Width	166mm / 6,54in

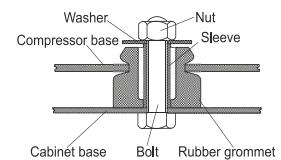
Connectors		Suction	Discharge	Process
		X	Y	Z
Diameter	[mm]	øi 8,11-8,29	øi 6,11-6,29	øi 6,11-6,29
(i:inside, o:outside)	[in]	øi 0,32-0,33	øi 0,24-0,25	øi 0,24-0,25
Material		copper	copper	copper
Horizontal angle	±2°	11°	0°	0°
Vertical angle	±2°	15°	21°	25°
Position l/h/w	[mm]	140/72/59	94/98/87	-109/93/74
	[in]	5,5/2,8/2,3	3,7/3,9/3,4	-4,3/3,7/2,9
Straight tube l.	[mm]	12	12	12
	[in]	0,5	0,5	0,5



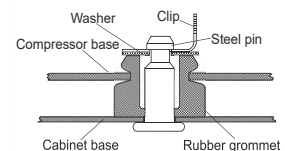
Compressor fixation



Bolt joint



Snap-on



Mounting accessories	one comp.	multi pack
Bolt joint M6 ø16mm	118-1917	118-1918
Bolt joint ø1/4" ø16mm	118-1946	
Snap-on ø7,3 ø16mm	118-1947	118-1919

Application notes

Provision for PE Grounding is located at the PE Stamp on the compressor

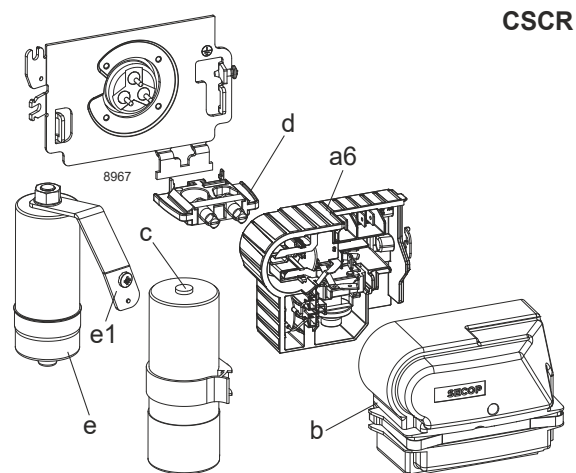
Model

Designation	NLE14LNDX	220-240V/50Hz	Conf. 1	Sales code:	105H7412
-------------	------------------	----------------------	---------	-------------	-----------------

Configuration

Motor configuration	CSCR
Power supply (nominal)	220-240V/50Hz 1~
Refrigerant	R290
Application	LBP
Voltage range	198-254V
Starting torque	HST
Approvals	VDE

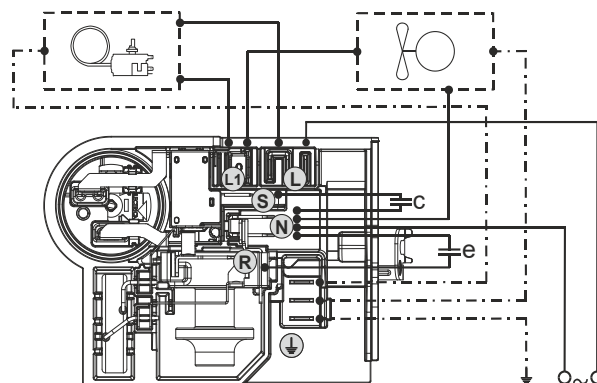
Electrical accessories / wiring diagram



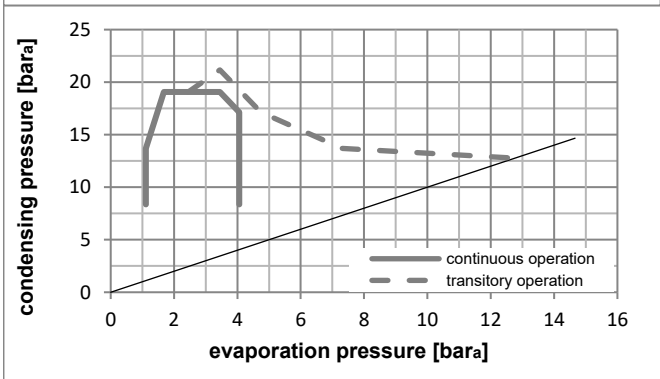
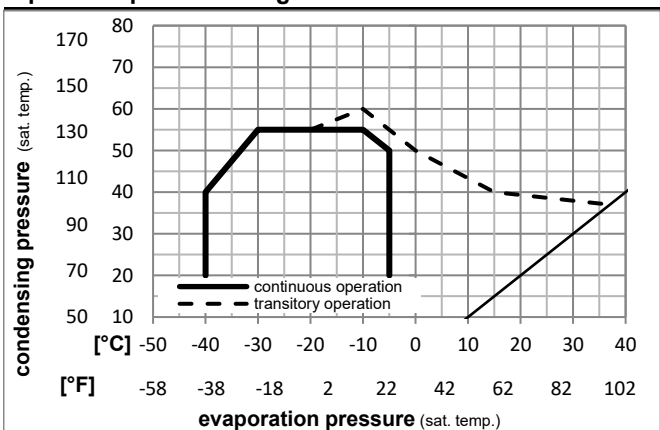
CSCR

Ambient/ machine room temperatures minimum /maximum

Ambient temperature range:	10 - 43°C / 50 - 110°F
Machine room temperature range:	10 - 48°C / 50 - 119°F
Compressor cooling:	fan 3m/s



Operation pressure range



Components (Starter kit (a6)+cover (b) +cord relief (d): pre assembled)

a6	NL starter kit	117U8201
c	start capacitor (80µF)	117U5353
e	run cap (10µF, 6.3mm,c.length 280mm)	117-7166
b	cover terminal board + clamp	117U1038
e1	retaining clamp	117-0314
	screw M4x8mm	117-0301
d	cord relief	103N1007

Model

Designation **NLE14LNDX** **220-240V/50Hz** Conf. 1 Sales code: **105H7412**

Optimization + standard conditions

R290, 220V/50Hz, CSCR, fan 3m/s, VDE

		Evaporating pressure (saturation temperature)				Cooling capacity			COP			EER			Power consumption			ASHRAE LBP
		Condensing pressure (saturation temperature)										Current consumption			Ref. mass flow			
		Return gas temp.										I				m		
		Liquid temp.										P1					[kg/h]	
		pe	pc	RGT	Tliq	[W]	[Btu/h]	[kcal/h]	[W/W]	[Btu/Wh]	[kcal/Wh]	[W]	[A]					
[°C]	[°F]																	
-23	54	32	32		713,5	2437	614,0	1,68	5,73	1,44	425,1	2,03	7,23					
-10	130	90	90															
-25	55	32	55		537,4	1835	462,5	1,31	4,47	1,13	410,6	1,97	6,69					
-13	131	90	131															
-35	40	20	40		401,1	1370	345,2	1,35	4,61	1,16	297,2	1,51	4,58					
-31	104	68	104															
-23	49	4,4	49		573,5	1959	493,5	1,40	4,78	1,20	409,7	1,96	7,94					
-10	120	40	120															
-23	41	32	32		752,0	2568	647,2	1,96	6,68	1,68	384,6	1,85	7,61					
-10	105	90	90															
-35	45	32	45		385,6	1317	331,8	1,26	4,31	1,09	305,4	1,54	4,32					
-31	113	90	113															

Performance tables

R290, 220V/50Hz, CSCR, fan 3m/s, VDE

	pe		Cooling capacity			COP			EER			P1	I	m
	[°C]	[°F]	[W]	[Btu/h]	[kcal/h]	[W/W]	[Btu/Wh]	[kcal/Wh]	[W]	[A]	[kg/h]			
[°C / °F]	-40	-40	293,1	1001	252,3	1,10	3,75	0,94	267,2	1,41	3,28			
cond. pressure	-35	-31	385,6	1317	331,8	1,26	4,31	1,09	305,4	1,54	4,32			
pc= 45/113	-30	-22	493,5	1685	424,7	1,43	4,89	1,23	344,9	1,69	5,55			
return gas temp.	-25	-13	618,6	2113	532,4	1,61	5,49	1,38	385,0	1,85	6,98			
RGT= 32/90	-20	-4	762,7	2605	656,4	1,80	6,13	1,54	424,9	2,03	8,64			
liquid temp	-15	5	927,5	3168	798,2	2,00	6,83	1,72	463,7	2,21	10,55			
Tliq= 45/113	-5	23	1326,2	4529	1141,4	2,48	8,46	2,13	535,4	2,54	15,27			
[°C / °F]	-40	-40	241,7	825	208,0	0,87	2,97	0,75	277,6	1,44	2,98			
cond. pressure	-35	-31	327,0	1117	281,4	1,02	3,50	0,88	319,3	1,59	4,04			
pc= 55/131	-30	-22	425,0	1451	365,7	1,17	3,99	1,01	363,9	1,77	5,27			
return gas temp	-25	-13	537,4	1835	462,5	1,31	4,47	1,13	410,6	1,97	6,69			
RGT= 32/90	-20	-4	666,0	2274	573,1	1,45	4,96	1,25	458,7	2,19	8,33			
liquid temp	-15	5	812,5	2775	699,2	1,60	5,47	1,38	507,5	2,41	10,22			
Tliq= 55/131	-5	23	1166,3	3983	1003,8	1,93	6,60	1,66	603,6	2,85	14,86			