

## Model

Designation	<b>NLE15LNDX</b>	<b>220-240V/50Hz 1~</b>	Sales code:	<b>105H7510</b>
-------------	------------------	-------------------------	-------------	-----------------

## Compressor design

Oil type	Polyolester	Refrigerant(s)	<b>R290</b>
Oil viscosity	32cSt	Displacement	14,6cm <sup>3</sup> / 0,89cu.in
Oil quantity	298cm <sup>3</sup> / 10,1fl.oz	Compressors on pallet	
Refr. charge - tech. limit	300g / 10,6oz		
Free gas volume comp.	2360cm <sup>3</sup> / 79,8fl.oz		
Weight	11,8kg / 26lbs		
Motor protection	external		
Winding resistance main	7,1Ω (at 25°C)		
Winding resistance aux	12,4Ω (at 25°C)		
Max. winding temp.	125°C / 257°F		
Max. discharge temp.	130°C / 266°F		



## General - Configurations with NLE15LNDX

	<b>Conf. 1</b>
Motor configuration	CSCR
Power supply (nominal)	220-240V/50Hz
Number of phases	1
Voltage range	198-254V
Approvals	VDE
Starting torque	HST
Note	Starter kit(relay), cover and cord relief are included and pre-assembled.

## Applications with NLE15LNDX

	<b>Conf. 1</b>
Refrigerant	R290
Application	LBP
System cooling	fan 3m/s
Hot gas defrost	OK
Long interval pull down	-/-

## Electrical data - Configurations with NLE15LNDX

	<b>Conf. 1</b>
Starting device type	relay
Run capacitor	10μF
Start capacitor	80μF
LRA (locked rotor amps / 4s/ U(N))	16,8A
RLA (rated load amps / 1s/ U(N))	2,3A
Cut in current (U(N))	16,8A

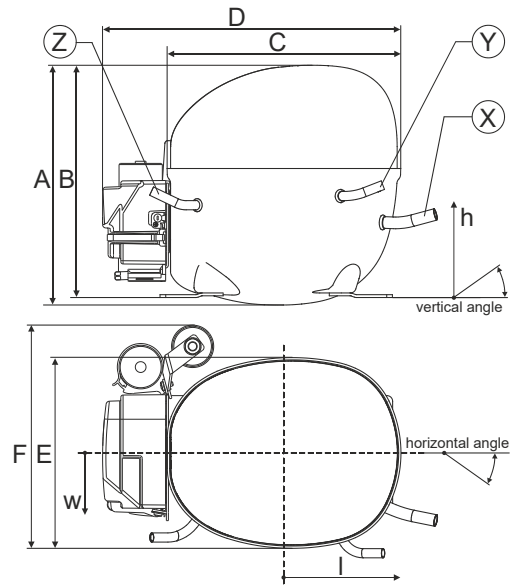
## Model

Designation	<b>NLE15LNDX</b>	<b>220-240V/50Hz 1~</b>	Sales code:	<b>105H7510</b>
-------------	------------------	-------------------------	-------------	-----------------

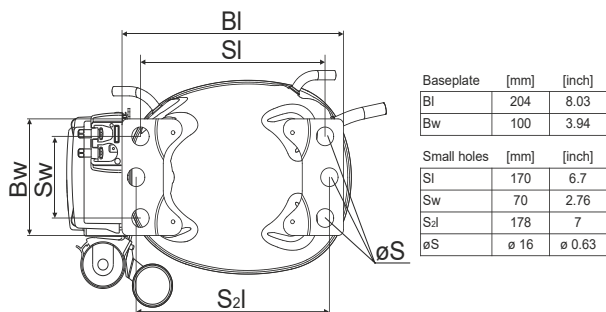
## Compressor dimensions

<b>Housing</b>	A Height	209mm / 8,23in
	B Height	203mm / 7,99in
	C Length shell	205mm / 8,07in
	D Length w. cover	262mm / 10,31in
	E Width	166mm / 6,54in

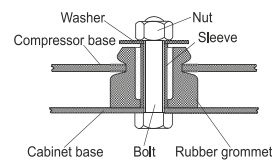
Connectors		Suction	Discharge	Process
		X	Y	Z
Diameter	[mm]	øi 8,11-8,29	øi 6,11-6,29	øi 6,11-6,29
(i:inside, o:outside)	[in]	øi 0,32-0,33	øi 0,24-0,25	øi 0,24-0,25
Material		copper	copper	copper
Horizontal angle	±2°	11°	0°	0°
Vertical angle	±2°	15°	21°	25°
Position l/h/w	[mm]	140/72/59	94/98/87	-109/93/74
	[in]	5,5/2,8/2,3	3,7/3,9/3,4	-4,3/3,7/2,9
Straight tube l.	[mm]	12	12	12
	[in]	0,5	0,5	0,5



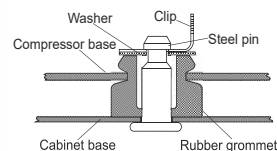
## Compressor fixation



### Bolt joint



### Snap-on



Mounting accessories	one comp.	multi pack
Bolt joint   M6   ø16mm	118-1917	118-1918
Bolt joint   ø1/4"   ø16mm	118-1946	
Snap-on   ø7,3   ø16mm	118-1947	118-1919

## Application notes

Provision for PE Grounding is located at the PE Stamp on the compressor

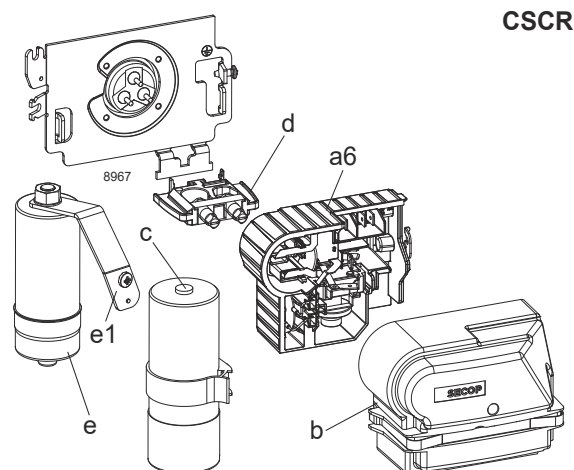
## Model

Designation	<b>NLE15LNDX</b>	<b>220-240V/50Hz</b>	Conf. 1	Sales code:	<b>105H7510</b>
-------------	------------------	----------------------	---------	-------------	-----------------

## Configuration

Motor configuration	CSCR
Power supply (nominal)	220-240V/50Hz 1~
Refrigerant	R290
Application	LBP
Voltage range	198-254V
Starting torque	HST
Approvals	VDE

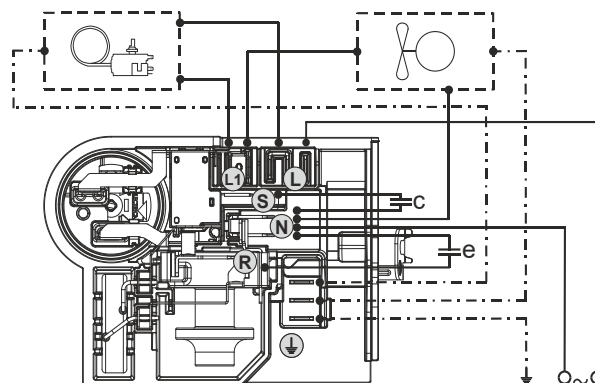
## Electrical accessories / wiring diagram



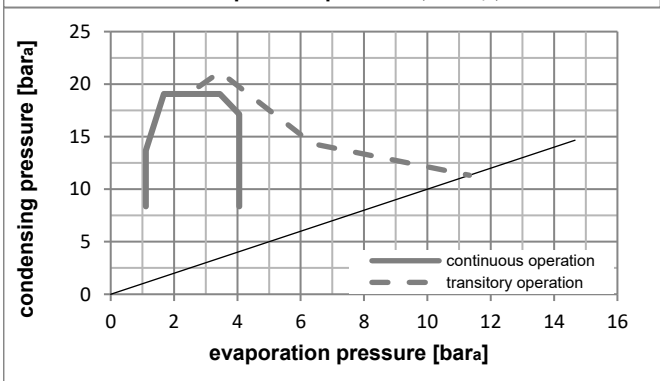
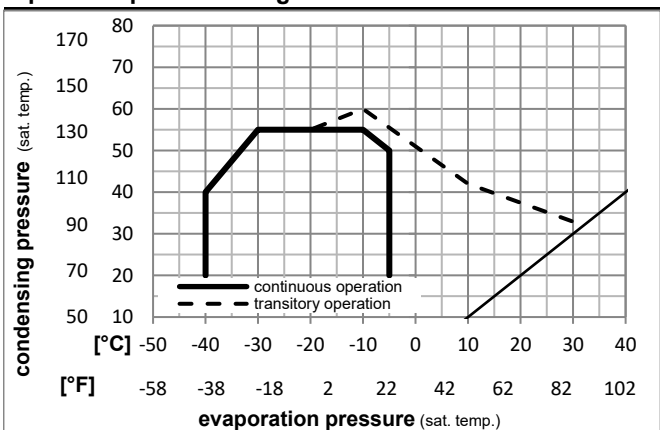
CSCR

## Ambient/ machine room temperatures minimum /maximum

Ambient temperature range:	10 - 43°C / 50 - 110°F
Machine room temperature range:	10 - 48°C / 50 - 119°F
Compressor cooling:	fan 3m/s



## Operation pressure range



Components (Starter kit (a6)+cover (b) +cord relief (d): pre assembled)

a6	NL starter kit	117U8201
c	start capacitor (80µF)	117U5353
e	run cap (10µF, 6.3mm,c.length 280mm)	117-7166
b	cover terminal board + clamp	117U1038
e1	retaining clamp	117-0314
	screw M4x8mm	117-0301
d	cord relief	103N1007

## Model

Designation **NLE15LNDX** **220-240V/50Hz** Conf. 1 Sales code: **105H7510**

## Optimization + standard conditions

R290, 220V/50Hz, CSCR, fan 3m/s, VDE

	Evaporating pressure (saturation temperature)				Cooling capacity			COP	EER			Power consumption			ASHRAE LBP
	pe	pc	RGT	Tliq	[W]	[Btu/h]	[kcal/h]		[W/W]	[Btu/Wh]	[kcal/Wh]	P1	I	m	
	[°C]	[°F]	[°C]	[°F]							[W]	[A]	[kg/h]		
	-23	54	32	32	775,2	2647	667,1	1,71	5,86	1,48	452,1	2,16	7,85	ASHRAE LBP	
	-10	130	90	90											
	-25	55	32	55	585,3	1999	503,7	1,34	4,59	1,16	435,6	2,09	7,29	cecomaf LBP	
	-13	131	90	131											
	-35	40	20	40	437,7	1495	376,7	1,38	4,70	1,18	318,2	1,61	5,00	EN12900 LBP	
	-31	104	68	104											
	-23	49	4,4	49	620,6	2119	534,1	1,41	4,82	1,22	439,3	2,10	8,59	ARI540 LBP	
	-10	120	40	120											
	-23	41	32	32	809,3	2764	696,5	1,94	6,63	1,67	416,7	2,00	8,20	AHAM LBP	
	-10	105	90	90											
	-35	45	32	45	422,4	1442	363,5	1,30	4,44	1,12	324,9	1,64	4,73	opt	
	-31	113	90	113											

## Performance tables

R290, 220V/50Hz, CSCR, fan 3m/s, VDE

	pe		Cooling capacity			COP			EER			P1	I	m
	[°C]	[°F]	[W]	[Btu/h]	[kcal/h]	[W/W]	[Btu/Wh]	[kcal/Wh]	[W]	[A]	[kg/h]			
[°C / °F]	-40	-40	323,1	1103	278,0	1,14	3,91	0,98	282,5	1,50	3,61			
cond. pressure	-35	-31	422,4	1442	363,5	1,30	4,44	1,12	324,9	1,64	4,73			
pc= 45/113	-30	-22	537,0	1834	462,1	1,46	4,97	1,25	368,9	1,80	6,04			
return gas temp.	-25	-13	668,9	2284	575,7	1,62	5,52	1,39	414,1	1,99	7,54			
RGT= 32/90	-20	-4	820,2	2801	705,8	1,78	6,09	1,53	460,1	2,20	9,29			
liquid temp	-15	5	992,7	3390	854,3	1,96	6,69	1,69	506,5	2,41	11,29			
Tliq= 45/113	-5	23	1409,6	4814	1213,2	2,35	8,03	2,02	599,4	2,84	16,23			
[°C / °F]	-40	-40	266,4	910	229,2	0,92	3,15	0,79	288,9	1,52	3,28			
cond. pressure	-35	-31	360,1	1230	309,9	1,07	3,67	0,92	335,1	1,68	4,45			
pc= 55/131	-30	-22	465,7	1591	400,8	1,21	4,14	1,04	384,1	1,87	5,78			
return gas temp	-25	-13	585,3	1999	503,7	1,34	4,59	1,16	435,6	2,09	7,29			
RGT= 32/90	-20	-4	720,9	2462	620,4	1,47	5,03	1,27	489,3	2,33	9,02			
liquid temp	-15	5	874,3	2986	752,5	1,60	5,48	1,38	544,8	2,58	10,99			
Tliq= 55/131	-5	23	1243,1	4245	1069,8	1,88	6,44	1,62	659,5	3,11	15,84			