

Model

Designation	SCE21MNIX	220-240V/60Hz 1~	Sales code:	104H8151
-------------	------------------	-------------------------	-------------	-----------------

Compressor design

Oil type	Polyolester	Refrigerant(s)	R290
Oil viscosity	32cSt	Displacement	21cm ³ / 1,28cu.in
Oil quantity	500cm ³ / 16,9fl.oz	Compressors on pallet	48
Refr. charge - tech. limit	500g / 17,6oz		
Free gas volume comp.	3150cm ³ / 106,5fl.oz		
Weight	14,9kg / 32,8lbs		
Motor protection	1# internal		
Winding resistance main	2,2Ω (at 25°C)		
Winding resistance aux	5,3Ω (at 25°C)		
Max. winding temp.	125°C / 257°F		
Max. discharge temp.	140°C / 284°F		



General - Configurations with SCE21MNIX

	Conf. 1
Motor configuration	CSCR
Power supply (nominal)	220-240V/60Hz
Number of phases	1
Voltage range	195-254V
Approvals	UL, KC, CB
Starting torque	HST
Note	Starter kit(relay), cover and cord relief are included and pre-assembled.

Applications with SCE21MNIX

	Conf. 1
Refrigerant	R290
Application	MBP
System cooling	fan 3m/s
Hot gas defrost	OK
Long interval pull down	OK

Electrical data - Configurations with SCE21MNIX

	Conf. 1
Starting device type	relay
Run capacitor	15μF
Start capacitor	60μF
LRA (locked rotor amps / 4s/ U(N))	31,8A
RLA (rated load amps / 1s/ U(N))	4A
Cut in current (U(N))	

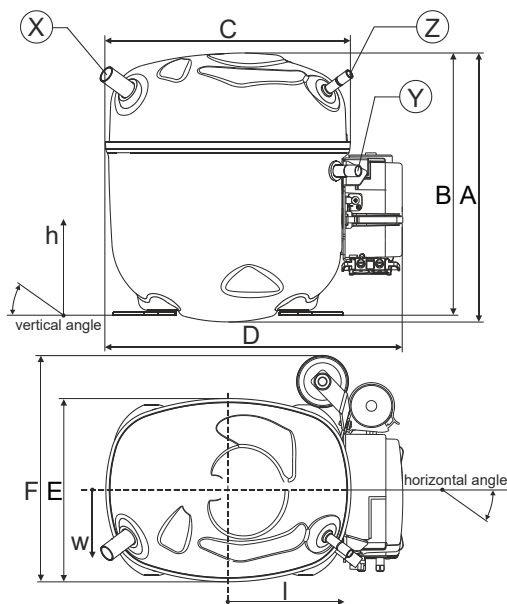
Model

Designation	SCE21MNIX	220-240V/60Hz 1~	Sales code:	104H8151
-------------	------------------	-------------------------	-------------	-----------------

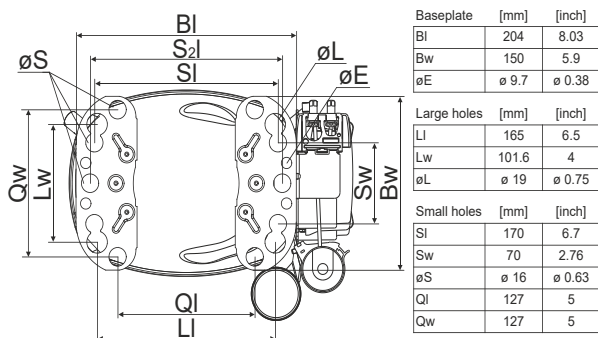
Compressor dimensions

Housing	A Height	236,4mm / 9,31in
	B Height	230,6mm / 9,08in
	C Length shell	217mm / 8,54in
	D Length w. cover	263,4mm / 10,37in
	E Width	161,1mm / 6,34in
	F Width with equipment	199mm / 7,83in

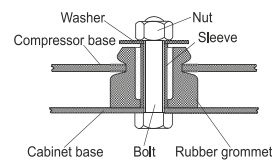
	Suction		Discharge		Process	
	X		Y		Z	
Diameter [mm]	øi 9,54-9,72		øi 6,41-6,59		øi 6,41-6,59	
(i:inside, o:outside) [in]	øi 0,38-0,38		øi 0,25-0,26		øi 0,25-0,26	
Material	copper		copper		copper	
Horizontal angle ±2°	37°		37°		37°	
Vertical angle ±2°	36°		0°		36°	
Position l/h/w [mm]	-111/212/57		116/127/81		110/94/72	
[in]	-4,4/8,3/2,2		4,5/5/3,2		4,3/3,7/2,8	
Straight tube l. [mm]	12		12		12	
[in]	0,5		0,5		0,5	



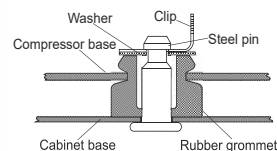
Compressor fixation



Bolt joint



Snap-on



Mounting accessories	one comp.	multi pack
Bolt joint M6 ø16mm	118-1917	118-1918
Bolt joint ø1/4" ø16mm	118-1946	
Bolt joint ø1/4" ø19mm	118-1949	
Snap-on ø7,3 ø16mm	118-1947	118-1919

Application notes

Provision for PE Grounding is located at the PE Stamp on the compressor

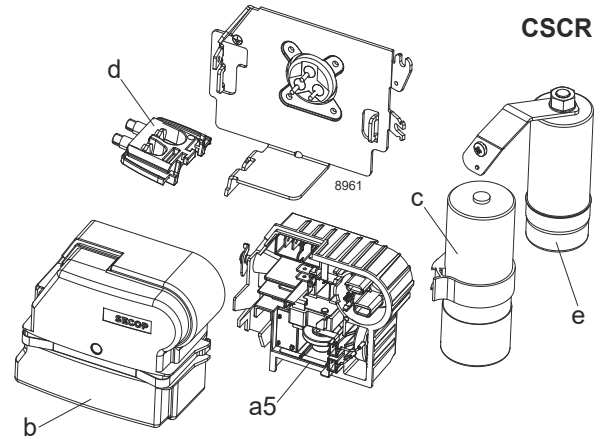
Model

Designation	SCE21MNIX	220-240V/60Hz	Conf. 1	Sales code:	104H8151
-------------	------------------	----------------------	---------	-------------	-----------------

Configuration

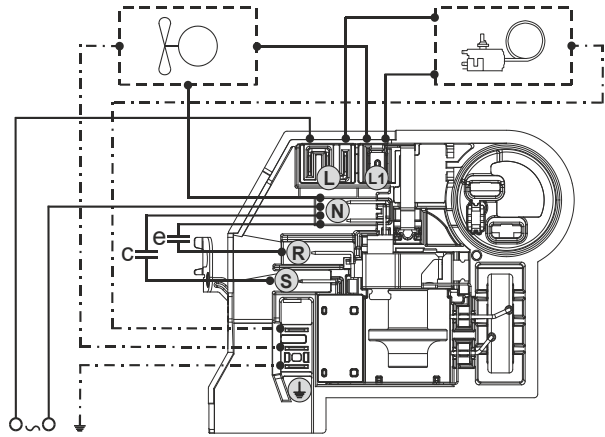
Motor configuration	CSCR
Power supply (nominal)	220-240V/60Hz 1~
Refrigerant	R290
Application	MBP
Voltage range	195-254V
Starting torque	HST
Approvals	UL
	KC
	CB

Electrical accessories / wiring diagram

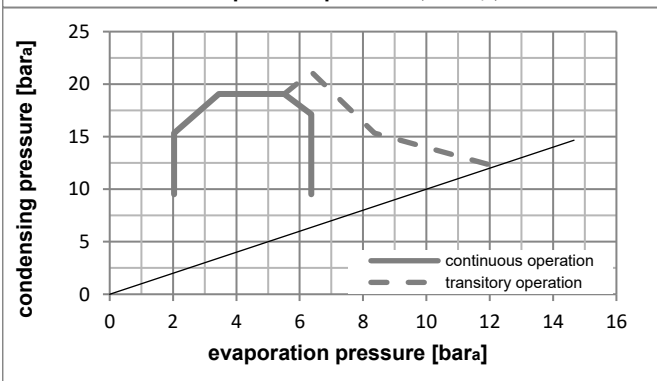
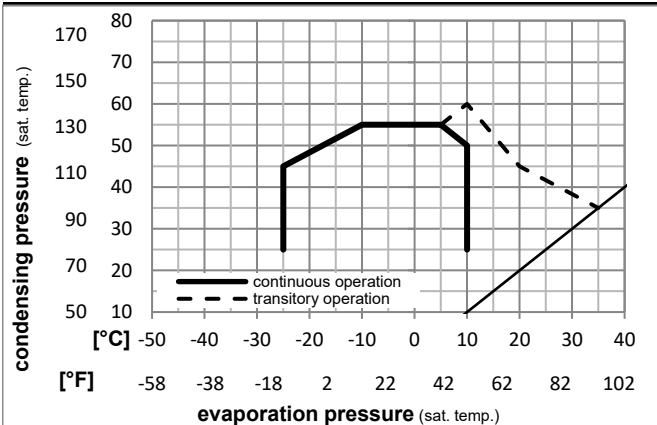


Ambient/ machine room temperatures minimum /maximum

Ambient temperature range:	10 - 43°C / 50 - 110°F
Machine room temperature range:	10 - 48°C / 50 - 119°F
Compressor cooling:	fan 3m/s



Operation pressure range



Components (Starter kit (a5)+cover (b) +cord relief (d): pre assembled)

a5	SC starter kit	117U8102
b	cover terminal board + clamp	117U1036
c	start capacitor (60µF)	117U5351
e	run capacitor (15µF, 6.3mm)	117-7167
e1	retaining clamp	117-0313
	screw M4x8mm	117-0301
d	cord relief	103N1007

Model

Designation **SCE21MNIX** **220-240V/60Hz** Conf. 1 Sales code: **104H8151**

Optimization + standard conditions

R290, 230V/60Hz, CSCR, fan 3m/s, UL, KC, CB

		Evaporating pressure (saturation temperature)				Cooling capacity			COP			EER			Power consumption			ASHRAE MBP
		Condensing pressure (saturation temperature)				Return gas temp.			Liqud temp.			Current consumption			Ref. mass flow			
		pe	pc	RGT	Tliq	[W]	[Btu/h]	[kcal/h]	[W/W]	[Btu/Wh]	[kcal/Wh]	P1	I	m				
[°C]	[°F]											[W]	[A]	[kg/h]				
-7	20	54	35	46	2076,2	7090	1786,8	2,06	7,05	1,78	1006,4	5,39	23,68	ASHRAE MBP				
-10	14	55	32	55	1640,3	5602	1411,7	1,73	5,90	1,49	949,1	5,16	20,75	cecomaf MBP				
-10	14	45	20	45	1900,7	6491	1635,8	2,17	7,42	1,87	875,3	4,86	23,34	EN12900 MBP				
-7	20	49	18	49	1997,5	6822	1719,1	2,09	7,14	1,80	955,7	5,18	25,92	ARI540 MBP				
-10	14	45	32	45	1978,7	6758	1702,9	2,26	7,72	1,95	875,3	4,86	22,64	opt				
-25	-13	45	32	45	1017,6	3475	875,7	1,56	5,32	1,34	653,1	4,07	11,48	opt				

Performance tables

R290, 230V/60Hz, CSCR, fan 3m/s, UL, KC, CB

	pe		Cooling capacity			COP			EER			P1	I	m
	[°C]	[°F]	[W]	[Btu/h]	[kcal/h]	[W/W]	[Btu/Wh]	[kcal/Wh]	[W]	[A]	[kg/h]			
[°C / °F]	-25	-13	1017,6	3475	875,7	1,56	5,32	1,34	653,1	4,07	11,48			
cond. pressure	-20	-4	1307,2	4464	1125,0	1,79	6,10	1,54	731,9	4,33	14,80			
pc= 45/113	-15	5	1626,5	5555	1399,8	2,02	6,89	1,74	806,6	4,60	18,51			
return gas temp.	-10	14	1978,7	6758	1702,9	2,26	7,72	1,95	875,3	4,86	22,64			
RGT= 32/90	0	32	2794,2	9543	2404,7	2,83	9,67	2,44	986,5	5,31	32,41			
liquid temp	5	41	3263,7	11146	2808,8	3,18	10,88	2,74	1024,9	5,47	38,18			
Tliq= 45/113	10	50	3778,5	12904	3251,8	3,60	12,30	3,10	1049,2	5,57	44,65			
[°C / °F]	-25	-13	792,0	2705	681,6	1,21	4,14	1,04	653,2	4,06	9,86			
cond. pressure	-20	-4	1049,5	3584	903,2	1,39	4,75	1,20	753,9	4,41	13,13			
pc= 55/131	-15	5	1331,3	4547	1145,7	1,56	5,33	1,34	853,2	4,79	16,74			
return gas temp	-10	14	1640,3	5602	1411,7	1,73	5,90	1,49	949,1	5,16	20,75			
RGT= 32/90	0	32	2352,6	8034	2024,7	2,10	7,16	1,80	1122,8	5,88	30,22			
liquid temp	5	41	2762,1	9433	2377,1	2,31	7,88	1,99	1196,6	6,19	35,82			
Tliq= 55/131	10	50	3211,2	10967	2763,6	2,55	8,71	2,20	1259,0	6,47	42,10			