

Model

Designation	SCE23LNIX	220-240V/60Hz 1~	Sales code:	104H8350
-------------	------------------	-------------------------	-------------	-----------------

Compressor design

Oil type	Polyolester	Refrigerant(s)	R290
Oil viscosity	32cSt	Displacement	23cm ³ / 1,4cu.in
Oil quantity	500cm ³ / 16,9fl.oz	Compressors on pallet	48
Refr. charge - tech. limit	500g / 17,6oz		
Free gas volume comp.	3150cm ³ / 106,5fl.oz		
Weight	14,9kg / 32,8lbs		
Motor protection	1# internal		
Winding resistance main	2,8Ω (at 25°C)		
Winding resistance aux	10,9Ω (at 25°C)		
Max. winding temp.	125°C / 257°F		
Max. discharge temp.	140°C / 284°F		



General - Configurations with SCE23LNIX

	Conf. 1
Motor configuration	CSCR
Power supply (nominal)	220-240V/60Hz
Number of phases	1
Voltage range	195-254V
Approvals	UL, KC, CB
Starting torque	HST
Note	Starter kit(relay), cover and cord relief are included and pre-assembled.

Applications with SCE23LNIX

	Conf. 1
Refrigerant	R290
Application	LBP
System cooling	fan 3m/s
Hot gas defrost	OK
Long interval pull down	OK

Electrical data - Configurations with SCE23LNIX

	Conf. 1
Starting device type	relay
Run capacitor	10μF
Start capacitor	60μF
LRA (locked rotor amps / 4s/ U(N))	26A
RLA (rated load amps / 1s/ U(N))	2,9A
Cut in current (U(N))	

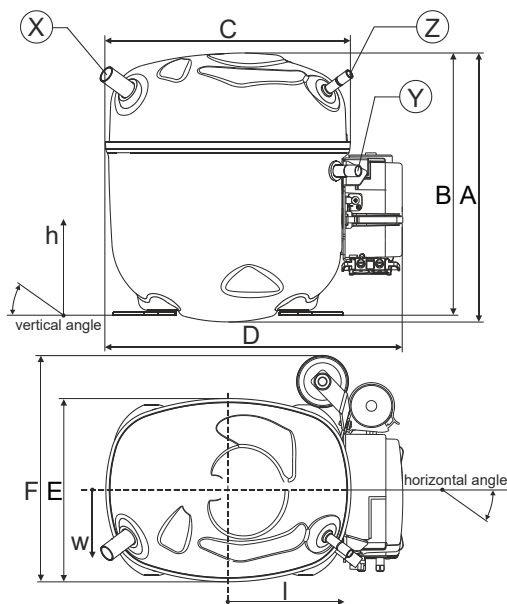
Model

Designation	SCE23LNIX	220-240V/60Hz 1~	Sales code:	104H8350
-------------	------------------	-------------------------	-------------	-----------------

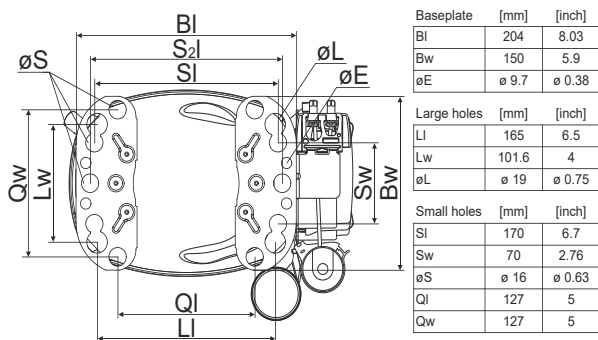
Compressor dimensions

Housing	A Height	236,4mm / 9,31in
	B Height	230,6mm / 9,08in
	C Length shell	217mm / 8,54in
	D Length w. cover	263,4mm / 10,37in
	E Width	161,1mm / 6,34in
	F Width with equipment	199mm / 7,83in

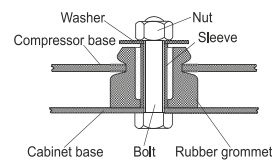
	Suction		Discharge		Process	
	X		Y		Z	
Diameter [mm]	øi 12,81-12,99		øi 8,11-8,29		øi 6,41-6,59	
(i:inside, o:outside) [in]	øi 0,5-0,51		øi 0,32-0,33		øi 0,25-0,26	
Material	copper		copper		copper	
Horizontal angle ±2°	37°		37°		37°	
Vertical angle ±2°	36°		0°		36°	
Position l/h/w [mm]	-111/212/57		116/127/81		110/94/72	
[in]	-4,4/8,3/2,2		4,5/5/3,2		4,3/3,7/2,8	
Straight tube l. [mm]	12		12		12	
[in]	0,5		0,5		0,5	



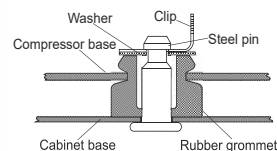
Compressor fixation



Bolt joint



Snap-on



Mounting accessories	one comp.	multi pack
Bolt joint M6 ø16mm	118-1917	118-1918
Bolt joint ø1/4" ø16mm	118-1946	
Bolt joint ø1/4" ø19mm	118-1949	
Snap-on ø7,3 ø16mm	118-1947	118-1919

Application notes

Provision for PE Grounding is located at the PE Stamp on the compressor

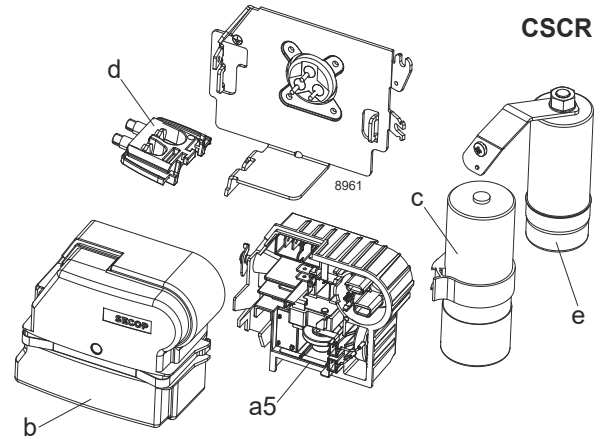
Model

Designation	SCE23LNIX	220-240V/60Hz	Conf. 1	Sales code:	104H8350
-------------	------------------	----------------------	---------	-------------	-----------------

Configuration

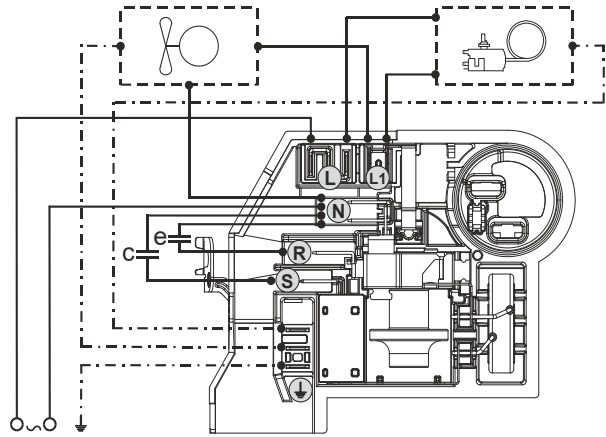
Motor configuration	CSCR
Power supply (nominal)	220-240V/60Hz 1~
Refrigerant	R290
Application	LBP
Voltage range	195-254V
Starting torque	HST
Approvals	UL
	KC
	CB

Electrical accessories / wiring diagram

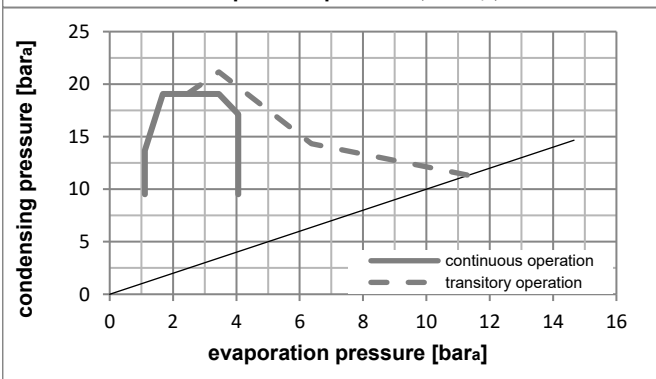
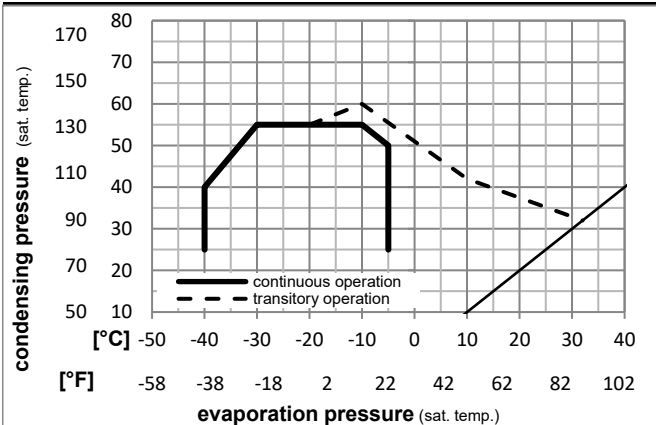


Ambient/ machine room temperatures minimum /maximum

Ambient temperature range:	10 - 43°C / 50 - 110°F
Machine room temperature range:	10 - 48°C / 50 - 119°F
Compressor cooling:	fan 3m/s



Operation pressure range



Components (Starter kit (a5)+cover (b) +cord relief (d): pre assembled)

a5	SC starter kit	117U8100
b	cover terminal board + clamp	117U1036
c	start capacitor (60µF)	117U5351
e	run cap (10µF, 6.3mm,c.length 280mm)	117-7166
e1	retaining clamp	117-0313
	screw M4x8mm	117-0301
d	cord relief	103N1007

Model

Designation **SCE23LNIX** **220-240V/60Hz** Conf. 1 Sales code: **104H8350**

Optimization + standard conditions

R290, 230V/60Hz, CSCR, fan 3m/s, UL, KC, CB

	Evaporating pressure (saturation temperature)				Cooling capacity			COP	EER			Power consumption			ASHRAE LBP
	pe	pc	RGT	Tliq	[W]	[Btu/h]	[kcal/h]		[W/W]	[Btu/Wh]	[kcal/Wh]	P1	I	m	
	[°C]	[°F]	[°C]	[°F]							[W]	[A]	[kg/h]		
	-23	54	32	32	1224,2	4181	1053,5	1,57	5,35	1,35	781,7	3,63	12,40	ASHRAE LBP	
	-10	130	90	90											
	-25	55	32	55	906,1	3094	779,8	1,22	4,16	1,05	744,0	3,46	11,28	cecomaf LBP	
	-13	131	90	131											
	-35	40	20	40	710,4	2426	611,3	1,31	4,48	1,13	541,2	2,54	8,12	EN12900 LBP	
	-31	104	68	104											
	-23	49	4,4	49	1030,3	3519	886,7	1,35	4,61	1,16	764,1	3,55	14,26	ARI540 LBP	
	-10	120	40	120											
	-23	41	32	32	1406,5	4804	1210,5	1,95	6,66	1,68	721,0	3,35	14,24	AHAM LBP	
	-10	105	90	90											
	-35	45	32	45	655,9	2240	564,5	1,20	4,10	1,03	546,9	2,57	7,35	opt	
	-31	113	90	113											

Performance tables

R290, 230V/60Hz, CSCR, fan 3m/s, UL, KC, CB

	pe		Cooling capacity			COP	EER			P1	I	m
	[°C]	[°F]	[W]	[Btu/h]	[kcal/h]		[W/W]	[Btu/Wh]	[kcal/Wh]			
[°C / °F]	-40	-40	462,3	1579	397,9	0,99	3,39	0,85	465,6	2,22	5,17	
cond. pressure	-35	-31	655,9	2240	564,5	1,20	4,10	1,03	546,9	2,57	7,35	
pc= 45/113	-30	-22	878,3	3000	755,9	1,39	4,75	1,20	631,7	2,95	9,87	
return gas temp.	-25	-13	1131,6	3865	973,8	1,58	5,39	1,36	717,3	3,34	12,76	
RGT= 32/90	-20	-4	1417,6	4841	1220,0	1,77	6,04	1,52	801,2	3,72	16,05	
liquid temp	-15	5	1738,6	5938	1496,2	1,97	6,74	1,70	880,9	4,09	19,78	
Tliq= 45/113	-5	23	2493,2	8515	2145,7	2,45	8,37	2,11	1017,0	4,73	28,71	
[°C / °F]	-40	-40	334,8	1143	288,1	0,79	2,71	0,68	422,2	2,01	4,13	
cond. pressure	-35	-31	494,2	1688	425,4	0,95	3,23	0,81	522,2	2,45	6,11	
pc= 55/131	-30	-22	684,0	2336	588,6	1,09	3,71	0,93	630,3	2,94	8,48	
return gas temp	-25	-13	906,1	3094	779,8	1,22	4,16	1,05	744,0	3,46	11,28	
RGT= 32/90	-20	-4	1162,5	3970	1000,5	1,35	4,61	1,16	860,6	4,00	14,54	
liquid temp	-15	5	1455,3	4970	1252,5	1,49	5,08	1,28	977,5	4,54	18,30	
Tliq= 55/131	-5	23	2158,4	7371	1857,5	1,80	6,13	1,55	1202,0	5,61	27,50	