

Model

Designation	SCE23MNIX	220-240V/60Hz 1~	Sales code:	104H8340
-------------	------------------	------------------	-------------	-----------------

Compressor design

Oil type	Polyolester	Refrigerant(s)	R290
Oil viscosity	32cSt	Displacement	23cm ³ / 1,4cu.in
Oil quantity	500cm ³ / 16,9fl.oz	Compressors on pallet	48
Refr. charge - tech. limit	500g / 17,6oz		
Free gas volume comp.	3150cm ³ / 106,5fl.oz		
Weight	14,9kg / 32,8lbs		
Motor protection	1# internal		
Winding resistance main	2,2Ω (at 25°C)		
Winding resistance aux	5,3Ω (at 25°C)		
Max. winding temp.	125°C / 257°F		
Max. discharge temp.	140°C / 284°F		



General - Configurations with SCE23MNIX

	Conf. 1
Motor configuration	CSCR
Power supply (nominal)	220-240V/60Hz
Number of phases	1
Voltage range	195-254V
Approvals	UL, KC, CB
Starting torque	HST
Note	Starter kit(relay), cover and cord relief are included and pre-assembled.

Applications with SCE23MNIX

	Conf. 1
Refrigerant	R290
Application	MBP
System cooling	fan 3m/s
Hot gas defrost	OK
Long interval pull down	OK

Electrical data - Configurations with SCE23MNIX

	Conf. 1
Starting device type	relay
Run capacitor	15μF
Start capacitor	80μF
LRA (locked rotor amps / 4s/ U(N))	31,3A
RLA (rated load amps / 1s/ U(N))	3,9A
Cut in current (U(N))	

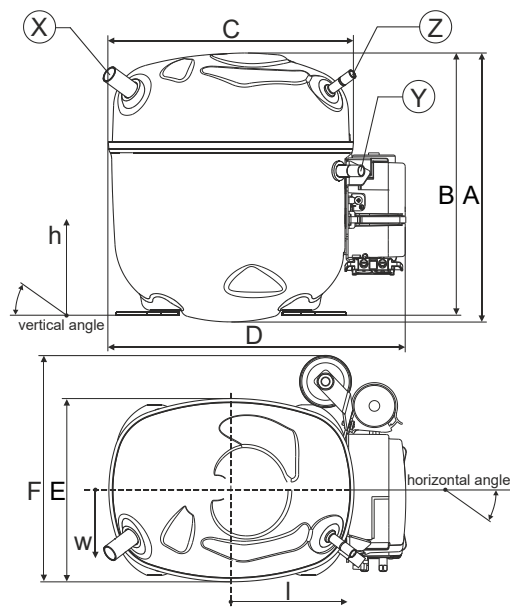
Model

Designation	SCE23MNIX	220-240V/60Hz 1~	Sales code:	104H8340
-------------	------------------	-------------------------	-------------	-----------------

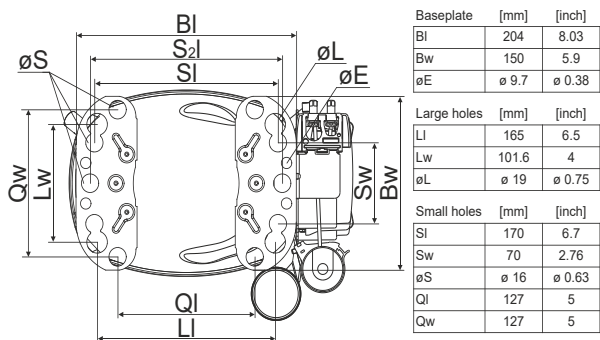
Compressor dimensions

Housing	A Height	236,4mm / 9,31in
	B Height	230,6mm / 9,08in
	C Length shell	217mm / 8,54in
	D Length w. cover	263,4mm / 10,37in
	E Width	161,1mm / 6,34in
	F Width with equipment	199mm / 7,83in

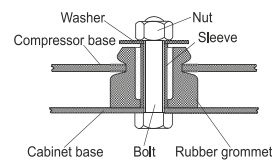
	Suction		Discharge		Process	
	X		Y		Z	
Diameter [mm]	øi 12,81-12,99		øi 8,11-8,29		øi 6,41-6,59	
(i:inside, o:outside) [in]	øi 0,5-0,51		øi 0,32-0,33		øi 0,25-0,26	
Material	copper		copper		copper	
Horizontal angle ±2°	37°		37°		37°	
Vertical angle ±2°	36°		0°		36°	
Position l/h/w [mm]	-111/212/57		116/127/81		110/94/72	
[in]	-4,4/8,3/2,2		4,5/5/3,2		4,3/3,7/2,8	
Straight tube l. [mm]	12		12		12	
[in]	0,5		0,5		0,5	



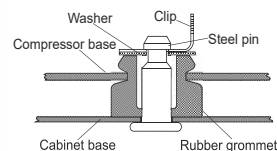
Compressor fixation



Bolt joint



Snap-on



Mounting accessories	one comp.	multi pack
Bolt joint M6 ø16mm	118-1917	118-1918
Bolt joint ø1/4" ø16mm	118-1946	
Bolt joint ø1/4" ø19mm	118-1949	
Snap-on ø7,3 ø16mm	118-1947	118-1919

Application notes

Provision for PE Grounding is located at the PE Stamp on the compressor

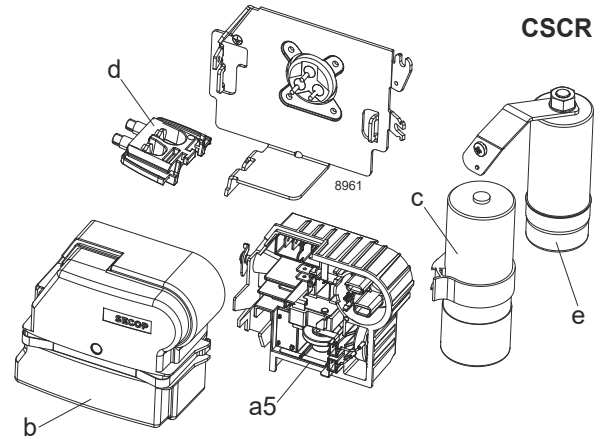
Model

Designation	SCE23MNIX	220-240V/60Hz	Conf. 1	Sales code:	104H8340
-------------	------------------	----------------------	---------	-------------	-----------------

Configuration

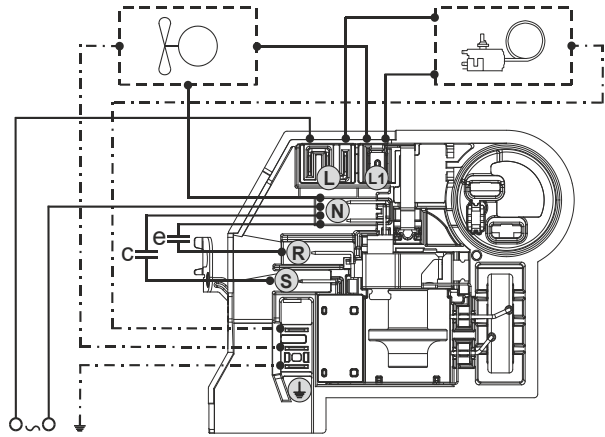
Motor configuration	CSCR
Power supply (nominal)	220-240V/60Hz 1~
Refrigerant	R290
Application	MBP
Voltage range	195-254V
Starting torque	HST
Approvals	UL
	KC
	CB

Electrical accessories / wiring diagram

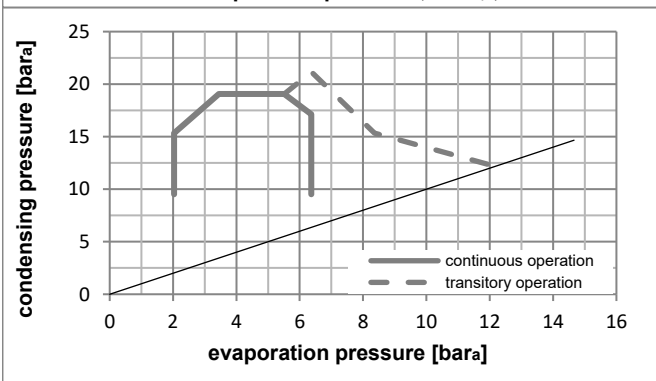
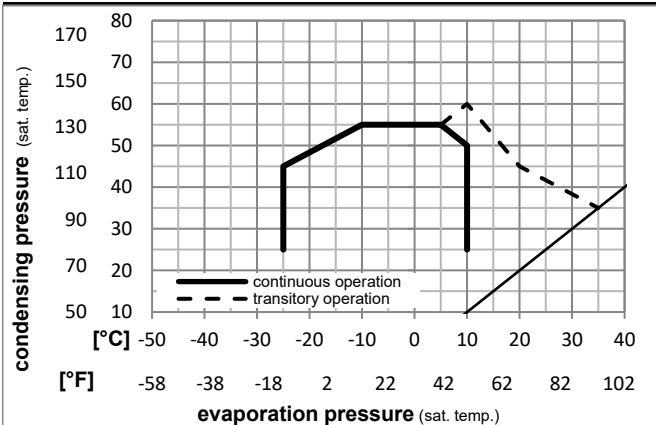


Ambient/ machine room temperatures minimum /maximum

Ambient temperature range:	10 - 43°C / 50 - 110°F
Machine room temperature range:	10 - 48°C / 50 - 119°F
Compressor cooling:	fan 3m/s



Operation pressure range



Components (Starter kit (a5)+cover (b) +cord relief (d): pre assembled)

a5	SC starter kit	117U8102
b	cover terminal board + clamp	117U1036
c	start capacitor (80µF)	117U5352
e	run capacitor (15µF, 6.3mm)	117-7167
e1	retaining clamp	117-0313
	screw M4x8mm	117-0301
d	cord relief	103N1007

Model

Designation **SCE23MNIX** **220-240V/60Hz** Conf. 1 Sales code: **104H8340**

Optimization + standard conditions

R290, 230V/60Hz, CSCR, fan 3m/s, UL, KC, CB

		Evaporating pressure (saturation temperature)				Cooling capacity			COP			EER			Power consumption			
		Condensing pressure (saturation temperature)										Current consumption			Ref. mass flow			
		Return gas temp.																
		Liquid temp.																
		pe	pc	RGT	Tliq	[W]	[Btu/h]	[kcal/h]	[W/W]	[Btu/Wh]	[kcal/Wh]	P1	I	m				
[°C]	[°F]	[°C]	[°F]	[°C]	[°F]							[W]	[A]	[kg/h]				
[°C]	-7	54	35	46	2240,4	7651	1928,1	2,09	7,12	1,80	1073,9	5,08	25,56	ASHRAE MBP				
[°F]	20	130	95	115														
[°C]	-10	55	32	55	1792,6	6122	1542,8	1,75	5,99	1,51	1022,0	4,84	22,68	cecomaf MBP				
[°F]	14	131	90	131														
[°C]	-10	45	20	45	1997,8	6823	1719,3	2,15	7,34	1,85	929,8	4,43	24,53	EN12900 MBP				
[°F]	14	113	68	113														
[°C]	-7	49	18	49	2112,8	7216	1818,3	2,09	7,14	1,80	1011,1	4,79	27,42	ARI540 MBP				
[°F]	20	120	65	120														
[°C]	-10	45	32	45	2079,8	7103	1789,9	2,24	7,64	1,93	929,8	4,43	23,79	opt				
[°F]	14	113	90	113														
[°C]	-25	45	32	45	1089,2	3720	937,3	1,55	5,31	1,34	701,1	3,42	12,28	opt				
[°F]	-13	113	90	113														

Performance tables

R290, 230V/60Hz, CSCR, fan 3m/s, UL, KC, CB

	pe		Cooling capacity			COP			EER			P1	I	m
	[°C]	[°F]	[W]	[Btu/h]	[kcal/h]	[W/W]	[Btu/Wh]	[kcal/Wh]	[W]	[A]	[kg/h]			
[°C / °F]	-25	-13	1089,2	3720	937,3	1,55	5,31	1,34	701,1	3,42	12,28			
cond. pressure	-20	-4	1400,4	4783	1205,2	1,79	6,12	1,54	781,3	3,77	15,86			
pc= 45/113	-15	5	1726,5	5896	1485,9	2,01	6,87	1,73	858,1	4,11	19,64			
return gas temp.	-10	14	2079,8	7103	1789,9	2,24	7,64	1,93	929,8	4,43	23,79			
RGT= 32/90	0	32	2917,4	9963	2510,7	2,77	9,47	2,39	1051,7	4,98	33,84			
liquid temp	5	41	3426,3	11702	2948,7	3,12	10,65	2,68	1098,8	5,19	40,09			
Tliq= 45/113	10	50	4011,9	13701	3452,7	3,54	12,08	3,04	1134,6	5,35	47,41			
[°C / °F]	-25	-13	882,8	3015	759,8	1,23	4,20	1,06	718,4	3,50	10,99			
cond. pressure	-20	-4	1181,2	4034	1016,5	1,43	4,89	1,23	825,7	3,97	14,77			
pc= 55/131	-15	5	1480,3	5056	1274,0	1,60	5,45	1,37	927,4	4,42	18,61			
return gas temp	-10	14	1792,6	6122	1542,8	1,75	5,99	1,51	1022,0	4,84	22,68			
RGT= 32/90	0	32	2506,1	8559	2156,8	2,12	7,23	1,82	1183,2	5,58	32,19			
liquid temp	5	41	2932,0	10013	2523,3	2,35	8,03	2,02	1246,8	5,87	38,02			
Tliq= 55/131	10	50	3420,4	11681	2943,7	2,64	9,01	2,27	1296,9	6,10	44,85			