

Model

Designation	SCE25LNIX	220-240V/60Hz 1~	Sales code:	104H8440
-------------	------------------	------------------	-------------	-----------------

Compressor design

Oil type	Polyolester	Refrigerant(s)	R290
Oil viscosity	32cSt	Displacement	25cm ³ / 1,53cu.in
Oil quantity	500cm ³ / 16,9fl.oz	Compressors on pallet	48
Refr. charge - tech. limit	500g / 17,6oz		
Free gas volume comp.	3150cm ³ / 106,5fl.oz		
Weight	14,9kg / 32,8lbs		
Motor protection	1# internal		
Winding resistance main	2,4Ω (at 25°C)		
Winding resistance aux	8,9Ω (at 25°C)		
Max. winding temp.	125°C / 257°F		
Max. discharge temp.	140°C / 284°F		



General - Configurations with SCE25LNIX

	Conf. 1
Motor configuration	CSCR
Power supply (nominal)	220-240V/60Hz
Number of phases	1
Voltage range	195-254V
Approvals	UL, KC, CB
Starting torque	HST
Note	Starter kit(relay), cover and cord relief are included and pre-assembled.

Applications with SCE25LNIX

	Conf. 1
Refrigerant	R290
Application	LBP
System cooling	fan 3m/s
Hot gas defrost	OK
Long interval pull down	OK

Electrical data - Configurations with SCE25LNIX

	Conf. 1
Starting device type	relay
Run capacitor	15μF
Start capacitor	80μF
LRA (locked rotor amps / 4s/ U(N))	30,2A
RLA (rated load amps / 1s/ U(N))	3,5A
Cut in current (U(N))	

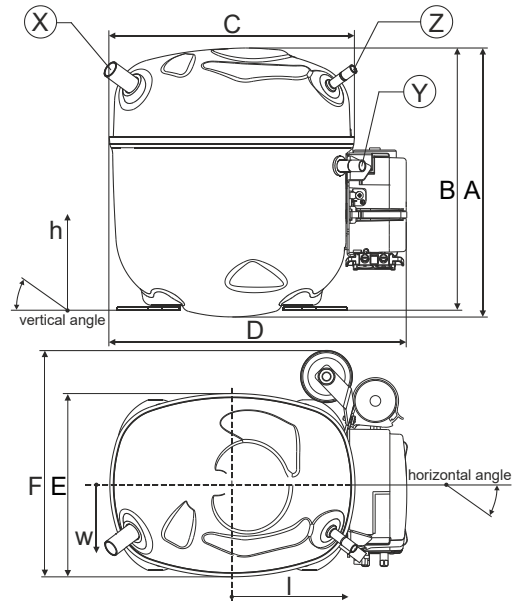
Model

Designation	SCE25LNIX	220-240V/60Hz 1~	Sales code:	104H8440
-------------	------------------	-------------------------	-------------	-----------------

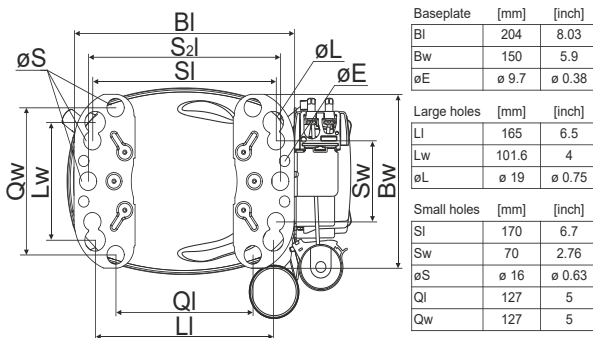
Compressor dimensions

Housing	A Height	236,4mm / 9,31in
	B Height	230,6mm / 9,08in
	C Length shell	217mm / 8,54in
	D Length w. cover	263,4mm / 10,37in
	E Width	161,1mm / 6,34in
	F Width with equipment	199mm / 7,83in

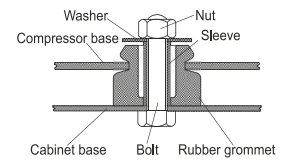
	Suction		Discharge		Process	
	X		Y		Z	
Diameter [mm]	øi 12,81-12,99		øi 8,11-8,29		øi 6,41-6,59	
(i:inside, o:outside) [in]	øi 0,5-0,51		øi 0,32-0,33		øi 0,25-0,26	
Material	copper		copper		copper	
Horizontal angle ±2°	37°		37°		37°	
Vertical angle ±2°	36°		0°		36°	
Position l/h/w [mm]	-111/212/57		116/127/81		110/94/72	
[in]	-4,4/8,3/2,2		4,5/5/3,2		4,3/3,7/2,8	
Straight tube l. [mm]	12		12		12	
[in]	0,5		0,5		0,5	



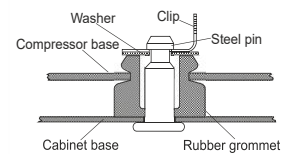
Compressor fixation



Bolt joint



Snap-on



Mounting accessories	one comp.	multi pack
Bolt joint M6 ø16mm	118-1917	118-1918
Bolt joint ø1/4" ø16mm	118-1946	
Bolt joint ø1/4" ø19mm	118-1949	
Snap-on ø7,3 ø16mm	118-1947	118-1919

Application notes

Provision for PE Grounding is located at the PE Stamp on the compressor

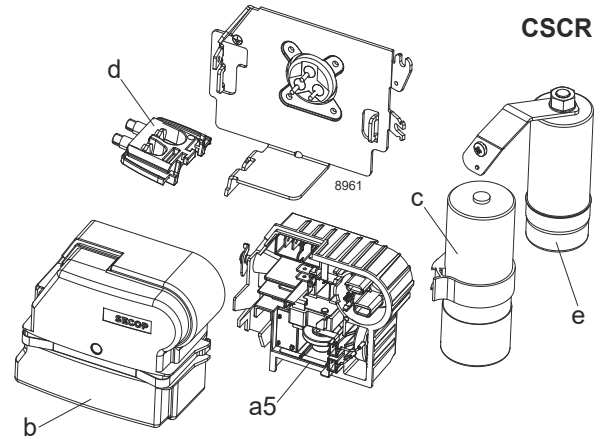
Model

Designation	SCE25LNIX	220-240V/60Hz	Conf. 1	Sales code:	104H8440
-------------	------------------	----------------------	---------	-------------	-----------------

Configuration

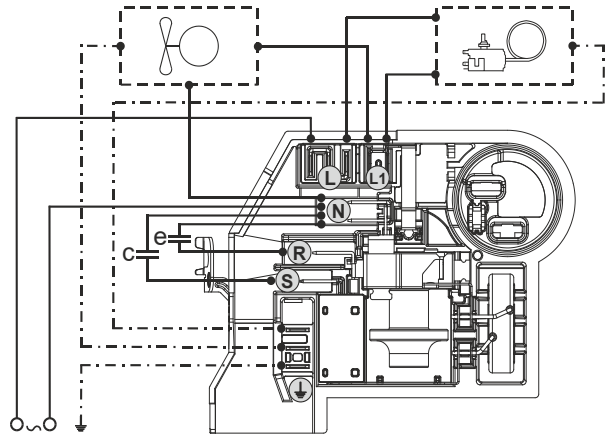
Motor configuration	CSCR
Power supply (nominal)	220-240V/60Hz 1~
Refrigerant	R290
Application	LBP
Voltage range	195-254V
Starting torque	HST
Approvals	UL
	KC
	CB

Electrical accessories / wiring diagram

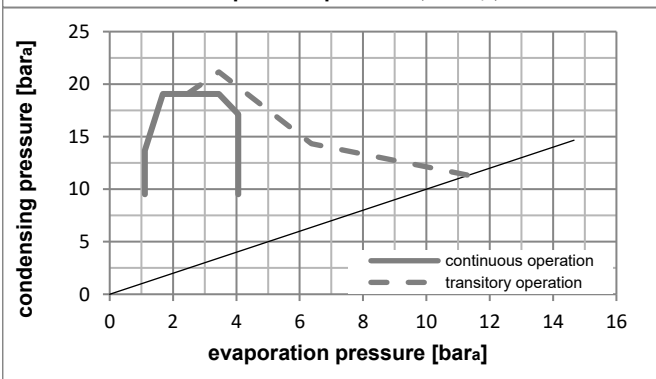
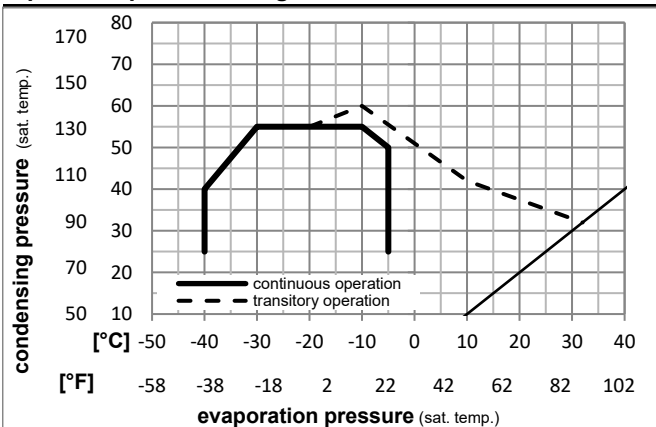


Ambient/ machine room temperatures minimum /maximum

Ambient temperature range:	10 - 43°C / 50 - 110°F
Machine room temperature range:	10 - 48°C / 50 - 119°F
Compressor cooling:	fan 3m/s



Operation pressure range



Components (Starter kit (a5)+cover (b) +cord relief (d): pre assembled)

a5	SC starter kit	117U8102
b	cover terminal board + clamp	117U1036
c	start capacitor (80µF)	117U5352
e	run capacitor (15µF, 6.3mm)	117-7167
e1	retaining clamp	117-0313
	screw M4x8mm	117-0301
d	cord relief	103N1007

Model

Designation **SCE25LNIX** **220-240V/60Hz** Conf. 1 Sales code: **104H8440**

Optimization + standard conditions

R290, 230V/60Hz, CSCR, fan 3m/s, UL, KC, CB

		Evaporating pressure (saturation temperature)				Cooling capacity			COP			EER			Power consumption			ASHRAE LBP
		Condensing pressure (saturation temperature)										Current consumption			Ref. mass flow			
		Return gas temp.										I				m		
		Liquid temp.										P1					[kg/h]	
		pe	pc	RGT	Tliq	[W]	[Btu/h]	[kcal/h]	[W/W]	[Btu/Wh]	[kcal/Wh]	[W]	[A]					
[°C]	[°F]																	
-23	54	32	32	1329,3	4540	1144,0	1,57	5,36	1,35	846,8	3,88	13,46						
-10	130	90	90															
-25	55	32	55	987,6	3373	849,9	1,22	4,18	1,05	807,6	3,70	12,30						
-13	131	90	131															
-35	40	20	40	771,1	2634	663,6	1,29	4,39	1,11	599,7	2,75	8,81						
-31	104	68	104															
-23	49	4,4	49	1113,4	3802	958,2	1,35	4,60	1,16	826,7	3,78	15,41						
-10	120	40	120															
-23	41	32	32	1513,2	5168	1302,2	1,95	6,66	1,68	776,4	3,55	15,32						
-10	105	90	90															
-35	45	32	45	718,0	2452	617,9	1,18	4,03	1,01	609,1	2,79	8,05			opt			
-31	113	90	113															

Performance tables

R290, 230V/60Hz, CSCR, fan 3m/s, UL, KC, CB

	pe		Cooling capacity			COP			EER			P1	I	m
	[°C]	[°F]	[W]	[Btu/h]	[kcal/h]	[W/W]	[Btu/Wh]	[kcal/Wh]	[W]	[A]	[kg/h]			
[°C / °F]	-40	-40	513,1	1752	441,5	0,96	3,29	0,83	533,3	2,45	5,74			
cond. pressure	-35	-31	718,0	2452	617,9	1,18	4,03	1,01	609,1	2,79	8,05			
pc= 45/113	-30	-22	953,5	3256	820,6	1,38	4,71	1,19	691,3	3,16	10,72			
return gas temp.	-25	-13	1221,9	4173	1051,6	1,57	5,37	1,35	776,8	3,55	13,78			
RGT= 32/90	-20	-4	1525,3	5209	1312,7	1,77	6,04	1,52	862,5	3,95	17,27			
liquid temp	-15	5	1866,2	6373	1606,1	1,97	6,74	1,70	945,4	4,33	21,23			
Tliq= 45/113	-5	23	2669,1	9116	2297,1	2,45	8,36	2,11	1090,4	5,00	30,73			
[°C / °F]	-40	-40	389,0	1329	334,8	0,80	2,75	0,69	483,8	2,23	4,80			
cond. pressure	-35	-31	555,9	1898	478,4	0,96	3,26	0,82	581,5	2,66	6,87			
pc= 55/131	-30	-22	754,7	2577	649,5	1,09	3,73	0,94	690,5	3,16	9,36			
return gas temp	-25	-13	987,6	3373	849,9	1,22	4,18	1,05	807,6	3,70	12,30			
RGT= 32/90	-20	-4	1256,9	4292	1081,7	1,35	4,62	1,16	929,9	4,26	15,72			
liquid temp	-15	5	1564,9	5344	1346,7	1,48	5,07	1,28	1054,2	4,84	19,67			
Tliq= 55/131	-5	23	2305,9	7875	1984,5	1,78	6,07	1,53	1296,6	5,97	29,38			