

## Model

Designation	<b>SCE25MNIX</b>	220-240V/60Hz 1~	Sales code:	<b>104H8450</b>
-------------	------------------	------------------	-------------	-----------------

## Compressor design

Oil type	Polyolester	Refrigerant(s)	<b>R290</b>
Oil viscosity	32cSt	Displacement	25cm <sup>3</sup> / 1,53cu.in
Oil quantity	500cm <sup>3</sup> / 16,9fl.oz	Compressors on pallet	48
Refr. charge - tech. limit	500g / 17,6oz		
Free gas volume comp.	3150cm <sup>3</sup> / 106,5fl.oz		
Weight	14,9kg / 32,8lbs		
Motor protection	1# internal		
Winding resistance main	2,2Ω (at 25°C)		
Winding resistance aux	5,3Ω (at 25°C)		
Max. winding temp.	125°C / 257°F		
Max. discharge temp.	140°C / 284°F		



## General - Configurations with SCE25MNIX

	<b>Conf. 1</b>
Motor configuration	CSCR
Power supply (nominal)	220-240V/60Hz
Number of phases	1
Voltage range	195-254V
Approvals	UL, KC
Starting torque	HST
Note	Starter kit(relay), cover and cord relief are included and pre-assembled.

## Applications with SCE25MNIX

	<b>Conf. 1</b>
Refrigerant	R290
Application	MBP
System cooling	fan 3m/s
Hot gas defrost	OK
Long interval pull down	OK

## Electrical data - Configurations with SCE25MNIX

	<b>Conf. 1</b>
Starting device type	relay
Run capacitor	15μF
Start capacitor	80μF
LRA (locked rotor amps / 4s/ U(N))	32A
RLA (rated load amps / 1s/ U(N))	3,9A
Cut in current (U(N))	

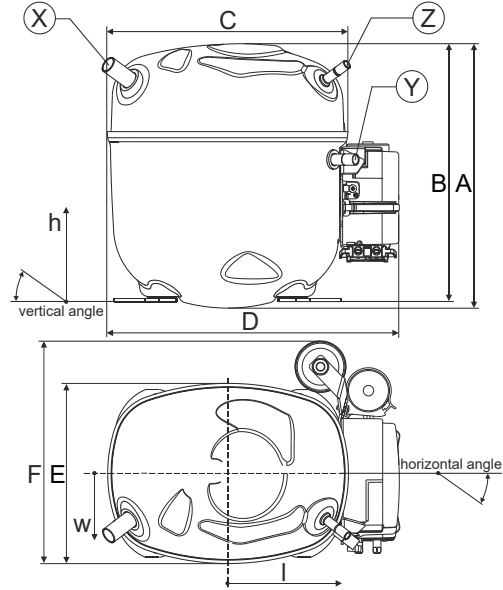
## Model

Designation	<b>SCE25MNIX</b>	220-240V/60Hz 1~	Sales code:	<b>104H8450</b>
-------------	------------------	------------------	-------------	-----------------

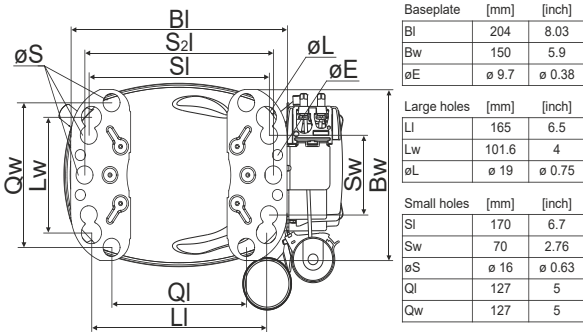
## Compressor dimensions

<b>Housing</b>	A Height	236,4mm / 9,31in
	B Height	230,6mm / 9,08in
	C Length shell	217mm / 8,54in
	D Length w. cover	263,4mm / 10,37in
	E Width	161,1mm / 6,34in
	F Width with equipment	199mm / 7,83in

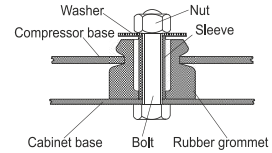
<b>Connectors</b>		<b>Suction</b>	<b>Discharge</b>	<b>Process</b>
		<b>X</b>	<b>Y</b>	<b>Z</b>
Diameter	[mm]	øi 12,81-12,99	øi 8,11-8,29	øi 6,41-6,59
(i:inside, o:outside)	[in]	øi 0,5-0,51	øi 0,32-0,33	øi 0,25-0,26
Material		copper	copper	copper
Horizontal angle	±2°	37°	37°	37°
Vertical angle	±2°	36°	0°	36°
Position l/h/w	[mm]	-111/212/57	116/127/81	110/94/72
	[in]	-4,4/8,3/2,2	4,5/5/3,2	4,3/3,7/2,8
Straight tube l.	[mm]	12	12	12
	[in]	0,5	0,5	0,5



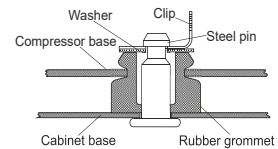
## Compressor fixation



### Bolt joint



### Snap-on



Mounting accessories	one comp.	multi pack
Bolt joint   M6   ø16mm	118-1917	118-1918
Bolt joint   ø1/4"   ø16mm	118-1946	
Bolt joint   ø1/4"   ø19mm	118-1949	
Snap-on   ø7,3   ø16mm	118-1947	118-1919

## Application notes

Provision for PE Grounding is located at the PE Stamp on the compressor

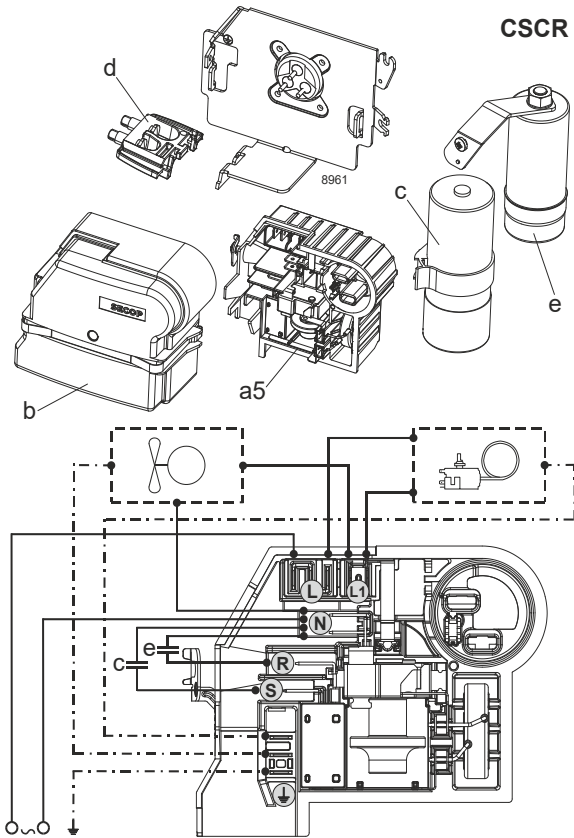
## Model

Designation **SCE25MNIX** **220-240V/60Hz** Conf. 1 Sales code: **104H8450**

## Configuration

Motor configuration CSCR  
 Power supply (nominal) 220-240V/60Hz 1~  
 Refrigerant R290  
 Application MBP  
 Voltage range 195-254V  
 Starting torque HST  
 Approvals UL  
 KC

## Electrical accessories / wiring diagram



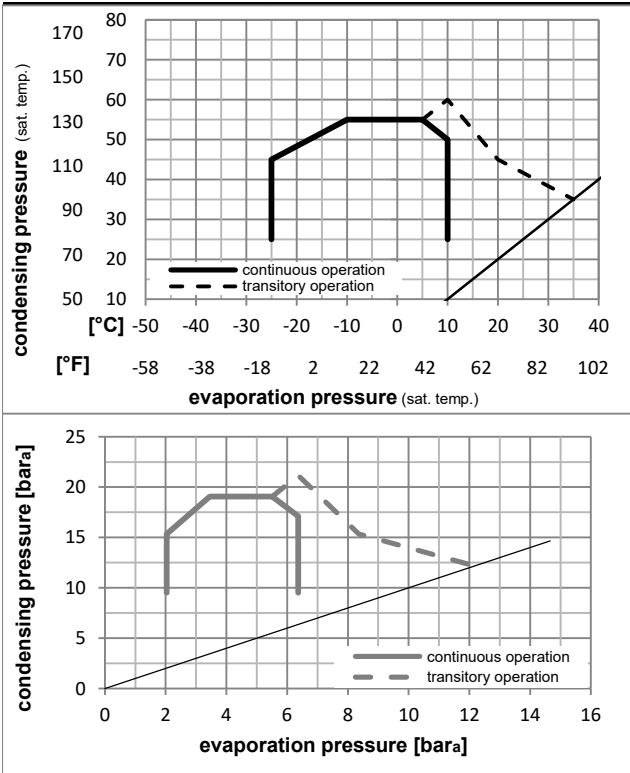
## Ambient/ machine room temperatures minimum /maximum

Ambient temperature range: 10 - 43°C / 50 - 110°F

Machine room temperature range: 10 - 48°C / 50 - 119°F

Compressor cooling: fan 3m/s

## Operation pressure range



### Components (Starter kit (a5)+cover (b) +cord relief (d): pre assembled)

a5	SC starter kit	117U8102
b	cover terminal board + clamp	117U1036
c	start capacitor (80µF)	117U5352
e	run capacitor (15µF, 6.3mm)	117-7167
e1	retaining clamp	117-0313
	screw M4x8mm	117-0301
d	cord relief	103N1007

### Model

Designation **SCE25MNIX** **220-240V/60Hz** Conf. 1 Sales code: **104H8450**

### Optimization + standard conditions

R290, 230V/60Hz, CSCR, fan 3m/s, UL, KC

		Evaporating pressure (saturation temperature)				Cooling capacity			COP	EER	Power consumption				
		Condensing pressure (saturation temperature)									Current consumption		Ref. mass flow		
		Return gas temp.									I	m			
		Liquid temp.													
		pe	pc	RGT	Tliq	[W]	[Btu/h]	[kcal/h]	[W/W]	[Btu/Wh]	[kcal/Wh]	P1	I	m	
[°C]	[°F]	[°C]	[°F]	[°C]	[°F]	[W]	[Btu/h]	[kcal/h]	[W/W]	[Btu/Wh]	[kcal/Wh]	[W]	[A]	[kg/h]	
-7	20	54	130	35	95	2442,9	8343	2102,3	2,05	7,00	1,76	1192,5	5,62	27,87	ASHRAE MBP
-10	14	55	131	32	90	1920,4	6558	1652,7	1,70	5,81	1,46	1129,6	5,33	24,29	cecomaf MBP
-10	14	45	113	20	68	2242,9	7660	1930,2	2,16	7,38	1,86	1037,5	4,91	27,54	EN12900 MBP
-7	20	49	120	18	65	2352,9	8035	2024,9	2,10	7,18	1,81	1119,7	5,28	30,55	ARI540 MBP
-10	14	45	113	32	90	2334,9	7974	2009,5	2,25	7,69	1,94	1037,5	4,91	26,71	opt
-25	-13	45	113	32	90	1152,2	3935	991,6	1,47	5,02	1,26	784,1	3,78	12,99	opt

### Performance tables

R290, 230V/60Hz, CSCR, fan 3m/s, UL, KC

	pe		Cooling capacity			COP	EER	P1	I	m	
	[°C]	[°F]	[W]	[Btu/h]	[kcal/h]	[W/W]	[Btu/Wh]	[kcal/Wh]	[W]	[A]	[kg/h]
[°C / °F]	-25	-13	1152,2	3935	991,6	1,47	5,02	1,26	784,1	3,78	12,99
cond. pressure	-20	-4	1488,2	5082	1280,7	1,73	5,92	1,49	858,5	4,11	16,85
pc= 45/113	-15	5	1893,0	6465	1629,1	2,00	6,84	1,72	945,6	4,50	21,54
return gas temp.	-10	14	2334,9	7974	2009,5	2,25	7,69	1,94	1037,5	4,91	26,71
RGT= 32/90	0	32	3203,9	10942	2757,3	2,66	9,09	2,29	1204,0	5,67	37,16
liquid temp	5	41	3567,7	12184	3070,4	2,83	9,65	2,43	1262,8	5,94	41,74
Tliq= 45/113	10	50	3842,1	13122	3306,6	2,97	10,13	2,55	1294,8	6,09	45,40
[°C / °F]	-25	-13	973,3	3324	837,7	1,17	4,01	1,01	829,0	3,97	12,12
cond. pressure	-20	-4	1207,0	4122	1038,8	1,32	4,50	1,13	916,0	4,36	15,10
pc= 55/131	-15	5	1533,2	5236	1319,5	1,50	5,14	1,30	1018,8	4,82	19,28
return gas temp	-10	14	1920,4	6558	1652,7	1,70	5,81	1,46	1129,6	5,33	24,29
RGT= 32/90	0	32	2751,0	9395	2367,6	2,05	6,99	1,76	1343,7	6,32	35,33
liquid temp	5	41	3131,3	10694	2694,8	2,19	7,47	1,88	1431,1	6,73	40,60
Tliq= 55/131	10	50	3446,0	11769	2965,6	2,31	7,87	1,98	1494,9	7,03	45,18