

Model

Designation	SCE25MNIX	220-240V/60Hz 1~	Sales code:	104H8450
-------------	------------------	------------------	-------------	-----------------

Compressor design

Oil type	Polyolester	Refrigerant(s)	R290
Oil viscosity	32cSt	Displacement	25cm ³ / 1,53cu.in
Oil quantity	500cm ³ / 16,9fl.oz	Compressors on pallet	48
Refr. charge - tech. limit	500g / 17,6oz		
Free gas volume comp.	3150cm ³ / 106,5fl.oz		
Weight	14,9kg / 32,8lbs		
Motor protection	1# internal		
Winding resistance main	2,2Ω (at 25°C)		
Winding resistance aux	5,3Ω (at 25°C)		
Max. winding temp.	125°C / 257°F		
Max. discharge temp.	140°C / 284°F		



General - Configurations with SCE25MNIX

	Conf. 1
Motor configuration	CSCR
Power supply (nominal)	220-240V/60Hz
Number of phases	1
Voltage range	195-254V
Approvals	UL, KC, CB
Starting torque	HST
Note	Starter kit(relay), cover and cord relief are included and pre-assembled.

Applications with SCE25MNIX

	Conf. 1
Refrigerant	R290
Application	MBP
System cooling	fan 3m/s
Hot gas defrost	OK
Long interval pull down	OK

Electrical data - Configurations with SCE25MNIX

	Conf. 1
Starting device type	relay
Run capacitor	15μF
Start capacitor	80μF
LRA (locked rotor amps / 4s/ U(N))	32A
RLA (rated load amps / 1s/ U(N))	3,9A
Cut in current (U(N))	

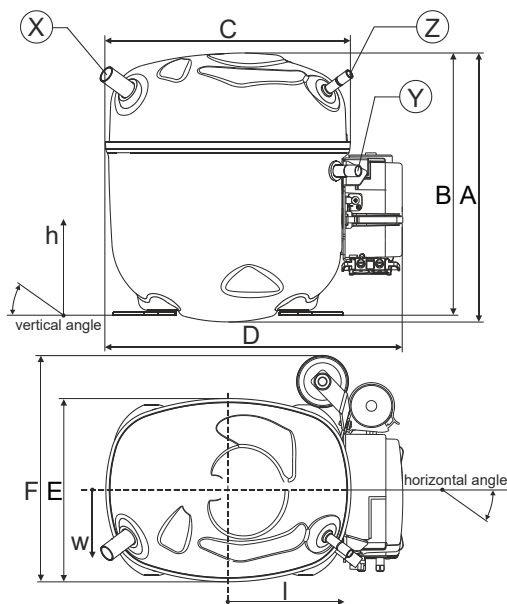
Model

Designation	SCE25MNIX	220-240V/60Hz 1~	Sales code:	104H8450
-------------	------------------	-------------------------	-------------	-----------------

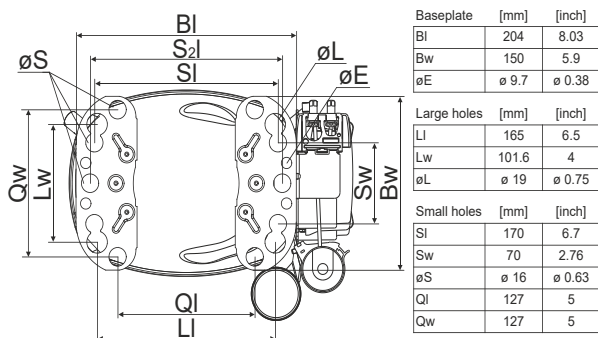
Compressor dimensions

Housing	A Height	236,4mm / 9,31in
	B Height	230,6mm / 9,08in
	C Length shell	217mm / 8,54in
	D Length w. cover	263,4mm / 10,37in
	E Width	161,1mm / 6,34in
	F Width with equipment	199mm / 7,83in

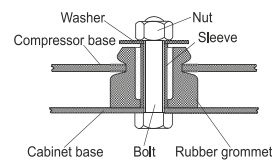
	Suction		Discharge		Process		
	X		Y		Z		
Diameter [mm]	øi 12,81-12,99		øi 8,11-8,29		øi 6,41-6,59		
(i:inside, o:outside) [in]	øi 0,5-0,51		øi 0,32-0,33		øi 0,25-0,26		
Material	copper		copper		copper		
Horizontal angle ±2°	37°		37°		37°		
Vertical angle ±2°	36°		0°		36°		
Position l/h/w [mm]	-111/212/57		116/127/81		110/94/72		
[in]	-4,4/8,3/2,2		4,5/5/3,2		4,3/3,7/2,8		
Straight tube l.	[mm]	12		12		12	
	[in]	0,5		0,5		0,5	



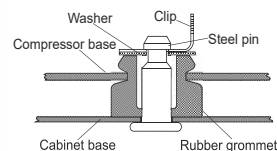
Compressor fixation



Bolt joint



Snap-on



Mounting accessories	one comp.	multi pack
Bolt joint M6 ø16mm	118-1917	118-1918
Bolt joint ø1/4" ø16mm	118-1946	
Bolt joint ø1/4" ø19mm	118-1949	
Snap-on ø7,3 ø16mm	118-1947	118-1919

Application notes

Provision for PE Grounding is located at the PE Stamp on the compressor

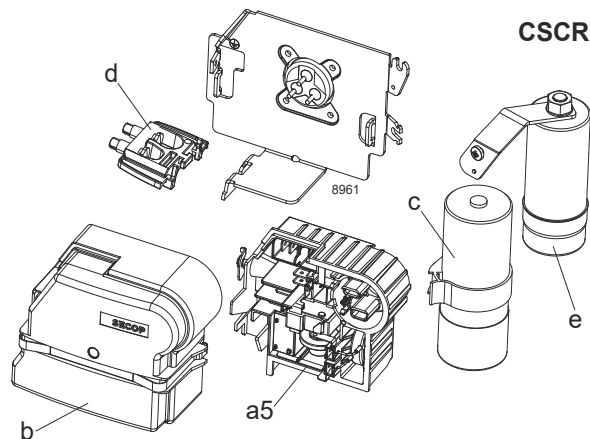
Model

Designation	SCE25MNIX	220-240V/60Hz	Conf. 1	Sales code:	104H8450
-------------	------------------	----------------------	---------	-------------	-----------------

Configuration

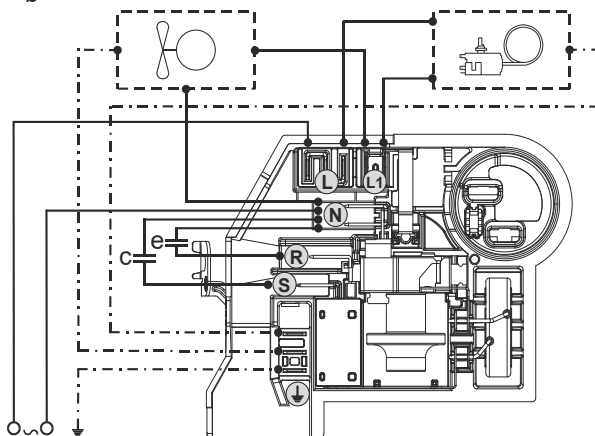
Motor configuration	CSCR
Power supply (nominal)	220-240V/60Hz 1~
Refrigerant	R290
Application	MBP
Voltage range	195-254V
Starting torque	HST
Approvals	UL
	KC
	CB

Electrical accessories / wiring diagram

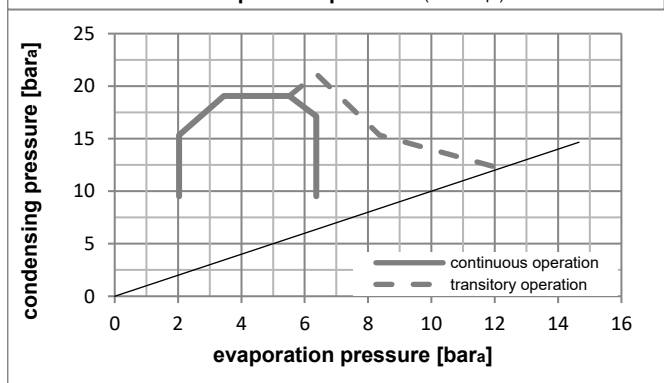
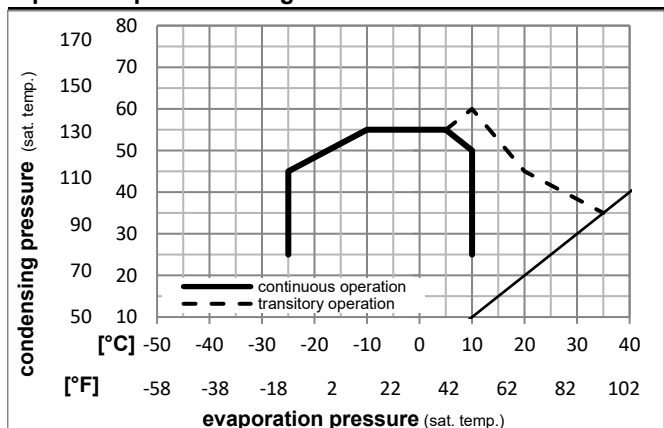


Ambient/ machine room temperatures minimum /maximum

Ambient temperature range:	10 - 43°C / 50 - 110°F
Machine room temperature range:	10 - 48°C / 50 - 119°F
Compressor cooling:	fan 3m/s



Operation pressure range



Components (Starter kit (a5)+cover (b) +cord relief (d): pre assembled)

a5	SC starter kit	117U8102
b	cover terminal board + clamp	117U1036
c	start capacitor (80µF)	117U5352
e	run capacitor (15µF, 6.3mm)	117-7167
e1	retaining clamp	117-0313
	screw M4x8mm	117-0301
d	cord relief	103N1007

Model

Designation **SCE25MNIX** **220-240V/60Hz** Conf. 1 Sales code: **104H8450**

Optimization + standard conditions

R290, 230V/60Hz, CSCR, fan 3m/s, UL, KC, CB

Evaporating pressure (saturation temperature)					Condensing pressure (saturation temperature)			Return gas temp.		Liquid temp.		Cooling capacity			COP	EER	Power consumption			Ref. mass flow m [kg/h]	
pe	pc	RGT	Tliq	[W]	[Btu/h]	[kcal/h]	[W/W]	[Btu/Wh]	[kcal/Wh]	[W]	[A]	Current consumption									
[°C]	[°F]	[°C]	[°F]	[W]	[Btu/h]	[kcal/h]	[W/W]	[Btu/Wh]	[kcal/Wh]	[W]	[A]	[W]	[A]	[kg/h]							
-7	20	54	130	35	95	46	115	2449,6	8366	2108,2	2,05	7,01	1,77	1193,0	5,62	27,94	ASHRAE MBP				
-10	14	55	131	32	90	55	131	1920,4	6558	1652,7	1,70	5,81	1,46	1129,6	5,33	24,29	cecomaf MBP				
-10	14	45	113	20	68	45	113	2242,9	7660	1930,2	2,16	7,38	1,86	1037,5	4,91	27,54	EN12900 MBP				
-7	20	49	120	18	65	49	120	2361,1	8064	2032,0	2,11	7,20	1,81	1120,2	5,29	30,64	ARI540 MBP				
-10	14	45	113	32	90	45	113	2334,9	7974	2009,5	2,25	7,69	1,94	1037,5	4,91	26,71	opt				
-25	-13	45	113	32	90	45	113	1152,2	3935	991,6	1,47	5,02	1,26	784,1	3,78	12,99	opt				

Performance tables

R290, 230V/60Hz, CSCR, fan 3m/s, UL, KC, CB

	pe		Cooling capacity			COP	EER		P1	I	m
	[°C]	[°F]	[W]	[Btu/h]	[kcal/h]	[W/W]	[Btu/Wh]	[kcal/Wh]	[W]	[A]	[kg/h]
[°C / °F]	-25	-13	1152,2	3935	991,6	1,47	5,02	1,26	784,1	3,78	12,99
cond. pressure	-20	-4	1488,2	5082	1280,7	1,73	5,92	1,49	858,5	4,11	16,85
pc= 45/113	-15	5	1893,0	6465	1629,1	2,00	6,84	1,72	945,6	4,50	21,54
return gas temp.	-10	14	2334,9	7974	2009,5	2,25	7,69	1,94	1037,5	4,91	26,71
RGT= 32/90	0	32	3203,9	10942	2757,3	2,66	9,09	2,29	1204,0	5,67	37,16
liquid temp	5	41	3567,7	12184	3070,4	2,83	9,65	2,43	1262,8	5,94	41,74
Tliq= 45/113	10	50	3842,1	13122	3306,6	2,97	10,13	2,55	1294,8	6,09	45,40
[°C / °F]	-25	-13	973,3	3324	837,7	1,17	4,01	1,01	829,0	3,97	12,12
cond. pressure	-20	-4	1207,0	4122	1038,8	1,32	4,50	1,13	916,0	4,36	15,10
pc= 55/131	-15	5	1533,2	5236	1319,5	1,50	5,14	1,30	1018,8	4,82	19,28
return gas temp	-10	14	1920,4	6558	1652,7	1,70	5,81	1,46	1129,6	5,33	24,29
RGT= 32/90	0	32	2751,0	9395	2367,6	2,05	6,99	1,76	1343,7	6,32	35,33
liquid temp	5	41	3131,3	10694	2694,8	2,19	7,47	1,88	1431,1	6,73	40,60
Tliq= 55/131	10	50	3446,0	11769	2965,6	2,31	7,87	1,98	1494,9	7,03	45,18