

Model

Designation **CU KLF4.0CND R290 230/1/50 CAP**



Sales code: 314H6008
Engineering code: CUKLF40CND0CE

Application Data

Power supply 220-240V / 50Hz 0~
Refrigerants R290
Refr. charge - tech. limit 200g / 7,1oz
Starter HST / capillary tube or expansion valve
Sound pressure (10m)

Generic data

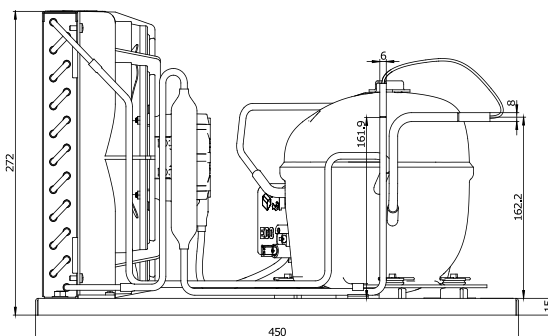
Voltage range 198 - 254V / 50Hz
Refrigerant R290
Application LBP+MBP

Rated performance pe=-10°C, Tsuc=20°C, Tamb=25°C, subccoling: 0K
Cooling capacity 335W / 1144Btu/h
Power consumption 159,1W
Current consumption 1,2A
COP/EER 2,11 / 7,19Btu/Wh

Approvals Eco design (EU) 2015/1095,
VDE, CCC

Compressor

Designation **KLF4.0CND**
Motor configuration CSIR
Locked rotor amperage 10,2A
Rated load amperage A
Winding resistance main 13,1Ω
Winding resistance aux 25,3Ω
Oil quantity 170cm³ / 5,7fl.oz
Oil type POE
Horsepower rating 1/6 HP



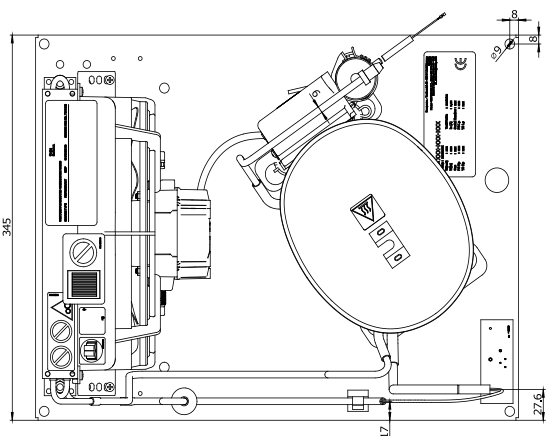
Dimensions

Condensing unit

Height x Width x Depth 272 x 350 x 450 [mm] / 10,7 x 13,8 x 17,7 [in]
Weight 15,2kg / 33,5lbs
Suction adapter OD ø8mm / 1/3in
Discharge adapter OD ø6mm / 1/4in
Process connector ø6,2mm / 0,24in

Package data

Height x Width x Depth 350 x 450 x 550 [mm] / 13,8 x 17,7 x 21,7 [in]
Weight 18,2kg / 40,1lbs



Model

Designation **CU KLF4.0CND R290 230/1/50 CAP**

Sales code: 314H6008

Engineering code: CUKLF40CND0CE

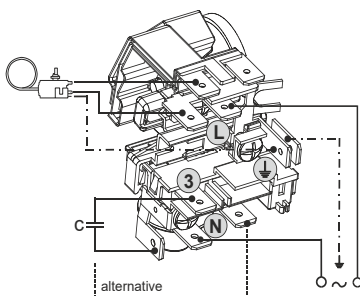
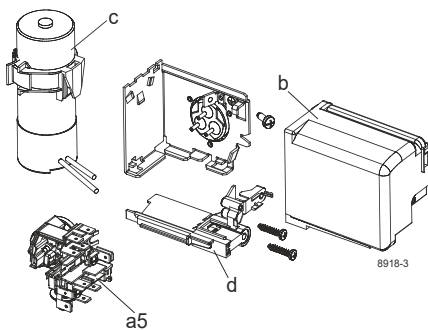
Components Condensing-Unit / Spare Parts

| Component | Type | Spare part code number |
|--------------------|-------------------------------|------------------------|
| Compressor code | KLF4.0CND | 106H2401 |
| Condenser | Condenser (2 rows x 10 tubes) | 314S0008 |
| Fan motor | 30W | 314S0016 |
| Blade code | ø230mm 28° | 314S0025 |
| Air flow | 463m³/h | |
| Receiver code | not installed | -/- |
| Suction valve code | OD ø8mm / 1/3in | -/- |
| Liquid valve code | OD ø6mm / 1/4in | -/- |

| Compressor starting equipment | Spare part code number |
|--|------------------------|
| pos. a5 - current relay TY (T1189/L6-S3) | 117U7073 |
| pos. c - start capacitor (80µF, 6.3mm) | 117U5001 |
| pos. b, d - cover + clamp + screws(5VA) in bag | 103N1060 |

Wiring Sketch Compressor

CSIR



Model

Designation **CU KLF4.0CND R290 230/1/50 CAP**

Sales code: 314H6008

Engineering code: CUKLF40CND0CE

Cooling performance - Conf. 1

Power supply 220-240V / 50Hz 0~ Voltage range 198 - 254V / 50Hz

Refr. charge - tech. limit 200g / 7,1oz

Starter HST / capillary tube or expansion valve

Motor configuration CSIR

Refrigerant R290

Application LBP+MBP

Approvals Eco design (EU) 2015/1095, VDE, CCC

| ambient temperature | °C / °F | 25 / 77 | | | | | | | (suction gas temperature [°C / °F]: 20 / 68, subcooling: 0K) |
|-------------------------|-----------|-----------|-----------|-----------|----------|----------|--------|---------|--|
| evaporating temperature | [°C / °F] | -40 / -40 | -35 / -31 | -25 / -13 | -20 / -4 | -10 / 14 | 0 / 32 | 10 / 50 | |
| cooling capacity | [W] | 84 | 113 | 185 | 229 | 335 | 465 | 618 | |
| COP | [W/W] | 0,76 | 0,95 | 1,37 | 1,6 | 2,11 | 2,66 | 3,2 | |
| cooling capacity | [Btu/h] | 287 | 386 | 632 | 783 | 1144 | 1588 | 2110 | |
| power consumption | [W] | 111 | 119 | 135 | 143 | 159 | 175 | 193 | |
| current consumption | [A] | 1,1 | 1,1 | 1,1 | 1,1 | 1,2 | 1,2 | 1,3 | |

| ambient temperature | °C / °F | 32 / 90 | | | | | | | (suction gas temperature [°C / °F]: 20 / 68, subcooling: 0K) |
|-------------------------|-----------|-----------|-----------|-----------|----------|----------|--------|---------|--|
| evaporating temperature | [°C / °F] | -40 / -40 | -35 / -31 | -25 / -13 | -20 / -4 | -10 / 14 | 0 / 32 | 10 / 50 | |
| cooling capacity | [W] | 77 | 105 | 172 | 213 | 309 | 428 | 567 | |
| COP | [W/W] | 0,71 | 0,91 | 1,27 | 1,47 | 1,86 | 2,28 | 2,7 | |
| cooling capacity | [Btu/h] | 265 | 359 | 589 | 727 | 1057 | 1460 | 1935 | |
| power consumption | [W] | 108 | 116 | 135 | 145 | 166 | 188 | 210 | |
| current consumption | [A] | 1 | 1,1 | 1,1 | 1,1 | 1,2 | 1,2 | 1,3 | |

| ambient temperature | °C / °F | 38 / 100 | | | | | | | (suction gas temperature [°C / °F]: 20 / 68, subcooling: 0K) |
|-------------------------|-----------|-----------|-----------|-----------|----------|----------|--------|---------|--|
| evaporating temperature | [°C / °F] | -40 / -40 | -35 / -31 | -25 / -13 | -20 / -4 | -10 / 14 | 0 / 32 | 10 / 50 | |
| cooling capacity | [W] | 70 | 96 | 159 | 197 | 285 | 393 | 520 | |
| COP | [W/W] | 0,63 | 0,8 | 1,14 | 1,3 | 1,63 | 1,97 | 2,31 | |
| cooling capacity | [Btu/h] | 239 | 329 | 544 | 672 | 975 | 1344 | 1777 | |
| power consumption | [W] | 111 | 120 | 140 | 151 | 175 | 199 | 225 | |
| current consumption | [A] | 1,1 | 1,1 | 1,1 | 1,1 | 1,2 | 1,3 | 1,4 | |

| ambient temperature | °C / °F | 43 / 109 | | | | | | | (suction gas temperature [°C / °F]: 20 / 68, subcooling: 0K) |
|-------------------------|-----------|-----------|-----------|-----------|----------|----------|--|--|--|
| evaporating temperature | [°C / °F] | -40 / -40 | -35 / -31 | -25 / -13 | -20 / -4 | -10 / 14 | | | |
| cooling capacity | [W] | 62 | 88 | 147 | 182 | 264 | | | |
| COP | [W/W] | 0,53 | 0,7 | 1,01 | 1,16 | 1,45 | | | |
| cooling capacity | [Btu/h] | 213 | 299 | 502 | 620 | 900 | | | |
| power consumption | [W] | 116 | 125 | 146 | 157 | 182 | | | |
| current consumption | [A] | 1,1 | 1,1 | 1,1 | 1,2 | 1,2 | | | |