

Model

Designation

CU KLF4.8CND R290 230/1/50 CAP



Sales code:

314H6001

Engineering code:

CUKLF48CND0CE

Application Data

Power supply	220-240V / 50Hz 1~
Refrigerants	R290
Refr. charge - tech. limit	200g / 7,1oz
Starter	HST / capillary tube or expansion valve
Sound pressure (10m)	

Generic data

Voltage range	198 - 254V / 50Hz
Refrigerant	R290
Application	LBP+MBP
Rated performance	<u>pe=-10°C, Tsuc=20°C, Tamb=25°C, subcooling: 0K</u>
Cooling capacity	405W / 1384Btu/h
Power consumption	193W
Current consumption	1,2A
COP/EER	2,1 / 7,17Btu/Wh
Approvals	Eco design (EU) 2015/1095, CE, UK CA, VDE

Compressor

Designation	KLF4.8CND
Motor configuration	CSIR
Locked rotor amperage	10,2A
Rated load amperage	A
Winding resistance main	13,1Ω
Winding resistance aux	25,3Ω
Oil quantity	152cm ³ / 5,1fl.oz
Oil type	POE
Horsepower rating	1/5 HP

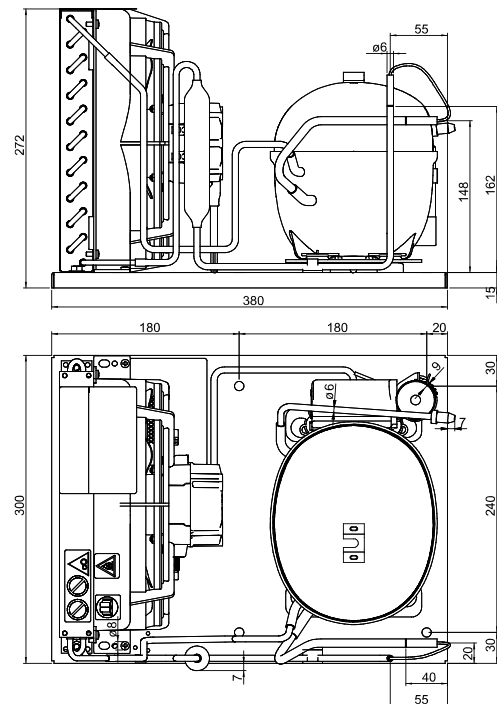
Dimensions

Condensing unit

Height x Width x Depth	272 x 300 x 380 [mm] / 10,7 x 11,8 x 15 [in]
Weight	14,2kg / 31,3lbs
Suction adapter	OD ø8mm / 1/3in
Discharge adapter	OD ø6mm / 1/4in
Process connector	ø6,2mm / 0,24in

Package data

Height x Width x Depth	300 x 340 x 494 [mm] / 11,8 x 13,4 x 19,4 [in]
Weight	17,2kg / 37,9lbs



Model

Designation **CU KLF4.8CND R290 230/1/50 CAP**

Sales code: 314H6001

Engineering code: CUKLF48CND0CE

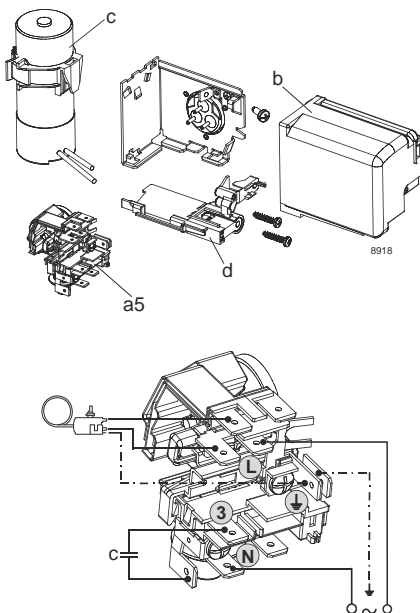
Components Condensing-Unit / Spare Parts

Component	Type	Spare part code number
Compressor code	KLF4.8CND	106H2500
Condenser	Condenser (2 rows x 10 tubes)	SP 314S0008
Fan motor	30W	MP 314S0016
Blade code	ø230mm 28°	SP 314S0025
Air flow	510,4m³/h	
Receiver code	not installed	-/-
Suction valve code	OD ø8mm / 1/3in	-/-
Liquid valve code	OD ø6mm / 1/4in	-/-

Compressor starting equipment	Spare part code number
pos. a5 - current relay TY (T1189/L6-S3)	117U7073
pos. c - start capacitor (80µF, 6.3mm)	117U5001
pos. b, d - cover + clamp + screws	103N0600

Wiring Sketch Compressor

CSIR



Model

Designation	CU KLF4.8CND R290 230/1/50 CAP	Sales code:	314H6001
		Engineering code:	CUKLF48CND0CE

Cooling performance - Conf. 1

Power supply	220-240V / 50Hz 1~	Voltage range	198 - 254V / 50Hz
Refr. charge - tech. limit	200g / 7,1oz		
Starter	HST / capillary tube or expansion valve		
Motor configuration	CSIR		
Refrigerant	R290		
Application	LBP+MBP		
Approvals	Eco design (EU) 2015/1095, CE, UK CA, VDE		

ambient temperature	[°C / °F]	25 / 77 (suction gas temperature [°C / °F]: 20 / 68, subcooling: 0K)						
evaporating temperature	[°C / °F]	-30 / -22	-25 / -13	-20 / -4	-10 / 14	0 / 32	5 / 41	10 / 50
cooling capacity	[W]	177	225	279	405	556	639	727
COP	[W/W]	1,17	1,4	1,63	2,1	2,56	2,77	2,96
cooling capacity	[Btu/h]	605	768	952	1384	1897	2182	2482
power consumption	[W]	151	161	171	193	217	231	246
current consumption	[A]	1,1	1,1	1,1	1,2	1,3	1,4	1,4

ambient temperature	[°C / °F]	32 / 90 (suction gas temperature [°C / °F]: 20 / 68, subcooling: 0K)						
evaporating temperature	[°C / °F]	-30 / -22	-25 / -13	-20 / -4	-10 / 14	0 / 32	5 / 41	10 / 50
cooling capacity	[W]	166	210	259	372	507	582	661
COP	[W/W]	1,07	1,27	1,46	1,83	2,19	2,35	2,48
cooling capacity	[Btu/h]	568	717	883	1270	1732	1988	2258
power consumption	[W]	155	166	178	203	232	248	267
current consumption	[A]	1,1	1,1	1,2	1,3	1,4	1,4	1,5

ambient temperature	[°C / °F]	38 / 100 (suction gas temperature [°C / °F]: 20 / 68, subcooling: 0K)						
evaporating temperature	[°C / °F]	-30 / -22	-25 / -13	-20 / -4	-10 / 14	0 / 32	5 / 41	10 / 50
cooling capacity	[W]	151	192	236	340	464	532	605
COP	[W/W]	0,95	1,12	1,28	1,6	1,89	2,01	2,11
cooling capacity	[Btu/h]	517	655	808	1162	1583	1817	2065
power consumption	[W]	159	171	184	212	246	265	287
current consumption	[A]	1,1	1,1	1,2	1,3	1,4	1,5	1,6

ambient temperature	[°C / °F]	43 / 109 (suction gas temperature [°C / °F]: 20 / 68, subcooling: 0K)						
evaporating temperature	[°C / °F]	-30 / -22	-25 / -13	-20 / -4	-10 / 14	0 / 32		
cooling capacity	[W]	137	175	217	313	427		
COP	[W/W]	0,85	1,01	1,15	1,42	1,65		
cooling capacity	[Btu/h]	468	598	741	1070	1460		
power consumption	[W]	161	174	188	221	259		
current consumption	[A]	1,1	1,2	1,2	1,3	1,5		