

## Model

Designation **CU KLF4.8CND R290 230/1/50 VAL**



Sales code: 314H6000  
Engineering code: CUKLF48CND0VE

## Application Data

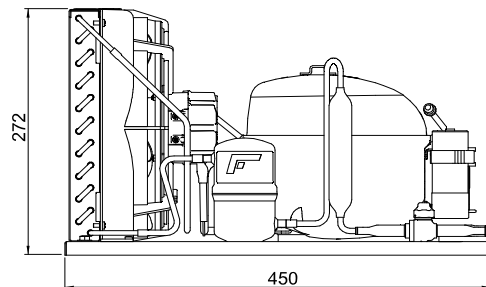
Power supply 220-240V / 50Hz 1~  
Refrigerants R290  
Refr. charge - tech. limit 200g / 7,1oz  
Starter HST / capillary tube or expansion valve  
Sound pressure (10m) 0dB(A)

## Generic data

Voltage range 198 - 254V / 50Hz  
Refrigerant R290  
Application LBP+MBP  
  
Rated performance pe=-10°C, Tsuc=20°C, Tamb=25°C, subccoling: 0K  
Cooling capacity 401W / 1371Btu/h  
Power consumption 192,2W  
Current consumption 1,3A  
COP/EER 2,09 / 7,13Btu/Wh  
  
Approvals Eco design (EU) 2015/1095,  
CE, UK CA, VDE

## Compressor

Designation **KLF4.8CND**  
Motor configuration CSIR  
Locked rotor amperage 10,2A  
Rated load amperage A  
Winding resistance main 13,1Ω  
Winding resistance aux 25,3Ω  
Oil quantity 170cm<sup>3</sup> / 5,7fl.oz  
Oil type POE  
Horsepower rating 1/5 HP



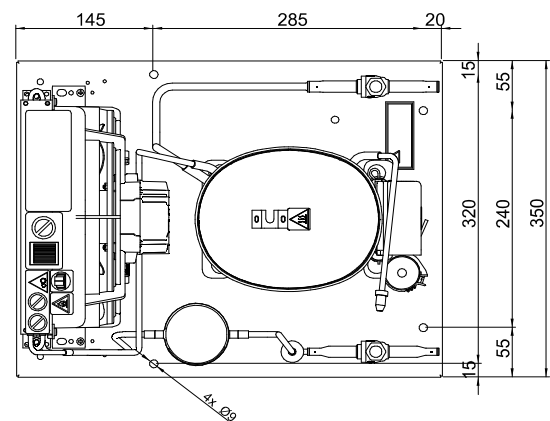
## Dimensions

### Condensing unit

Height x Width x Depth 297 x 350 x 450 [mm] / 11,7 x 13,8 x 17,7 [in]  
Weight 15,8kg / 34,8lbs  
Suction adapter OD ø8mm / 1/3in  
Discharge adapter OD ø6mm / 1/4in  
Process connector ø6,2mm / 0,24in

### Package data

Height x Width x Depth 340 x 372 x 570 [mm] / 13,4 x 14,6 x 22,4 [in]  
Weight 18,8kg / 41,4lbs



## Model

Designation **CU KLF4.8CND R290 230/1/50 VAL**

Sales code: 314H6000

Engineering code: CUKLF48CND0VE

## Components Condensing-Unit / Spare Parts

Component	Type	Spare part code number
Compressor code	KLF4.8CND	106H2500
Condenser	Condenser (2 rows x 10 tubes)	314S0008
Fan motor	30W	314S0016
Blade code	ø230mm 28°	314S0025
Air flow	463m³/h	
Receiver code	Receiver 0,32 liter	314S0049
Suction valve code	OD ø8mm / 1/3in	-/-
Liquid valve code	OD ø6mm / 1/4in	-/-

## Compressor starting equipment Spare part code number

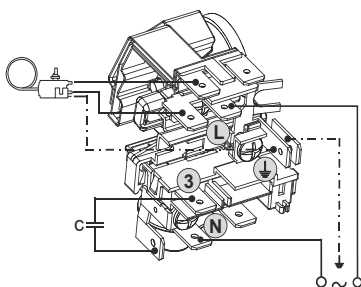
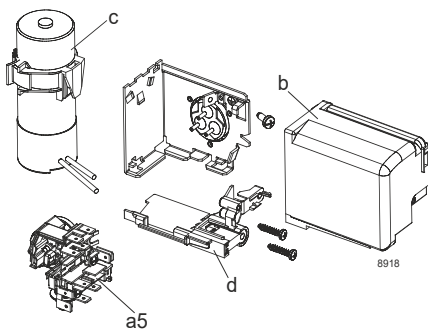
pos. a5 - current relay TY (T1189/L6 117U7073)

pos. c - start capacitor (80µF, 6.3mV 117U5001)

pos. b, d - cover + clamp + screws 103N0600

## Wiring Sketch Compressor

### CSIR



## Model

Designation	<b>CU KLF4.8CND R290 230/1/50 VAL</b>	Sales code:	314H6000
		Engineering code:	CUKLF48CND0VE

## Cooling performance - Conf. 1

Power supply	220-240V / 50Hz 1~	Voltage range	198 - 254V / 50Hz
Refr. charge - tech. limit	200g / 7,1oz		
Starter	HST / capillary tube or expansion valve		
Motor configuration	CSIR		
Refrigerant	R290		
Application	LBP+MBP		
Approvals	Eco design (EU) 2015/1095, CE, UK CA, VDE		

<b>ambient temperature</b>	<b>[°C / °F]</b>	<b>25 / 77</b>							(suction gas temperature [°C / °F]: 20 / 68, subcooling: 0K)
evaporating temperature	[°C / °F]	-40 / -40	-35 / -31	-25 / -13	-20 / -4	-10 / 14	0 / 32	10 / 50	
cooling capacity	[W]	95	136	227	279	401	551	730	
COP	[W/W]	0,72	0,95	1,38	1,6	2,09	2,61	3,11	
cooling capacity	[Btu/h]	326	465	775	954	1371	1882	2492	
power consumption	[W]	132	143	164	174	192	211	235	
current consumption	[A]	1,1	1,1	1,2	1,2	1,3	1,3	1,4	

<b>ambient temperature</b>	<b>[°C / °F]</b>	<b>32 / 90</b>							(suction gas temperature [°C / °F]: 20 / 68, subcooling: 0K)
evaporating temperature	[°C / °F]	-40 / -40	-35 / -31	-25 / -13	-20 / -4	-10 / 14	0 / 32	10 / 50	
cooling capacity	[W]	90	128	211	258	368	503	665	
COP	[W/W]	0,66	0,86	1,24	1,43	1,81	2,22	2,59	
cooling capacity	[Btu/h]	307	437	721	881	1256	1716	2270	
power consumption	[W]	136	148	170	181	203	227	257	
current consumption	[A]	1,1	1,1	1,2	1,2	1,3	1,4	1,5	

<b>ambient temperature</b>	<b>[°C / °F]</b>	<b>38 / 100</b>							(suction gas temperature [°C / °F]: 20 / 68, subcooling: 0K)
evaporating temperature	[°C / °F]	-40 / -40	-35 / -31	-25 / -13	-20 / -4	-10 / 14	0 / 32	10 / 50	
cooling capacity	[W]	78	114	192	235	336	459	609	
COP	[W/W]	0,57	0,76	1,1	1,26	1,58	1,9	2,18	
cooling capacity	[Btu/h]	265	390	656	804	1147	1569	2078	
power consumption	[W]	138	150	174	187	213	242	279	
current consumption	[A]	1,1	1,1	1,2	1,2	1,3	1,4	1,6	

<b>ambient temperature</b>	<b>[°C / °F]</b>	<b>43 / 109</b>							(suction gas temperature [°C / °F]: 20 / 68, subcooling: 0K)
evaporating temperature	[°C / °F]	-40 / -40	-35 / -31	-25 / -13	-20 / -4	-10 / 14	0 / 32		
cooling capacity	[W]	65	101	175	216	309	424		
COP	[W/W]	0,47	0,67	0,99	1,13	1,39	1,66		
cooling capacity	[Btu/h]	223	344	597	737	1057	1449		
power consumption	[W]	137	150	177	191	222	256		
current consumption	[A]	1,1	1,1	1,2	1,2	1,4	1,5		