

Model

Designation

CU KLF5.6CND R290 230/1/50 CAP



Sales code:

314H6002

Engineering code:

CUKLF56CND0CE

Application Data

Power supply	220-240V / 50Hz 1~
Refrigerants	R290
Refr. charge - tech. limit	200g / 7,1oz
Starter	HST / capillary tube or expansion valve
Sound pressure (10m)	

Generic data

Voltage range	198 - 254V / 50Hz
Refrigerant	R290
Application	LBP+MBP
Rated performance	<u>pe=-10°C, Tsuc=20°C, Tamb=25°C, subcooling: 0K</u>
Cooling capacity	460W / 1570Btu/h
Power consumption	224,9W
Current consumption	1,4A
COP/EER	2,04 / 6,98Btu/Wh
Approvals	Eco design (EU) 2015/1095, CE, UK CA, VDE

Compressor

Designation	KLF5.6CND
Motor configuration	CSIR
Locked rotor amperage	10,7A
Rated load amperage	1,7A
Winding resistance main	10,7Ω
Winding resistance aux	17Ω
Oil quantity	152cm ³ / 5,1fl.oz
Oil type	POE
Horsepower rating	1/4 HP

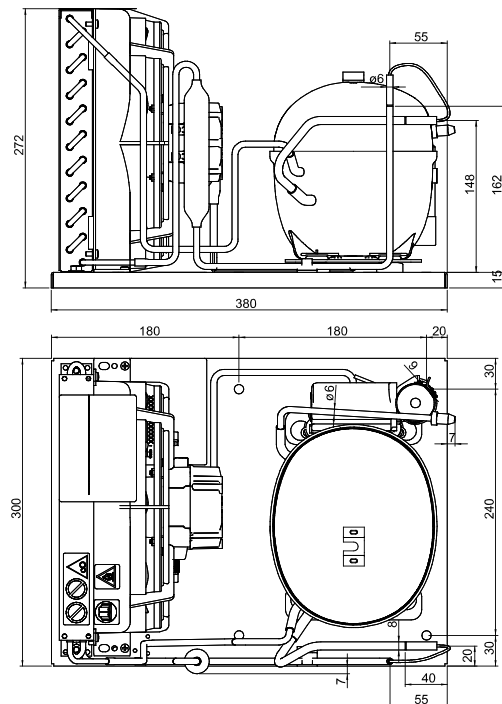
Dimensions

Condensing unit

Height x Width x Depth	272 x 300 x 380 [mm] / 10,7 x 11,8 x 15 [in]
Weight	14,5kg / 32lbs
Suction adapter	OD ø8mm / 1/3in
Discharge adapter	OD ø6mm / 1/4in
Process connector	ø6,2mm / 0,24in

Package data

Height x Width x Depth	300 x 340 x 494 [mm] / 11,8 x 13,4 x 19,4 [in]
Weight	17,5kg / 38,6lbs



Model

Designation **CU KLF5.6CND R290 230/1/50 CAP**

Sales code: 314H6002

Engineering code: CUKLF56CND0CE

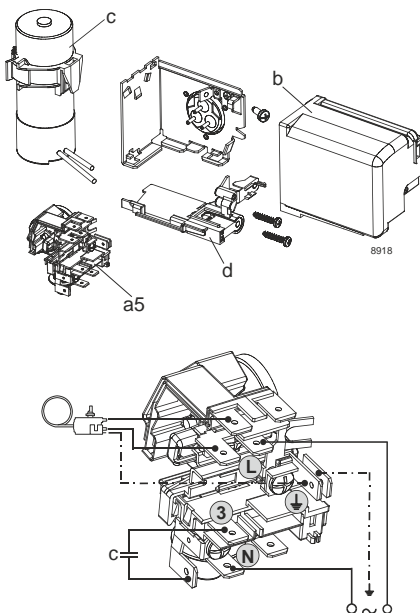
Components Condensing-Unit / Spare Parts

Component	Type	Spare part code number
Compressor code	KLF5.6CND	106H2600
Condenser	Condenser (2 rows x 10 tubes)	SP 314S0008
Fan motor	30W	MP 314S0016
Blade code	ø230mm 28°	SP 314S0025
Air flow	510,4m³/h	
Receiver code	not installed	-/-
Suction valve code	OD ø8mm / 1/3in	-/-
Liquid valve code	OD ø6mm / 1/4in	-/-

Compressor starting equipment	Spare part code number
pos. a5 - current relay TY (T0089/L6-S2)	117U7070
pos. c - start capacitor (80µF, 6.3mm)	117U5001
pos. b, d - cover + clamp + screws	103N0600

Wiring Sketch Compressor

CSIR



Model

Designation	CU KLF5.6CND R290 230/1/50 CAP	Sales code:	314H6002
		Engineering code:	CUKLF56CND0CE

Cooling performance - Conf. 1

Power supply	220-240V / 50Hz 1~	Voltage range	198 - 254V / 50Hz
Refr. charge - tech. limit	200g / 7,1oz		
Starter	HST / capillary tube or expansion valve		
Motor configuration	CSIR		
Refrigerant	R290		
Application	LBP+MBP		
Approvals	Eco design (EU) 2015/1095, CE, UK CA, VDE		

ambient temperature	[°C / °F]	25 / 77 (suction gas temperature [°C / °F]: 20 / 68, subcooling: 0K)						
evaporating temperature	[°C / °F]	-30 / -22	-25 / -13	-20 / -4	-10 / 14	0 / 32	5 / 41	10 / 50
cooling capacity	[W]	188	246	311	460	630	721	817
COP	[W/W]	1,26	1,46	1,65	2,04	2,43	2,61	2,78
cooling capacity	[Btu/h]	641	840	1061	1570	2151	2464	2789
power consumption	[W]	149	169	188	225	259	276	294
current consumption	[A]	1,2	1,2	1,3	1,4	1,5	1,6	1,7

ambient temperature	[°C / °F]	32 / 90 (suction gas temperature [°C / °F]: 20 / 68, subcooling: 0K)						
evaporating temperature	[°C / °F]	-30 / -22	-25 / -13	-20 / -4	-10 / 14	0 / 32	5 / 41	10 / 50
cooling capacity	[W]	192	241	296	425	575	657	742
COP	[W/W]	1,16	1,31	1,47	1,78	2,08	2,21	2,33
cooling capacity	[Btu/h]	654	822	1011	1451	1964	2244	2535
power consumption	[W]	166	184	202	239	277	297	318
current consumption	[A]	1,2	1,3	1,3	1,5	1,6	1,7	1,8

ambient temperature	[°C / °F]	38 / 100 (suction gas temperature [°C / °F]: 20 / 68, subcooling: 0K)						
evaporating temperature	[°C / °F]	-30 / -22	-25 / -13	-20 / -4	-10 / 14	0 / 32	5 / 41	
cooling capacity	[W]	182	226	276	392	527	602	
COP	[W/W]	1,04	1,18	1,31	1,57	1,8	1,91	
cooling capacity	[Btu/h]	623	773	942	1337	1801	2055	
power consumption	[W]	175	192	211	250	293	316	
current consumption	[A]	1,3	1,3	1,4	1,5	1,7	1,8	

ambient temperature	[°C / °F]	43 / 109 (suction gas temperature [°C / °F]: 20 / 68, subcooling: 0K)			
evaporating temperature	[°C / °F]	-30 / -22	-25 / -13	-20 / -4	-10 / 14
cooling capacity	[W]	168	209	255	362
COP	[W/W]	0,94	1,06	1,18	1,4
cooling capacity	[Btu/h]	575	714	871	1236
power consumption	[W]	179	197	216	258
current consumption	[A]	1,3	1,3	1,4	1,5