

Model

Designation **CU NL6.1MF MG_Y 230/1/50 CAP**



Sales code: 314G5000
Engineering code: CUNL61MF000CE

Application Data

Power supply	220-240V / 50Hz 1~
Refrigerants	R134a-R513A
Refr. charge - tech. limit	600g / 21,2oz
Starter	HST / capillary tube or expansion valve
Sound pressure (10m)	24,2dB(A)

Configuration data

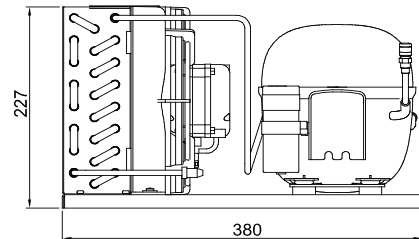
	Conf. 1	Conf. 2
Voltage range	187 - 254V / 50Hz	187 - 254V / 50Hz
Refrigerant	R134a	R513A
Application	MBP	MBP

Rated performance	<u>pe=-10°C, Tsuc=20°C, Tamb=25°C, subccoling: 2K</u>	
Cooling capacity	326W / 1114Btu/h	342W / 1168Btu/h
Power consumption	174,1W	184,8W
Current consumption	1,4A	1,5A
COP/EER	1,87 / 6,4Btu/Wh	1,85 / 6,32Btu/Wh

Approvals	Eco design (EU) 2015/1095, CE, UK CA, VDE	Eco design (EU) 2015/1095, CE, UK CA, VDE
-----------	--	--

Compressor

Designation	NL6.1MF
Motor configuration	CSIR
Locked rotor amperage	9,2A
Rated load amperage	1,7A
Winding resistance main	10,2Ω
Winding resistance aux	16,4Ω
Oil quantity	270cm ³ / 9,1fl.oz
Oil type	POE
Horsepower rating	1/8 HP



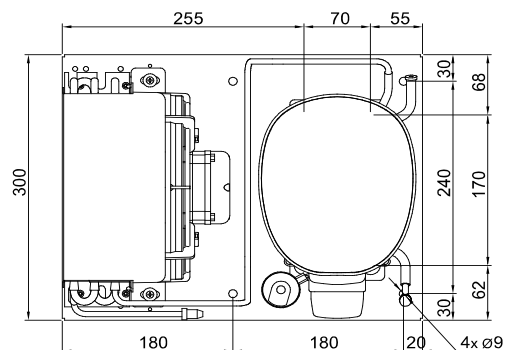
Dimensions

Condensing unit

Height x Width x Depth	227 x 300 x 380 [mm] / 8,9 x 11,8 x 15 [in]
Weight	14,9kg / 32,9lbs
Suction adapter	OD ø8mm / 1/3in
Discharge adapter	OD ø6mm / 1/4in
Process connector	ø6,2mm / 0,24in

Package data

Height x Width x Depth	300 x 400 x 500 [mm] / 11,8 x 15,7 x 19,7 [in]
Weight	17,9kg / 39,5lbs



Model

Designation **CU NL6.1MF MG_Y 230/1/50 CAP**

Sales code: 314G5000
Engineering code: CUNL61MF000CE

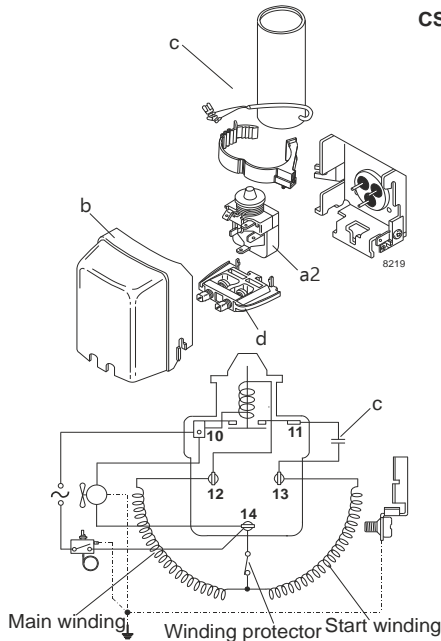
Components Condensing-Unit / Spare Parts

Component	Type	Spare part code number
Compressor code	NL6.1MF	105G6660
Condenser	Condenser (3 rows x 8 tubes)	SP 314S0001
Fan motor	5W	MP 314S0018
Blade code	ø200mm 28°	SP 314S0023
Air flow	256,1m³/h	
Receiver code	not installed	-/-
Suction valve code	OD ø8mm / 1/3in	-/-
Liquid valve code	OD ø6mm / 1/4in	-/-

Compressor starting equipment	Spare part code number
pos. a2 - relay	117U6015
pos. c - start capacitor (80µF)	117U5015
pos. b - plastic cover	103N2011
pos. d - cord relief	103N1010

Wiring Sketch Compressor

Wiring Sketch Condensing Unit



Model

Designation **CU NL6.1MF MG_Y 230/1/50 CAP**

Sales code: 314G5000

Engineering code: CUNL61MF000CE

Cooling performance - Conf. 1

Power supply	220-240V / 50Hz 1~	Voltage range	187 - 254V / 50Hz
Refr. charge - tech. limit	600g / 21,2oz		
Starter	HST / capillary tube or expansion valve		
Motor configuration	CSIR		
Refrigerant	R134a		
Application	MBP		
Approvals	Eco design (EU) 2015/1095, CE, UK CA, VDE		

ambient temperature	[°C / °F]	25 / 77 (suction gas temperature [°C / °F]: 20 / 68, subcooling: 2K)						
evaporating temperature	[°C / °F]	-20 / -4	-15 / 5	-10 / 14	-5 / 23	0 / 32	5 / 41	15 / 59
cooling capacity	[W]	206	262	326	398	477	564	753
COP	[W/W]	1,43	1,65	1,87	2,08	2,29	2,47	2,74
cooling capacity	[Btu/h]	705	895	1114	1359	1630	1925	2572
power consumption	[W]	144	159	174	191	208	228	275
current consumption	[A]	1,4	1,4	1,4	1,4	1,5	1,6	1,7

ambient temperature	[°C / °F]	32 / 90 (suction gas temperature [°C / °F]: 20 / 68, subcooling: 2K)						
evaporating temperature	[°C / °F]	-20 / -4	-15 / 5	-10 / 14	-5 / 23	0 / 32	5 / 41	15 / 59
cooling capacity	[W]	186	237	296	361	434	513	685
COP	[W/W]	1,26	1,45	1,64	1,81	1,99	2,15	2,38
cooling capacity	[Btu/h]	635	810	1010	1235	1482	1751	2341
power consumption	[W]	148	164	181	199	218	239	288
current consumption	[A]	1,4	1,4	1,4	1,5	1,5	1,6	1,8

ambient temperature	[°C / °F]	38 / 100 (suction gas temperature [°C / °F]: 20 / 68, subcooling: 2K)						
evaporating temperature	[°C / °F]	-20 / -4	-15 / 5	-10 / 14	-5 / 23	0 / 32	5 / 41	
cooling capacity	[W]	168	215	269	330	396	468	
COP	[W/W]	1,11	1,27	1,44	1,6	1,75	1,88	
cooling capacity	[Btu/h]	573	735	919	1125	1352	1599	
power consumption	[W]	151	169	187	206	226	249	
current consumption	[A]	1,4	1,4	1,4	1,5	1,6	1,6	

ambient temperature	[°C / °F]	43 / 109 (suction gas temperature [°C / °F]: 20 / 68, subcooling: 2K)						
evaporating temperature	[°C / °F]	-20 / -4	-15 / 5	-10 / 14	-5 / 23	0 / 32	5 / 41	
cooling capacity	[W]	153	197	247	302	364	430	
COP	[W/W]	1	1,15	1,29	1,43	1,56	1,68	
cooling capacity	[Btu/h]	521	671	842	1033	1243	1470	
power consumption	[W]	153	172	191	211	233	256	
current consumption	[A]	1,4	1,4	1,5	1,5	1,6	1,7	

Model

Designation **CU NL6.1MF MG_Y 230/1/50 CAP**

Sales code: 314G5000

Engineering code: CUNL61MF000CE

Cooling performance - Conf. 2

Power supply	220-240V / 50Hz 1~	Voltage range	187 - 254V / 50Hz
Refr. charge - tech. limit	600g / 21,2oz		
Starter	HST / capillary tube or expansion valve		
Motor configuration	CSIR		
Refrigerant	R513A		
Application	MBP		
Approvals	Eco design (EU) 2015/1095, CE, UK CA, VDE		

ambient temperature	[°C / °F]	25 / 77 (suction gas temperature [°C / °F]: 20 / 68, subcooling: 2K)						
evaporating temperature	[°C / °F]	-20 / -4	-15 / 5	-10 / 14	-5 / 23	0 / 32	5 / 41	15 / 59
cooling capacity	[W]	221	278	342	413	491	575	757
COP	[W/W]	1,44	1,64	1,85	2,04	2,23	2,4	2,65
cooling capacity	[Btu/h]	756	949	1168	1412	1678	1964	2584
power consumption	[W]	154	169	185	202	220	240	286
current consumption	[A]	1,4	1,4	1,5	1,5	1,5	1,6	1,7

ambient temperature	[°C / °F]	32 / 90 (suction gas temperature [°C / °F]: 20 / 68, subcooling: 2K)						
evaporating temperature	[°C / °F]	-20 / -4	-15 / 5	-10 / 14	-5 / 23	0 / 32	5 / 41	15 / 59
cooling capacity	[W]	198	250	308	373	443	519	682
COP	[W/W]	1,25	1,43	1,6	1,77	1,93	2,07	2,28
cooling capacity	[Btu/h]	677	854	1052	1273	1513	1772	2330
power consumption	[W]	159	175	193	211	230	251	299
current consumption	[A]	1,4	1,4	1,5	1,5	1,6	1,6	1,7

ambient temperature	[°C / °F]	38 / 100 (suction gas temperature [°C / °F]: 20 / 68, subcooling: 2K)						
evaporating temperature	[°C / °F]	-20 / -4	-15 / 5	-10 / 14	-5 / 23	0 / 32	5 / 41	
cooling capacity	[W]	178	225	278	337	401	469	
COP	[W/W]	1,1	1,25	1,4	1,55	1,68	1,8	
cooling capacity	[Btu/h]	608	769	951	1151	1369	1603	
power consumption	[W]	162	180	199	218	239	261	
current consumption	[A]	1,4	1,4	1,5	1,5	1,6	1,6	

ambient temperature	[°C / °F]	43 / 109 (suction gas temperature [°C / °F]: 20 / 68, subcooling: 2K)						
evaporating temperature	[°C / °F]	-20 / -4	-15 / 5	-10 / 14	-5 / 23	0 / 32	5 / 41	
cooling capacity	[W]	161	204	253	307	365	428	
COP	[W/W]	0,98	1,11	1,24	1,37	1,48	1,59	
cooling capacity	[Btu/h]	550	698	865	1048	1247	1461	
power consumption	[W]	165	184	204	224	246	269	
current consumption	[A]	1,4	1,4	1,5	1,5	1,6	1,7	