

Model

Designation **CU NL6.1MF MG_Y 230/1/50 VAL**



Sales code: 314G5001
Engineering code: CUNL61MF000VE

Application Data

| | |
|----------------------------|---|
| Power supply | 220-240V / 50Hz 1~ |
| Refrigerants | R134a-R513A |
| Refr. charge - tech. limit | 600g / 21,2oz |
| Starter | HST / capillary tube or expansion valve |
| Sound pressure (10m) | 24,2dB(A) |

Configuration data

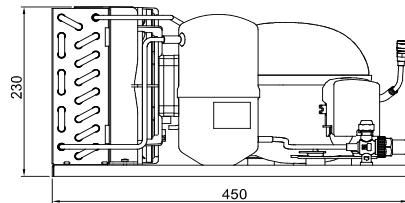
| | Conf. 1 | Conf. 2 |
|---------------|-------------------|-------------------|
| Voltage range | 187 - 254V / 50Hz | 187 - 254V / 50Hz |
| Refrigerant | R134a | R513A |
| Application | MBP | MBP |

| Rated performance | <u>pe=-10°C, Tsuc=20°C, Tamb=25°C, subccoling: 2K</u> | |
|---------------------|---|-------------------|
| Cooling capacity | 326W / 1114Btu/h | 342W / 1168Btu/h |
| Power consumption | 174,1W | 184,8W |
| Current consumption | 1,4A | 1,5A |
| COP/EER | 1,87 / 6,4Btu/Wh | 1,85 / 6,32Btu/Wh |

| Approvals | Eco design (EU) 2015/1095, CE, UK CA, VDE | Eco design (EU) 2015/1095, CE, UK CA, VDE |
|-----------|--|--|
|-----------|--|--|

Compressor

| | |
|-------------------------|-------------------------------|
| Designation | NL6.1MF |
| Motor configuration | CSIR |
| Locked rotor amperage | 9,2A |
| Rated load amperage | 1,7A |
| Winding resistance main | 10,2Ω |
| Winding resistance aux | 16,4Ω |
| Oil quantity | 270cm ³ / 9,1fl.oz |
| Oil type | POE |
| Horsepower rating | 1/8 HP |



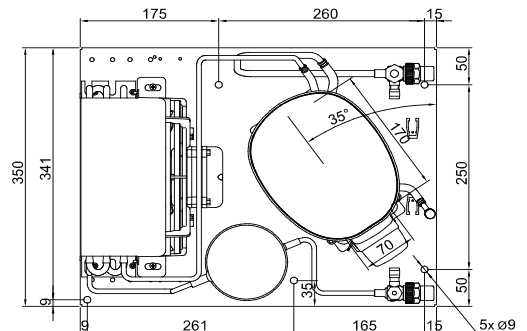
Dimensions

Condensing unit

| | |
|------------------------|---|
| Height x Width x Depth | 230 x 350 x 450 [mm] / 9,1 x 13,8 x 17,7 [in] |
| Weight | 16,7kg / 36,7lbs |
| Suction adapter | FLARE 1/4" |
| Discharge adapter | FLARE 1/4" |
| Process connector | ø6,2mm / 0,24in |

Package data

| | |
|------------------------|--|
| Height x Width x Depth | 300 x 450 x 550 [mm] / 11,8 x 17,7 x 21,7 [in] |
| Weight | 19,7kg / 43,3lbs |



Model

Designation **CU NL6.1MF MG_Y 230/1/50 VAL**

Sales code: 314G5001
Engineering code: CUNL61MF000VE

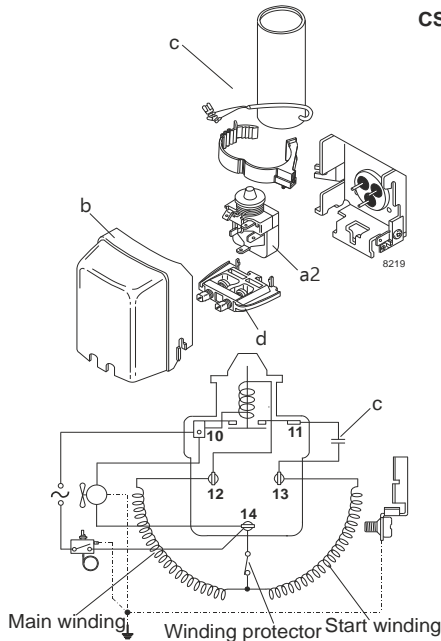
Components Condensing-Unit / Spare Parts

| Component | Type | Spare part code number |
|--------------------|------------------------------|------------------------|
| Compressor code | NL6.1MF | 105G6660 |
| Condenser | Condenser (3 rows x 8 tubes) | 0830210A70 |
| Fan motor | 5W | AA600709X |
| Blade code | ø200mm 28° | A200-28 |
| Air flow | 256,1m³/h | |
| Receiver code | Receiver 1,3 liter | 100/200VS00 |
| Suction valve code | FLARE 1/4" | FLARE 1/4" |
| Liquid valve code | FLARE 1/4" | FLARE 1/4" |

| Compressor starting equipment | Spare part code number |
|---------------------------------|------------------------|
| pos. a2 - relay | 117U6015 |
| pos. c - start capacitor (80µF) | 117U5015 |
| pos. b - plastic cover | 103N2011 |
| pos. d - cord relief | 103N1010 |

Wiring Sketch Compressor

Wiring Sketch Condensing Unit



Model

Designation **CU NL6.1MF MG_Y 230/1/50 VAL**

Sales code: 314G5001

Engineering code: CUNL61MF000VE

Cooling performance - Conf. 1

| | | | |
|----------------------------|---|---------------|-------------------|
| Power supply | 220-240V / 50Hz 1~ | Voltage range | 187 - 254V / 50Hz |
| Refr. charge - tech. limit | 600g / 21,2oz | | |
| Starter | HST / capillary tube or expansion valve | | |
| Motor configuration | CSIR | | |
| Refrigerant | R134a | | |
| Application | MBP | | |
| Approvals | Eco design (EU) 2015/1095, CE, UK CA, VDE | | |

| ambient temperature | [°C / °F] | 25 / 77 (suction gas temperature [°C / °F]: 20 / 68, subcooling: 2K) | | | | | | |
|-------------------------|-----------|--|---------|----------|---------|--------|--------|---------|
| evaporating temperature | [°C / °F] | -20 / -4 | -15 / 5 | -10 / 14 | -5 / 23 | 0 / 32 | 5 / 41 | 15 / 59 |
| cooling capacity | [W] | 206 | 262 | 326 | 398 | 477 | 564 | 753 |
| COP | [W/W] | 1,43 | 1,65 | 1,87 | 2,08 | 2,29 | 2,47 | 2,74 |
| cooling capacity | [Btu/h] | 705 | 895 | 1114 | 1359 | 1630 | 1925 | 2572 |
| power consumption | [W] | 144 | 159 | 174 | 191 | 208 | 228 | 275 |
| current consumption | [A] | 1,4 | 1,4 | 1,4 | 1,4 | 1,5 | 1,6 | 1,7 |

| ambient temperature | [°C / °F] | 32 / 90 (suction gas temperature [°C / °F]: 20 / 68, subcooling: 2K) | | | | | | |
|-------------------------|-----------|--|---------|----------|---------|--------|--------|---------|
| evaporating temperature | [°C / °F] | -20 / -4 | -15 / 5 | -10 / 14 | -5 / 23 | 0 / 32 | 5 / 41 | 15 / 59 |
| cooling capacity | [W] | 186 | 237 | 296 | 361 | 434 | 513 | 685 |
| COP | [W/W] | 1,26 | 1,45 | 1,64 | 1,81 | 1,99 | 2,15 | 2,38 |
| cooling capacity | [Btu/h] | 635 | 810 | 1010 | 1235 | 1482 | 1751 | 2341 |
| power consumption | [W] | 148 | 164 | 181 | 199 | 218 | 239 | 288 |
| current consumption | [A] | 1,4 | 1,4 | 1,4 | 1,5 | 1,5 | 1,6 | 1,8 |

| ambient temperature | [°C / °F] | 38 / 100 (suction gas temperature [°C / °F]: 20 / 68, subcooling: 2K) | | | | | | |
|-------------------------|-----------|---|---------|----------|---------|--------|--------|--|
| evaporating temperature | [°C / °F] | -20 / -4 | -15 / 5 | -10 / 14 | -5 / 23 | 0 / 32 | 5 / 41 | |
| cooling capacity | [W] | 168 | 215 | 269 | 330 | 396 | 468 | |
| COP | [W/W] | 1,11 | 1,27 | 1,44 | 1,6 | 1,75 | 1,88 | |
| cooling capacity | [Btu/h] | 573 | 735 | 919 | 1125 | 1352 | 1599 | |
| power consumption | [W] | 151 | 169 | 187 | 206 | 226 | 249 | |
| current consumption | [A] | 1,4 | 1,4 | 1,4 | 1,5 | 1,6 | 1,6 | |

| ambient temperature | [°C / °F] | 43 / 109 (suction gas temperature [°C / °F]: 20 / 68, subcooling: 2K) | | | | | | |
|-------------------------|-----------|---|---------|----------|---------|--------|--------|--|
| evaporating temperature | [°C / °F] | -20 / -4 | -15 / 5 | -10 / 14 | -5 / 23 | 0 / 32 | 5 / 41 | |
| cooling capacity | [W] | 153 | 197 | 247 | 302 | 364 | 430 | |
| COP | [W/W] | 1 | 1,15 | 1,29 | 1,43 | 1,56 | 1,68 | |
| cooling capacity | [Btu/h] | 521 | 671 | 842 | 1033 | 1243 | 1470 | |
| power consumption | [W] | 153 | 172 | 191 | 211 | 233 | 256 | |
| current consumption | [A] | 1,4 | 1,4 | 1,5 | 1,5 | 1,6 | 1,7 | |

Model

Designation **CU NL6.1MF MG_Y 230/1/50 VAL**

Sales code: 314G5001

Engineering code: CUNL61MF000VE

Cooling performance - Conf. 2

| | | | |
|----------------------------|---|---------------|-------------------|
| Power supply | 220-240V / 50Hz 1~ | Voltage range | 187 - 254V / 50Hz |
| Refr. charge - tech. limit | 600g / 21,2oz | | |
| Starter | HST / capillary tube or expansion valve | | |
| Motor configuration | CSIR | | |
| Refrigerant | R513A | | |
| Application | MBP | | |
| Approvals | Eco design (EU) 2015/1095, CE, UK CA, VDE | | |

| ambient temperature | [°C / °F] | 25 / 77 (suction gas temperature [°C / °F]: 20 / 68, subcooling: 2K) | | | | | | |
|-------------------------|-----------|--|---------|----------|---------|--------|--------|---------|
| evaporating temperature | [°C / °F] | -20 / -4 | -15 / 5 | -10 / 14 | -5 / 23 | 0 / 32 | 5 / 41 | 15 / 59 |
| cooling capacity | [W] | 221 | 278 | 342 | 413 | 491 | 575 | 757 |
| COP | [W/W] | 1,44 | 1,64 | 1,85 | 2,04 | 2,23 | 2,4 | 2,65 |
| cooling capacity | [Btu/h] | 756 | 949 | 1168 | 1412 | 1678 | 1964 | 2584 |
| power consumption | [W] | 154 | 169 | 185 | 202 | 220 | 240 | 286 |
| current consumption | [A] | 1,4 | 1,4 | 1,5 | 1,5 | 1,5 | 1,6 | 1,7 |

| ambient temperature | [°C / °F] | 32 / 90 (suction gas temperature [°C / °F]: 20 / 68, subcooling: 2K) | | | | | | |
|-------------------------|-----------|--|---------|----------|---------|--------|--------|---------|
| evaporating temperature | [°C / °F] | -20 / -4 | -15 / 5 | -10 / 14 | -5 / 23 | 0 / 32 | 5 / 41 | 15 / 59 |
| cooling capacity | [W] | 198 | 250 | 308 | 373 | 443 | 519 | 682 |
| COP | [W/W] | 1,25 | 1,43 | 1,6 | 1,77 | 1,93 | 2,07 | 2,28 |
| cooling capacity | [Btu/h] | 677 | 854 | 1052 | 1273 | 1513 | 1772 | 2330 |
| power consumption | [W] | 159 | 175 | 193 | 211 | 230 | 251 | 299 |
| current consumption | [A] | 1,4 | 1,4 | 1,5 | 1,5 | 1,6 | 1,6 | 1,7 |

| ambient temperature | [°C / °F] | 38 / 100 (suction gas temperature [°C / °F]: 20 / 68, subcooling: 2K) | | | | | | |
|-------------------------|-----------|---|---------|----------|---------|--------|--------|--|
| evaporating temperature | [°C / °F] | -20 / -4 | -15 / 5 | -10 / 14 | -5 / 23 | 0 / 32 | 5 / 41 | |
| cooling capacity | [W] | 178 | 225 | 278 | 337 | 401 | 469 | |
| COP | [W/W] | 1,1 | 1,25 | 1,4 | 1,55 | 1,68 | 1,8 | |
| cooling capacity | [Btu/h] | 608 | 769 | 951 | 1151 | 1369 | 1603 | |
| power consumption | [W] | 162 | 180 | 199 | 218 | 239 | 261 | |
| current consumption | [A] | 1,4 | 1,4 | 1,5 | 1,5 | 1,6 | 1,6 | |

| ambient temperature | [°C / °F] | 43 / 109 (suction gas temperature [°C / °F]: 20 / 68, subcooling: 2K) | | | | | | |
|-------------------------|-----------|---|---------|----------|---------|--------|--------|--|
| evaporating temperature | [°C / °F] | -20 / -4 | -15 / 5 | -10 / 14 | -5 / 23 | 0 / 32 | 5 / 41 | |
| cooling capacity | [W] | 161 | 204 | 253 | 307 | 365 | 428 | |
| COP | [W/W] | 0,98 | 1,11 | 1,24 | 1,37 | 1,48 | 1,59 | |
| cooling capacity | [Btu/h] | 550 | 698 | 865 | 1048 | 1247 | 1461 | |
| power consumption | [W] | 165 | 184 | 204 | 224 | 246 | 269 | |
| current consumption | [A] | 1,4 | 1,4 | 1,5 | 1,5 | 1,6 | 1,7 | |