

Model

Designation **CU NL8.4MF MG_Y 230/1/50 VAL**



Sales code: 314G5005
Engineering code: CUNL84MF000VE

Application Data

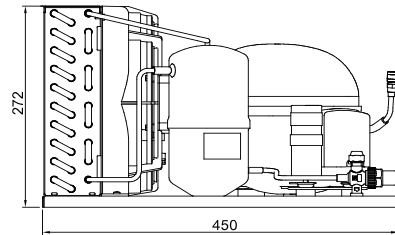
Power supply	220-240V / 50Hz 1~
Refrigerants	R134a-R513A
Refr. charge - tech. limit	600g / 21,2oz
Starter	HST / capillary tube or expansion valve
Sound pressure (10m)	26,3dB(A)

Configuration data

	Conf. 1	Conf. 2
Voltage range	187 - 254V / 50Hz	187 - 254V / 50Hz
Refrigerant	R134a	R513A
Application	MBP+HBP	MBP+HBP
Rated performance	<u>pe=-10°C, Tsuc=20°C, Tamb=25°C, subccoling: 2K</u>	
Cooling capacity	451W / 1539Btu/h	472W / 1611Btu/h
Power consumption	248,5W	263,1W
Current consumption	1,9A	2A
COP/EER	1,81 / 6,19Btu/Wh	1,79 / 6,12Btu/Wh
Approvals	Eco design (EU) 2015/1095, CE, UK CA, VDE	Eco design (EU) 2015/1095, CE, UK CA, VDE

Compressor

Designation	NL8.4MF
Motor configuration	CSIR
Locked rotor amperage	10,6A
Rated load amperage	2,2A
Winding resistance main	7,1Ω
Winding resistance aux	9,6Ω
Oil quantity	270cm ³ / 9,1fl.oz
Oil type	POE
Horsepower rating	1/5 HP



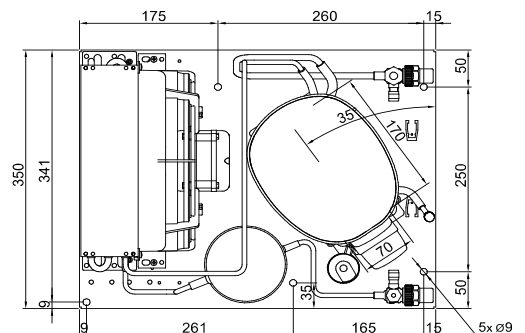
Dimensions

Condensing unit

Height x Width x Depth	272 x 350 x 450 [mm] / 10,7 x 13,8 x 17,7 [in]
Weight	18,1kg / 39,9lbs
Suction adapter	FLARE 1/4"
Discharge adapter	FLARE 1/4"
Process connector	ø6,2mm / 0,24in

Package data

Height x Width x Depth	350 x 450 x 550 [mm] / 13,8 x 17,7 x 21,7 [in]
Weight	21,1kg / 46,5lbs



Model

Designation **CU NL8.4MF MG_Y 230/1/50 VAL**

Sales code: 314G5005
Engineering code: CUNL84MF000VE

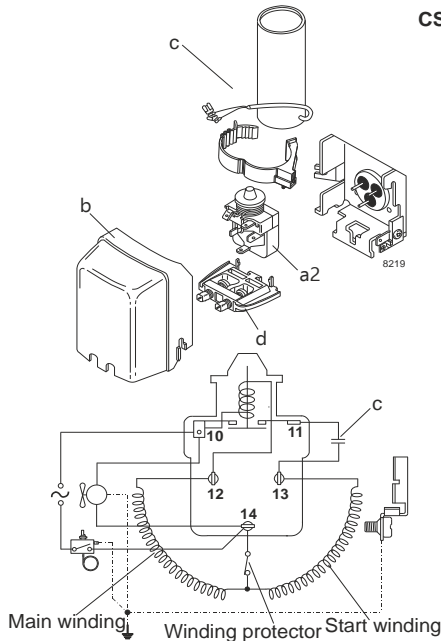
Components Condensing-Unit / Spare Parts

Component	Type	Spare part code number
Compressor code	NL8.4MF	105G7802
Condenser	Condenser (3 rows x 10 tubes)	SP 314S0002
Fan motor	10W	MP 314S0019
Blade code	ø230mm 22°	SP 314S0024
Air flow	385,8m³/h	
Receiver code	Receiver 1,3 liter	MP 314S0036
Suction valve code	FLARE 1/4"	FLARE 1/4"
Liquid valve code	FLARE 1/4"	FLARE 1/4"

Compressor starting equipment	Spare part code number
pos. a2 - relay	117U6016
pos. c - start capacitor (80µF)	117U5015
pos. b - plastic cover	103N2011
pos. d - cord relief	103N1010

Wiring Sketch Compressor

Wiring Sketch Condensing Unit



Model

Designation **CU NL8.4MF MG_Y 230/1/50 VAL**

Sales code: 314G5005

Engineering code: CUNL84MF000VE

Cooling performance - Conf. 1

Power supply	220-240V / 50Hz 1~	Voltage range	187 - 254V / 50Hz
Refr. charge - tech. limit	600g / 21,2oz		
Starter	HST / capillary tube or expansion valve		
Motor configuration	CSIR		
Refrigerant	R134a		
Application	MBP+HBP		
Approvals	Eco design (EU) 2015/1095, CE, UK CA, VDE		

ambient temperature	[°C / °F]	25 / 77 (suction gas temperature [°C / °F]: 20 / 68, subcooling: 2K)						
evaporating temperature	[°C / °F]	-20 / -4	-15 / 5	-10 / 14	-5 / 23	0 / 32	5 / 41	15 / 59
cooling capacity	[W]	292	366	451	545	650	762	1007
COP	[W/W]	1,42	1,62	1,81	1,99	2,15	2,26	2,4
cooling capacity	[Btu/h]	996	1249	1539	1863	2219	2604	3441
power consumption	[W]	205	226	249	274	303	337	420
current consumption	[A]	1,9	1,9	1,9	2	2,1	2,2	2,7

ambient temperature	[°C / °F]	32 / 90 (suction gas temperature [°C / °F]: 20 / 68, subcooling: 2K)						
evaporating temperature	[°C / °F]	-20 / -4	-15 / 5	-10 / 14	-5 / 23	0 / 32	5 / 41	15 / 59
cooling capacity	[W]	263	331	409	496	591	695	919
COP	[W/W]	1,25	1,42	1,59	1,74	1,87	1,97	2,09
cooling capacity	[Btu/h]	899	1132	1397	1693	2020	2373	3139
power consumption	[W]	210	233	257	285	316	352	439
current consumption	[A]	1,9	1,9	2	2	2,1	2,2	2,7

ambient temperature	[°C / °F]	38 / 100 (suction gas temperature [°C / °F]: 20 / 68, subcooling: 2K)						
evaporating temperature	[°C / °F]	-20 / -4	-15 / 5	-10 / 14	-5 / 23	0 / 32	5 / 41	
cooling capacity	[W]	240	303	374	454	542	638	
COP	[W/W]	1,12	1,27	1,41	1,54	1,66	1,75	
cooling capacity	[Btu/h]	821	1035	1279	1552	1853	2178	
power consumption	[W]	214	238	265	294	327	365	
current consumption	[A]	1,9	1,9	2	2	2,1	2,3	

ambient temperature	[°C / °F]	43 / 109 (suction gas temperature [°C / °F]: 20 / 68, subcooling: 2K)						
evaporating temperature	[°C / °F]	-20 / -4	-15 / 5	-10 / 14	-5 / 23	0 / 32		
cooling capacity	[W]	222	280	347	421	502		
COP	[W/W]	1,03	1,16	1,28	1,39	1,49		
cooling capacity	[Btu/h]	758	957	1184	1437	1715		
power consumption	[W]	216	242	271	302	337		
current consumption	[A]	1,9	1,9	2	2	2,1		

Model

Designation **CU NL8.4MF MG_Y 230/1/50 VAL**

Sales code: 314G5005

Engineering code: CUNL84MF000VE

Cooling performance - Conf. 2

Power supply	220-240V / 50Hz 1~	Voltage range	187 - 254V / 50Hz
Refr. charge - tech. limit	600g / 21,2oz		
Starter	HST / capillary tube or expansion valve		
Motor configuration	CSIR		
Refrigerant	R513A		
Application	MBP+HBP		
Approvals	Eco design (EU) 2015/1095, CE, UK CA, VDE		

ambient temperature	[°C / °F]	25 / 77 (suction gas temperature [°C / °F]: 20 / 68, subcooling: 2K)						
evaporating temperature	[°C / °F]	-20 / -4	-15 / 5	-10 / 14	-5 / 23	0 / 32	5 / 41	15 / 59
cooling capacity	[W]	312	387	472	565	667	775	1007
COP	[W/W]	1,43	1,62	1,79	1,96	2,09	2,2	2,31
cooling capacity	[Btu/h]	1066	1322	1610	1930	2277	2646	3439
power consumption	[W]	218	239	263	289	319	353	436
current consumption	[A]	1,9	1,9	2	2,1	2,2	2,3	2,5

ambient temperature	[°C / °F]	32 / 90 (suction gas temperature [°C / °F]: 20 / 68, subcooling: 2K)						
evaporating temperature	[°C / °F]	-20 / -4	-15 / 5	-10 / 14	-5 / 23	0 / 32	5 / 41	15 / 59
cooling capacity	[W]	281	349	425	510	602	700	910
COP	[W/W]	1,25	1,41	1,56	1,69	1,81	1,9	2
cooling capacity	[Btu/h]	959	1191	1452	1742	2056	2391	3107
power consumption	[W]	224	247	273	301	333	368	456
current consumption	[A]	1,9	2	2	2,1	2,2	2,3	2,5

ambient temperature	[°C / °F]	38 / 100 (suction gas temperature [°C / °F]: 20 / 68, subcooling: 2K)						
evaporating temperature	[°C / °F]	-20 / -4	-15 / 5	-10 / 14	-5 / 23	0 / 32	5 / 41	
cooling capacity	[W]	255	317	387	464	547	636	
COP	[W/W]	1,12	1,25	1,38	1,49	1,59	1,66	
cooling capacity	[Btu/h]	871	1082	1320	1583	1869	2173	
power consumption	[W]	228	253	281	311	344	382	
current consumption	[A]	1,9	2	2,1	2,1	2,2	2,3	

ambient temperature	[°C / °F]	43 / 109 (suction gas temperature [°C / °F]: 20 / 68, subcooling: 2K)						
evaporating temperature	[°C / °F]	-20 / -4	-15 / 5	-10 / 14	-5 / 23	0 / 32		
cooling capacity	[W]	234	291	355	426	502		
COP	[W/W]	1,01	1,13	1,24	1,34	1,42		
cooling capacity	[Btu/h]	800	995	1213	1453	1716		
power consumption	[W]	232	258	287	319	354		
current consumption	[A]	1,9	2	2,1	2,2	2,3		