

## Model

Designation **CU NLE10CN R290 230/1/50 CAP**



Sales code: 314H5001  
Engineering code: CUNLE10CN00CE

## Application Data

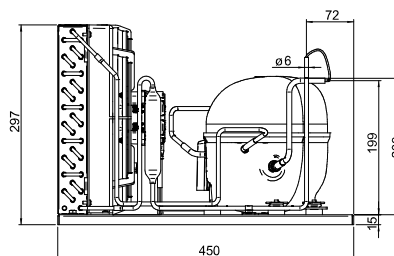
Power supply 220-240V / 50Hz 1~  
Refrigerants R290  
Refr. charge - tech. limit 150g / 5,3oz  
Starter HST / capillary tube or expansion valve  
Sound pressure (10m) 32,4dB(A)

## Generic data

Voltage range 198 - 254V / 50Hz  
Refrigerant R290  
Application LBP+MBP  
  
Rated performance pe=-10°C, Tsuc=20°C, Tamb=25°C, subccoling: 0K  
Cooling capacity 809W / 2764Btu/h  
Power consumption 417,7W  
Current consumption 2,5A  
COP/EER 1,94 / 6,62Btu/Wh  
  
Approvals Eco design (EU) 2015/1095,  
CE, UK CA, VDE

## Compressor

Designation **NLE10CN**  
Motor configuration CSIR  
Locked rotor amperage 12,25A  
Rated load amperage 2,58A  
Winding resistance main 7,79Ω  
Winding resistance aux 18,39Ω  
Oil quantity 270cm<sup>3</sup> / 9,1fl.oz  
Oil type POE  
Horsepower rating 1/2 HP



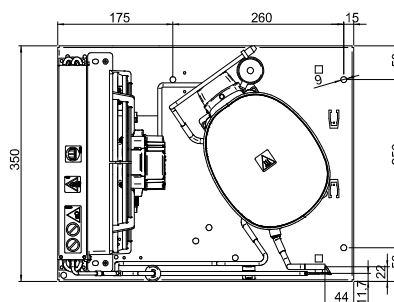
## Dimensions

### Condensing unit

Height x Width x Depth 297 x 350 x 450 [mm] / 11,7 x 13,8 x 17,7 [in]  
Weight 18,7kg / 41,1lbs  
Suction adapter OD ø8mm / 1/3in  
Discharge adapter OD ø6mm / 1/4in  
Process connector ø6,2mm / 0,24in

### Package data

Height x Width x Depth 340 x 372 x 570 [mm] / 13,4 x 14,6 x 22,4 [in]  
Weight 21,7kg / 47,8lbs



## Model

Designation **CU NLE10CN R290 230/1/50 CAP**

Sales code: 314H5001

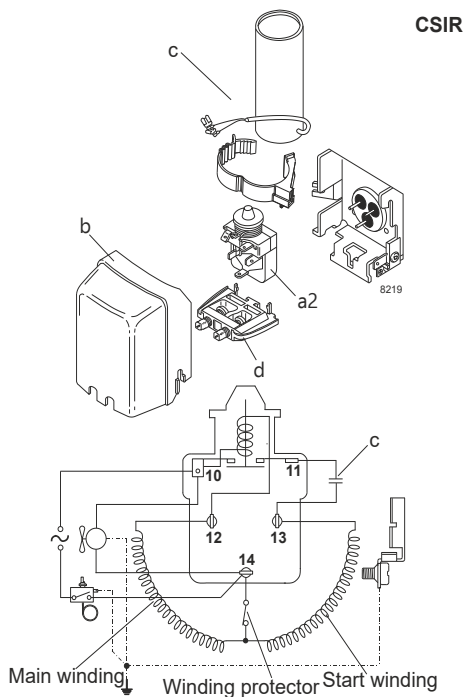
Engineering code: CUNLE10CN00CE

## Components Condensing-Unit / Spare Parts

Component	Type	Spare part code number
Compressor code	NLE10CN	105H6175
Condenser	Condenser (3 rows x 11 tubes)	314S0010
Fan motor	30W	314S0016
Blade code	ø254mm 22°	314S0026
Air flow	551,4m³/h	
Receiver code	not installed	-/-
Suction valve code	OD ø8mm / 1/3in	-/-
Liquid valve code	OD ø6mm / 1/4in	-/-

Compressor starting equipment	Spare part code number
pos. a2 - relay	117U7002
pos. c - start capacitor (80µF)	117U5015
pos. b - plastic cover	103N2010
pos. d - cord relief	103N1010

## Wiring Sketch Compressor



## Model

Designation	<b>CU NLE10CN R290 230/1/50 CAP</b>	Sales code:	314H5001
		Engineering code:	CUNLE10CN00CE

## Cooling performance - Conf. 1

Power supply	220-240V / 50Hz 1~	Voltage range	198 - 254V / 50Hz
Refr. charge - tech. limit	150g / 5,3oz		
Starter	HST / capillary tube or expansion valve		
Motor configuration	CSIR		
Refrigerant	R290		
Application	LBP+MBP		
Approvals	Eco design (EU) 2015/1095, CE, UK CA, VDE		

<b>ambient temperature</b>	<b>[°C / °F]</b>	<b>25 / 77</b>							(suction gas temperature [°C / °F]: 20 / 68, subcooling: 0K)
evaporating temperature	[°C / °F]	-35 / -31	-30 / -22	-25 / -13	-20 / -4	-10 / 14	0 / 32	10 / 50	
cooling capacity	[W]	287	366	460	567	809	1077	1355	
COP	[W/W]	1,07	1,24	1,42	1,61	1,94	2,18	2,31	
cooling capacity	[Btu/h]	981	1251	1572	1936	2764	3679	4629	
power consumption	[W]	268	296	324	353	418	494	586	
current consumption	[A]	2	2,1	2,2	2,3	2,5	2,8	3,2	

<b>ambient temperature</b>	<b>[°C / °F]</b>	<b>32 / 90</b>							(suction gas temperature [°C / °F]: 20 / 68, subcooling: 0K)
evaporating temperature	[°C / °F]	-35 / -31	-30 / -22	-25 / -13	-20 / -4	-10 / 14	0 / 32	10 / 50	
cooling capacity	[W]	287	356	437	529	739	975	1222	
COP	[W/W]	1,1	1,21	1,33	1,45	1,67	1,83	1,91	
cooling capacity	[Btu/h]	982	1215	1491	1805	2525	3330	4175	
power consumption	[W]	261	294	328	364	443	534	640	
current consumption	[A]	2	2,1	2,2	2,3	2,6	2,9	3,4	

<b>ambient temperature</b>	<b>[°C / °F]</b>	<b>38 / 100</b>							(suction gas temperature [°C / °F]: 20 / 68, subcooling: 0K)
evaporating temperature	[°C / °F]	-35 / -31	-30 / -22	-25 / -13	-20 / -4	-10 / 14	0 / 32	10 / 50	
cooling capacity	[W]	264	326	399	482	673	888	1115	
COP	[W/W]	0,99	1,08	1,18	1,28	1,45	1,57	1,64	
cooling capacity	[Btu/h]	903	1115	1364	1647	2300	3033	3809	
power consumption	[W]	266	301	338	378	465	565	679	
current consumption	[A]	2	2,1	2,2	2,4	2,7	3,1	3,5	

<b>ambient temperature</b>	<b>[°C / °F]</b>	<b>43 / 109</b>							(suction gas temperature [°C / °F]: 20 / 68, subcooling: 0K)
evaporating temperature	[°C / °F]	-35 / -31	-30 / -22	-25 / -13	-20 / -4	-10 / 14	0 / 32		
cooling capacity	[W]	238	296	364	442	620	822		
COP	[W/W]	0,88	0,96	1,05	1,14	1,29	1,41		
cooling capacity	[Btu/h]	811	1011	1244	1509	2118	2807		
power consumption	[W]	272	307	346	388	480	585		
current consumption	[A]	2,1	2,1	2,3	2,4	2,7	3,1		