

Model

Designation

CU NLE12.6CNL R290 230/1/50 CAF



Sales code:

314H5006

Engineering code:

CUNLE126CNLVE

Application Data

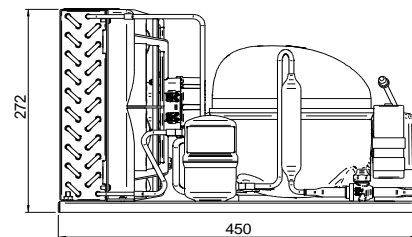
Power supply	220-240V / 50Hz 1~
Refrigerants	R290
Refr. charge - tech. limit	150g / 5,3oz
Starter	HST / capillary tube or expansion valve
Sound pressure (10m)	

Generic data

Voltage range	198 - 254V / 50Hz
Refrigerant	R290
Application	LBP
Rated performance	<u>pe=-25°C, Tsuc=20°C, Tamb=25°C, subcooling: 0K</u>
Cooling capacity	583W / 1990Btu/h
Power consumption	359,7W
Current consumption	2,2A
COP/EER	1,62 / 5,53Btu/Wh
Approvals	Eco design (EU) 2015/1095, CE, UK CA, VDE

Compressor

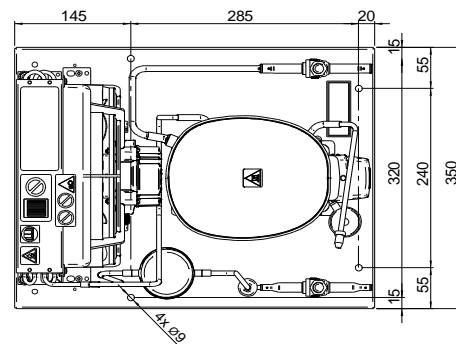
Designation	NLE12.6CNL
Motor configuration	CSIR
Locked rotor amperage	12,5A
Rated load amperage	2,56A
Winding resistance main	5,64Ω
Winding resistance aux	8,49Ω
Oil quantity	300cm ³ / 10,1fl.oz
Oil type	POE
Horsepower rating	3/5 HP



Dimensions

Condensing unit

Height x Width x Depth	297 x 350 x 450 [mm] / 11,7 x 13,8 x 17,7 [in]
Weight	19,2kg / 42,3lbs
Suction adapter	OD ø10mm / 2/5in
Discharge adapter	OD ø6mm / 1/4in
Process connector	ø6,2mm / 0,24in



Package data

Height x Width x Depth	340 x 372 x 570 [mm] / 13,4 x 14,6 x 22,4 [in]
Weight	22,2kg / 48,9lbs

Model

Designation **CU NLE12.6CNL R290 230/1/50 CAF**

Sales code: 314H5006

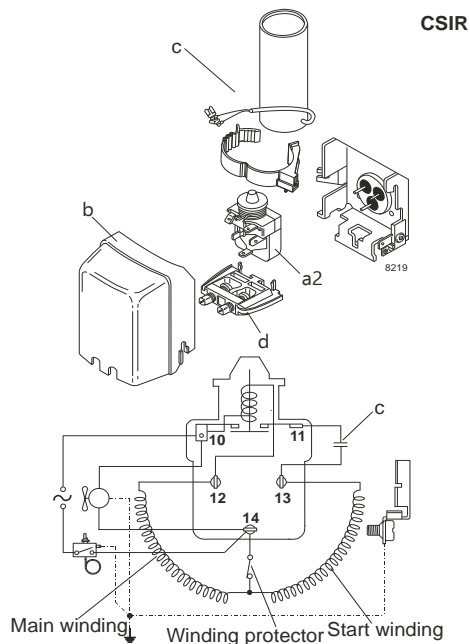
Engineering code: CUNLE126CNLVE

Components Condensing-Unit / Spare Parts

Component	Type	Spare part code number
Compressor code	NLE12.6CNL	105H6378
Condenser	Condenser (4 rows x 10 tubes)	314S0009
Fan motor	30W	314S0016
Blade code	ø230mm 28°	314S0025
Air flow	435,2m³/h	
Receiver code	Receiver 0,32 liter	314S0049
Suction valve code	OD ø10mm / 2/5in	-/-
Liquid valve code	OD ø6mm / 1/4in	-/-

Compressor starting equipment	Spare part code number
pos. a2 - relay	117U7003
pos. c - start capacitor (80µF)	117U5015
pos. b - plastic cover	103N2010
pos. d - cord relief	103N1010

Wiring Sketch Compressor



Model

Designation **CU NLE12.6CNL R290 230/1/50 CAF**

Sales code: 314H5006

Engineering code: CUNLE126CNLVE

Cooling performance - Conf. 1

Power supply 220-240V / 50Hz 1~ Voltage range 198 - 254V / 50Hz

Refr. charge - tech. limit 150g / 5,3oz

Starter HST / capillary tube or expansion valve

Motor configuration CSIR

Refrigerant R290

Application LBP

Approvals Eco design (EU) 2015/1095, CE, UK CA, VDE

ambient temperature	[°C / °F]	25 / 77							(suction gas temperature [°C / °F]: 20 / 68, subcooling: 0K)
evaporating temperature	[°C / °F]	-40 / -40	-35 / -31	-30 / -22	-25 / -13	-20 / -4	-10 / 14	-5 / 23	
cooling capacity	[W]	313	394	483	582	693	950	1095	
COP	[W/W]	1,19	1,34	1,48	1,62	1,75	1,95	2	
cooling capacity	[Btu/h]	1070	1345	1650	1989	2366	3243	3741	
power consumption	[W]	262	294	327	360	396	487	547	
current consumption	[A]	1,9	2	2,1	2,2	2,4	2,7	3	

ambient temperature	[°C / °F]	32 / 90							(suction gas temperature [°C / °F]: 20 / 68, subcooling: 0K)
evaporating temperature	[°C / °F]	-40 / -40	-35 / -31	-30 / -22	-25 / -13	-20 / -4	-10 / 14	-5 / 23	
cooling capacity	[W]	278	352	435	526	628	864	999	
COP	[W/W]	1,07	1,19	1,31	1,42	1,53	1,68	1,72	
cooling capacity	[Btu/h]	948	1204	1485	1797	2144	2951	3411	
power consumption	[W]	260	296	332	370	411	514	581	
current consumption	[A]	1,9	2	2,1	2,3	2,4	2,8	3,1	

ambient temperature	[°C / °F]	38 / 100							(suction gas temperature [°C / °F]: 20 / 68, subcooling: 0K)
evaporating temperature	[°C / °F]	-40 / -40	-35 / -31	-30 / -22	-25 / -13	-20 / -4	-10 / 14	-5 / 23	
cooling capacity	[W]	252	322	398	482	576	794	918	
COP	[W/W]	0,96	1,07	1,17	1,27	1,35	1,48	1,51	
cooling capacity	[Btu/h]	862	1100	1360	1647	1967	2711	3135	
power consumption	[W]	263	301	340	381	427	538	609	
current consumption	[A]	1,9	2	2,2	2,3	2,5	2,9	3,2	

ambient temperature	[°C / °F]	43 / 109							(suction gas temperature [°C / °F]: 20 / 68, subcooling: 0K)
evaporating temperature	[°C / °F]	-40 / -40	-35 / -31	-30 / -22	-25 / -13	-20 / -4	-10 / 14	-5 / 23	
cooling capacity	[W]	233	298	369	447	534	736	852	
COP	[W/W]	0,87	0,97	1,06	1,14	1,22	1,33	1,35	
cooling capacity	[Btu/h]	795	1018	1260	1527	1824	2514	2908	
power consumption	[W]	267	306	347	391	438	555	629	
current consumption	[A]	1,9	2,1	2,2	2,3	2,5	3	3,3	