

Model

Designation **CU NLE12.6MF.2 MG_Y 230/1/50 VA**



Sales code: 314G5011
Engineering code: CUNLE126MF2VE

Application Data

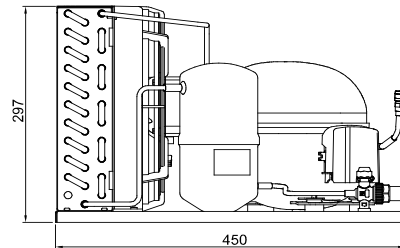
| | |
|----------------------------|---|
| Power supply | 220-240V / 50Hz 1~ |
| Refrigerants | R134a-R513A |
| Refr. charge - tech. limit | 600g / 21,2oz |
| Starter | HST / capillary tube or expansion valve |
| Sound pressure (10m) | 36,1dB(A) |

Configuration data

| | Conf. 1 | Conf. 2 |
|---------------------|---|--|
| Voltage range | 198 - 254V / 50Hz | 198 - 254V / 50Hz |
| Refrigerant | R134a | R513A |
| Application | LBP+MBP | LBP+MBP |
| Rated performance | <u>pe=-10°C, Tsuc=20°C, Tamb=25°C, subccoling: 2K</u> | |
| Cooling capacity | 754W / 2576Btu/h | 790W / 2696Btu/h |
| Power consumption | 342,6W | 361,7W |
| Current consumption | 2,4A | 2,5A |
| COP/EER | 2,2 / 7,52Btu/Wh | 2,18 / 7,45Btu/Wh |
| Approvals | Eco design (EU) 2015/1095, CE, UK CA, VDE | Eco design (EU) 2015/1095, CE, UK CA, VDE |

Compressor

| | |
|-------------------------|--------------------------------|
| Designation | NLE12.6MF.2 |
| Motor configuration | CSIR |
| Locked rotor amperage | 13,65A |
| Rated load amperage | 2,8A |
| Winding resistance main | 4,94Ω |
| Winding resistance aux | 8,89Ω |
| Oil quantity | 300cm ³ / 10,1fl.oz |
| Oil type | POE |
| Horsepower rating | 1/3 HP |



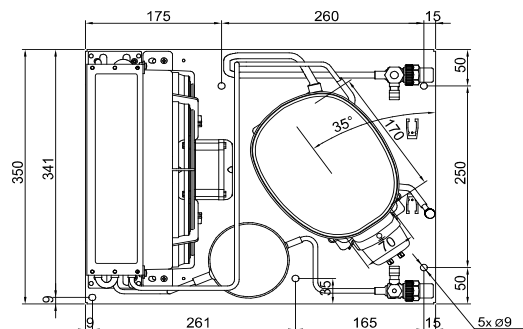
Dimensions

Condensing unit

| | |
|------------------------|--|
| Height x Width x Depth | 297 x 350 x 450 [mm] / 11,7 x 13,8 x 17,7 [in] |
| Weight | 19,6kg / 43,2lbs |
| Suction adapter | FLARE 1/4" |
| Discharge adapter | FLARE 1/4" |
| Process connector | ø6,2mm / 0,24in |

Package data

| | |
|------------------------|--|
| Height x Width x Depth | 350 x 450 x 550 [mm] / 13,8 x 17,7 x 21,7 [in] |
| Weight | 22,6kg / 49,8lbs |



Model

Designation **CU NLE12.6MF.2 MG_Y 230/1/50 VA**

Sales code: 314G5011
Engineering code: CUNLE126MF2VE

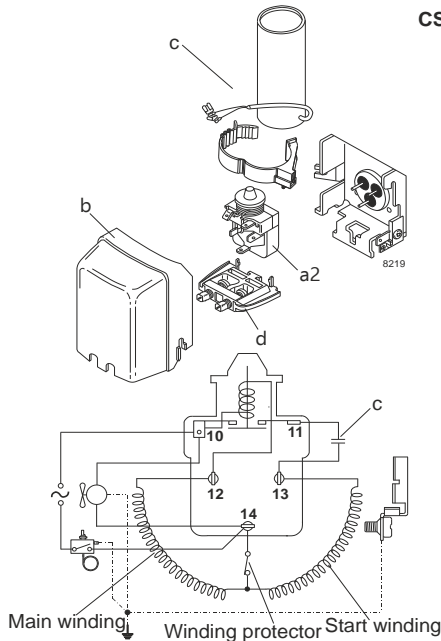
Components Condensing-Unit / Spare Parts

| Component | Type | Spare part code number |
|--------------------|-------------------------------|------------------------|
| Compressor code | NLE12.6MF.2 | 105G6389 |
| Condenser | Condenser (3 rows x 11 tubes) | 1130270F70 |
| Fan motor | 16W | NET3T16PVN018 |
| Blade code | ø254mm 22° | A254-22 |
| Air flow | 631,8m³/h | |
| Receiver code | Receiver 1,3 liter | 100/200VS00 |
| Suction valve code | FLARE 1/4" | FLARE 1/4" |
| Liquid valve code | FLARE 1/4" | FLARE 1/4" |

| Compressor starting equipment | Spare part code number |
|---------------------------------|------------------------|
| pos. a2 - relay | 117U6005 |
| pos. c - start capacitor (80µF) | 117U5015 |
| pos. b - plastic cover | 103N2010 |
| pos. d - cord relief | 103N1010 |

Wiring Sketch Compressor

Wiring Sketch Condensing Unit



Model

Designation **CU NLE12.6MF.2 MG_Y 230/1/50 VA**

Sales code: 314G5011

Engineering code: CUNLE126MF2VE

Cooling performance - Conf. 1

| | | | |
|----------------------------|---|---------------|-------------------|
| Power supply | 220-240V / 50Hz 1~ | Voltage range | 198 - 254V / 50Hz |
| Refr. charge - tech. limit | 600g / 21,2oz | | |
| Starter | HST / capillary tube or expansion valve | | |
| Motor configuration | CSIR | | |
| Refrigerant | R134a | | |
| Application | LBP+MBP | | |
| Approvals | Eco design (EU) 2015/1095, CE, UK CA, VDE | | |

| ambient temperature | [°C / °F] | 25 / 77 (suction gas temperature [°C / °F]: 20 / 68, subcooling: 2K) | | | | | | |
|-------------------------|-----------|--|-----------|-----------|----------|----------|--------|---------|
| evaporating temperature | [°C / °F] | -35 / -31 | -30 / -22 | -25 / -13 | -20 / -4 | -10 / 14 | 0 / 32 | 10 / 50 |
| cooling capacity | [W] | 211 | 284 | 376 | 486 | 754 | 1078 | 1448 |
| COP | [W/W] | 1,09 | 1,3 | 1,52 | 1,75 | 2,2 | 2,57 | 2,81 |
| cooling capacity | [Btu/h] | 721 | 971 | 1286 | 1661 | 2575 | 3680 | 4945 |
| power consumption | [W] | 193 | 219 | 247 | 277 | 343 | 420 | 515 |
| current consumption | [A] | 2 | 2,1 | 2,1 | 2,2 | 2,4 | 2,6 | 3 |

| ambient temperature | [°C / °F] | 32 / 90 (suction gas temperature [°C / °F]: 20 / 68, subcooling: 2K) | | | | | | |
|-------------------------|-----------|--|-----------|-----------|----------|----------|--------|---------|
| evaporating temperature | [°C / °F] | -35 / -31 | -30 / -22 | -25 / -13 | -20 / -4 | -10 / 14 | 0 / 32 | 10 / 50 |
| cooling capacity | [W] | 204 | 262 | 340 | 436 | 679 | 979 | 1328 |
| COP | [W/W] | 1,08 | 1,23 | 1,41 | 1,6 | 1,97 | 2,26 | 2,44 |
| cooling capacity | [Btu/h] | 697 | 895 | 1162 | 1491 | 2318 | 3343 | 4534 |
| power consumption | [W] | 189 | 213 | 241 | 272 | 345 | 434 | 545 |
| current consumption | [A] | 2 | 2,1 | 2,1 | 2,2 | 2,4 | 2,7 | 3,1 |

| ambient temperature | [°C / °F] | 38 / 100 (suction gas temperature [°C / °F]: 20 / 68, subcooling: 2K) | | | | | | |
|-------------------------|-----------|---|-----------|-----------|----------|----------|--------|---------|
| evaporating temperature | [°C / °F] | -35 / -31 | -30 / -22 | -25 / -13 | -20 / -4 | -10 / 14 | 0 / 32 | 10 / 50 |
| cooling capacity | [W] | 196 | 242 | 308 | 393 | 615 | 896 | 1228 |
| COP | [W/W] | 1,03 | 1,13 | 1,27 | 1,43 | 1,75 | 1,99 | 2,14 |
| cooling capacity | [Btu/h] | 671 | 826 | 1052 | 1343 | 2099 | 3060 | 4193 |
| power consumption | [W] | 191 | 214 | 242 | 274 | 352 | 450 | 574 |
| current consumption | [A] | 2 | 2,1 | 2,1 | 2,2 | 2,4 | 2,7 | 3,2 |

| ambient temperature | [°C / °F] | 43 / 109 (suction gas temperature [°C / °F]: 20 / 68, subcooling: 2K) | | | | | | |
|-------------------------|-----------|---|-----------|-----------|----------|----------|--------|---------|
| evaporating temperature | [°C / °F] | -35 / -31 | -30 / -22 | -25 / -13 | -20 / -4 | -10 / 14 | 0 / 32 | 10 / 50 |
| cooling capacity | [W] | 192 | 227 | 283 | 359 | 564 | 831 | 1149 |
| COP | [W/W] | 0,99 | 1,05 | 1,16 | 1,3 | 1,57 | 1,79 | 1,92 |
| cooling capacity | [Btu/h] | 657 | 775 | 967 | 1226 | 1926 | 2837 | 3925 |
| power consumption | [W] | 194 | 216 | 244 | 277 | 359 | 464 | 597 |
| current consumption | [A] | 2,1 | 2,1 | 2,1 | 2,2 | 2,4 | 2,8 | 3,3 |

Model

Designation **CU NLE12.6MF.2 MG_Y 230/1/50 VA**

Sales code: 314G5011

Engineering code: CUNLE126MF2VE

Cooling performance - Conf. 2

| | | | |
|----------------------------|---|---------------|-------------------|
| Power supply | 220-240V / 50Hz 1~ | Voltage range | 198 - 254V / 50Hz |
| Refr. charge - tech. limit | 600g / 21,2oz | | |
| Starter | HST / capillary tube or expansion valve | | |
| Motor configuration | CSIR | | |
| Refrigerant | R513A | | |
| Application | LBP+MBP | | |
| Approvals | Eco design (EU) 2015/1095, CE, UK CA, VDE | | |

| ambient temperature | [°C / °F] | 25 / 77 (suction gas temperature [°C / °F]: 20 / 68, subcooling: 2K) | | | | | | |
|-------------------------|-----------|--|-----------|-----------|----------|----------|--------|---------|
| evaporating temperature | [°C / °F] | -35 / -31 | -30 / -22 | -25 / -13 | -20 / -4 | -10 / 14 | 0 / 32 | 10 / 50 |
| cooling capacity | [W] | 238 | 313 | 408 | 520 | 789 | 1108 | 1463 |
| COP | [W/W] | 1,16 | 1,34 | 1,56 | 1,77 | 2,18 | 2,51 | 2,72 |
| cooling capacity | [Btu/h] | 813 | 1069 | 1393 | 1776 | 2696 | 3783 | 4995 |
| power consumption | [W] | 206 | 233 | 262 | 293 | 362 | 442 | 538 |
| current consumption | [A] | 2,1 | 2,1 | 2,2 | 2,3 | 2,5 | 2,7 | 3 |

| ambient temperature | [°C / °F] | 32 / 90 (suction gas temperature [°C / °F]: 20 / 68, subcooling: 2K) | | | | | | |
|-------------------------|-----------|--|-----------|-----------|----------|----------|--------|---------|
| evaporating temperature | [°C / °F] | -35 / -31 | -30 / -22 | -25 / -13 | -20 / -4 | -10 / 14 | 0 / 32 | 10 / 50 |
| cooling capacity | [W] | 230 | 288 | 367 | 464 | 705 | 998 | 1329 |
| COP | [W/W] | 1,13 | 1,26 | 1,43 | 1,61 | 1,93 | 2,19 | 2,33 |
| cooling capacity | [Btu/h] | 787 | 984 | 1252 | 1585 | 2409 | 3409 | 4540 |
| power consumption | [W] | 204 | 228 | 257 | 289 | 365 | 456 | 570 |
| current consumption | [A] | 2 | 2,1 | 2,2 | 2,3 | 2,5 | 2,8 | 3,1 |

| ambient temperature | [°C / °F] | 38 / 100 (suction gas temperature [°C / °F]: 20 / 68, subcooling: 2K) | | | | | | |
|-------------------------|-----------|---|-----------|-----------|----------|----------|--------|---------|
| evaporating temperature | [°C / °F] | -35 / -31 | -30 / -22 | -25 / -13 | -20 / -4 | -10 / 14 | 0 / 32 | 10 / 50 |
| cooling capacity | [W] | 224 | 266 | 331 | 416 | 634 | 906 | 1218 |
| COP | [W/W] | 1,07 | 1,15 | 1,28 | 1,42 | 1,7 | 1,92 | 2,03 |
| cooling capacity | [Btu/h] | 764 | 910 | 1132 | 1420 | 2165 | 3093 | 4159 |
| power consumption | [W] | 209 | 231 | 259 | 292 | 372 | 473 | 599 |
| current consumption | [A] | 2,1 | 2,1 | 2,2 | 2,3 | 2,5 | 2,8 | 3,2 |

| ambient temperature | [°C / °F] | 43 / 109 (suction gas temperature [°C / °F]: 20 / 68, subcooling: 2K) | | | | | | |
|-------------------------|-----------|---|-----------|-----------|----------|----------|--------|---------|
| evaporating temperature | [°C / °F] | -35 / -31 | -30 / -22 | -25 / -13 | -20 / -4 | -10 / 14 | 0 / 32 | 10 / 50 |
| cooling capacity | [W] | 222 | 251 | 305 | 378 | 577 | 832 | 1129 |
| COP | [W/W] | 1,04 | 1,07 | 1,16 | 1,28 | 1,52 | 1,7 | 1,81 |
| cooling capacity | [Btu/h] | 757 | 859 | 1040 | 1291 | 1972 | 2843 | 3856 |
| power consumption | [W] | 214 | 235 | 263 | 296 | 380 | 488 | 624 |
| current consumption | [A] | 2,1 | 2,1 | 2,2 | 2,3 | 2,5 | 2,8 | 3,2 |