

Model

Designation **CU NLE8.8CN R290 230/1/50 CAP**



Sales code: 314H5000

Engineering code: CUNLE88CN0CE

Application Data

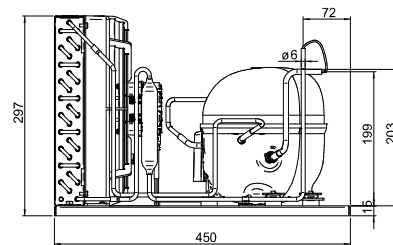
Power supply	220-240V / 50Hz 1~
Refrigerants	R290
Refr. charge - tech. limit	150g / 5,3oz
Starter	HST / capillary tube or expansion valve
Sound pressure (10m)	27,1dB(A)

Generic data

Voltage range	198 - 254V / 50Hz
Refrigerant	R290
Application	LBP+MBP
Rated performance	<u>pe=-10°C, Tsuc=20°C, Tamb=25°C, subccoling: 0K</u>
Cooling capacity	714W / 2438Btu/h
Power consumption	335,3W
Current consumption	2A
COP/EER	2,13 / 7,27Btu/Wh
Approvals	Eco design (EU) 2015/1095, CE, UK CA, VDE

Compressor

Designation	NLE8.8CN
Motor configuration	CSIR
Locked rotor amperage	11,3A
Rated load amperage	2,15A
Winding resistance main	9,28Ω
Winding resistance aux	11,64Ω
Oil quantity	270cm ³ / 9,1fl.oz
Oil type	POE
Horsepower rating	3/8 HP



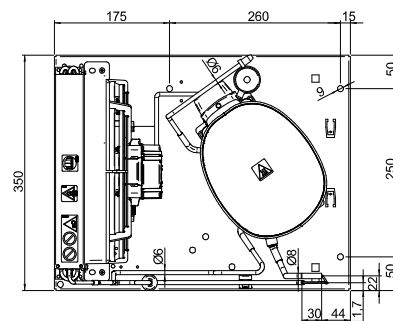
Dimensions

Condensing unit

Height x Width x Depth	297 x 350 x 450 [mm] / 11,7 x 13,8 x 17,7 [in]
Weight	17,9kg / 39,4lbs
Suction adapter	OD ø8mm / 1/3in
Discharge adapter	OD ø6mm / 1/4in
Process connector	ø6,2mm / 0,24in

Package data

Height x Width x Depth	340 x 372 x 570 [mm] / 13,4 x 14,6 x 22,4 [in]
Weight	20,9kg / 46lbs



Model

Designation **CU NLE8.8CN R290 230/1/50 CAP**

Sales code: 314H5000

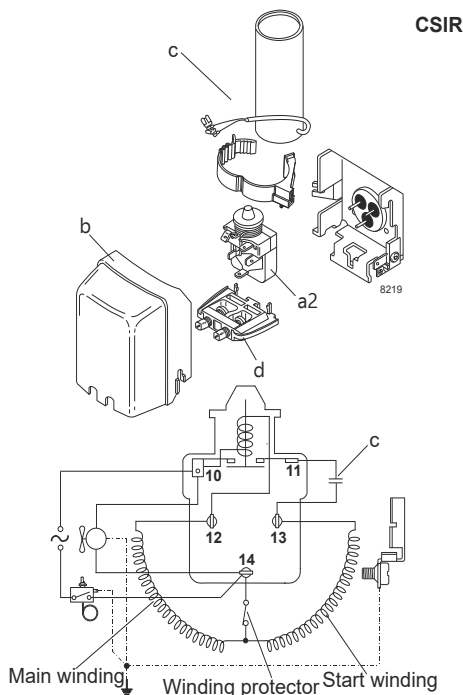
Engineering code: CUNLE88CN0CE

Components Condensing-Unit / Spare Parts

Component	Type	Spare part code number
Compressor code	NLE8.8CN	105H6880
Condenser	Condenser (3 rows x 11 tubes)	314S0010
Fan motor	30W	314S0016
Blade code	ø254mm 22°	314S0026
Air flow	551,4m³/h	
Receiver code	not installed	-/-
Suction valve code	OD ø8mm / 1/3in	-/-
Liquid valve code	OD ø6mm / 1/4in	-/-

Compressor starting equipment	Spare part code number
pos. a2 - relay	117U7002
pos. c - start capacitor (80µF)	117U5015
pos. b - plastic cover	103N0491
pos. d - cord relief	103N1010

Wiring Sketch Compressor



Model

Designation	CU NLE8.8CN R290 230/1/50 CAP	Sales code:	314H5000
		Engineering code:	CUNLE88CN0CE

Cooling performance - Conf. 1

Power supply	220-240V / 50Hz 1~	Voltage range	198 - 254V / 50Hz
Refr. charge - tech. limit	150g / 5,3oz		
Starter	HST / capillary tube or expansion valve		
Motor configuration	CSIR		
Refrigerant	R290		
Application	LBP+MBP		
Approvals	Eco design (EU) 2015/1095, CE, UK CA, VDE		

ambient temperature	°C / °F	25 / 77							(suction gas temperature [°C / °F]: 20 / 68, subcooling: 0K)
evaporating temperature	[°C / °F]	-35 / -31	-30 / -22	-25 / -13	-20 / -4	-10 / 14	0 / 32	10 / 50	
cooling capacity	[W]	248	316	398	492	714	972	1254	
COP	[W/W]	1,15	1,33	1,52	1,73	2,13	2,49	2,76	
cooling capacity	[Btu/h]	848	1080	1359	1680	2438	3319	4284	
power consumption	[W]	216	238	261	285	335	391	454	
current consumption	[A]	1,6	1,7	1,8	1,8	2	2,2	2,5	

ambient temperature	°C / °F	32 / 90							(suction gas temperature [°C / °F]: 20 / 68, subcooling: 0K)
evaporating temperature	[°C / °F]	-35 / -31	-30 / -22	-25 / -13	-20 / -4	-10 / 14	0 / 32	10 / 50	
cooling capacity	[W]	258	318	388	469	661	885	1134	
COP	[W/W]	1,12	1,26	1,4	1,54	1,84	2,08	2,26	
cooling capacity	[Btu/h]	882	1086	1326	1602	2257	3024	3872	
power consumption	[W]	231	253	278	304	360	425	502	
current consumption	[A]	1,7	1,8	1,8	1,9	2,1	2,4	2,7	

ambient temperature	°C / °F	38 / 100							(suction gas temperature [°C / °F]: 20 / 68, subcooling: 0K)
evaporating temperature	[°C / °F]	-35 / -31	-30 / -22	-25 / -13	-20 / -4	-10 / 14	0 / 32	10 / 50	
cooling capacity	[W]	243	298	362	435	607	808	1031	
COP	[W/W]	1,03	1,15	1,26	1,38	1,6	1,78	1,89	
cooling capacity	[Btu/h]	830	1019	1237	1487	2073	2760	3520	
power consumption	[W]	236	260	287	316	380	455	545	
current consumption	[A]	1,7	1,8	1,9	2	2,2	2,5	2,9	

ambient temperature	°C / °F	43 / 109							(suction gas temperature [°C / °F]: 20 / 68, subcooling: 0K)
evaporating temperature	[°C / °F]	-35 / -31	-30 / -22	-25 / -13	-20 / -4	-10 / 14	0 / 32	10 / 50	
cooling capacity	[W]	220	273	334	402	560	744	947	
COP	[W/W]	0,93	1,04	1,14	1,24	1,41	1,55	1,62	
cooling capacity	[Btu/h]	752	934	1140	1372	1911	2540	3235	
power consumption	[W]	236	263	292	324	396	481	583	
current consumption	[A]	1,7	1,8	1,9	2	2,2	2,6	3	