

## Model

Designation **CU NLE8.8CN R290 230/1/50 CAP**



Sales code: 314H5004

Engineering code: CUNLE88CN0VE

## Application Data

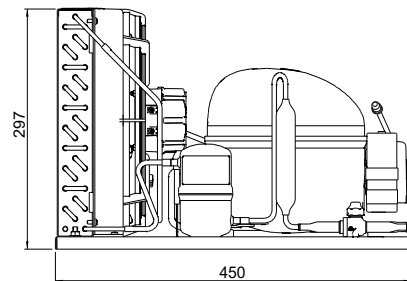
Power supply 220-240V / 50Hz 1~  
 Refrigerants R290  
 Refr. charge - tech. limit 150g / 5,3oz  
 Starter HST / capillary tube or expansion valve  
 Sound pressure (10m)

## Generic data

Voltage range 198 - 254V / 50Hz  
 Refrigerant R290  
 Application LBP+MBP  
  
 Rated performance pe=-10°C, Tsuc=20°C, Tamb=25°C, subccoling: 0K  
 Cooling capacity 714W / 2438Btu/h  
 Power consumption 335,3W  
 Current consumption 2A  
 COP/EER 2,13 / 7,27Btu/Wh  
  
 Approvals Eco design (EU) 2015/1095,  
 CE, UK CA, VDE

## Compressor

Designation **NLE8.8CN**  
 Motor configuration CSIR  
 Locked rotor amperage 11,3A  
 Rated load amperage 2,15A  
 Winding resistance main 9,28Ω  
 Winding resistance aux 11,64Ω  
 Oil quantity 270cm<sup>3</sup> / 9,1fl.oz  
 Oil type POE  
 Horsepower rating 3/8 HP



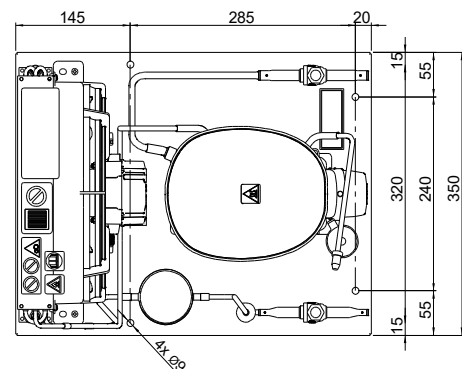
## Dimensions

### Condensing unit

Height x Width x Depth 297 x 350 x 450 [mm] / 11,7 x 13,8 x 17,7 [in]  
 Weight 18kg / 39,7lbs  
 Suction adapter OD ø10mm / 2/5in  
 Discharge adapter OD ø6mm / 1/4in  
 Process connector ø6,2mm / 0,24in

### Package data

Height x Width x Depth 340 x 372 x 570 [mm] / 13,4 x 14,6 x 22,4 [in]  
 Weight 21kg / 46,3lbs



## Model

Designation **CU NLE8.8CN R290 230/1/50 CAP**

Sales code: 314H5004

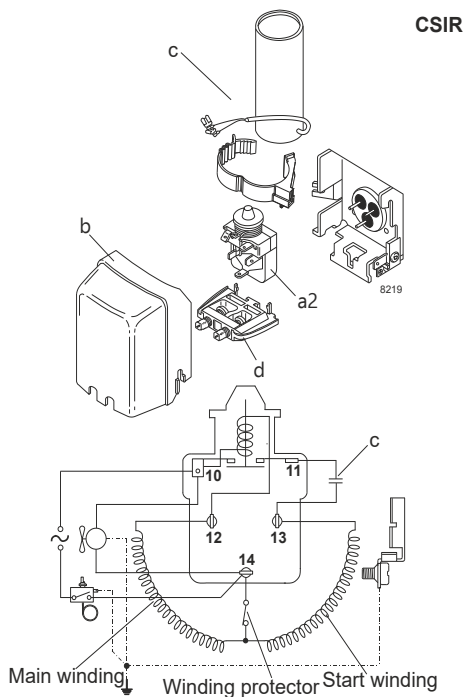
Engineering code: CUNLE88CN0VE

## Components Condensing-Unit / Spare Parts

Component	Type	Spare part code number
Compressor code	NLE8.8CN	105H6880
Condenser	Condenser (3 rows x 11 tubes)	314S0010
Fan motor	30W	314S0016
Blade code	ø254mm 22°	314S0026
Air flow	551,4m³/h	
Receiver code	Receiver 0,32 liter	314S0049
Suction valve code	OD ø10mm / 2/5in	-/-
Liquid valve code	OD ø6mm / 1/4in	-/-

Compressor starting equipment	Spare part code number
pos. a2 - relay	117U7002
pos. c - start capacitor (80µF)	117U5015
pos. b - plastic cover	103N2010
pos. d - cord relief	103N1010

## Wiring Sketch Compressor



## Model

Designation	<b>CU NLE8.8CN R290 230/1/50 CAP</b>	Sales code:	314H5004
		Engineering code:	CUNLE88CN0VE

### Cooling performance - Conf. 1

Power supply	220-240V / 50Hz 1~	Voltage range	198 - 254V / 50Hz
Refr. charge - tech. limit	150g / 5,3oz		
Starter	HST / capillary tube or expansion valve		
Motor configuration	CSIR		
Refrigerant	R290		
Application	LBP+MBP		
Approvals	Eco design (EU) 2015/1095, CE, UK CA, VDE		

ambient temperature	°C / °F	25 / 77							(suction gas temperature [°C / °F]: 20 / 68, subcooling: 0K)
evaporating temperature	[°C / °F]	-35 / -31	-30 / -22	-25 / -13	-20 / -4	-10 / 14	0 / 32	10 / 50	
cooling capacity	[W]	248	316	398	492	714	972	1254	
COP	[W/W]	1,15	1,33	1,52	1,73	2,13	2,49	2,76	
cooling capacity	[Btu/h]	848	1080	1359	1680	2438	3319	4284	
power consumption	[W]	216	238	261	285	335	391	454	
current consumption	[A]	1,6	1,7	1,8	1,8	2	2,2	2,5	

ambient temperature	°C / °F	32 / 90							(suction gas temperature [°C / °F]: 20 / 68, subcooling: 0K)
evaporating temperature	[°C / °F]	-35 / -31	-30 / -22	-25 / -13	-20 / -4	-10 / 14	0 / 32	10 / 50	
cooling capacity	[W]	258	318	388	469	661	885	1134	
COP	[W/W]	1,12	1,26	1,4	1,54	1,84	2,08	2,26	
cooling capacity	[Btu/h]	882	1086	1326	1602	2257	3024	3872	
power consumption	[W]	231	253	278	304	360	425	502	
current consumption	[A]	1,7	1,8	1,8	1,9	2,1	2,4	2,7	

ambient temperature	°C / °F	38 / 100							(suction gas temperature [°C / °F]: 20 / 68, subcooling: 0K)
evaporating temperature	[°C / °F]	-35 / -31	-30 / -22	-25 / -13	-20 / -4	-10 / 14	0 / 32	10 / 50	
cooling capacity	[W]	243	298	362	435	607	808	1031	
COP	[W/W]	1,03	1,15	1,26	1,38	1,6	1,78	1,89	
cooling capacity	[Btu/h]	830	1019	1237	1487	2073	2760	3520	
power consumption	[W]	236	260	287	316	380	455	545	
current consumption	[A]	1,7	1,8	1,9	2	2,2	2,5	2,9	

ambient temperature	°C / °F	43 / 109							(suction gas temperature [°C / °F]: 20 / 68, subcooling: 0K)
evaporating temperature	[°C / °F]	-35 / -31	-30 / -22	-25 / -13	-20 / -4	-10 / 14	0 / 32	10 / 50	
cooling capacity	[W]	220	273	334	402	560	744	947	
COP	[W/W]	0,93	1,04	1,14	1,24	1,41	1,55	1,62	
cooling capacity	[Btu/h]	752	934	1140	1372	1911	2540	3235	
power consumption	[W]	236	263	292	324	396	481	583	
current consumption	[A]	1,7	1,8	1,9	2	2,2	2,6	3	