

Model

Designation	CU SCE15MNX R290 230/1/50 CAP	Sales code:	314H4003
		Engineering code:	CUSCE15MNX0CE



Application Data

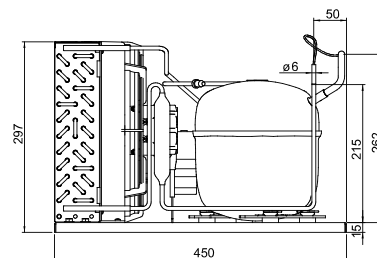
Power supply	220-240V / 50Hz 1~
Refrigerants	R290
Refr. charge - tech. limit	550g / 19,4oz
Starter	HST / capillary tube or expansion valve
Sound pressure (10m)	33dB(A)

Generic data

Voltage range	198 - 254V / 50Hz
Refrigerant	R290
Application	MBP
Rated performance	<u>pe=-10°C, Tsuc=20°C, Tamb=25°C, subccoling: 2K</u>
Cooling capacity	1204W / 4112Btu/h
Power consumption	538,3W
Current consumption	3,1A
COP/EER	2,24 / 7,64Btu/Wh
Approvals	Eco design (EU) 2015/1095, CE, UK CA, VDE

Compressor

Designation	SCE15MNX
Motor configuration	CSIR
Locked rotor amperage	17,47A
Rated load amperage	2,92A
Winding resistance main	4,07Ω
Winding resistance aux	15,88Ω
Oil quantity	550cm ³ / 18,6fl.oz
Oil type	POE
Horsepower rating	3/5 HP



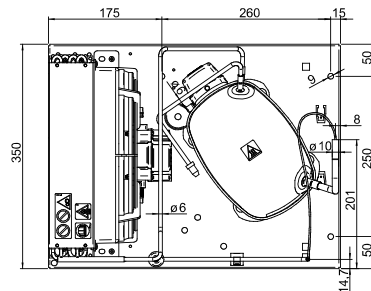
Dimensions

Condensing unit

Height x Width x Depth	297 x 350 x 450 [mm] / 11,7 x 13,8 x 17,7 [in]
Weight	21kg / 46,3lbs
Suction adapter	OD ø10mm / 2/5in
Discharge adapter	OD ø6mm / 1/4in
Process connector	ø6,2mm / 0,24in

Package data

Height x Width x Depth	340 x 372 x 570 [mm] / 13,4 x 14,6 x 22,4 [in]
Weight	24kg / 52,9lbs



Model

Designation **CU SCE15MNX R290 230/1/50 CAP**

Sales code: 314H4003
Engineering code: CUSCE15MNX0CE

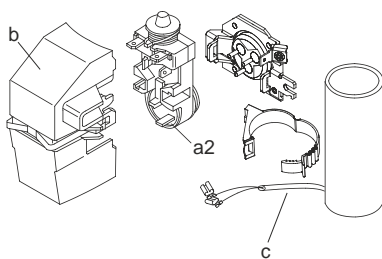
Components Condensing-Unit / Spare Parts

Component	Type	Spare part code number
Compressor code	SCE15MNX	104H8549
Condenser	Condenser (5 rows x 11 tubes)	1150270FI0
Fan motor		62010155
Blade code	ø254mm 28°	A254-28
Air flow	580,5m³/h	
Receiver code	not installed	-/-
Suction valve code	OD ø10mm / 2/5in	-/-
Liquid valve code	OD ø6mm / 1/4in	-/-

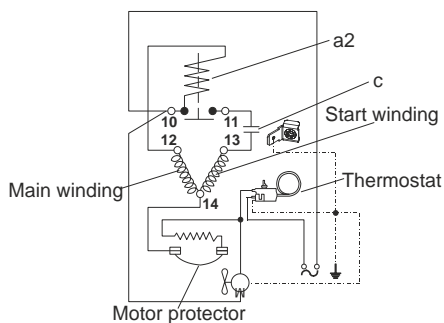
Compressor starting equipment	Spare part code number
pos. a2 - assy. relay + ext. protecto	117U7405
pos. c - start capacitor (80µF)	117U5017
pos. d - cord relief	103N1004
pos. b - plastic cover + clamp	117U1033

Wiring Sketch Compressor

CSIR



8883



Model

Designation **CU SCE15MNX R290 230/1/50 CAP**

Sales code: 314H4003

Engineering code: CUSCE15MNX0CE

Cooling performance - Conf. 1

Power supply	220-240V / 50Hz 1~	Voltage range	198 - 254V / 50Hz					
Refr. charge - tech. limit	550g / 19,4oz							
Starter	HST / capillary tube or expansion valve							
Motor configuration	CSIR							
Refrigerant	R290							
Application	MBP							
Approvals	Eco design (EU) 2015/1095, CE, UK CA, VDE							

ambient temperature	[°C / °F]	25 / 77							(suction gas temperature [°C / °F]: 20 / 68, subcooling: 2K)
evaporating temperature	[°C / °F]	-25 / -13	-20 / -4	-15 / 5	-10 / 14	0 / 32	5 / 41	10 / 50	
cooling capacity	[W]	671	831	1009	1204	1629	1853	2080	
COP	[W/W]	1,67	1,86	2,05	2,24	2,56	2,7	2,83	
cooling capacity	[Btu/h]	2292	2836	3446	4112	5565	6329	7104	
power consumption	[W]	402	446	491	538	636	686	735	
current consumption	[A]	2,6	2,8	3	3,1	3,5	3,6	3,9	

ambient temperature	[°C / °F]	32 / 90							(suction gas temperature [°C / °F]: 20 / 68, subcooling: 2K)
evaporating temperature	[°C / °F]	-25 / -13	-20 / -4	-15 / 5	-10 / 14	0 / 32	5 / 41	10 / 50	
cooling capacity	[W]	610	758	922	1100	1486	1687	1890	
COP	[W/W]	1,46	1,62	1,78	1,92	2,17	2,28	2,37	
cooling capacity	[Btu/h]	2082	2587	3149	3757	5074	5760	6454	
power consumption	[W]	418	467	518	572	684	741	799	
current consumption	[A]	2,7	2,9	3,1	3,2	3,6	3,9	4,2	

ambient temperature	[°C / °F]	38 / 100							(suction gas temperature [°C / °F]: 20 / 68, subcooling: 2K)
evaporating temperature	[°C / °F]	-25 / -13	-20 / -4	-15 / 5	-10 / 14	0 / 32	5 / 41	10 / 50	
cooling capacity	[W]	557	694	846	1009	1360	1541	1725	
COP	[W/W]	1,3	1,44	1,57	1,69	1,89	1,96	2,03	
cooling capacity	[Btu/h]	1901	2370	2888	3447	4645	5264	5890	
power consumption	[W]	429	482	539	597	721	785	849	
current consumption	[A]	2,7	2,9	3,1	3,3	3,8	4,1	4,5	

ambient temperature	[°C / °F]	43 / 109							(suction gas temperature [°C / °F]: 20 / 68, subcooling: 2K)
evaporating temperature	[°C / °F]	-25 / -13	-20 / -4	-15 / 5	-10 / 14	0 / 32	5 / 41		
cooling capacity	[W]	511	639	780	931	1253	1418		
COP	[W/W]	1,17	1,3	1,41	1,51	1,67	1,73		
cooling capacity	[Btu/h]	1744	2183	2665	3180	4278	4843		
power consumption	[W]	436	493	553	616	750	819		
current consumption	[A]	2,7	2,9	3,1	3,4	4	4,4		