

## Model

Designation **CU SCE15MNX R290 230/1/50 CAP**



Sales code: 314H4007

Engineering code: CUSCE15MNX0VE

## Application Data

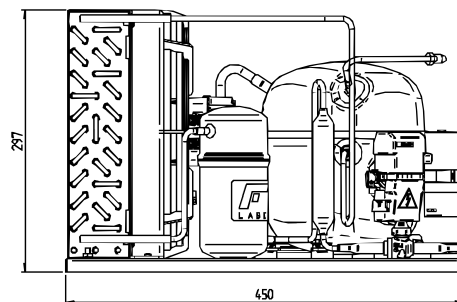
Power supply	220-240V / 50Hz 1~
Refrigerants	R290
Refr. charge - tech. limit	550g / 19,4oz
Starter	HST / capillary tube or expansion valve
Sound pressure (10m)	33dB(A)

## Generic data

Voltage range	198 - 254V / 50Hz
Refrigerant	R290
Application	MBP
Rated performance	<u>pe=-10°C, Tsuc=20°C, Tamb=25°C, subccoling: 0K</u>
Cooling capacity	1204W / 4111Btu/h
Power consumption	546,1W
Current consumption	3,2A
COP/EER	2,2 / 7,53Btu/Wh
Approvals	Eco design (EU) 2015/1095, CE, UK CA, VDE

## Compressor

Designation	<b>SCE15MNX</b>
Motor configuration	CSIR
Locked rotor amperage	17,47A
Rated load amperage	2,92A
Winding resistance main	4,07Ω
Winding resistance aux	15,88Ω
Oil quantity	550cm <sup>3</sup> / 18,6fl.oz
Oil type	POE
Horsepower rating	3/5 HP



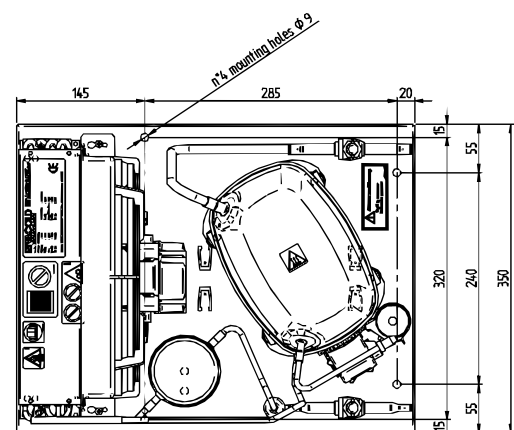
## Dimensions

### Condensing unit

Height x Width x Depth	297 x 350 x 450 [mm] / 11,7 x 13,8 x 17,7 [in]
Weight	24kg / 52,9lbs
Suction adapter	OD ø10mm / 2/5in
Discharge adapter	OD ø6mm / 1/4in
Process connector	ø6,2mm / 0,24in

### Package data

Height x Width x Depth	340 x 372 x 570 [mm] / 13,4 x 14,6 x 22,4 [in]
Weight	27kg / 59,5lbs



## Model

Designation **CU SCE15MNX R290 230/1/50 CAP**

Sales code: 314H4007

Engineering code: CUSCE15MNX0VE

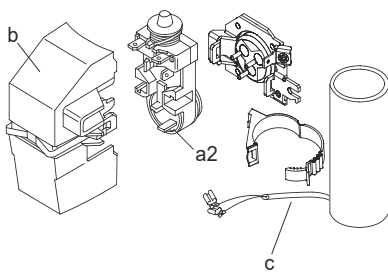
## Components Condensing-Unit / Spare Parts

Component	Type	Spare part code number
Compressor code	SCE15MNX	104H8549
Condenser	Condenser (5 rows x 11 tubes)	314S0011
Fan motor	30W	314S0017
Blade code	ø254mm 28°	314S0027
Air flow	576,9m³/h	
Receiver code	Receiver 0,66 liter	314S0050
Suction valve code	OD ø10mm / 2/5in	-/-
Liquid valve code	OD ø6mm / 1/4in	-/-

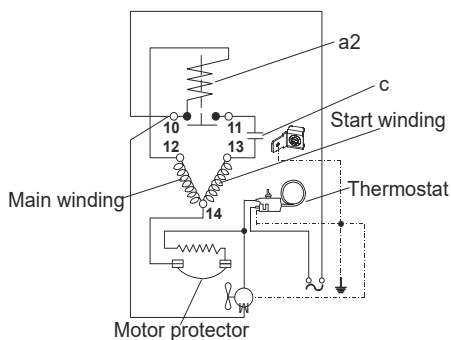
Compressor starting equipment	Spare part code number
pos. a2 - assy. relay + ext. protector	117U7405
pos. c - start capacitor (80µF)	117U5017
pos. d - cord relief	103N1004
pos. b - plastic cover + clamp	117U1033

## Wiring Sketch Compressor

CSIR



8893



## Model

Designation **CU SCE15MNX R290 230/1/50 CAP**

Sales code: 314H4007

Engineering code: CUSCE15MNX0VE

## Cooling performance - Conf. 1

Power supply	220-240V / 50Hz 1~	Voltage range	198 - 254V / 50Hz
Refr. charge - tech. limit	550g / 19,4oz		
Starter	HST / capillary tube or expansion valve		
Motor configuration	CSIR		
Refrigerant	R290		
Application	MBP		
Approvals	Eco design (EU) 2015/1095, CE, UK CA, VDE		

ambient temperature	[°C / °F]	25 / 77							(suction gas temperature [°C / °F]: 20 / 68, subcooling: 0K)
evaporating temperature	[°C / °F]	-25 / -13	-20 / -4	-15 / 5	-10 / 14	0 / 32	5 / 41	10 / 50	
cooling capacity	[W]	672	831	1009	1204	1630	1854	2082	
COP	[W/W]	1,62	1,82	2,01	2,21	2,55	2,7	2,84	
cooling capacity	[Btu/h]	2294	2837	3446	4111	5565	6332	7110	
power consumption	[W]	414	457	501	546	640	687	733	
current consumption	[A]	2,7	2,9	3	3,2	3,5	3,7	3,9	

ambient temperature	[°C / °F]	32 / 90							(suction gas temperature [°C / °F]: 20 / 68, subcooling: 0K)
evaporating temperature	[°C / °F]	-25 / -13	-20 / -4	-15 / 5	-10 / 14	0 / 32	5 / 41	10 / 50	
cooling capacity	[W]	610	758	922	1100	1486	1688	1893	
COP	[W/W]	1,42	1,59	1,75	1,9	2,16	2,27	2,37	
cooling capacity	[Btu/h]	2084	2588	3149	3757	5075	5765	6463	
power consumption	[W]	431	478	528	580	688	743	798	
current consumption	[A]	2,8	3	3,1	3,3	3,7	3,9	4,2	

ambient temperature	[°C / °F]	38 / 100							(suction gas temperature [°C / °F]: 20 / 68, subcooling: 0K)
evaporating temperature	[°C / °F]	-25 / -13	-20 / -4	-15 / 5	-10 / 14	0 / 32	5 / 41	10 / 50	
cooling capacity	[W]	557	695	846	1010	1361	1543	1727	
COP	[W/W]	1,26	1,4	1,54	1,66	1,87	1,96	2,03	
cooling capacity	[Btu/h]	1904	2372	2890	3449	4648	5270	5897	
power consumption	[W]	443	495	549	607	727	788	850	
current consumption	[A]	2,8	3	3,2	3,4	3,8	4,1	4,5	

ambient temperature	[°C / °F]	43 / 109							(suction gas temperature [°C / °F]: 20 / 68, subcooling: 0K)
evaporating temperature	[°C / °F]	-25 / -13	-20 / -4	-15 / 5	-10 / 14	0 / 32	5 / 41		
cooling capacity	[W]	512	640	781	932	1254	1420		
COP	[W/W]	1,14	1,27	1,38	1,49	1,66	1,73		
cooling capacity	[Btu/h]	1749	2187	2668	3184	4284	4849		
power consumption	[W]	450	505	564	626	756	823		
current consumption	[A]	2,8	3	3,2	3,4	4	4,4		