

## Model

Designation

**CU SCE18CNLX R290 230/1/50 CA**



Sales code:

314H4001

Engineering code:

CUSCE18CNLXCE

## Application Data

Power supply	220-240V / 50Hz 1~
Refrigerants	R290
Refr. charge - tech. limit	550g / 19,4oz
Starter	HST / capillary tube or expansion valve
Sound pressure (10m)	33,3dB(A)

## Generic data

Voltage range	198 - 254V / 50Hz
Refrigerant	R290
Application	LBP
Rated performance	<u>pe=-25°C, Tsuc=20°C, Tamb=25°C, subcooling: 2K</u>
Cooling capacity	740W / 2526Btu/h
Power consumption	486,8W
Current consumption	3A
COP/EER	1,52 / 5,19Btu/Wh
Approvals	Eco design (EU) 2015/1095, CE, UK CA, VDE

## Compressor

Designation	<b>SCE18CNLX</b>
Motor configuration	CSIR
Locked rotor amperage	17,47A
Rated load amperage	2,92A
Winding resistance main	4,07Ω
Winding resistance aux	15,88Ω
Oil quantity	550cm <sup>3</sup> / 18,6fl.oz
Oil type	POE
Horsepower rating	3/4 HP

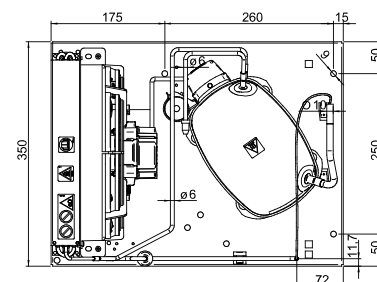
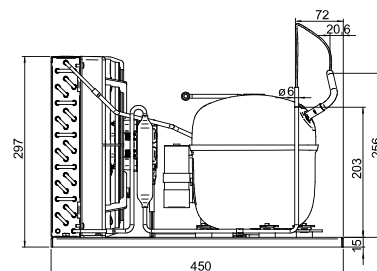
## Dimensions

### Condensing unit

Height x Width x Depth	297 x 350 x 450 [mm] / 11,7 x 13,8 x 17,7 [in]
Weight	21,8kg / 48,1lbs
Suction adapter	OD ø10mm / 2/5in
Discharge adapter	OD ø6mm / 1/4in
Process connector	ø6,2mm / 0,24in

### Package data

Height x Width x Depth	340 x 372 x 570 [mm] / 13,4 x 14,6 x 22,4 [in]
Weight	24,8kg / 54,7lbs



## Model

Designation **CU SCE18CNLX R290 230/1/50 CAP**

Sales code: 314H4001

Engineering code: CUSCE18CNLXCE

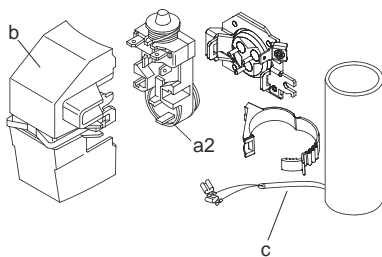
## Components Condensing-Unit / Spare Parts

Component	Type	Spare part code number
Compressor code	SCE18CNLX	104H8848
Condenser	Condenser (3 rows x 11 tubes)	1130270FI0
Fan motor		62010155
Blade code	ø254mm 28°	A254-28
Air flow	674,9m³/h	
Receiver code	not installed	-/-
Suction valve code	OD ø10mm / 2/5in	-/-
Liquid valve code	OD ø6mm / 1/4in	-/-

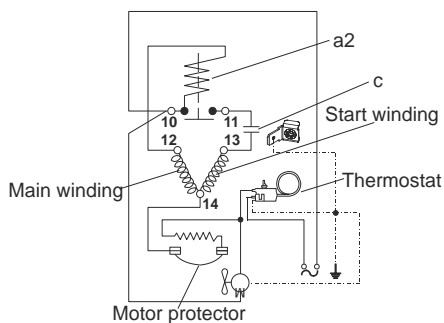
Compressor starting equipment	Spare part code number
pos. a2 - assy. relay + ext. protecto	117U7405
pos. c - start capacitor (80µF)	117U5017
pos. d - cord relief	103N1004
pos. b - plastic cover + clamp	117U1033

## Wiring Sketch Compressor

CSIR



8883



## Model

Designation **CU SCE18CNLX R290 230/1/50 CAP**

Sales code: 314H4001

Engineering code: CUSCE18CNLXCE

## Cooling performance - Conf. 1

Power supply	220-240V / 50Hz 1~	Voltage range	198 - 254V / 50Hz
Refr. charge - tech. limit	550g / 19,4oz		
Starter	HST / capillary tube or expansion valve		
Motor configuration	CSIR		
Refrigerant	R290		
Application	LBP		
Approvals	Eco design (EU) 2015/1095, CE, UK CA, VDE		

ambient temperature	[°C / °F]	25 / 77 (suction gas temperature [°C / °F]: 20 / 68, subcooling: 2K)						
evaporating temperature	[°C / °F]	-40 / -40	-35 / -31	-30 / -22	-25 / -13	-20 / -4	-10 / 14	-5 / 23
cooling capacity	[W]	396	483	599	740	901	1267	1460
COP	[W/W]	1,25	1,3	1,4	1,52	1,65	1,87	1,95
cooling capacity	[Btu/h]	1352	1650	2045	2526	3078	4328	4988
power consumption	[W]	316	371	428	487	547	676	747
current consumption	[A]	2,5	2,6	2,8	3	3,1	3,6	3,8

ambient temperature	[°C / °F]	32 / 90 (suction gas temperature [°C / °F]: 20 / 68, subcooling: 2K)						
evaporating temperature	[°C / °F]	-40 / -40	-35 / -31	-30 / -22	-25 / -13	-20 / -4	-10 / 14	-5 / 23
cooling capacity	[W]	345	430	540	671	820	1148	1317
COP	[W/W]	1,08	1,14	1,23	1,34	1,45	1,61	1,66
cooling capacity	[Btu/h]	1179	1470	1845	2293	2800	3919	4498
power consumption	[W]	319	377	438	501	567	714	795
current consumption	[A]	2,5	2,7	2,8	3	3,2	3,7	4,1

ambient temperature	[°C / °F]	38 / 100 (suction gas temperature [°C / °F]: 20 / 68, subcooling: 2K)						
evaporating temperature	[°C / °F]	-40 / -40	-35 / -31	-30 / -22	-25 / -13	-20 / -4	-10 / 14	-5 / 23
cooling capacity	[W]	303	385	489	611	746	1038	1186
COP	[W/W]	0,96	1,02	1,11	1,2	1,28	1,39	1,41
cooling capacity	[Btu/h]	1036	1317	1670	2086	2547	3546	4050
power consumption	[W]	315	377	442	511	584	748	841
current consumption	[A]	2,5	2,6	2,8	3	3,2	3,9	4,4

ambient temperature	[°C / °F]	43 / 109 (suction gas temperature [°C / °F]: 20 / 68, subcooling: 2K)						
evaporating temperature	[°C / °F]	-40 / -40	-35 / -31	-30 / -22	-25 / -13	-20 / -4	-10 / 14	
cooling capacity	[W]	267	346	443	556	679	940	
COP	[W/W]	0,86	0,92	1	1,07	1,13	1,2	
cooling capacity	[Btu/h]	913	1182	1514	1898	2319	3212	
power consumption	[W]	310	375	445	520	600	781	
current consumption	[A]	2,4	2,6	2,8	3	3,3	4,2	