

## Model

Designation	<b>CU SCE18MNX R290 230/1/50 CAP</b>	Sales code:	314H4004
		Engineering code:	CUSCE18MNX0CE



## Application Data

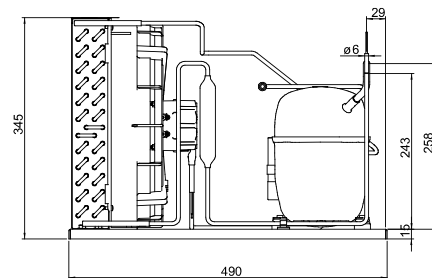
Power supply	220-240V / 50Hz 1~
Refrigerants	R290
Refr. charge - tech. limit	550g / 19,4oz
Starter	HST / capillary tube or expansion valve
Sound pressure (10m)	35,8dB(A)

## Generic data

Voltage range	198 - 254V / 50Hz
Refrigerant	R290
Application	MBP
Rated performance	<u>pe=-10°C, Tsuc=20°C, Tamb=25°C, subcooling: 2K</u>
Cooling capacity	1461W / 4990Btu/h
Power consumption	646,2W
Current consumption	4,1A
COP/EER	2,26 / 7,72Btu/Wh
Approvals	Eco design (EU) 2015/1095, CE, UK CA, VDE

## Compressor

Designation	<b>SCE18MNX</b>
Motor configuration	CSIR
Locked rotor amperage	21,07A
Rated load amperage	3,75A
Winding resistance main	3,44Ω
Winding resistance aux	9,4Ω
Oil quantity	550cm <sup>3</sup> / 18,6fl.oz
Oil type	POE
Horsepower rating	3/4 HP



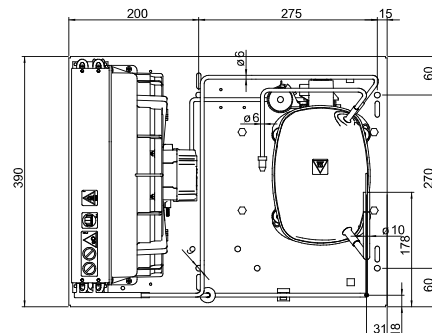
## Dimensions

### Condensing unit

Height x Width x Depth	345 x 390 x 490 [mm] / 13,6 x 15,4 x 19,3 [in]
Weight	21,5kg / 47,3lbs
Suction adapter	OD ø10mm / 2/5in
Discharge adapter	OD ø6mm / 1/4in
Process connector	ø6,2mm / 0,24in

### Package data

Height x Width x Depth	380 x 450 x 540 [mm] / 15 x 17,7 x 21,3 [in]
Weight	25,5kg / 56,1lbs



## Model

Designation **CU SCE18MNX R290 230/1/50 CAP**

Sales code: 314H4004  
Engineering code: CUSCE18MNX0CE

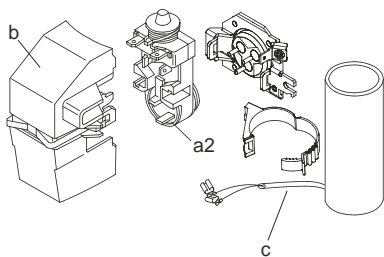
## Components Condensing-Unit / Spare Parts

Component	Type	Spare part code number
Compressor code	SCE18MNX	104H8849
Condenser	Condenser (4 rows x 13 tubes)	1340315FI0
Fan motor		62010155
Blade code	ø300mm 22°	A300-22
Air flow	985,5m³/h	
Receiver code	not installed	-/-
Suction valve code	OD ø10mm / 2/5in	-/-
Liquid valve code	OD ø6mm / 1/4in	-/-

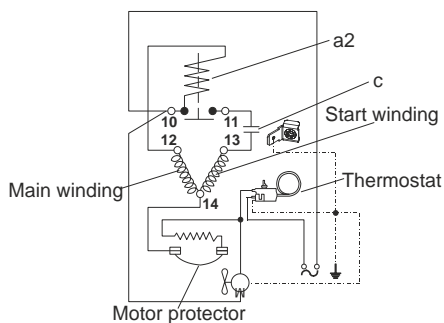
Compressor starting equipment	Spare part code number
pos. a2 - assy. relay + ext. protecto	117U7406
pos. c - start capacitor (80µF)	117U5017
pos. d - cord relief	103N1004
pos. b - plastic cover + clamp	117U1033

## Wiring Sketch Compressor

CSIR



8883



## Model

Designation **CU SCE18MNX R290 230/1/50 CAP**

Sales code: 314H4004

Engineering code: CUSCE18MNX0CE

## Cooling performance - Conf. 1

Power supply	220-240V / 50Hz 1~	Voltage range	198 - 254V / 50Hz					
Refr. charge - tech. limit	550g / 19,4oz							
Starter	HST / capillary tube or expansion valve							
Motor configuration	CSIR							
Refrigerant	R290							
Application	MBP							
Approvals	Eco design (EU) 2015/1095, CE, UK CA, VDE							

ambient temperature	[°C / °F]	25 / 77 (suction gas temperature [°C / °F]: 20 / 68, subcooling: 2K)						
evaporating temperature	[°C / °F]	-25 / -13	-20 / -4	-15 / 5	-10 / 14	0 / 32	5 / 41	10 / 50
cooling capacity	[W]	830	1013	1224	1461	1994	2283	2581
COP	[W/W]	1,65	1,86	2,06	2,26	2,66	2,87	3,1
cooling capacity	[Btu/h]	2835	3459	4181	4990	6811	7797	8816
power consumption	[W]	504	546	594	646	750	796	833
current consumption	[A]	3,7	3,8	3,9	4,1	4,4	4,6	4,7

ambient temperature	[°C / °F]	32 / 90 (suction gas temperature [°C / °F]: 20 / 68, subcooling: 2K)						
evaporating temperature	[°C / °F]	-25 / -13	-20 / -4	-15 / 5	-10 / 14	0 / 32	5 / 41	10 / 50
cooling capacity	[W]	754	922	1117	1334	1821	2083	2354
COP	[W/W]	1,44	1,61	1,77	1,93	2,25	2,41	2,58
cooling capacity	[Btu/h]	2574	3149	3814	4555	6218	7115	8041
power consumption	[W]	525	574	630	690	811	865	911
current consumption	[A]	3,8	3,9	4	4,2	4,6	4,8	5

ambient temperature	[°C / °F]	38 / 100 (suction gas temperature [°C / °F]: 20 / 68, subcooling: 2K)						
evaporating temperature	[°C / °F]	-25 / -13	-20 / -4	-15 / 5	-10 / 14	0 / 32	5 / 41	10 / 50
cooling capacity	[W]	690	848	1029	1230	1679	1920	2167
COP	[W/W]	1,28	1,43	1,57	1,7	1,96	2,09	2,22
cooling capacity	[Btu/h]	2357	2896	3516	4202	5734	6556	7400
power consumption	[W]	540	595	657	723	858	920	974
current consumption	[A]	3,8	3,9	4,1	4,3	4,8	5	5,2

ambient temperature	[°C / °F]	43 / 109 (suction gas temperature [°C / °F]: 20 / 68, subcooling: 2K)						
evaporating temperature	[°C / °F]	-25 / -13	-20 / -4	-15 / 5	-10 / 14	0 / 32	5 / 41	10 / 50
cooling capacity	[W]	635	785	956	1145	1563	1786	2014
COP	[W/W]	1,15	1,29	1,41	1,53	1,75	1,85	1,97
cooling capacity	[Btu/h]	2169	2682	3267	3911	5339	6098	6877
power consumption	[W]	550	610	677	749	895	963	1023
current consumption	[A]	3,8	4	4,2	4,4	4,9	5,2	5,4